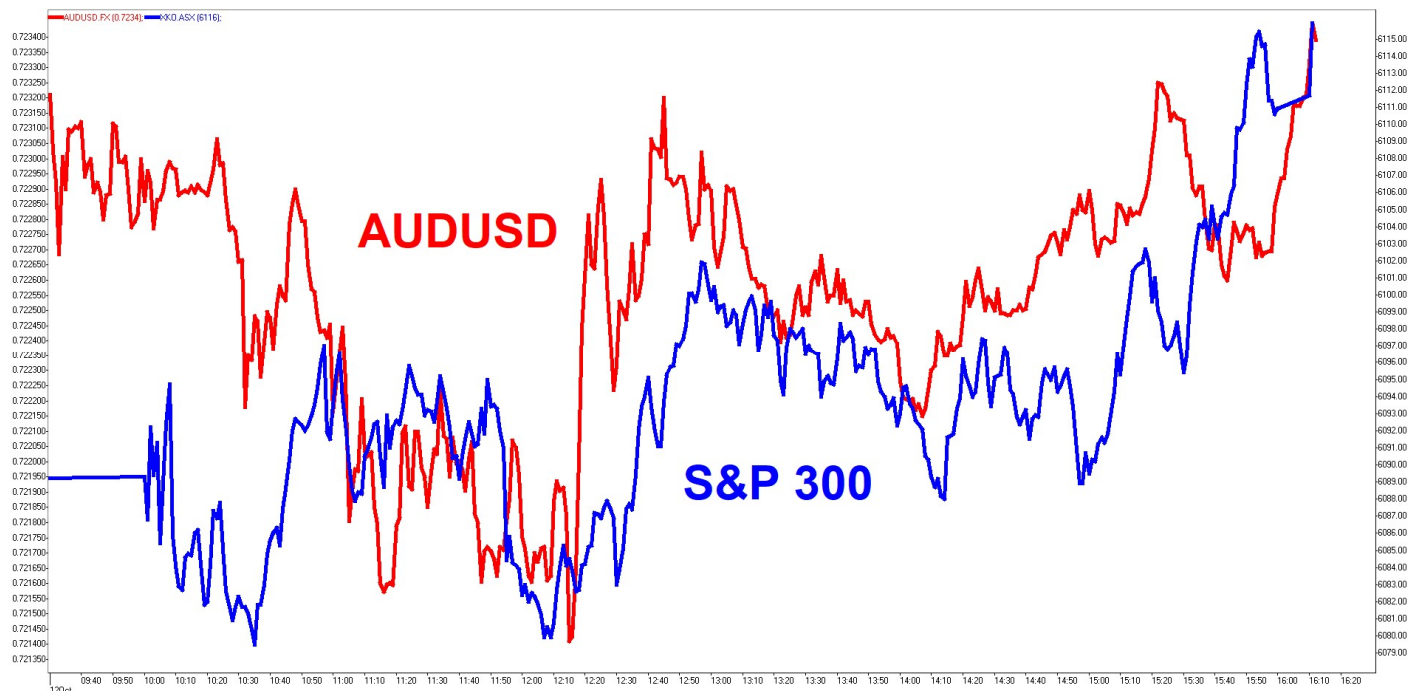


# SUNSET STRIP

# DEEP DATA ANALYTICS

INVESTMENT MOTTO: "Life is all about cycles. You evolve with the cycles or they run over you."

## MARKET SNAPSHOT AND INTRADAY CHART



Security	Last	+/-	%	Security	Last	+/-	%	Security	Last	+/-	%
S&P 300	6116.00	29.10	0.48	DXY	93.0800	0.0400	0.04	SPTGLD	1928.98	-0.42	-0.02
S&P 200	6131.90	29.70	0.49	AUDUSD	0.7233	-0.0007	-0.09	TWI	60.80	0.10	0.16
All Ords	6343.00	30.50	0.48	NZDAUD	0.9217	0.0002	0.02	WTIS	40.19	-0.41	-1.01
Small Ords	2888.80	11.30	0.39	GBPAUD	1.8033	0.0010	0.06	BRENT	42.41	-0.44	-1.03
Micro Cap	1779.20	35.80	2.05	EURAUD	1.6340	0.0004	0.02	COPP3M	6741.00	118.50	1.79
NZ50G	12356.89	76.35	0.62	EURUSD	1.1819	-0.0013	-0.11	NICK3M	15028.00	300.00	2.04
JAPAN	23555.27	-64.42	-0.27	USDJPY	105.5030	-0.1020	-0.10	ZINC	2415.50	59.50	2.53
KOSPI	2402.37	10.41	0.44	CNYUSD	0.1488	-0.0006	-0.39	<b>Security</b>	<b>Last</b>	<b>+/-</b>	<b>%</b>
SING	2547.15	14.19	0.56	<b>Security</b>	<b>Last</b>	<b>+/-</b>	<b>%</b>	DOWFUT	28543.00	25.00	0.09
SHANGHAI	3346.26	74.19	2.27	USBON	0.7753	0.0000	0.00	NASFUT	11789.75	65.00	0.55
HNGKNG	24608.71	489.58	2.03	USLBR	1.5749	0.0000	0.00	SPFUT	3484.75	11.50	0.33
GERMAN	13051.23	9.02	0.07	BOND10	0.8414	0.0394	4.91				
CAC40	4946.81	34.87	0.71	BBSR3M	0.0800	-0.0026	-3.15				
FTSE	6016.65	38.62	0.65	VIX	25.00	-1.36	-5.16				
DOWJON	28586.90	161.39	0.57	XVI	21.41	-0.59	-2.66				
NASDAQ	11579.94	158.96	1.39								
SP500	3477.13	30.30	0.88								

Sources: AFR, AAP, ASX, Bloomberg, CNBC, CNN, FactSet, Hedgeye, IRESS, Market Watch, Thomson Reuters, S&P, SMH, Trading Economics

## MARKET COMMENTARY:

1. Local market was aimless most of the day despite the optimism in Chinese markets before getting jammed up in the last hour by global investors chasing a stronger AUDUSD. Aussie fund managers were still in holiday mode as turnover was weak. Chinese markets are up near 2.5% due to reform policies expected to drive a post pandemic economy. China remains the main country/region showing stable recovery path and the Yuan is flying on the back of that. The Yuan peg to USD keeps rising and the Chinese are allowing that to play out. They are preparing for the next USD decline cycle. USD global currency standard is gradually being weakened by Yuan in different parts of the world. It may not happen tomorrow, but the cracks have started to appear and the lack of reform will keep the move away from USD. US 30 year bond yield has broken above 200 day MA for the first time in years as cost inflation starts to pick up. Economic recovery fading with markets as White House remains the underdog in the election cycle. Elevated risk of geopolitics taking centre stage in the next month as Chinese economy holds recovery cycle and US doesn't!!!

The positive drive in the last hour for local markets were in Tech and Banks while Energy and Utilities were the big negative sectors. Fintechs were in M&A play with Bravura acquiring and Link getting a bid.

Index	Last	+/-	%	Index	Last	+/-	%
S&P/ASX 20	3308.3	19.8	0.6	S&P/ASX 300	6116.0	29.1	0.48
S&P/ASX 50	5863.9	24	0.41	All Ordinaries(500)	6343.0	30.5	0.48
S&P/ASX All Aust 50	5823.2	24.6	0.42	S&P/ASX MidCap 50	7685.0	66.7	0.88
S&P/ASX 100	5045.7	24.6	0.49	S&P/ASX Small Ordinaries	2888.8	11.3	0.39
S&P/ASX 200	6131.9	29.7	0.49	SFE Futures 200	6096.0	0	0
S&P/ASX All Aust 200	6086.8	29.4	0.49				
S&P/ASX 200 Energy	6674.7	-49	-0.73	S&P/ASX 200 Financials	4833.1	56.2	1.18
S&P/ASX 200 Materials	14207.5	-10.5	-0.07	S&P/ASX 200 Info Tech	1959.0	57.6	3.03
S&P/ASX 200 Industrials	5886.9	-15.9	-0.27	S&P/ASX 200 Telecom Serv.	1169.0	3.2	0.27
S&P/ASX 200 Cons. Discr	2767.3	10.1	0.37	S&P/ASX 200 Utilities	6987.6	-44.1	-0.63
S&P/ASX 200 Cons. Staple	12403.5	73.7	0.6	S&P/ASX 200 Prop. Trusts	1344.9	-1	-0.07
S&P/ASX 200 Health Care	43684.2	198.2	0.46	S&P/ASX 200 Fin.-x-Prop Trusts	5390.6	62.8	1.18

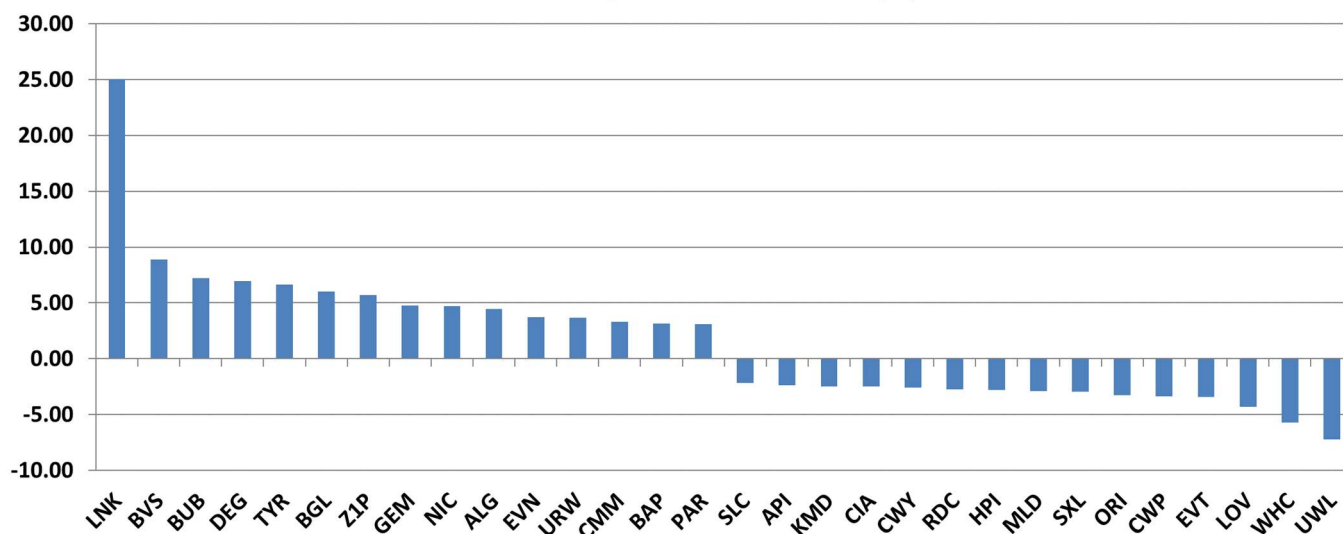
Globally pandemic first, second or third wave is hitting all parts...even China. Emerging Markets are a hotbed of the pandemic and that is unlikely to change in 2021. Even a vaccine in the next 3 months will not reach them for a year.

US market moved higher on Friday with weak economic data, clarity on election result and stimulus hope to deliver the best week in 2 months. DOW ran up 300 by lunch and faded to close up 160. UK growth was weaker than expected and that set the weak economic outlook for EU region in second wave. US job data also confirmed recovery fading. Trump pushed up stimulus deal worth \$1.8T and then wanted one above Democrat deal of \$2.2T... not sure what is real anymore. The election odds are moving towards Democrats and markets are pricing in low risk of uncertainty. Democrats holding most swing states, debates seem to be off and Ted Cruz warns of election bloodbath like post watergate. Bonds and US\$ were lower and commodities higher ... except oil struggling with demand worries. Gold ripping higher again and market realizing money printing is inevitable. Gold was the best sector by a margin while tech and retail were next best...energy and property were the worst. Expect some left field move by Whitehouse as the election moves away from them. Chinese are ramping Yuan higher against US\$ as they expect devaluation move...they are usually right!!!

Remain nimble, contrarian and cautiously pragmatic with elevated global macro risks!!! Buckle up...it's going to get bumpy...new month/quarter has started!!!

## 2. Movers and Shakers in S&P 300 >

S&P 300 Best/Worst 15 Performers (%)



## 3. Market sentiment from CNN >



4. **Australian Finance Group (AFG +0.87%)** > Australian Finance Group Ltd's (ASX: AFG) wholly-owned subsidiary AFG Securities Pty Ltd ("AFG Securities") has successfully priced its inaugural non-conforming Residential Mortgage Backed Securities ("RMBS") transaction. The AFG 2020-1NC Trust \$500 million issue is AFG Securities tenth issue since 2013, taking the total paper issued to the market by AFG Securities to \$4.075 billion. This being the first issue under its non-conforming program, the portfolio includes low-documentation and non-conforming loans originated by AFG Securities. **ASX**
5. **Austal Limited (ASB +1.74%)** > Austal Limited (ASX:ASB) is pleased to announce that the future USS Mobile (LCS 26) has successfully completed acceptance trials in the Gulf of Mexico. LCS 26 is the 13th Independence-class Littoral Combat Ship (LCS) built by Austal USA in Mobile, Alabama, for the United States Navy (USN). Austal Chief Executive Officer David Singleton said Mobile (LCS26) was the third naval ship to successfully complete acceptance trials at Austal USA in 2020. **ASX**
6. **Bapcor (BAP +3.15%)** > On 19th August 2020 when advising of Bapcor's FY20 full year results, a trading update for July 2020 was provided showing a strong start to the new financial year. During the first quarter of FY21 Government imposed restrictions in Victoria and Auckland have had a negative impact on trading operations in those jurisdictions. However despite these impacts Bapcor's businesses have continued to perform extremely well delivering the following for the three months to the end of September 2020 compared to the three months to September 2019. **ASX**
7. **Bravura Solutions (BVS +8.88%)** > Bravura Solutions Limited (ASX:BVS) (Bravura) has today announced the acquisition of Delta for a total consideration of up to GBP23.0m (A\$41.5m1). Delta is a UK software company that provides technology to power complex pensions administration in the UK market. Delta's highly regarded products support the administration of SPPs (self-invested personal pensions) and SSAs (Small Self-Administered Schemes), including the full range of complex client drawdown options available under the pension freedoms legislation. Delta's technology currently supports the needs of more than 30 UK clients. **ASX**
8. **Commonwealth Bank (CBA +1.33%)** > Latest figures for September show an encouraging trend in the number of our home loan and SME lending customers who are able to return to making repayments on their loans. As a result, the total number of loan repayment deferrals now sits at 129,000, down from 174,000 in August and 210,000 in June. Total loan balances on these deferrals now stand at \$42bn, down from \$59bn in August and \$67bn in June. Further significant reductions are expected as initial temporary repayment deferrals continue to expire through October. **ASX**
9. **CSR Limited (CSR +1.08%)** > CSR Limited (CSR) today announced the sale of 8.6 hectares of the third tranche of land at Horsley Park, NSW for total proceeds of \$84.3 million. This sale is expected to generate Property EBIT of approximately \$48 million and anticipated to be recorded in the financial year ending 31 March 2024 (YEM24). **ASX**
10. **Crown Resorts (CWN -2.00%)** > Crown Resorts Limited (ASX: CWN) (Crown) confirms that Crown Melbourne Limited (Crown Melbourne) has received a Show Cause Notice from the Victorian Commission for Gambling and Liquor Regulation (VCGLR) relating to Crown Melbourne's compliance with its Internal Control Statement for junket operations (ICS) as required under the Casino Control Act 1991 (Vic). The Notice requires Crown Melbourne to show cause why disciplinary action should not be taken in relation to an alleged non-compliance with the ICS. **ASX**
11. **Evolution Mining (EVN +3.73%)** > Evolution Mining Limited (ASX:EVN) ("Evolution") is pleased to provide a preliminary summary of its production, costs, and financial performance for the September 2020 quarter. This summary is being released to coincide with the annual Diggers

and Dealers Mining Forum which commences today in Kalgoorlie, Western Australia. Full activities for the September quarter will be released on Tuesday 27 October 2020. All the metrics are tracking ahead of the FY21 plan. These results exclude any contribution from Cracow which was divested on 1 July 2020. **ASX**

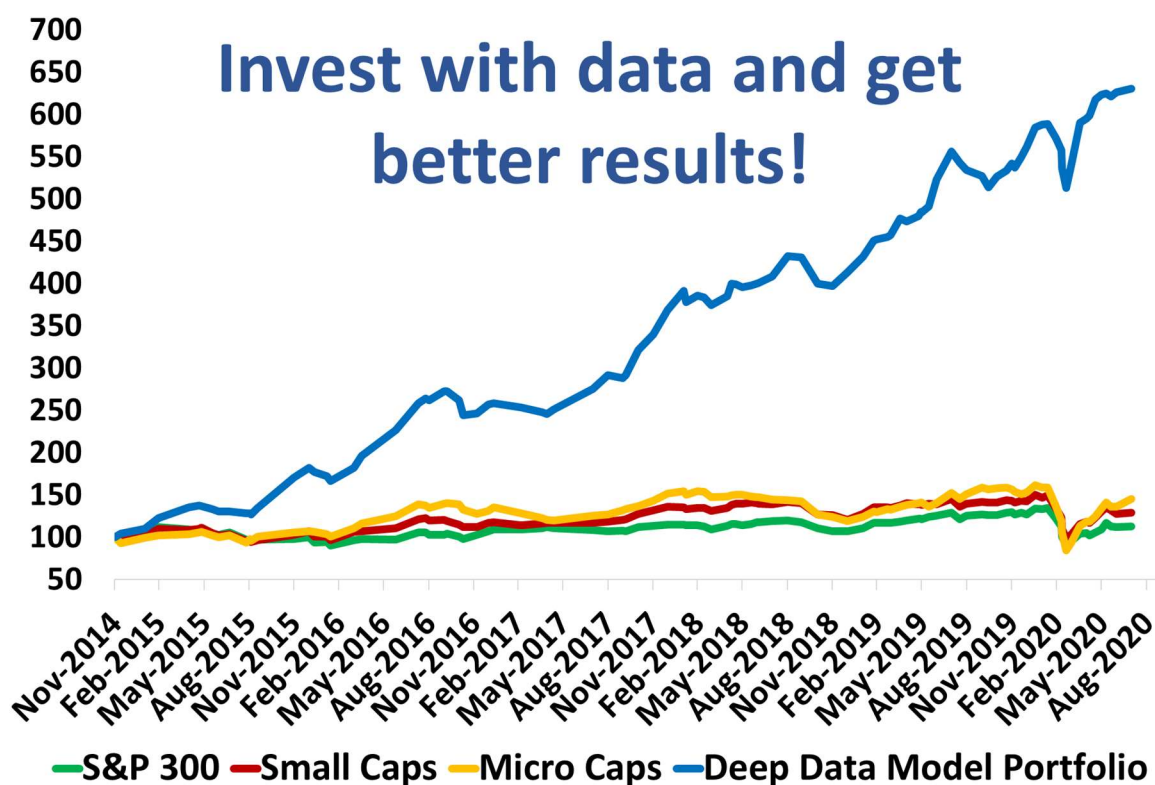
12. **EVENT Hospitality & Entertainment (EVT -3.45%)** > EVENT Hospitality & Entertainment Limited (the "Group") today provided an update regarding the sale of its German cinema exhibition operation ("Cinestar") to Vue International Bidco plc ("Vue") (the "Transaction"). The Group previously announced the sale of Cinestar subject to German Federal Cartel Office ("FCO") approval. Conditional FCO approval for the Transaction was granted on 28 February 2020 subject to the divestment of six sites, of which one has been completed. The sale process for the remaining five divestment sites (the "Divestment Process") is well advanced with a shortlist of three parties, all of which have received in-principle approval from the FCO subject to final review and approval of the transaction documents. Under the Sale and Purchase Agreement for the Transaction, it is Vue's responsibility to do all things necessary to complete the Divestment Process. **ASX**
13. **Link Administration (LNK +25.06%)** > Link Administration Holdings Limited (ASX: LNK) (Link Group) has received a conditional, nonbinding indicative proposal from a consortium comprising Pacific Equity Partners, Carlyle Group and their affiliates (Consortium) to acquire 100% of the shares in Link Group by way of a Scheme of Arrangement (Proposal). The indicative cash price offered to shareholders under the Proposal is \$5.20 per share. The offer price assumes no further dividends, distributions or reductions in capital would be paid from the date of the Proposal. The Proposal also includes a reference to potential scrip alternatives. **ASX**
14. **NEXTDC (NXT +3.05%)** > NEXTDC Limited (ASX: NXT) ("NEXTDC" or "the Company") is pleased to advise that the Company has entered into a new Syndicated Facility Agreement with Credit Suisse AG, Sydney Branch, HSBC, National Australia Bank and Natixis, Singapore Branch, together the Mandated Lead Arrangers, Underwriters and Bookrunners ("MLAUBs") to arrange and underwrite A\$1.5 billion in senior debt facilities ("Senior Debt Facilities"). **ASX**
15. **Orica (ORI -3.24%)** > The final, and most significant, phase of Orica's new single enterprise resource planning (SAP) system ("the system") went live in July 2020, in the midst of the pandemic. The COVID-19 related challenges, where training and support has had to be provided remotely, led to some delays which has resulted in a decision to defer the reporting of the full year result by two weeks. **ASX**
16. **Virtus (VRT +1.83%)** > Media reports distributed over the weekend in Australia stated a national IVF provider has suspended their non-invasive pre-implantation genetic screening, that had been in place since May 2019. Virtus confirms that the non-invasive preimplantation screening technique in question has not been used at any of its clinics, this includes IVF Australia, Melbourne IVF, Queensland Fertility Group or TasIVF. **ASX**



# Deep Data Analytics

Deep Data Analytics is the brainchild of Mathan Somasundaram, a 25-year veteran of the finance and technology sectors. In an increasingly volatile and uncertain economic and political landscape, Mathan saw the need for a dynamic data-driven investment strategy that can be used to optimise the risk-adjusted returns for investors. Seamlessly combining top-down and bottom-up approaches, the vertically integrated, multi-tiered model has been carefully calibrated over the years to rapidly adapt to evolving macro conditions and thereby ensure an effective and dynamic trade-off between risk and return.

Deep Data Analytics has been used as the focal point of strategy in macro marketing documents to Institutional and High Net Worth clients for over a decade. With successive years of consistent and reliable returns despite major disruptive thematic cycles, Deep Data Analytics is widely recognised as one of the leading integrated investment strategies in the market. And now, with the inclusion of a variety of risk/return investment options and insights, breadth of users from institutional to retail investors have access to cutting-edge analytics at their fingertips.



For more information visit... [www.deepdataanalytics.com.au](http://www.deepdataanalytics.com.au)

Or email... [info@deepdataanalytics.com.au](mailto:info@deepdataanalytics.com.au)

# US market overnight - Reuters

U.S. stocks rose on Friday and the S&P 500 and Nasdaq registered their biggest weekly percentage gains since July as optimism over more federal fiscal aid grew.

Talks were expected to continue on a COVID-19 stimulus package, even though U.S. House Speaker Nancy Pelosi and Treasury Secretary Steven Mnuchin failed on Friday to reach agreement.

Mnuchin floated a new proposal Friday afternoon, but an aide for Pelosi said it lacked a broad plan to contain the pandemic.

Recent trading on Wall Street has been dictated by headlines on fiscal aid, with the three main indexes tumbling on Tuesday after U.S. President Donald Trump called off negotiations. He has since indicated he was willing to resume discussions.

"The market's reacting well to Trump's sudden turnaround in terms of a support package," said Tim Ghriskey, chief investment strategist at Inverness Counsel in New York, New York. "A lot of this has been politics, but a lot of people believe the economy really needs some economic support here, so that's a good thing."

The S&P 500 technology shares .SPLRCT rose 1.5%, and the sector gave the S&P 500 its biggest boost. The small-cap Russell 2000 index .RUT climbed 6.4% for the week, posting its biggest percentage gain since early June.

The Dow Jones Industrial Average .DJI rose 161.39 points, or 0.57%, to 28,586.9, the S&P 500 .SPX gained 30.31 points, or 0.88%, to 3,477.14 and the Nasdaq Composite .IXIC added 158.96 points, or 1.39%, to 11,579.94.

For the week, the S&P 500 rose 3.8% and the Nasdaq climbed 4.6%, their biggest weekly percentage gains since July. The Dow added 3.3%, its biggest weekly gain since August.

Strategists say investors have also begun to digest the possibility of Democratic candidate Joe Biden winning the Nov. 3 presidential election after a fractious debate last month led to a jump in his lead over Trump in several national polls.

Xilinx Inc XLNX.O surged 14.1% after a report said Advanced Micro Devices Inc AMD.O was in talks to buy the chipmaker in a deal valued at more than \$30 billion. General Electric Co GE.N rose 2.9% as a report said Goldman Sachs reinstated coverage on the U.S. industrial conglomerate with a "buy" rating, saying the company will emerge stronger from the COVID-19 pandemic.

The S&P 500 energy index .SPNY fell 1.6% following recent gains. Advancing issues outnumbered declining ones on the NYSE by a 1.30-to-1 ratio; on Nasdaq, a 1.42-to-1 ratio favored advancers.

The S&P 500 posted 76 new 52-week highs and one new low; the Nasdaq Composite recorded 141 new highs and 18 new lows.

Volume on U.S. exchanges was 8.92 billion shares, compared with the 9.76 billion average for the full session over the last 20 trading days.

# US Movers and Shakers - CNBC

## MARKET MOVERS

[S&P](#)[NASDAQ](#)[DOW](#)[EUR](#)[ASIA](#)[COVID19](#)

### TOP

XLNX	Xilinx Inc	14.105%	<div></div>
EBAY	eBay Inc	6.471%	<div></div>
ETSY	ETSY Inc	5.11%	<div></div>
TER	Teradyne Inc	4.389%	<div></div>
FTNT	Fortinet Inc	3.732%	<div></div>

### BOTTOM

NLSN	Nielsen Holding...	4.778%	<div></div>
APA	Apache Corp	4.635%	<div></div>
MHK	Mohawk Industr...	4.376%	<div></div>
AMD	Advanced Micr...	3.942%	<div></div>
SPG	Simon Property...	3.354%	<div></div>

## MARKET MOVERS

[S&P](#)[NASDAQ](#)[DOW](#)[EUR](#)[ASIA](#)[COVID19](#)

### TOP

XLNX	Xilinx Inc	14.105%	<div></div>
EBAY	eBay Inc	6.471%	<div></div>
LBTYA	Liberty Global P...	6.106%	<div></div>
LBTYK	Liberty Global P...	5.825%	<div></div>
NXPI	NXP Semicond...	4.969%	<div></div>

### BOTTOM

AMD	Advanced Micr...	3.942%	<div></div>
WYNN	Wynn Resorts Ltd	2.22%	<div></div>
SIRI	Sirius XM Holdi...	2.013%	<div></div>
WBA	Walgreens Boot...	1.969%	<div></div>
TCOM	Trip.com Group ...	1.741%	<div></div>

## MARKET MOVERS

[S&P](#)[NASDAQ](#)[DOW](#)[EUR](#)[ASIA](#)[COVID19](#)

### TOP

MSFT	Microsoft Corp	2.484%	<div></div>
CRM	Salesforce.Com...	2.214%	<div></div>
V	Visa Inc	1.803%	<div></div>
AAPL	Apple Inc	1.74%	<div></div>
UNH	UnitedHealth G...	1.684%	<div></div>

### BOTTOM

IBM	International B...	2.814%	<div></div>
WBA	Walgreens Boot...	1.969%	<div></div>
CVX	Chevron Corp	1.622%	<div></div>
AMGN	Amgen Inc	1.412%	<div></div>
INTC	Intel Corp	1.031%	<div></div>

## MARKET MOVERS

[S&P](#)[NASDAQ](#)[DOW](#)[EUR](#)[ASIA](#)[COVID19](#)

### TOP

APLS	Apellis Pharma...	2.921%	<div></div>
ADPT	Adaptive Biotec...	2.639%	<div></div>
RHHBY	Roche Holding ...	2.467%	<div></div>
TMO	Thermo Fisher ...	2.461%	<div></div>
TBIO	Translate Bio Inc	2.432%	<div></div>

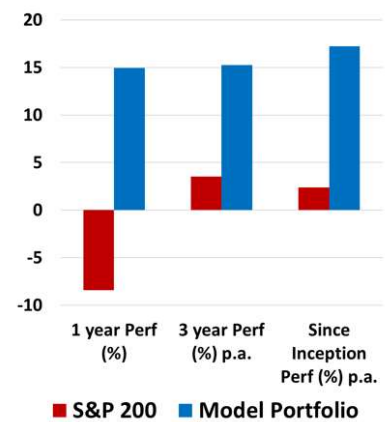
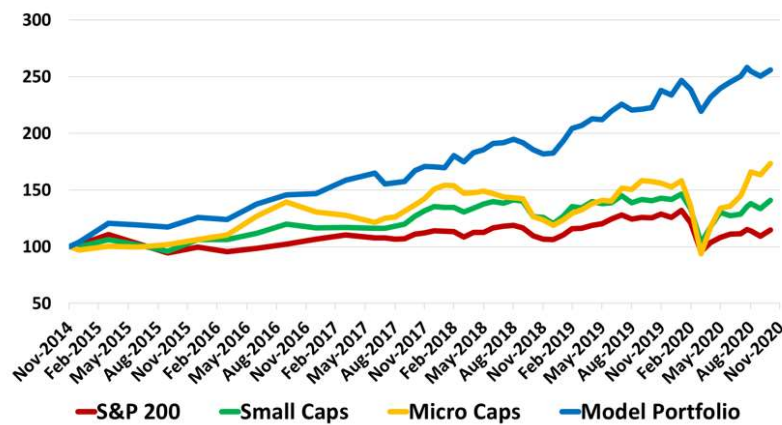
### BOTTOM

CVAC	CureVac NV	2.201%	<div></div>
VIR	Vir Biotechnolo...	1.942%	<div></div>
AMGN	Amgen Inc	1.412%	<div></div>
INO	Inovio Pharmac...	1.362%	<div></div>
EBS	Emergent BioS...	0.815%	<div></div>

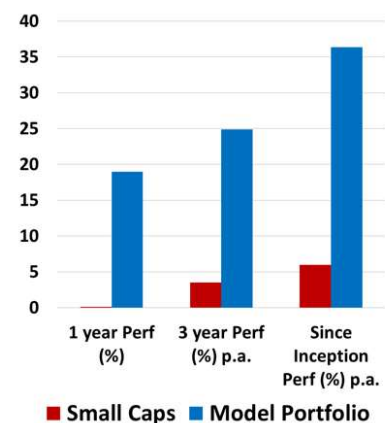
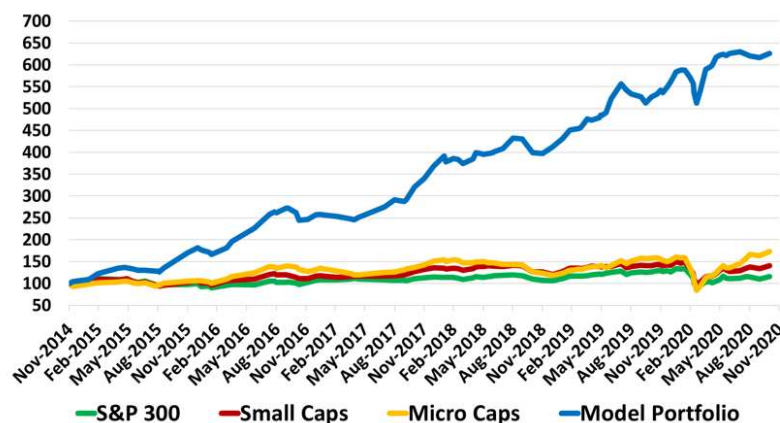


# Deep Data Analytics

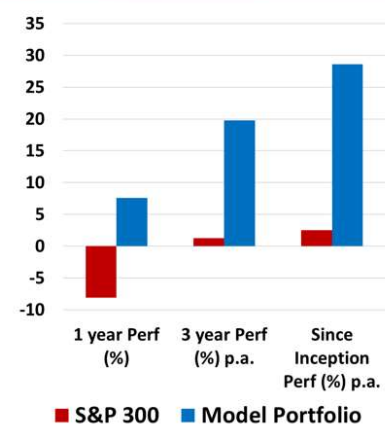
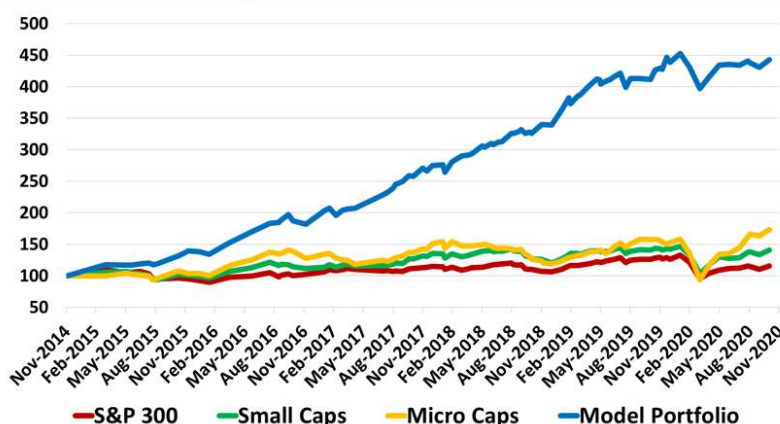
## S&P 100 Best 10 with Cash



## Small Cap Best 10 with Cash



## GARY Best 10 with Cash



For more information visit... [www.deepdataanalytics.com.au](http://www.deepdataanalytics.com.au)

Or email... [info@deepdataanalytics.com.au](mailto:info@deepdataanalytics.com.au)

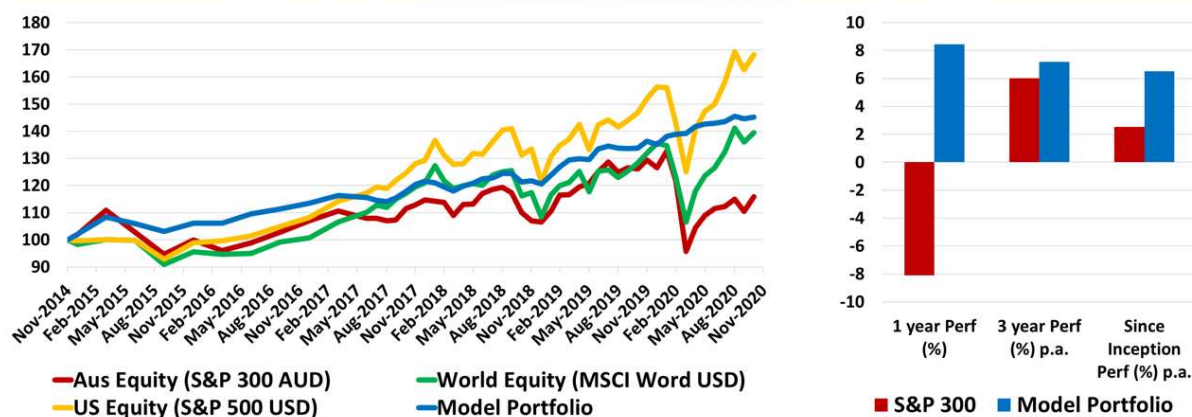
# TODAY'S TOP 30 WINNERS AND LOSERS IN S&P 300

Code	Company Name	Market Cap (\$m)	Price (\$)	Daily Price Change (%)	Consensus Target Price (\$)	Consensus Rating	2020 PE	2021 PE	2020 EPS GROWTH	2021 EPS GROWTH	2020 Div Yield	2021 Div Yield	Newsflash
LNK	Link Admin Hldg	2119.78	4.99	25.06	4.38	HOLD	19.54	22.29	-31.34	-12.31	2.36	2.28	Non-binding indicative proposal to acquire Link Group
BVS	Bravura Solution Ltd	835.42	3.68	8.88	4.80	HOLD	22.67	21.78	9.68	4.11	3.00	3.21	Bravura acquires Delta Financial Systems
BUB	Bubs Aust Ltd	462.10	0.82	7.24	0.86	SELL	-67.92	-407.50	N/A	83.33	0.00	0.00	N/A
DEG	De Grey Mining	1650.35	1.39	6.95	1.06	STRONG BUY	N/A	N/A	N/A	N/A	0.00	0.00	Thick High Grade near surface hits continue at Falcon
TYR	Tyro Payments	1873.67	4.00	6.67	3.50	HOLD	-90.23	-120.30	N/A	24.99	0.00	0.00	COVID-19 Trading Update 30 - Week Ended 9 October 2020
BGL	Bellevue Gold Ltd	974.28	1.23	6.03	1.48	STRONG BUY	-84.83	-153.75	-31.82	44.83	0.00	0.00	N/A
ZIP	Zip Co Ltd.	3902.35	7.99	5.69	8.35	HOLD	-79.40	-74.41	-262.63	-6.71	0.00	0.00	N/A
GEM	G8 Education Limited	874.35	1.10	4.78	1.38	BUY	13.00	20.07	-41.52	-35.22	0.00	3.28	N/A
NIC	Nickel Mines Limited	1585.43	0.78	4.70	1.05	BUY	11.85	6.75	N/A	75.52	1.43	3.91	N/A
ALG	Ardentleisuregrpltd	268.64	0.59	4.46	0.70	BUY	-5.56	-4.29	-406.01	-29.69	0.00	0.00	N/A
EVN	Evolution Mining Ltd	10080.82	6.12	3.73	5.50	HOLD	27.75	20.59	67.27	34.75	2.01	2.50	Preliminary September Quarter Results
URW	Unibailrodawestfield	598.36	2.81	3.69	3.88	HOLD	4.20	4.04	-34.40	4.01	9.30	13.54	N/A
CMM	Capricorn Metals	622.38	1.87	3.31	1.70	HOLD	-86.98	60.32	N/A	244.19	0.00	0.00	N/A
BAP	Bapcor Limited	2582.93	7.85	3.15	7.73	BUY	27.70	26.18	-15.93	5.78	1.46	2.10	Bapcor FY21 1st Quarter Trading Update
PAR	Paradigm Bio.	657.24	3.00	3.09	2.54	HOLD	-39.74	-20.55	-98.68	-93.38	0.00	0.00	N/A
CPU	Computershare Ltd	6998.98	13.34	3.09	14.21	HOLD	17.40	19.19	-24.88	-9.30	3.00	3.16	N/A
NXT	Nextdc Limited	5820.61	13.16	3.05	13.40	BUY	-351.97	-1413.53	-169.38	75.10	0.00	0.00	A\$1.5 Billion Senior Debt
GUD	G.U.D. Holdings	1035.28	12.27	3.02	11.70	HOLD	20.98	19.52	-16.56	7.46	3.80	3.57	N/A
MYS	MyState Limited	338.67	3.79	2.99	4.30	BUY	11.18	10.40	-0.59	7.45	6.58	6.80	N/A
EOS	Electro Optic Sys.	883.13	6.08	2.88	7.14	BUY	34.74	27.14	-9.79	28.00	0.00	0.00	N/A
APX	Appen Limited	4283.51	36.21	2.84	40.00	BUY	59.65	42.12	16.31	41.62	0.31	0.43	N/A
APT	Afterpay Limited	25452.21	92.00	2.78	92.98	BUY	-1061.25	1155.49	-120.64	191.84	0.00	0.00	N/A
WGX	Westgold Resources.	1109.41	2.71	2.65	3.20	STRONG BUY	27.56	10.81	495.94	154.93	0.00	0.25	N/A
IRE	IRESS Limited	1899.59	10.09	2.64	11.62	HOLD	26.07	24.66	-8.98	5.72	4.29	4.47	N/A
ALU	Altium Limited	4854.90	38.04	2.62	36.30	HOLD	82.38	66.00	-23.62	24.83	1.15	1.37	N/A
WAF	West African Res Ltd	1033.80	1.21	2.54	1.30	BUY	10.80	3.34	1593.33	223.81	0.00	0.00	N/A
DCN	Dacian Gold Ltd	222.60	0.41	2.50	0.41	HOLD	-4.27	6.89	-526.22	161.98	0.00	0.00	N/A
NEA	Nearmap Ltd	1186.31	2.53	2.43	3.13	BUY	-31.23	-42.79	-636.36	27.00	0.00	0.00	Appendix 2A
CCL	Coca-Cola Amatil	7240.00	10.23	2.30	9.85	BUY	24.33	20.52	-19.26	18.57	2.54	4.00	Coca-Cola Amatil Investor Session 2 November 2020
RFF	Rural Funds Group	778.22	2.35	2.17	2.43	BUY	15.33	15.91	10.98	-3.59	4.58	4.80	N/A

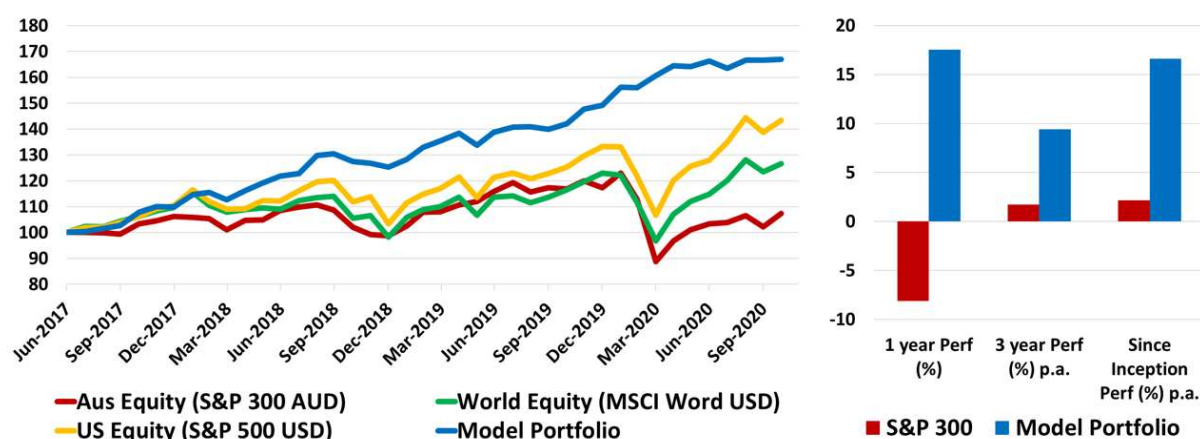
Code	Company Name	Market Cap (\$m)	Price (\$)	Daily Price Change (%)	Consensus Target Price (\$)	Consensus Rating	2020 PE	2021 PE	2020 EPS GROWTH	2021 EPS GROWTH	2020 Div Yield	2021 Div Yield	Newsflash
UWL	Uniti Group Ltd	725.67	1.35	-7.22	1.94	STRONG BUY	27.42	20.61	354.73	33.02	0.00	0.00	N/A
WHC	Whitehaven Coal	1079.11	0.99	-5.74	1.90	BUY	35.78	-22.42	-94.87	-259.57	1.49	0.10	N/A
LOV	Lovisa Holdings Ltd	949.94	8.46	-4.30	7.38	HOLD	20.69	38.96	18.57	-46.90	0.51	1.33	N/A
EVT	Event Hospitality	1542.64	9.24	-3.45	9.35	BUY	54.84	-308.00	-75.79	-117.80	2.27	1.68	Sale of Cinestar - Transaction Update
CWP	Cedar Woods Prop.	475.64	5.71	-3.38	5.80	HOLD	20.69	14.95	-57.11	38.41	3.15	3.59	N/A
ORI	Orica Limited	6757.88	16.11	-3.24	18.50	BUY	19.55	16.92	-13.72	15.53	2.42	3.24	Business Update - FY20 Full Year Results & AGM
SXL	Sthn Cross Media	449.16	0.17	-2.94	0.18	HOLD	7.11	12.31	-67.42	-42.24	7.27	0.00	N/A
MLD	MACA Limited	229.15	0.83	-2.92	1.31	STRONG BUY	7.48	6.34	48.00	18.02	5.72	6.02	N/A
HPI	Hotel Property	506.40	3.12	-2.80	3.15	BUY	15.60	15.60	2.56	0.00	6.41	6.28	N/A
RDC	Redcape Hotel Group	499.74	0.88	-2.76	1.09	STRONG BUY	20.95	11.58	-46.15	80.95	5.34	7.90	N/A
CWY	Cleanaway Waste Ltd	4733.07	2.24	-2.61	2.45	BUY	32.36	28.83	-1.68	12.25	1.71	1.94	Appendix 3Y
CIA	Champion Iron Ltd	1509.32	3.11	-2.51	3.90	BUY	9.63	4.95	-16.87	94.63	0.00	0.00	N/A
KMD	Kathmandu Hold Ltd	864.98	1.19	-2.46	1.25	BUY	19.01	16.18	-49.59	17.44	1.05	3.53	N/A
API	Australian Pharm.	517.29	1.03	-2.38	1.10	SELL	16.07	11.84	-40.79	35.74	0.98	6.60	N/A
SLC	Superloop Limited	340.26	0.91	-2.15	1.23	BUY	-9.72	-13.87	-30.69	29.91	0.13	0.11	N/A
AZJ	Aurizon Holdings Ltd	8252.11	4.22	-2.09	5.40	BUY	15.65	16.18	20.99	-3.25	6.39	6.21	On-Market Buy-back Appendix 3E
BBN	Baby Bunting Grp Ltd	634.00	4.87	-2.01	5.27	BUY	32.91	25.63	30.40	28.38	1.99	2.67	N/A
CWN	Crown Resorts Ltd	6080.88	8.80	-2.00	10.58	BUY	38.48	257.31	-57.89	-85.05	4.03	4.30	VCGLR Show Cause Notice
PBH	Pointsbet Holdings	1996.23	11.30	-1.99	12.65	HOLD	-42.04	-34.04	N/A	-23.50	0.00	0.00	N/A
SM1	Synlait Milk Ltd	934.19	5.11	-1.92	5.98	HOLD	12.32	12.66	-13.30	-2.65	0.00	0.00	N/A
RWC	Reliance Worldwide	3413.21	4.24	-1.85	4.33	HOLD	26.68	21.42	-17.70	24.55	1.84	2.21	N/A
SHV	Select Harvests	635.87	6.46	-1.82	7.43	BUY	25.59	20.73	-49.17	23.46	2.19	2.88	Appendix 2A
BWX	BWX Limited	627.95	4.42	-1.78	5.02	BUY	36.91	33.17	30.87	11.27	0.92	1.12	Notice of Annual General Meeting
AX1	Accent Group Ltd	940.14	1.71	-1.73	1.85	BUY	16.01	15.40	8.31	3.99	3.53	5.29	N/A
CIM	Cimic Group Ltd	7017.38	21.79	-1.71	27.95	BUY	10.59	9.83	-16.47	7.72	3.27	6.39	N/A
TAH	TABCORP Holdings Ltd	7804.33	3.46	-1.70	3.64	HOLD	25.70	23.79	-31.81	8.02	3.44	2.29	N/A
PGH	Pact Group Hldgs Ltd	822.14	2.35	-1.67	2.78	HOLD	12.61	11.45	-16.68	10.07	0.00	3.09	N/A
CCX	City Chic Collective	683.70	2.94	-1.67	3.70	BUY	36.87	32.40	-2.15	13.79	0.00	0.63	N/A
SPL	Starpharma Holdings	610.17	1.49	-1.65	2.03	STRONG BUY	-41.39	-60.82	-9.09	31.94	0.00	0.00	N/A
ORG	Origin Energy	7819.78	4.37	-1.58	6.42	BUY	7.47	18.19	0.31	-58.94	6.43	4.82	ORG to appoint Ilana Atlas and Joan Withers to its Board

# Deep Data Analytics

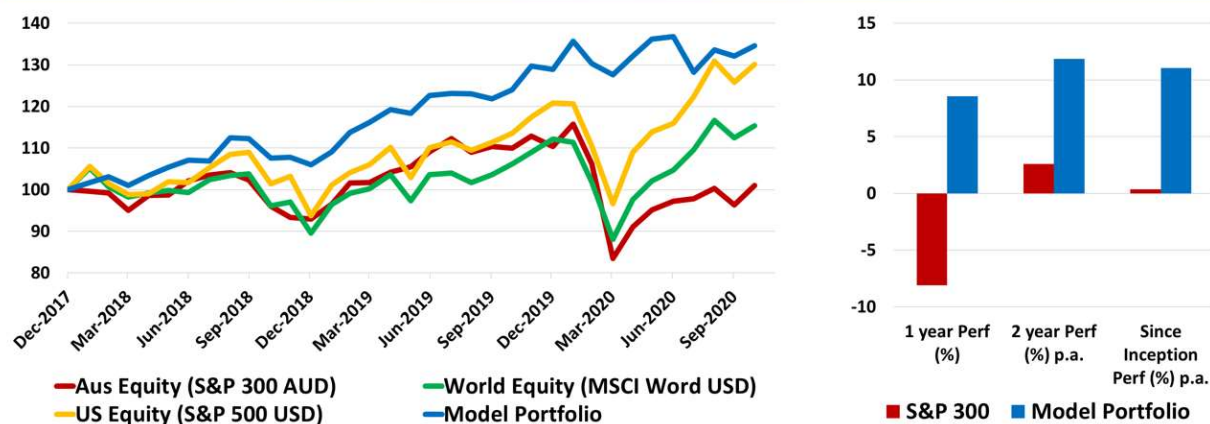
## Multi Asset ETF Model



## Global Tech/Health ETF Model



## ESG ETF Model



For more information visit... [www.deepdataanalytics.com.au](http://www.deepdataanalytics.com.au)

Or email... [info@deepdataanalytics.com.au](mailto:info@deepdataanalytics.com.au)

# CHECKING S&P 300 BY THE SECTOR

## ➤ Energy stocks:

Code	Company Name	Market Cap (\$m)	Price (\$)	Daily Price Change (%)	Consensus Target Price (\$)	Consensus Rating	2020 PE	2021 PE	2020 EPS GROWTH	2021 EPS GROWTH	2020 Div Yield	2021 Div Yield	Newsflash
ALD	Ampol Limited	6127.81	24.60	0.24	28.25	BUY	30.52	16.30	-38.54	87.26	1.79	3.33	N/A
BPT	Beach Energy Limited	3239.49	1.40	-1.41	1.87	BUY	7.20	9.11	-21.78	-21.00	1.38	1.40	CUE: Ironbark-1 Rig Mobilisation
COE	Cooper Energy Ltd	577.46	0.36	0.00	0.50	BUY	-95.69	63.85	-192.75	249.87	0.00	0.00	2020 Annual Report to shareholders
CVN	Camarvon Petroleum	359.81	0.23	0.00	0.37	BUY	-76.67	-54.12	52.61	-41.67	0.00	0.00	Annual Report to shareholders
FAR	FAR Ltd	109.77	0.01	0.00	0.03	BUY	-16.42	-11.00	33.00	-49.25	0.00	0.00	N/A
KAR	Karoon Energy Ltd	487.06	0.88	0.00	1.43	BUY	-6.09	-80.00	-32.62	92.39	0.00	0.00	N/A
NHC	New Hope Corporation	1090.39	1.30	-0.76	1.40	HOLD	8.06	53.06	-63.03	-84.81	6.36	1.21	N/A
ORG	Origin Energy	7819.78	4.37	-1.58	6.42	BUY	7.47	18.19	0.31	-58.94	6.43	4.82	ORG to appoint Ilana Atlas and Joan Withers to its Board
OSH	Oil Search Ltd	6004.99	2.85	-1.38	3.69	BUY	102.52	24.50	-91.28	318.43	0.18	1.14	N/A
SOL	Soul Pattinson (W.H)	6181.19	25.69	-0.50	24.16	BUY	29.76	34.95	-42.83	-14.86	2.19	2.26	N/A
STO	Santos Ltd	10644.47	5.06	-0.98	6.49	BUY	21.78	15.62	-56.33	39.47	1.32	1.63	N/A
SKY	Senex Energy Limited	489.10	0.33	-1.49	0.42	BUY	55.00	24.00	7.91	129.17	0.00	0.00	N/A
VEA	Viva Energy Group	2697.31	1.68	1.20	2.44	BUY	77.96	18.69	-75.36	317.08	3.39	3.54	N/A
WHC	Whitehaven Coal	1079.11	0.99	-5.74	1.90	BUY	35.78	-22.42	-94.87	-259.57	1.49	0.10	N/A
WOR	Worley Limited	5507.85	10.49	-0.57	11.70	BUY	14.02	15.46	25.61	-9.27	3.61	4.17	N/A
WPL	Woodside Petroleum	17685.71	18.35	-0.16	23.55	BUY	25.85	19.38	-59.21	33.41	3.11	4.13	N/A

## ➤ Material (Ex Mining) stocks:

Code	Company Name	Market Cap (\$m)	Price (\$)	Daily Price Change (%)	Consensus Target Price (\$)	Consensus Rating	2020 PE	2021 PE	2020 EPS GROWTH	2021 EPS GROWTH	2020 Div Yield	2021 Div Yield	Newsflash
ABC	Adbri Limited	2106.82	3.21	-0.62	2.42	HOLD	20.89	21.86	-17.86	-4.45	2.95	2.88	N/A
AMC	Amcor PLC	14144.31	15.74	-0.51	16.20	BUY	17.13	16.22	2.04	5.65	4.55	4.28	N/A
BKW	Brickworks Limited	3031.74	20.00	-0.94	20.20	BUY	18.66	30.59	-35.27	-38.99	2.90	2.99	N/A
BLD	Boral Limited	6103.76	4.97	-0.20	4.30	HOLD	29.39	31.58	-57.97	-6.92	2.01	0.82	N/A
CSR	CSR Limited	2237.61	4.66	1.08	3.98	HOLD	19.83	18.00	-35.95	10.17	4.27	2.90	CSR Limited sale of land at Horsley Park
FBU	Fletcher Building	3362.97	4.07	-0.25	3.91	BUY	66.59	19.79	-85.07	236.50	0.67	2.61	N/A
IPL	Inditec Pivot	4156.36	2.12	-0.93	2.40	BUY	18.58	15.47	31.53	20.09	1.42	3.07	N/A
JHX	James Hardie Indust	15830.79	35.25	-1.15	34.95	BUY	29.23	29.24	21.15	-0.02	0.78	0.00	N/A
NUF	Nufarm Limited	1522.58	3.95	-1.50	4.80	BUY	-44.68	36.63	-137.02	221.98	0.17	0.73	N/A
ORA	Orora Limited	2442.37	2.52	-0.40	2.50	HOLD	15.13	16.58	-26.79	-8.76	24.24	4.44	Appendix 3G
ORI	Orica Limited	6757.88	16.11	-3.24	18.50	BUY	19.55	16.92	-13.72	15.53	2.42	3.24	Business Update - FY20 Full Year Results & AGM
PGH	Pact Group Hldgs Ltd	822.14	2.35	-1.67	2.78	HOLD	12.61	11.45	-16.68	10.07	0.00	3.09	N/A

## ➤ Gold stocks:

Code	Company Name	Market Cap (\$m)	Price (\$)	Daily Price Change (%)	Consensus Target Price (\$)	Consensus Rating	2020 PE	2021 PE	2020 EPS GROWTH	2021 EPS GROWTH	2020 Div Yield	2021 Div Yield	Newsflash
ALK	Alkane Resources Ltd	857.36	1.44	0.00	1.05	BUY	57.62	36.00	-37.46	60.06	0.00	0.00	N/A
BGL	Bellvue Gold Ltd	974.28	1.23	6.03	1.48	STRONG BUY	-84.83	-153.75	-31.82	44.83	0.00	0.00	N/A
DCN	Dacian Gold Ltd	222.60	0.41	2.50	0.41	HOLD	-4.27	6.89	-526.22	161.98	0.00	0.00	N/A
DEG	De Grey Mining	1650.35	1.39	6.95	1.06	STRONG BUY	N/A	N/A	N/A	N/A	0.00	0.00	Thick High Grade near surface hits continue at Falcon
EVN	Evolution Mining Ltd	10080.82	6.12	3.73	5.50	HOLD	27.75	20.59	67.27	34.75	2.01	2.50	Preliminary September Quarter Results
GOR	Gold Road Res Ltd	1341.89	1.55	1.64	2.00	BUY	16.61	12.59	11139.76	32.00	0.55	2.11	N/A
NCM	Newcrest Mining	25525.56	31.80	1.73	36.45	HOLD	26.19	15.89	8.49	64.85	0.83	1.12	N/A
NST	Northern Star	11818.35	16.03	0.50	16.23	HOLD	32.00	17.33	72.00	84.67	0.93	1.39	NST: Investor Presentation - Diggers & Dealers Conference
PRU	Perseus Mining Ltd	1715.92	1.42	1.07	1.65	BUY	26.61	15.58	1376.94	70.83	0.00	0.00	N/A
RED	Red 5 Limited	601.03	0.31	0.00	0.50	BUY	43.57	-76.25	-41.67	-157.14	0.00	0.00	N/A
RMS	Ramelius Resources	1771.32	2.20	0.46	2.40	BUY	17.27	9.27	206.99	86.22	0.45	1.59	Diggers and Dealers Presentation
RRL	Regis Resources	2591.70	5.11	0.59	5.75	HOLD	12.18	9.00	22.23	35.28	3.39	3.60	N/A
RSG	Resolute Mining	1070.78	0.99	2.06	1.59	BUY	11.06	5.94	39.60	86.27	1.79	1.96	N/A
SAR	Saracen Mineral	6601.52	5.97	0.17	6.10	HOLD	27.08	17.86	82.89	51.69	0.22	1.02	Diggers and Dealers Presentation
SBM	St Barbara Limited	2186.61	3.08	-0.65	4.00	BUY	13.86	8.62	-19.77	60.74	2.77	2.65	N/A
SLR	Silver Lake Resource	2158.96	2.45	0.00	2.64	BUY	16.07	12.32	207.03	30.36	0.00	0.00	N/A
SSR	SSR Mining Inc.	411.89	25.80	1.53	30.00	BUY	17.00	7.73	35.21	120.11	0.00	8.35	N/A
WAF	West African Res Ltd	1033.80	1.21	2.54	1.30	BUY	10.80	3.34	1593.33	223.81	0.00	0.00	N/A
WGX	Westgold Resources.	1109.41	2.71	2.65	3.20	STRONG BUY	27.56	10.81	495.94	154.93	0.00	0.25	N/A



## ➤ Mining (Ex Gold) stocks:

Code	Company Name	Market Cap (\$m)	Price (\$)	Daily Price Change (%)	Consensus Target Price (\$)	Consensus Rating	2020 PE	2021 PE	2020 EPS GROWTH	2021 EPS GROWTH	2020 Div Yield	2021 Div Yield	Newsflash
AMI	Aurelia Metals Ltd	458.84	0.53	0.00	0.75	STRONG BUY	10.79	7.95	-9.87	35.61	0.95	2.73	N/A
AWC	Alumina Limited	4105.88	1.43	0.71	1.95	BUY	18.78	17.07	-55.52	10.01	4.93	5.26	N/A
BHP	BHP Group Limited	107759.24	36.44	-0.38	40.00	BUY	14.47	12.51	-10.20	15.66	4.67	5.54	N/A
BSL	BlueScope Steel Ltd	7178.90	14.47	1.54	13.60	BUY	20.69	27.39	-60.76	-24.44	0.84	0.89	N/A
CIA	Champion Iron Ltd	1509.32	3.11	-2.51	3.90	BUY	9.63	4.95	-16.87	94.63	0.00	0.00	N/A
CMM	Capricorn Metals	622.38	1.87	3.31	1.70	HOLD	-86.98	60.32	N/A	244.19	0.00	0.00	N/A
FMG	Fortescue Metals Grp	52188.46	16.86	-0.53	15.80	HOLD	7.85	7.35	54.22	6.83	9.94	9.80	Extension of Share Buy-back Programme
GXY	Galaxy Resources	532.32	1.30	-0.38	1.20	HOLD	-27.14	-31.73	42.30	14.47	0.00	0.00	N/A
IGO	IGO Limited	2670.40	4.52	0.00	5.30	HOLD	16.88	20.31	99.92	-16.86	2.34	2.40	Appendix 3G
ILU	Iluka Resources	3990.95	9.52	0.85	10.00	BUY	20.79	13.92	-31.71	49.34	0.33	3.27	N/A
IMD	Imdex Limited	570.89	1.45	0.35	1.58	BUY	23.75	31.88	-16.29	-25.48	2.15	1.23	N/A
INR	Ioneer Ltd	344.84	0.21	0.00	0.50	-	-0.73	-0.28	N/A	-162.01	0.00	0.00	N/A
JMS	Jupiter Mines.	548.52	0.28	0.00	0.40	BUY	5.60	17.50	N/A	-68.00	22.32	7.62	N/A
LYC	Lynas Corporation	2432.91	2.70	0.00	3.00	STRONG BUY	-414.75	39.13	-113.75	1159.91	0.00	0.00	Date of Quarterly Report and Briefing
MAH	Macmahon Holdings	527.97	0.25	0.00	0.37	STRONG BUY	8.75	8.17	-91.04	7.14	2.04	2.99	N/A
MGX	Mount Gibson Iron	859.79	0.72	-0.69	0.93	STRONG BUY	7.87	7.54	15.82	4.37	4.17	4.86	Quarterly Activities Report
MIN	Mineral Resources.	4794.15	25.19	-0.90	26.00	HOLD	13.34	8.25	95.65	61.81	3.14	5.14	N/A
MLD	MACA Limited	229.15	0.83	-2.92	1.31	STRONG BUY	7.48	6.34	48.00	18.02	5.72	6.02	N/A
NIC	Nickel Mines Limited	1585.43	0.78	4.70	1.05	BUY	11.85	6.75	N/A	75.52	1.43	3.91	N/A
ORE	Orocobre Limited	990.85	2.88	0.00	2.85	HOLD	-24.51	-32.22	-150.33	23.93	0.00	0.00	N/A
OZL	OZ Minerals	4822.90	14.68	0.82	14.02	BUY	26.60	14.72	4.92	80.68	1.42	1.68	N/A
PLS	Pilbara Min Ltd	835.17	0.38	0.00	0.30	HOLD	-11.72	-28.22	-93.94	58.47	0.00	0.00	Quarterly Operational Update
PRN	Perenti Global Ltd	807.14	1.17	1.30	1.68	BUY	7.56	7.31	-2.71	3.33	5.62	5.91	N/A
RIO	Rio Tinto Limited	36193.58	96.64	-0.88	104.50	BUY	10.50	10.63	-3.22	-1.22	6.22	6.13	N/A
S32	South32 Limited	10613.33	2.19	0.00	2.70	BUY	40.76	19.17	-81.90	112.59	1.83	2.22	N/A
SFR	Southfire Resources	780.74	4.37	-0.23	5.50	BUY	8.93	7.38	-27.98	21.11	3.24	3.46	N/A
SGM	Sims Limited	1657.24	8.35	1.46	9.44	HOLD	-29.00	40.30	-136.83	171.96	1.11	0.92	N/A
WSA	Western Areas Ltd	615.45	2.24	0.00	2.65	BUY	13.79	17.48	188.76	-21.11	1.08	0.94	N/A

## ➤ Industrial stocks:

Code	Company Name	Market Cap (\$m)	Price (\$)	Daily Price Change (%)	Consensus Target Price (\$)	Consensus Rating	2020 PE	2021 PE	2020 EPS GROWTH	2021 EPS GROWTH	2020 Div Yield	2021 Div Yield	Newsflash
AIA	Auckland Internation	10293.13	6.88	-1.57	6.73	HOLD	66.30	-1893.23	-52.52	-103.50	0.38	0.00	N/A
ALQ	ALS Ltd	4713.30	9.70	-0.72	9.29	BUY	24.94	27.89	7.22	-10.58	1.72	1.68	N/A
ALX	Atlas Arteria	6118.54	6.36	-0.31	6.99	BUY	51.28	17.26	-59.82	197.07	2.35	5.60	N/A
AMA	AMA Group Limited	484.38	0.67	0.76	0.80	BUY	95.00	31.97	-87.15	197.14	0.12	0.00	N/A
ASB	Austal Limited	1236.88	3.50	1.74	4.38	BUY	14.66	14.39	49.48	1.84	2.00	2.56	LCS 26 completes acceptance trials
AZI	Aurizon Holdings Ltd	8252.11	4.22	-2.09	5.40	BUY	15.65	16.18	20.99	-3.25	6.39	6.21	On-Market Buy-back Appendix 3E
BIN	Bingo Industries Ltd	1785.37	2.78	1.83	2.56	BUY	35.24	43.51	-6.08	-19.01	1.12	0.92	2020 Annual Report
BXB	Brambles Limited	15959.19	10.62	0.19	12.25	BUY	22.63	21.64	-17.65	4.59	3.93	3.08	Change of Directors Interest Notice
CIM	Cimic Group Ltd	7017.38	21.79	-1.71	27.95	BUY	10.59	9.83	-16.47	7.72	3.27	6.39	N/A
CWY	Cleanaway Waste Ltd	4733.07	2.24	-2.61	2.45	BUY	32.36	28.83	-1.68	12.25	1.71	1.94	Appendix 3Y
DOW	Downer EDI Limited	3464.38	4.92	-0.40	5.29	BUY	17.66	13.40	-43.40	31.82	2.99	3.09	N/A
EHL	Emeco Holdings	470.61	0.86	-0.58	1.19	BUY	4.24	6.53	10.52	-35.17	0.00	0.00	N/A
EOS	Electro Optic Sys.	883.13	6.08	2.88	7.14	BUY	34.74	27.14	-9.79	28.00	0.00	0.00	N/A
GWA	GWA Group Ltd	757.53	2.83	-1.39	2.60	HOLD	15.43	18.41	-8.14	-16.16	4.74	3.83	N/A
IPH	IPH Limited	1535.05	7.21	1.41	8.78	BUY	19.82	19.69	20.76	0.64	3.97	4.06	N/A
MMS	McMillan Shakespeare	721.19	9.35	0.32	9.90	HOLD	10.67	10.17	-16.28	4.84	6.18	6.04	N/A
MND	Monadelphous Group	992.26	10.41	-0.67	11.00	BUY	26.88	18.00	-41.75	49.33	2.74	4.03	N/A
NWH	NRW Holdings Limited	917.37	2.16	0.47	2.76	STRONG BUY	10.38	9.22	64.99	12.49	2.13	3.22	N/A
PET	Phoslock Env Tec Ltd	153.13	0.25	0.00	-	-	N/A	N/A	N/A	N/A	N/A	N/A	N/A
QAN	Qantas Airways	8147.71	4.30	-0.46	4.63	BUY	-83.90	-10.75	-108.78	-680.33	1.06	0.49	N/A
QUB	Qube Holdings Ltd	5183.75	2.76	0.36	3.08	BUY	42.82	46.15	-16.03	-7.21	1.80	1.69	N/A
RWC	Reliance Worldwide	3413.21	4.24	-1.85	4.33	HOLD	26.68	21.42	-17.70	24.55	1.84	2.21	N/A
SIQ	Smartgrp Corporation	798.25	5.95	-1.00	6.93	HOLD	12.55	11.53	-23.72	8.91	5.62	6.04	N/A
SSM	Service Stream	892.47	2.16	-0.92	2.55	STRONG BUY	15.16	15.16	1.06	0.00	4.23	4.37	N/A
SVW	Seven Group Holdings	7126.51	21.21	1.00	21.05	BUY	16.56	16.43	-6.33	-0.83	1.92	2.13	N/A
SYD	SYD Airport	16246.18	6.08	1.00	6.14	HOLD	-64.50	541.89	-156.71	111.90	0.05	2.09	N/A
TCL	Transurban Group	38225.05	13.93	-0.29	14.11	HOLD	394.28	3239.53	-75.50	-87.83	3.36	2.87	N/A



## ➤ Consumer stocks:

Code	Company Name	Market Cap (\$m)	Price (\$)	Daily Price Change (%)	Consensus Target Price (\$)	Consensus Rating	2020 PE	2021 PE	2020 EPS GROWTH	2021 EPS GROWTH	2020 Div Yield	2021 Div Yield	Newsflash
ALG	Ardentleisuregrpltd	268.64	0.59	4.46	0.70	BUY	-5.56	-4.29	-406.01	-29.69	0.00	0.00	N/A
ALL	Aristocrat Leisure	19673.55	30.85	0.13	32.30	BUY	41.92	26.39	-44.50	58.80	0.14	1.43	N/A
APE	Eagers Automotive	2851.96	11.13	0.27	10.00	BUY	37.86	25.83	-26.13	46.56	0.54	2.49	N/A
ARB	ARB Corporation.	2571.34	32.47	0.81	30.25	HOLD	53.70	34.74	-16.12	54.60	0.97	1.52	N/A
AX1	Accent Group Ltd	940.14	1.71	-1.73	1.85	BUY	16.01	15.40	8.31	3.99	3.53	5.29	N/A
BAP	Bapcor Limited	2582.93	7.85	3.15	7.73	BUY	27.70	26.18	-15.93	5.78	1.46	2.10	Bapcor FY21 1st Quarter Trading Update
BBN	Baby Bunting Grp Ltd	634.00	4.87	-2.01	5.27	BUY	32.91	25.63	30.40	28.38	1.99	2.67	N/A
BRG	Breville Group Ltd	3777.80	27.49	1.10	27.46	HOLD	46.31	42.47	13.97	9.03	1.31	1.61	N/A
CCX	City Chic Collective	683.70	2.94	-1.67	3.70	BUY	36.87	32.40	-2.15	13.79	0.00	0.63	N/A
CKF	Collins Foods Ltd	1224.10	10.57	0.67	10.65	BUY	31.36	26.98	-14.03	16.27	1.22	1.97	N/A
CTD	Corp Travel Limited	2175.27	17.33	1.88	16.40	BUY	61.34	291.55	-69.19	-78.96	1.04	0.08	N/A
CWN	Crown Resorts Ltd	6080.88	8.80	-2.00	10.58	BUY	38.48	257.31	-57.89	-85.05	4.03	4.30	VCGLR Show Cause Notice
DMP	Domino Pizza Enterpr	7173.65	82.20	-0.86	77.30	HOLD	47.85	40.70	3.16	17.58	1.39	1.73	N/A
FLT	Flight Centre Travel	2847.14	14.25	-0.35	14.06	HOLD	-9.81	-17.12	-165.47	42.68	0.00	0.00	N/A
GEM	G8 Education Limited	874.35	1.10	4.78	1.38	BUY	13.00	20.07	-41.52	-35.22	0.00	3.28	N/A
GUD	G.U.D. Holdings	1035.28	12.27	3.02	11.70	HOLD	20.98	19.52	-16.56	7.46	3.80	3.57	N/A
HVN	Harvey Norman	5806.39	4.67	0.21	5.00	BUY	13.74	11.87	9.97	15.71	4.46	6.42	N/A
IEL	Idp Education Ltd	5369.11	19.37	0.41	21.00	BUY	110.13	113.72	-34.68	-3.16	1.02	0.57	N/A
IVC	InvoCare Limited	1465.10	10.10	-0.69	10.75	HOLD	37.70	26.48	-45.06	42.39	2.67	3.14	N/A
JBH	JB Hi-Fi Limited	5708.55	50.21	1.05	47.00	HOLD	17.75	18.00	34.77	-1.37	3.48	3.73	N/A
JIN	Jumbo Interactive	761.25	12.27	0.66	13.89	BUY	31.04	29.95	-5.72	3.63	2.66	2.72	N/A
KGN	Kogan.Com Ltd	2326.85	22.14	0.50	22.00	BUY	75.10	46.07	59.93	63.03	1.00	1.58	N/A
KMD	Kathmandu Hold Ltd	864.98	1.19	-2.46	1.25	BUY	19.01	16.18	-49.59	17.44	1.05	3.53	N/A
LOV	Lovisa Holdings Ltd	949.94	8.46	-4.30	7.38	HOLD	20.69	38.96	18.57	-46.90	0.51	1.33	N/A
NCK	Nick Scall Limited	707.13	8.80	0.80	9.20	BUY	18.13	13.89	-5.88	30.49	5.09	6.17	N/A
PBH	Pointsbet Holdings	1996.23	11.30	-1.99	12.65	HOLD	-42.04	-34.04	N/A	-23.50	0.00	0.00	N/A
PMV	Premier Investments	3644.31	22.95	-0.04	20.50	HOLD	27.00	24.47	5.48	10.34	2.27	3.13	N/A
RDC	Redcape Hotel Group	499.74	0.88	-2.76	1.09	STRONG BUY	20.95	11.58	-46.15	80.95	5.34	7.90	N/A
SGR	The Star Ent Grp	3246.37	3.40	-0.29	3.66	BUY	32.51	34.61	-56.87	-6.05	3.14	0.00	N/A
SKC	Skycity Ent Grp Ltd	2166.58	2.85	0.00	3.52	STRONG BUY	39.32	54.17	-68.66	-27.41	3.26	1.93	N/A
SLK	Sealink Travel Grp	1297.29	5.93	-0.17	5.73	BUY	34.39	22.63	-27.44	51.95	1.81	2.22	N/A
SUL	Super Ret Rep Ltd	2599.04	11.56	0.43	11.53	BUY	15.77	15.30	-3.11	3.10	1.51	4.08	N/A
TAH	TABCORP Holdings Ltd	7804.33	3.46	-1.70	3.64	HOLD	25.70	23.79	-31.81	8.02	3.44	2.29	N/A
TPW	Temple & Webster Ltd	1565.89	12.96	-0.31	11.40	BUY	185.14	78.45	577.64	136.00	0.00	0.00	Response to Appendix 3Y Query
WEB	Webjet Limited	1420.42	4.20	0.24	3.70	HOLD	89.59	-21.61	-89.74	-514.63	1.04	0.00	N/A
WES	Wesfarmers Limited	52700.89	46.81	0.71	48.70	HOLD	26.53	26.97	1.42	-1.63	3.18	3.28	N/A

## ➤ Staple stocks:

Code	Company Name	Market Cap (\$m)	Price (\$)	Daily Price Change (%)	Consensus Target Price (\$)	Consensus Rating	2020 PE	2021 PE	2020 EPS GROWTH	2021 EPS GROWTH	2020 Div Yield	2021 Div Yield	Newsflash
AZM	The A2 Milk Company	10656.15	14.54	1.32	16.35	HOLD	29.61	29.00	27.90	2.09	0.00	0.00	Ceasing to be a substantial holder
AAC	Australian Agricul.	675.10	1.12	0.00	1.40	STRONG BUY	-36.13	-32.00	13.89	-12.90	0.00	0.00	N/A
AHY	Asaleo Care Limited	551.27	1.03	0.99	1.24	BUY	14.60	13.93	27.17	4.84	2.24	4.76	N/A
BGA	Bega Cheese Ltd	1131.73	5.28	0.38	5.70	HOLD	41.53	24.62	-31.16	68.72	1.65	2.20	N/A
BKL	Blackmores Limited	1257.41	65.73	1.14	67.00	HOLD	58.82	38.11	-67.91	54.33	0.00	1.65	N/A
BUB	Bubs Aust Ltd	462.10	0.82	7.24	0.86	SELL	-67.92	-407.50	N/A	83.33	0.00	0.00	N/A
BWX	BWX Limited	627.95	4.42	-1.78	5.02	BUY	36.91	33.17	30.87	11.27	0.92	1.12	Notice of Annual General Meeting
CCL	Coca-Cola Amatil	7240.00	10.23	2.30	9.85	BUY	24.33	20.52	-19.26	18.57	2.54	4.00	Coca-Cola Amatil Investor Session 2 November 2020
CGC	Costa Group Holdings	1511.13	3.72	-1.33	3.60	BUY	31.31	21.49	47.83	45.69	1.95	2.71	N/A
COL	Coles Group	23370.45	17.61	0.51	19.90	BUY	25.06	23.57	4.92	6.32	3.33	3.55	Change in substantial holding
ELD	Elders Limited	1836.34	11.80	0.08	11.81	BUY	17.90	15.87	30.59	12.76	1.71	2.05	N/A
FNP	Freedom Food Ltd	834.10	3.01	0.00	3.27	HOLD	72.83	29.32	-46.74	148.42	0.00	0.85	N/A
GNC	GrainCorp Limited	901.69	4.01	1.78	4.75	BUY	-288.70	21.03	95.91	1472.71	0.10	2.66	N/A
ING	Inghams Group	1152.21	3.06	-1.29	3.64	BUY	14.45	14.43	-24.90	0.14	4.56	5.06	N/A
MTS	Metcash Limited	2964.85	2.90	0.00	3.37	BUY	12.95	14.21	-2.29	-8.89	4.20	4.28	N/A
SHV	Select Harvests	635.87	6.46	-1.82	7.43	BUY	25.59	20.73	-49.17	23.46	2.19	2.88	Appendix 2A
SM1	Synlait Milk Ltd	934.19	5.11	-1.92	5.98	HOLD	12.32	12.66	-13.30	-2.65	0.00	0.00	N/A
TGR	Tassal Group Limited	771.37	3.72	1.92	4.75	BUY	11.66	11.30	-0.78	3.21	4.93	4.97	N/A
TWE	Treasury Wine Estate	6629.13	9.20	0.11	12.35	BUY	20.95	19.23	-28.27	8.92	2.95	3.33	N/A
UMG	United Malt Group	1265.53	4.26	0.71	4.73	BUY	22.15	18.29	N/A	21.09	0.61	2.86	N/A
WOW	Woolworths Group Ltd	47780.04	37.94	0.48	42.00	BUY	29.08	26.40	-1.31	10.16	2.52	2.76	N/A

## ➤ Healthcare stocks:

Code	Company Name	Market Cap (\$m)	Price (\$)	Daily Price Change (%)	Consensus Target Price (\$)	Consensus Rating	2020 PE	2021 PE	2020 EPS GROWTH	2021 EPS GROWTH	2020 Div Yield	2021 Div Yield	Newsflash
ANN	Ansell Limited	4985.58	38.92	0.34	41.00	HOLD	23.75	21.16	3.27	12.26	1.83	2.01	N/A
API	Australian Pharm.	517.29	1.03	-2.38	1.10	SELL	16.07	11.84	-40.79	35.74	0.98	6.60	N/A
AVH	Avita Therapeutics	568.35	7.55	1.62	15.00	BUY	-17.03	-10.98	-23.15	-55.05	0.00	0.00	Shelf Registration Statement Filed with the SEC
COH	Cochlear Limited	13796.94	212.80	1.39	204.00	HOLD	80.92	65.93	-43.41	22.74	0.76	0.56	N/A
CSL	CSL Limited	134360.30	296.67	0.46	315.87	BUY	45.89	42.88	3.38	7.02	0.97	1.04	N/A
CUV	Clinuvel Pharmaceut.	1166.08	23.29	-1.31	43.09	STRONG BUY	N/A	114.73	N/A	N/A	N/A	0.07	N/A
EHE	Estia Health Ltd	381.49	1.47	0.34	1.57	HOLD	14.25	21.60	-36.70	-34.02	5.56	3.95	N/A
FPH	Fisher & Paykel H.	18292.82	31.90	0.47	36.00	BUY	70.83	52.14	30.39	35.85	0.86	1.06	N/A
HLS	Healius	2205.45	3.51	-0.85	3.46	HOLD	33.40	22.01	-33.18	51.75	1.28	1.80	N/A
IDX	Integral Diagnostics	819.99	4.12	-0.24	4.60	BUY	27.14	22.57	-8.82	20.28	2.38	2.74	N/A
MSB	Mesoblast Limited	1976.80	3.34	-0.89	3.60	HOLD	-18.59	-20.58	50.74	9.70	0.00	0.00	N/A
MVF	Monash IVF Group Ltd	251.31	0.64	-0.78	0.73	BUY	13.70	13.52	-44.41	1.31	2.01	4.69	N/A
MVP	Medical Developments	346.49	5.33	0.95	8.61	BUY	694.92	380.71	-43.89	82.53	0.69	0.38	N/A
MYX	Mayne Pharma Ltd	537.30	0.32	0.00	0.37	HOLD	-213.33	44.14	-108.51	583.33	0.00	0.00	N/A
NAN	Nanosonics Limited	1690.64	5.65	0.53	5.50	SELL	126.80	139.85	25.52	-9.34	0.00	0.00	N/A
OPT	Opthea Limited	815.55	3.04	0.33	4.90	BUY	-20.73	69.61	-56.03	129.77	0.00	0.00	Opthea Launches Proposed US Initial Public Offering
PAR	Paradigm Bio.	657.24	3.00	3.09	2.54	HOLD	-39.74	-20.55	-98.68	-93.38	0.00	0.00	N/A
PME	Pro Medicus Limited	2867.90	27.75	0.84	29.00	HOLD	120.13	98.01	34.41	22.57	0.43	0.51	N/A
PNV	Polynovo Limited	1553.56	2.33	-0.85	2.50	BUY	-558.75	448.08	10.71	224.70	0.00	0.00	Notice of Annual General Meeting & Proxy
RHC	Ramsay Health Care	15779.10	68.98	0.06	70.00	HOLD	40.56	34.30	-40.63	18.25	0.94	1.30	N/A
RMD	ResMed Inc.	8618.19	24.63	2.16	26.20	HOLD	38.96	37.69	25.10	3.37	0.93	0.96	N/A
SHL	Sonic Healthcare	16486.22	34.38	-0.41	35.10	BUY	31.66	23.85	-6.40	32.71	2.20	2.97	N/A
SIG	Sigma Health Ltd	619.72	0.58	-0.85	0.72	BUY	45.78	16.78	-70.42	172.85	3.05	0.52	N/A
SPL	Starpharma Holdings	610.17	1.49	-1.65	2.03	STRONG BUY	-41.39	-60.82	-9.09	31.94	0.00	0.00	N/A
VRT	Virtus Health Ltd	352.11	4.46	1.83	4.00	BUY	17.58	17.47	-27.98	0.59	2.91	3.44	Genetic Testing Update

## ➤ Bank stocks:

Code	Company Name	Market Cap (\$m)	Price (\$)	Daily Price Change (%)	Consensus Target Price (\$)	Consensus Rating	2020 PE	2021 PE	2020 EPS GROWTH	2021 EPS GROWTH	2020 Div Yield	2021 Div Yield	Newsflash
AFG	Aust Finance Grp	614.60	2.31	0.87	2.08	BUY	15.08	16.38	11.33	-7.94	3.69	4.03	AFG RMBS Issue
ANZ	ANZ Banking Grp Ltd	52859.29	18.98	1.99	20.00	BUY	14.09	12.48	-39.73	12.86	3.01	4.18	N/A
BEN	Bendigo and Adelaide	3370.70	6.41	0.79	6.83	SELL	11.10	12.63	-28.57	-12.13	5.71	3.99	N/A
BOQ	Bank of Queensland.	2857.77	6.30	0.16	6.00	HOLD	13.36	13.53	-40.13	-1.22	1.46	4.30	N/A
CBA	Commonwealth Bank.	120124.07	68.61	1.33	67.56	HOLD	16.40	17.60	-14.18	-6.79	3.96	3.70	COVID-19 loan repayment deferral data for September 2020
GMA	Genworth Mortgage	651.77	1.56	-1.27	2.37	HOLD	-9.97	12.00	-156.91	183.07	0.80	4.65	N/A
MYS	MyState Limited	338.67	3.79	2.99	4.30	BUY	11.18	10.40	-0.59	7.45	6.58	6.80	N/A
NAB	National Aust. Bank	61491.85	18.99	1.61	20.50	BUY	14.84	13.08	-30.54	13.44	3.27	4.29	N/A
VUK	Virgin Money Uk PLC	1463.36	1.54	0.65	1.80	HOLD	16.85	8.29	-80.77	103.34	0.00	0.95	N/A
WBC	Westpac Banking Corp	65768.78	18.55	1.87	19.80	BUY	19.64	12.57	-52.33	56.18	1.61	4.30	N/A

## ➤ Diversified Financials / Insurance stocks:

Code	Company Name	Market Cap (\$m)	Price (\$)	Daily Price Change (%)	Consensus Target Price (\$)	Consensus Rating	2020 PE	2021 PE	2020 EPS GROWTH	2021 EPS GROWTH	2020 Div Yield	2021 Div Yield	Newsflash
AEF	Australian Ethical	515.86	4.60	0.22	-	-	N/A	N/A	N/A	N/A	N/A	N/A	N/A
AMP	AMP Limited	4862.79	1.42	0.00	1.55	HOLD	14.23	12.69	-43.19	12.11	7.17	4.04	N/A
ASX	ASX Limited	15929.01	82.31	0.04	73.00	SELL	31.70	33.04	1.34	-4.05	2.84	2.73	N/A
AUB	AUB Group Ltd	1311.31	17.58	-0.28	17.00	BUY	25.52	22.43	7.70	13.79	2.63	2.93	Change in substantial holding for AUB
CCP	Credit Corp Group	1283.71	19.11	0.21	22.03	BUY	14.27	18.69	-5.22	-23.62	2.79	2.68	N/A
CGF	Challenger Limited	2837.58	4.23	0.71	4.50	HOLD	8.36	10.71	-11.37	-21.93	4.52	4.90	Change in substantial holding for AUB
CNI	Centuria Capital	1191.81	2.24	0.90	2.30	STRONG BUY	18.72	20.13	-5.77	-7.04	4.38	3.74	N/A
ECX	Eclixp Group Ltd	556.17	1.73	-0.86	1.70	BUY	13.80	12.99	17.04	6.20	0.00	1.84	N/A
FXL	FlexiGroup Limited	557.18	1.13	0.44	1.36	HOLD	10.89	10.66	-47.24	2.18	4.31	2.35	N/A
HUB	HUB24 Ltd	1281.58	20.76	1.91	16.50	BUY	96.61	71.19	38.51	35.72	0.38	0.56	N/A
IAG	Insurance Australia	10931.25	4.79	1.27	5.80	BUY	33.69	15.56	-64.46	116.52	2.17	4.55	N/A
IHL	IOOF Holdings Ltd	2123.29	3.29	0.61	4.61	BUY	9.90	12.47	-35.24	-20.59	7.95	5.32	N/A
JHG	Janus Henderson	1389.19	38.00	1.96	35.50	BUY	11.11	11.24	-6.96	-1.17	5.51	5.59	N/A
MFG	Magellan Fin Grp Ltd	11509.77	63.30	0.91	60.00	HOLD	26.49	25.83	18.82	2.55	3.42	3.54	N/A
MNY	Money3 Corporation	426.16	2.28	-0.87	2.86	BUY	16.11	12.30	-29.34	30.98	4.39	4.90	N/A
MPL	Medibank Private Ltd	7187.95	2.58	-1.15	2.80	HOLD	20.09	19.02	-22.11	5.63	4.44	4.48	N/A
MQG	Macquarie Group Ltd	46912.33	129.61	-0.12	130.92	BUY	15.83	21.32	-5.84	-25.75	4.13	2.80	N/A
NGI	Navigator Global Ltd	252.95	1.55	-0.64	2.27	STRONG BUY	6.45	10.74	-14.29	-39.98	13.90	9.16	N/A
NHF	NIB Holdings Limited	1952.10	4.24	-0.70	4.80	BUY	17.56	16.22	-31.17	8.23	4.01	3.74	N/A
NWL	Netwealth Group	4257.12	17.89	-0.11	13.75	HOLD	100.26	84.30	21.64	18.93	0.79	0.93	N/A
OBL	Omni Bridgeway Ltd	993.38	3.98	1.79	5.45	BUY	-176.89	7.87	40.94	2346.67	1.51	1.76	N/A
OFX	OFX Group Ltd	285.33	1.17	-0.43	-	-	19.42	19.42	-23.57	0.00	4.29	N/A	N/A
PDL	Pendal Group Ltd	1946.50	6.08	0.83	6.89	BUY	12.80	13.60	-7.59	-5.89	6.27	6.26	N/A
PNI	Pinnacle Investment	990.46	5.24	-0.95	6.01	BUY	30.38	28.48	6.81	6.67	2.76	2.99	N/A
PPT	Perpetual Limited	1691.31	30.20	0.90	34.80	BUY	15.71	15.25	-25.03	3.01	5.69	4.83	N/A
PTM	Platinum Asset	1936.04	3.26	-1.21	3.20	SELL	12.95	15.11	-7.42	-14.27	7.57	6.43	N/A
QBE	QBE Insurance Group	13502.53	9.09	-0.98	12.07	BUY	-21.23	12.82	-150.03	265.60	1.82	4.67	N/A
SDF	Steadfast Group Ltd	2944.13	3.44	1.47	3.90	BUY	22.28	20.60	12.01	8.17	2.55	3.00	N/A
SUN	Suncorp Group Ltd	11248.13	8.91	1.37	10.26	BUY	16.97	13.63	-37.70	24.44	4.12	5.09	N/A
ZIP	Zip Co Ltd.	3902.35	7.99	5.69	8.35	HOLD	-79.40	-74.41	-262.63	-6.71	0.00	0.00	N/A

## ➤ Property stocks:

Code	Company Name	Market Cap (\$m)	Price (\$)	Daily Price Change (%)	Consensus Target Price (\$)	Consensus Rating	2020 PE	2021 PE	2020 EPS GROWTH	2021 EPS GROWTH	2020 Div Yield	2021 Div Yield	Newsflash
ABP	Abacus Property Grp.	1957.17	2.93	-0.34	2.90	BUY	15.70	16.17	-33.95	-2.89	6.24	6.01	N/A
ADI	Apn Industria REIT	521.47	2.60	-1.52	2.73	BUY	13.20	13.85	7.65	-4.74	6.64	6.60	N/A
ARF	Arena REIT.	907.16	2.66	0.00	2.82	BUY	16.80	17.85	14.08	-5.87	5.27	5.38	N/A
AVN	Aventus Group	1344.68	2.38	-1.24	2.50	BUY	13.57	13.27	-2.56	2.24	5.01	5.91	N/A
BWP	BWP Trust	2620.93	4.08	0.00	3.23	SELL	22.76	22.64	-2.69	0.56	4.45	4.43	N/A
CHC	Charter Hall Group	6255.39	13.36	-0.52	13.10	BUY	19.85	25.23	45.13	-21.31	2.68	2.84	N/A
CIP	Centuria I REIT	1619.02	3.18	0.00	3.21	HOLD	16.94	18.03	-43.38	-6.03	5.76	5.45	N/A
CLW	Chtr H Lwr	2588.53	5.11	-0.78	5.47	BUY	17.63	17.32	6.94	1.79	5.48	5.71	N/A
CMW	Cromwell Prop	2326.02	0.88	-1.12	1.01	HOLD	11.34	12.62	0.96	-10.13	8.95	8.95	N/A
COF	Centuria Office REIT	1070.21	2.06	-0.96	2.27	BUY	11.46	11.37	-14.55	0.83	8.62	8.06	N/A
CQE	Charter Hall Soc In	1027.06	2.83	-0.70	3.20	BUY	16.50	18.26	-11.06	-9.62	5.65	5.27	N/A
CQR	Charter Hall Retail	2043.98	3.58	0.00	3.55	HOLD	12.17	13.94	-5.13	-12.65	6.96	6.34	N/A
CWP	Cedar Woods Prop.	475.64	5.71	-3.38	5.80	HOLD	20.69	14.95	-57.11	38.41	3.15	3.59	N/A
DXS	Dexus	9984.50	9.10	-0.55	9.57	BUY	14.71	14.79	1.18	-0.60	5.43	5.19	N/A
GDI	GDI Property Grp	579.97	1.07	0.00	1.48	STRONG BUY	N/A	19.81	N/A	N/A	N/A	7.29	N/A
GMG	Goodman Group	34399.13	18.60	-0.11	18.73	HOLD	32.35	30.03	12.11	7.72	1.61	1.61	N/A
GOZ	Growthpoint Property	2685.97	3.48	0.00	3.56	BUY	14.90	14.61	1.19	2.01	6.29	5.80	N/A
GPT	GPT Group	8025.47	4.10	-0.49	4.35	BUY	15.95	13.48	-20.27	18.37	4.74	5.79	N/A
HPI	Hotel Property	506.40	3.12	-2.80	3.15	BUY	15.60	15.60	2.56	0.00	6.41	6.28	N/A
IAP	Investec Aust Prop	809.97	1.32	-0.75	1.70	-	15.11	14.29	N/A	5.75	6.81	6.43	N/A
INA	Ingenia Group	1509.13	4.60	-0.43	5.19	BUY	21.80	21.55	10.24	1.18	2.39	2.27	N/A
LIC	Lifestyle Communit.	1055.91	10.13	0.30	9.90	BUY	38.15	28.42	-30.86	34.27	0.59	0.57	N/A
LLC	Lendlease Group	8245.45	11.86	-1.00	13.77	BUY	83.46	18.26	-82.17	357.11	2.75	2.56	N/A
MGR	Mirvac Group	8898.88	2.27	0.44	2.41	BUY	14.43	16.09	-5.39	-10.33	4.29	4.42	N/A
NSR	National Storage	1892.91	1.87	0.54	1.83	HOLD	22.64	23.42	-16.06	-3.35	4.29	4.25	N/A
RFF	Rural Funds Group	778.22	2.35	2.17	2.43	BUY	15.33	15.91	10.98	-3.59	4.58	4.80	N/A
SCG	Scentre Grp	11937.87	2.32	0.87	2.35	HOLD	15.21	12.01	-39.02	26.65	3.74	6.71	N/A
SCP	SCA Property Group	2422.29	2.25	0.00	2.31	HOLD	14.91	15.56	-6.21	-4.15	5.88	5.58	N/A
SGP	Stockland	9635.11	4.03	-0.25	4.02	HOLD	12.51	13.19	-9.98	-5.18	6.04	6.02	Appendix 2A - Securities for FY20 Short Term Incentive Plan
URW	UnibailRodawestfield	598.36	2.81	3.69	3.88	HOLD	4.20	4.04	-34.40	4.01	9.30	13.54	N/A
VCC	Vicinity Centres	6509.75	1.43	-0.35	1.38	HOLD	9.77	16.55	-18.15	-40.99	5.67	5.75	N/A
WPR	Waypoint REIT	2143.11	2.72	-0.37	2.88	BUY	18.09	17.04	0.94	6.12	5.52	5.87	N/A

## ➤ IT stocks:

Code	Company Name	Market Cap (\$m)	Price (\$)	Daily Price Change (%)	Consensus Target Price (\$)	Consensus Rating	2020 PE	2021 PE	2020 EPS GROWTH	2021 EPS GROWTH	2020 Div Yield	2021 Div Yield	Newsflash
AD8	Audinate Group Ltd	460.19	5.96	-1.49	5.75	BUY	-613.80	-147.78	-331.19	-315.35	0.00	0.00	N/A
ALU	Altium Limited	4854.90	38.04	2.62	36.30	HOLD	82.38	66.00	-23.62	24.83	1.15	1.37	N/A
APT	Afterpay Limited	25452.21	92.00	2.78	92.98	BUY	-1061.25	1155.49	-120.64	191.84	0.00	0.00	N/A
APX	Appen Limited	4283.51	36.21	2.84	40.00	BUY	59.65	42.12	16.31	41.62	0.31	0.43	N/A
BVS	Bravura Solution Ltd	835.42	3.68	8.88	4.80	HOLD	22.67	21.78	9.68	4.11	3.00	3.21	Bravura acquires Delta Financial Systems
CDA	Codan Limited	2229.25	12.58	1.86	10.50	BUY	35.97	29.20	41.79	23.17	1.43	1.82	N/A
CPU	Computershare Ltd	6998.98	13.34	3.09	14.21	HOLD	17.40	19.19	-24.88	-9.30	3.00	3.16	N/A
DDR	Dicker Data Limited	1479.97	8.60	0.00	-	-	N/A	N/A	N/A	N/A	N/A	N/A	N/A
DTL	Data#3 Limited	1070.13	7.03	1.15	4.20	HOLD	46.10	39.72	27.08	16.07	1.98	2.28	Notice of AGM and proxy form
ELO	Elmo Software	544.07	6.22	-1.27	7.00	BUY	-28.61	-22.99	-93.67	-24.47	0.00	0.00	N/A
EML	EML Payments Ltd	1189.62	3.27	-0.61	4.15	BUY	37.69	31.87	86.84	18.27	0.00	0.00	N/A
HSN	Hansen Technologies	805.15	4.05	0.00	4.20	BUY	20.35	16.49	17.06	23.45	1.52	2.48	N/A
IFM	Infomedia Ltd	598.47	1.58	-0.94	2.00	BUY	29.17	28.64	6.74	1.85	2.62	2.56	N/A
IRE	IRESS Limited	1899.59	10.09	2.64	11.62	HOLD	26.07	24.66	-8.98	5.72	4.29	4.47	N/A
IRI	Integrated Research	642.21	3.72	-0.27	4.25	STRONG BUY	26.57	24.31	11.11	9.29	2.15	2.15	N/A
LNK	Link Admin Hldg	2119.78	4.99	25.06	4.38	HOLD	19.54	22.29	-31.34	-12.31	2.36	2.28	Non-binding indicative proposal to acquire Link Group
MP1	Megaport Limited	2424.87	15.83	0.83	17.15	BUY	-65.96	-82.79	2.17	20.33	0.00	0.00	N/A
NEA	Nearmap Ltd	1186.31	2.53	2.43	3.13	BUY	-31.23	-42.79	-636.36	27.00	0.00	0.00	Appendix 2A
NXT	Nextdc Limited	5820.61	13.16	3.05	13.40	BUY	-351.97	-1413.53	-169.38	75.10	0.00	0.00	A\$1.5 Billion Senior Debt
TNE	Technology One	2659.73	8.47	1.68	8.48	HOLD	42.32	37.96	14.69	11.49	1.51	1.73	N/A
TYR	Tyro Payments	1873.67	4.00	6.67	3.50	HOLD	-90.23	-120.30	N/A	24.99	0.00	0.00	COVID-19 Trading Update 30 - Week Ended 9 October 2020
WTC	WiseTech Global Ltd	8689.62	27.12	1.04	26.00	HOLD	124.26	98.71	21.32	25.89	0.13	0.16	N/A
XRO	Xero Ltd	16195.69	114.87	1.31	85.00	HOLD	1016.37	436.08	423.74	133.07	0.00	0.00	N/A

➤ **Communication stocks:**

Code	Company Name	Market Cap (\$m)	Price (\$)	Daily Price Change (%)	Consensus Target Price (\$)	Consensus Rating	2020 PE	2021 PE	2020 EPS GROWTH	2021 EPS GROWTH	2020 Div Yield	2021 Div Yield	Newsflash
CAR	Carsales.Com Ltd.	5451.74	22.19	0.27	19.17	HOLD	45.29	38.59	-9.23	17.38	1.87	2.15	N/A
CNU	Chorus Limited	3582.60	8.12	0.74	-	-	72.41	76.27	-6.84	-5.07	2.78	2.89	CIP Capital Change Notice
DHG	Domain Holdings Aus	2307.84	3.94	-0.25	3.50	HOLD	128.59	74.98	-57.11	71.51	0.76	0.84	Change of Directors Interest Notice-J Pellegrino
EVT	Event Hospitality	1542.64	9.24	-3.45	9.35	BUY	54.84	-308.00	-75.79	-117.80	2.27	1.68	Sale of Cinestar - Transaction Update
NEC	Nine Entertainment	3316.99	1.95	0.26	2.05	BUY	22.27	21.80	-36.02	2.15	3.58	3.29	N/A
NWS	News Corp.	930.33	19.71	-1.25	25.00	BUY	79.51	55.07	-59.05	44.37	1.30	1.49	N/A
OML	Ooh!Media Limited	840.34	1.45	1.76	1.25	BUY	-54.73	36.49	-116.49	250.00	0.00	0.42	N/A
REA	REA Group	15757.03	119.74	0.09	108.00	HOLD	59.64	51.85	-15.40	15.01	0.88	1.01	N/A
SEK	Seek Limited	8257.38	23.44	0.21	20.45	HOLD	80.21	173.24	-47.41	-53.70	0.74	0.42	SEEK 2020 AGM - Letter to Shareholders
SLC	Superloop Limited	340.26	0.91	-2.15	1.23	BUY	-9.72	-13.87	-30.69	29.91	0.13	0.11	N/A
SPK	Spark New Zealand	7981.57	4.34	0.70	-	HOLD	20.67	21.28	2.42	-2.86	5.41	5.16	N/A
SKL	Sthn Cross Media	449.16	0.17	-2.94	0.18	HOLD	7.11	12.31	-67.42	-42.24	7.27	0.00	N/A
TLS	Telstra Corporation.	32944.44	2.78	0.36	3.50	BUY	15.08	20.38	-9.31	-26.02	5.73	5.49	N/A
TPG	TPG Telecom Limited	13833.50	7.50	0.81	8.71	HOLD	50.99	37.67	N/A	35.35	0.82	1.63	N/A
UWL	Uniti Group Ltd	725.67	1.35	-7.22	1.94	STRONG BUY	27.42	20.61	354.73	33.02	0.00	0.00	N/A
VOC	Vocus Group Ltd	2292.28	3.66	-0.81	3.40	HOLD	21.53	21.30	4.41	1.09	0.00	0.00	N/A
VRL	Village Roadshow Ltd	419.90	2.15	0.00	2.20	HOLD	-11.94	-18.04	-254.28	33.78	0.47	0.00	N/A

➤ **Utility stocks:**

Code	Company Name	Market Cap (\$m)	Price (\$)	Daily Price Change (%)	Consensus Target Price (\$)	Consensus Rating	2020 PE	2021 PE	2020 EPS GROWTH	2021 EPS GROWTH	2020 Div Yield	2021 Div Yield	Newsflash
AGL	AGL Energy Limited.	8410.96	13.35	-1.11	14.47	HOLD	10.65	13.45	-19.06	-20.81	7.15	7.34	N/A
APA	APA Group	12589.47	10.60	-0.66	11.24	HOLD	40.09	40.55	2.37	-1.13	4.72	4.74	N/A
AST	AusNet Services Ltd	7431.04	1.97	-0.51	1.90	HOLD	26.72	27.43	5.46	-2.58	5.12	4.69	N/A
SKI	Spark Infrastructure	3615.13	2.09	0.48	2.28	HOLD	45.55	56.99	-23.90	-20.07	6.58	5.88	N/A

## Disclaimer

This document was prepared by Deep Data Analytics. Deep Data Analytics and its related bodies corporate ("DDA"), its directors and/or employees charge a subscription for this report. Deep Data Analytics as principal, its directors and/or employees and their associates may hold securities in the companies mentioned in this report. Deep Data Analytics may seek to do business with any of the companies outlined in this report and should not be considered independent. This document contains Deep Data Analytics proprietary processed data and publicly available information. The information has not been verified or audited, and you are strongly advised to make your own independent assessment and investigation in respect of any matters contained in the document, including to seek independent professional advice. The document has been provided to you for your general information purposes only. It does not consider your particular investment objectives, financial situation or other specific needs. This report has been provided to you on the condition that it is purely general advice and not to be considered as personal advice at any level.

Deep Data Analytics or their respective directors, officers, employees or shareholders makes any representation or warranty, expressed or implied, and takes no responsibility, in respect of the accuracy, reliability, completeness or thoroughness of any of the information contained in this document. Each of those parties, to the maximum extent permitted by law, expressly disclaims, and as a recipient, you expressly release each of those parties from, all liabilities, including (without limitation) liability for negligence in respect of, any part of the information contained in the document. No such parties are under any obligation to update any information in this document or correct any inaccuracies or omissions that may exist or become apparent. Neither this document nor any additional information which may subsequently be provided to a recipient shall constitute or form part of any offer, solicitation, invitation, advice or recommendation to sell or acquire any securities or assets.

Deep Data Analytics provides this financial advice as an honest and reasonable opinion held at a point in time about an investment's risk profile and merit and the information is provided by the Deep Data Analytics in good faith. The views of the adviser(s) do not necessarily reflect the views of the AFS Licensee. Deep Data Analytics has no obligation to update the opinion unless Deep Data Analytics is currently contracted to provide such an updated opinion. Deep Data Analytics does not warrant the accuracy of any information it sources from others. All statements as to future matters are not guaranteed to be accurate and any statements as to past performance do not represent future performance. Assessment of risk can be subjective. Portfolios of equity investments need to be well diversified and the risk appropriate for the investor. Equity investments in listed or unlisted companies yet to achieve a profit or with an equity value less than \$50 million should collectively be a small component of a balanced portfolio, with smaller individual investment sizes than otherwise. Investors are responsible for their own investment decisions, unless a contract stipulates otherwise. Deep Data Analytics does not stand behind the capital value or performance of any investment. Subject to any terms implied by law and which cannot be excluded, Deep Data Analytics shall not be liable for any errors, omissions, defects or misrepresentations in the information (including by reasons of negligence, negligent misstatement or otherwise) or for any loss or damage (whether direct or indirect) suffered by persons who use or rely on the information. If any law prohibits the exclusion of such liability, Deep Data Analytics limits its liability to the re-supply of the Information, provided that such limitation is permitted by law and is fair and reasonable.

Copyright © Deep Data Analytics. All rights reserved. This material is proprietary to Deep Data Analytics and may not be disclosed to third parties. Any unauthorized use, duplication or disclosure of this document is prohibited. The content has been approved for distribution by Deep Data Analytics (ABN 67 159 532 213 AFS Representative No. 1282992) which is a corporate approved representative of BR Securities (ABN 92 168 734 530 and holder of AFSL No. 456663). Deep Data Analytics is the business name of ABN 67 159 532 213.