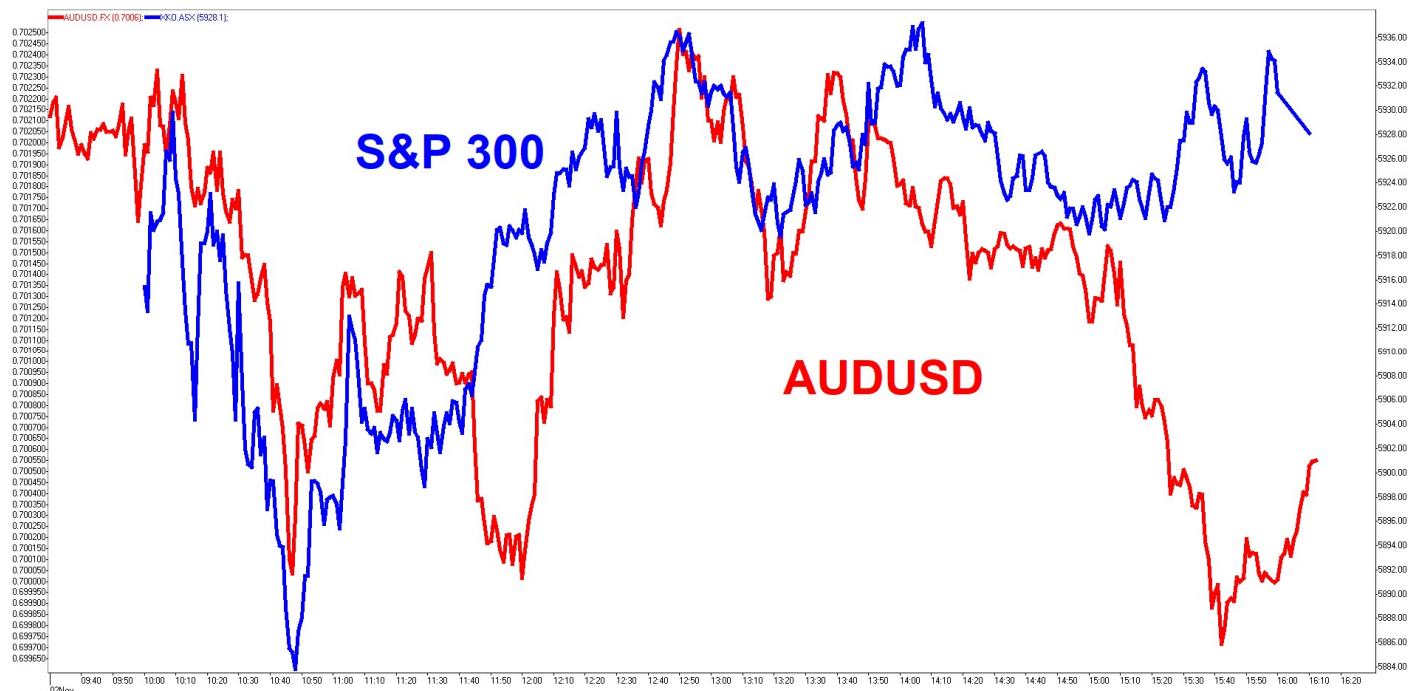


SUNSET STRIP

DEEP DATA ANALYTICS

INVESTMENT MOTTO: "Life is all about cycles. You evolve with the cycles or they run over you."

MARKET SNAPSHOT AND INTRADAY CHART



Security	Last	+/-	%	Security	Last	+/-	%	Security	Last	+/-	%
S&P 300	5928.10	19.50	0.33	DXY	94.1850	0.1300	0.14	SPTGLD	1880.72	1.98	0.11
S&P 200	5951.30	23.70	0.40	AUDUSD	0.7005	-0.0020	-0.29	TWI	59.50	-0.20	-0.34
All Ords	6147.40	14.20	0.23	NZDAUD	0.9419	0.0009	0.09	WTIS	34.43	-1.36	-3.80
Small Ords	2721.50	-14.90	-0.54	GBPAUD	1.8425	0.0030	0.17	BRENT	36.69	-1.25	-3.29
Micro Cap	1634.80	-32.20	-1.93	EURAUD	1.6606	0.0024	0.14	COPP3M	6706.00	-2.00	-0.03
NZ50G	12070.83	-13.64	-0.11	EURUSD	1.1633	-0.0017	-0.15	NICK3M	15289.00	-146.00	-0.95
JAPAN	23308.38	331.25	1.44	USDJPY	104.7330	0.1885	0.18	ZINC	2524.50	21.50	0.86
KOSPI	2294.28	27.13	1.20	CNYUSD	0.1495	0.0001	0.07	Security	Last	+/-	%
SING	2439.82	15.98	0.66	Security	Last	+/-	%	DOWFUT	26417.00	23.00	0.09
SHANGHAI	3222.91	-1.63	-0.05	USBON	0.8637	-0.0135	-1.53	NASFUT	11057.50	11.25	0.10
HNGKNG	24318.40	210.98	0.88	USLBR	1.6498	-0.0132	-0.79	SPFUT	3269.25	4.50	0.14
GERMAN	11556.48	-41.59	-0.36	BOND10	0.8259	-0.0051	-0.61				
CAC40	4594.24	24.57	0.54	BBSR3M	0.0550	0.0000	0.00				
FTSE	5577.27	-4.48	-0.08	VIX	38.02	0.43	1.14				
DOWJON	26501.60	-157.51	-0.59	XVI	24.52	0.38	1.57				
NASDAQ	10911.59	-274.00	-2.45								
SP500	3269.96	-40.15	-1.21								

Sources: AFR, AAP, ASX, Bloomberg, CNBC, CNN, FactSet, Hedgeye, IRESS, Market Watch, Thomson Reuters, S&P, SMH, Trading Economics

MARKET COMMENTARY:

1. Local market had a volatile positive day due to the global investors chasing currency after the positive China manufacturing data. Despite the negative global lead from Friday night, China data drove global investors to buy into Asian markets as pandemic waves and election uncertainties weigh on Europe and US. The main overhang remains the US election while the pandemic waves are gradually pushing the global economies into another phase of lockdown restriction and corporate earnings downgrades. The risk weighted outlook suggests US election is likely to be close in the first few days before one side runs away with it. Given the polarization of US politics, it will be easy to drive up civil unrest during the uncertainty. Similar to what happened in February, markets are starting to accept lockdown restrictions and corporate earnings downgrade. What if there is no vaccine and this restriction cycles are the way forwards in 2021? Investors are overly optimistic on vaccine like global growth!!!

Central Banks will inevitably print more cheap debt in order to hold the ponzi scheme together and make the problem deeper and harder to solve. Fiscal miss management in most parts of the world over a number of years have left structural problems that can only solved by reform but in most cases vested interest groups have turned the problems in ideological argument instead of economic reality. History shows economies do not reform unless recession cycle cleans out the dead wood. The global recession realities are going to remove the dead wood as cost inflation starts to filter through the economies!!! RBA went off the rails in 2016 rate cuts and now they are becoming the problem than the solution. Like what happened in Japan after WW2, RBA is going to dig a bigger and deeper economic hole due to fiscal policy failures!!!

US 10 Year Bond Yield has broken 2 year down trend as inflation starts to rise with election and pandemic cycles!!!

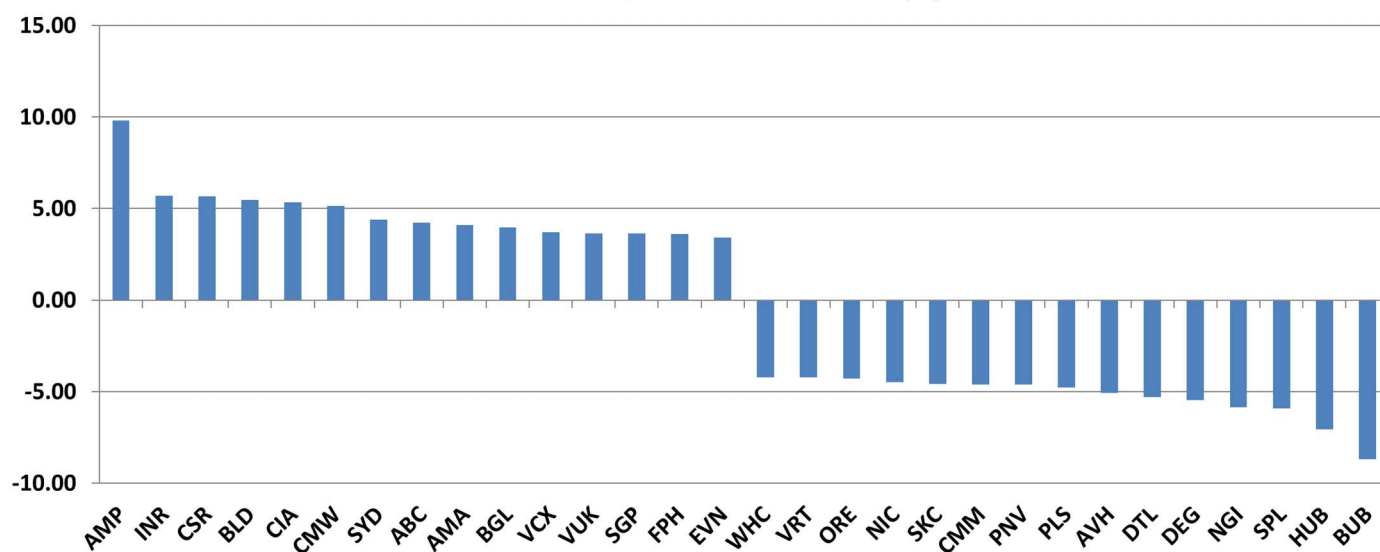


Overnight the US market finished down 150 despite 300 point pump in the last hour for month end window dressing. NASDAQ was the worst hit -2.5% compared to DOW -0.6%, Russell was -1.5% and S&P500 -1.2%. Growth stocks were seeing some pain after big tech results were beats but not in the ballpark for sky high valuations. EU lockdown restrictions are spreading while herd immunity has been proven invalid by Sweden as well the large scale testing proved immunity doesn't last. Even in the US, El Paso is returning to restrictions and it looks inevitable that for more will follow after election politics gets out of the way. Bonds and most commodities are lower while Gold and US\$ higher. Bond yields are pushing higher...US 30 year bond yield is 1.66%...breaking out higher with inflation outlook!!! Month end window dressing is likely to unwind as election and pandemic uncertainty rises further.

Remain nimble, contrarian and cautiously pragmatic with elevated global macro risks!!! Buckle up...it's going to get bumpy!!!

2. Movers and Shakers in S&P 300 >

S&P 300 Best/Worst 15 Performers (%)



3. CNN Fear & Greed Index >



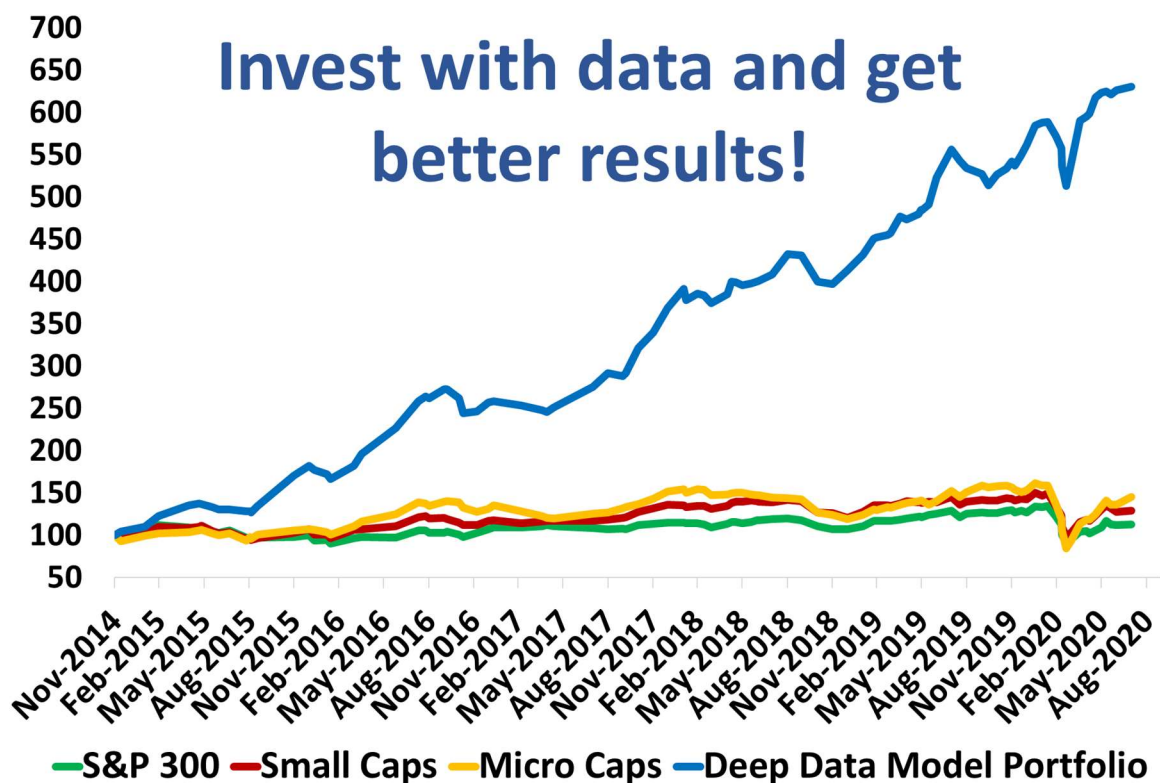
4. **Abacus Property Group (ABP +2.89%)** > Abacus Property Group (“Abacus”) (ASX:ABP) is pleased to announce that it has an unconditional agreement to acquire the remaining 75% interest in the Self Storage operating platform, Storage King. Self Storage is a key sector for Abacus having made its first investment in 2005 and since then actively accumulating a portfolio of 81 locations, with a valuation of over \$1 billion as at 30 June 2020, all exclusively managed by Storage King. **ASX**
5. **Atlas Arteria (ALX -0.35%)** > Atlas Arteria (ASX: ALX) today announces the retirement of Dr Nora Scheinkestel as Non-Executive Director and Chairman of Atlas Arteria Limited (ATLAX) and as a Non-Executive Director of Atlas Arteria International Limited (ATLIX) effective 1 November, 2020. Her retirement is part of Atlas Arteria’s board succession planning process and Ms Debbie Goodin, a member of the ATLAX Board since 2017, will become Chairman of ATLAX. Ms Goodin will also become a director of ATLIX. **ASX**
6. **AMP (AMP +9.80%)** > Further to AMP’s announcement on 30 October in relation to the indicative, non-binding, conditional proposal from Ares Management Corporation, AMP attaches the Form 8-K Current Report which has since been filed by Ares with the US Securities and Exchange Commission. Ares’ proposal is at an implied value of A\$1.85 per AMP share. AMP emphasises the preliminary nature of the proposal and discussions between itself and Ares, and that there is no guarantee that a transaction will eventuate and no certainty with regards to price. **ASX**
7. **Austal Limited (ASB -1.85%)** > Austal Limited (Austal) (ASX: ASB) is pleased to announce Austal Australia has delivered the eighth Guardian-class Patrol Boat (GCPB) to the Australian Department of Defence. The vessel, VOEA Ngahau Siliva, was gifted by the Australian Government to the Kingdom of Tonga during a handover ceremony at Austal Australia’s Henderson shipyard on Friday 30 October; attended by Her Royal Highness, Princess Angelika Latufipeka Tuku’aho of the Kingdom of Tonga; the Australian Minister for Defence Industry, the Hon. Melissa Price MP, and, RAN Head of Maritime Systems, Capability Acquisition and Sustainment Group RADM Wendy Malcolm. **ASX**
8. **CSR (CSR +5.67%)** > Commenting on the result, CSR Managing Director & CEO Julie Coates said, “While it has been a challenging half on many fronts, we are very pleased with the performance of Building Products. The increasing diversification of our business across segments and markets, coupled with strong cost control and operational efficiency enabled us to maintain our Building Products EBIT in a contracting market. “We have also made good progress across a number of key strategic initiatives. We secured the next phase of development at Horsley Park, with our property development pipeline set to unlock significant earnings over the coming years. We have reorganised the business to drive a stronger customer solutions focus, started our supply chain transformation and continued to optimise our footprint. “We are building CSR into a more diversified, streamlined business to increase resilience as well as growth potential.” **ASX**
9. **Cedar Woods Properties (CWP -2.61%)** > Cedar Woods Properties Limited (ASX: CWP) (‘Cedar Woods’ or ‘the Company’) provides the following operational update. The Company has enjoyed a strong first quarter of settlements and has also experienced good sales across the portfolio. Pre-sales are at \$454 million (including lots settled in the three months to 30 September 2020), which is up 11 per cent on the \$409 million reported at the same time last year. Approximately 60 per cent of pre-sales are expected to settle in FY21 with the balance contributing to earnings in FY22 and FY23. **ASX**
10. **Dexus (DXS +2.21%)** > Dexus today announced that it has conditionally exchanged contracts to sell 60 Miller Street, North Sydney. The sale will realise net proceeds of \$273 million¹, representing a circa 3% premium to the property’s book value at 30 June 2020 and supports the solid investment demand for quality office assets. **ASX**

11. **GPT Group (GPT +2.98%)** > The GPT Group ("GPT" or "Group") today announced plans to divest its 25 per cent interest in 1 Farrer Place, Sydney. In announcing the planned sale of the asset, GPT's Chief Executive Officer Bob Johnston said: "Farrer Place is one of Australia's most iconic office assets attracting high quality tenants. It is rare for opportunities of this quality to be offered to the market and we expect it will be well sought after by both domestic and off-shore investors." The execution of the sale is subject to pre-emptive first right arrangements with co-owners. **ASX**
12. **Lovisa (LOV -3.20%)** > As a result of announcements by the UK and French governments of further lockdowns in response to the increasing COVID-19 cases in both countries, our European stores will be subject to temporary closures: • All 24 Lovisa stores in France have temporarily closed effective from 30th October 2020 until these restrictions are lifted and stores are permitted to re-open. Based on current government guidance these restrictions are expected to remain in place until at least 1st December 2020. • The UK government has announced its intention to enter a new lockdown phase from midnight on 5th November 2020 until at least 2nd December 2020. As a result, 40 of our stores in the UK will also be temporarily closed for this period, with 2 stores in Scotland remaining open at the current time. **ASX**
13. **MACA (MLD -3.03%)** > Red 5 Limited (ASX: RED) is pleased to advise that it has taken another key step towards the development of its 2.4Moz, 16-year Life-Of-Mine King of the Hills Project (KOTH) in Western Australia, after issuing a Notice of Award for the Engineering, Procurement and Construction contract (EPC Contract) and the bulk earthworks for the Process Plant to multi-disciplined mineral processing provider MACA Interquip (ASX: MLD). The EPC contract and bulk earthworks – which encompass the KOTH processing facility, equipping of the bore fields, high voltage power distribution, workshop, warehouse and bulk earthworks – will be undertaken as a fixed-price contract. **ASX**
14. **PolyNovo (PNV -4.62%)** > PolyNovo is excited to announce the appointment of Biogenesys as it's distributor in Greece. Biogenesys has an established network servicing leading hospitals and surgeons. Greece has a population circa 10.7million people with a well-developed health system. **ASX**
15. **SEEK (SEK -0.84%)** > SEEK Limited ("SEEK") is aware of a recent report by Blue Orca Capital ("the Report"). The Report contains many inaccurate statements and makes allegations of a very serious nature that are unsubstantiated. We believe the goal of the Report is to use speculative assertions to generate adverse publicity and then draw SEEK into a public debate, which is consistent with the usual practice of short-seller firms. The fullness of SEEK's market disclosures ensures that market participants have a great deal of information against which to assess the merit, or lack thereof, of claims such as those in the Report. SEEK is in compliance with its continuous disclosure obligations and we remain confident in SEEK's long-term outlook. We do not wish to engage in detail with the self-serving and unsubstantiated claims in the Report and will therefore only focus on addressing the Report's two main assertions. **ASX**
16. **Westpac Bank (WBC -0.61%)** > Westpac has had a 62 per cent dive in full-year cash earnings, largely from the effects of COVID-19 and its \$1.3 billion penalty for breaches of money laundering and terror financing laws. The bank on Monday reported cash earnings of \$2.6 billion for the 12 months to September 30. Chief executive Peter King said 2020 had been a particularly challenging year and the result was disappointing. **ASX**

Deep Data Analytics

Deep Data Analytics is the brainchild of Mathan Somasundaram, a 25-year veteran of the finance and technology sectors. In an increasingly volatile and uncertain economic and political landscape, Mathan saw the need for a dynamic data-driven investment strategy that can be used to optimise the risk-adjusted returns for investors. Seamlessly combining top-down and bottom-up approaches, the vertically integrated, multi-tiered model has been carefully calibrated over the years to rapidly adapt to evolving macro conditions and thereby ensure an effective and dynamic trade-off between risk and return.

Deep Data Analytics has been used as the focal point of strategy in macro marketing documents to Institutional and High Net Worth clients for over a decade. With successive years of consistent and reliable returns despite major disruptive thematic cycles, Deep Data Analytics is widely recognised as one of the leading integrated investment strategies in the market. And now, with the inclusion of a variety of risk/return investment options and insights, breadth of users from institutional to retail investors have access to cutting-edge analytics at their fingertips.



For more information visit... www.deepdataanalytics.com.au

Or email... info@deepdataanalytics.com.au

US market overnight - Reuters

Major U.S. stock indexes tumbled on Friday, dragged by losses in tech heavyweights that had been priced for perfection, and a record rise in coronavirus cases fed the glum mood along with presidential election jitters.

The three main indexes headed toward their worst week since the market's lows in March on prospects of wider COVID-19 restrictions in Europe, while surging U.S. cases pushed hospitals to the brink of capacity.

The CBOE volatility index held at a 20-week high, a sign of jitters ahead of the final weekend before Election Day on Tuesday.

"We're two market days away from Election Day and people want to make sure that they're not completely caught off guard," said Pete Santoro, a Boston-based equity portfolio manager at Columbia Threadneedle.

The S&P 500 has fallen about 9.4% since hitting an all-time high in early September in a rally driven by the tech mega caps whose quarterly results this week failed to meet optimistic expectations.

Apple Inc tumbled about 6.1% after it posted the steepest drop in quarterly iPhone sales in two years due to the late launch of new 5G phones.

Amazon.com Inc fell 5.48% after it forecast a jump in costs related to COVID-19, while Facebook Inc shed 7.04% as it warned of a tougher 2021.

"All these names are eventually going to be repriced, they're all ridiculously valued. It's just that I don't know when and I don't know from what stratospheric valuation they inevitably reprice," said David Bahnsen, chief investment officer at The Bahnsen Group in Newport Beach, California.

Communication services got a boost from a 3.6% jump in shares of Alphabet Inc after the Google parent beat estimates for quarterly sales as businesses resumed advertising.

Google may have benefited as it has been trading at about 36 times earnings, far less than the 119 times earnings valuation of Amazon, Bahnsen said.

"There is a big selloff in those big tech names because they didn't live up to the hype and people are really worried about next week's election," said Kim Forrest, chief investment officer at Bokeh Capital Partners in Pittsburgh.

Republican President Donald Trump has consistently trailed Democratic challenger Biden in national polls for months, but polls have shown a closer race in the most competitive states that could decide the election.

At 2:31 p.m. ET (1831 GMT), the Dow Jones Industrial Average fell 432.05 points, or 1.62%, to 26,227.06. The S&P 500 lost 67.47 points, or 2.04%, to 3,242.64 and the Nasdaq Composite dropped 337.07 points, or 3.01%, to 10,848.53.

The third-quarter earnings season is almost past its halfway mark, with about 86.2% of S&P 500 companies topping earnings estimates, according to Refinitiv data. Overall, profit is expected to fall 10.3% from a year earlier.

Twitter Inc slumped about 21.1% after the micro-blogging site added fewer users than expected and warned the U.S. election could affect ad revenue.

Declining issues outnumbered advancing ones on the NYSE by a 2.60-to-1 ratio; on Nasdaq, a 3.07-to-1 ratio favored decliners.

The S&P 500 posted three new 52-week highs and one new low; the Nasdaq Composite recorded 18 new highs and 71 new lows.

US Movers and Shakers - CNBC

MARKET MOVERS

S&P NASDAQ DOW EUR ASIA COVID19

TOP

MHK	Mohawk Industr...	10.897%	<div></div>
RMD	Resmed Inc	6.924%	<div></div>
DVN	Devon Energy ...	5.681%	<div></div>
TAP	Molson Coors B...	5.632%	<div></div>
CCL	Carnival Corp	5.624%	<div></div>

BOTTOM

TWTR	Twitter Inc	21.114%	<div></div>
ETSY	ETSY Inc	8.179%	<div></div>
ADM	Archer-Daniels-...	7.372%	<div></div>
ILMN	Illumina Inc	7.05%	<div></div>
WU	Western Union ...	6.986%	<div></div>

MARKET MOVERS

S&P NASDAQ DOW EUR ASIA COVID19

TOP

CHTR	Charter Commu...	4.83%	<div></div>
GOOGL	Alphabet Class A	3.804%	<div></div>
FOXA	Fox Corp. Class...	3.715%	<div></div>
GOOG	Alphabet Class C	3.431%	<div></div>
FOX	Fox Corp. Class B	2.954%	<div></div>

BOTTOM

ILMN	Illumina Inc	7.05%	<div></div>
MELI	Mercadolibre Inc	6.682%	<div></div>
FB	Facebook	6.31%	<div></div>
ZM	Zoom Video Co...	5.875%	<div></div>
NFLX	Netflix Inc	5.647%	<div></div>

MARKET MOVERS

S&P NASDAQ DOW EUR ASIA COVID19

TOP

IBM	International B...	2.525%	<div></div>
WBA	Walgreens Boot...	1.551%	<div></div>
CAT	Caterpillar Inc	1.539%	<div></div>
CVX	Chevron Corp	1.017%	<div></div>
MMM	3M Co	0.934%	<div></div>

BOTTOM

AAPL	Apple Inc	5.602%	<div></div>
BA	Boeing Co	2.63%	<div></div>
NKE	Nike Inc	2.263%	<div></div>
CRM	Salesforce.Com...	2.054%	<div></div>
V	Visa Inc	1.709%	<div></div>

MARKET MOVERS

S&P NASDAQ DOW EUR ASIA COVID19

TOP

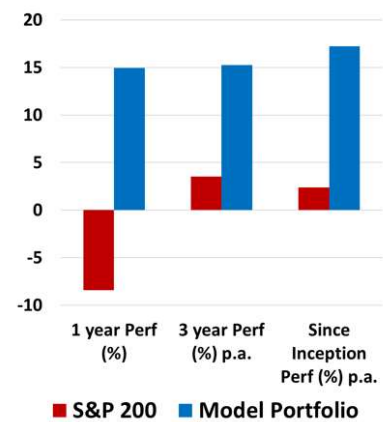
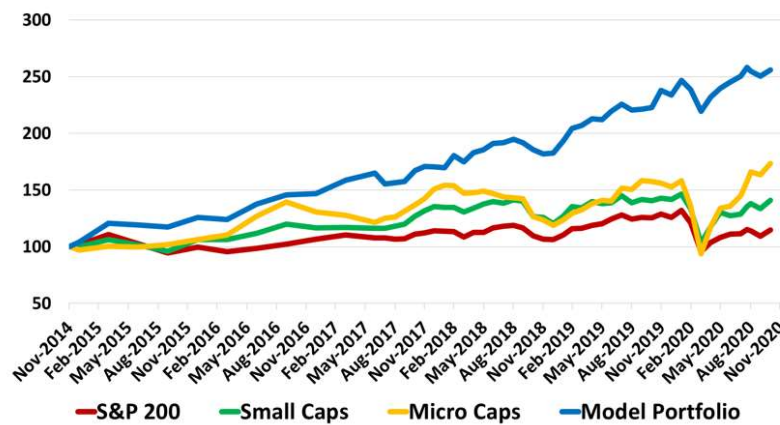
ABBV	Abbvie Inc	5.492%	<div></div>
BIIB	Biogen Inc	2.685%	<div></div>
BNTX	BioNTech SE	0.649%	<div></div>
PFE	Pfizer Inc	0.567%	<div></div>
TMO	Thermo Fisher ...	0.263%	<div></div>

BOTTOM

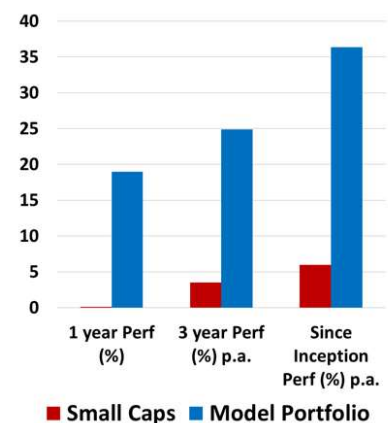
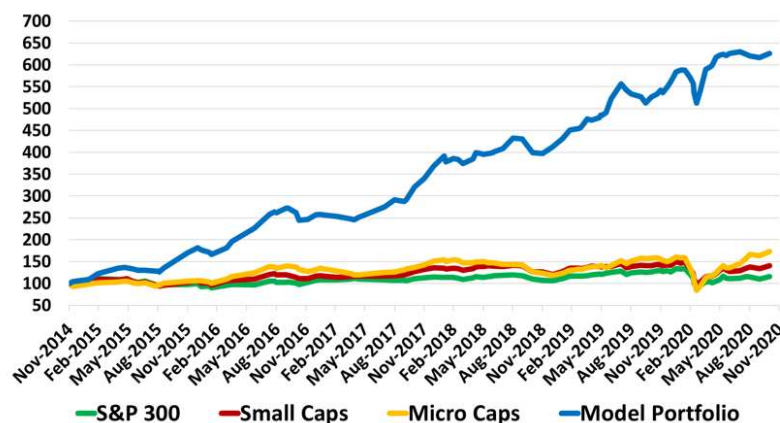
ADPT	Adaptive Biotec...	11.111%	<div></div>
NVAX	Novavax Inc	7.897%	<div></div>
VIR	Vir Biotechnolo...	7.065%	<div></div>
INO	Inovio Pharmac...	6.101%	<div></div>
MRNA	Moderna Inc	5.345%	<div></div>

Deep Data Analytics

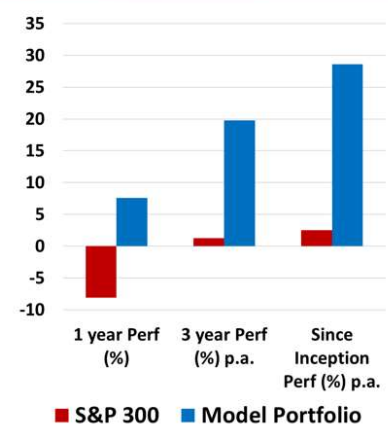
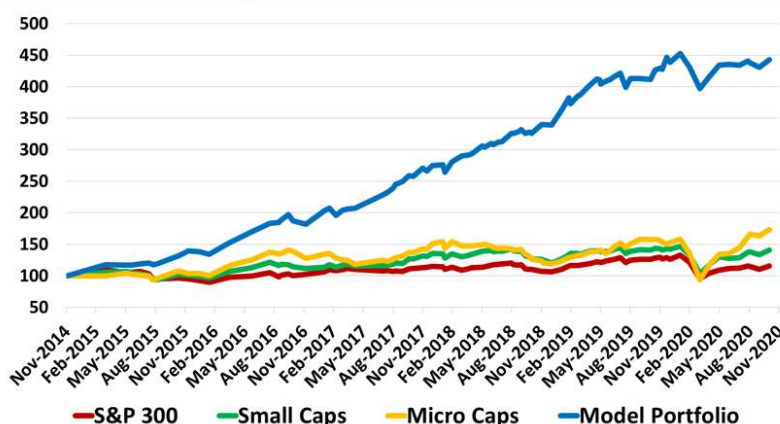
S&P 100 Best 10 with Cash



Small Cap Best 10 with Cash



GARY Best 10 with Cash



For more information visit... www.deepdataanalytics.com.au

Or email... info@deepdataanalytics.com.au

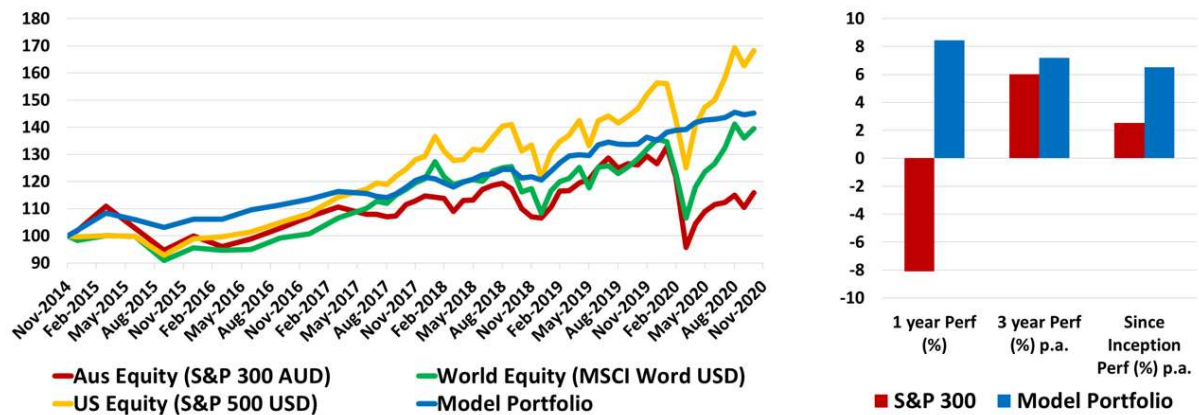
TODAY'S TOP 30 WINNERS AND LOSERS IN S&P 300

Code	Company Name	Market Cap (\$m)	Price (\$)	Daily Price Change (%)	Consensus Target Price (\$)	Consensus Rating	2020 PE	2021 PE	2020 EPS GROWTH	2021 EPS GROWTH	2020 Div Yield	2021 Div Yield	Newsflash
AMP	AMP Limited	5258.00	1.68	9.80	1.45	HOLD	17.87	16.10	-46.31	10.99	6.08	3.32	AMP provides further update on portfolio review
INR	Ioneer Ltd	294.38	0.19	5.71	0.50	-	-0.59	-0.25	N/A	-131.33	N/A	0.00	N/A
CSR	CSR Limited	2140.54	4.66	5.67	4.65	HOLD	19.83	16.70	-35.95	18.72	4.27	3.21	Half Yearly Report and Accounts
BLD	Boral Limited	5588.98	4.81	5.48	4.60	HOLD	28.44	28.82	-57.97	-1.30	2.08	0.76	N/A
CIA	Champion Iron Ltd	1589.76	3.54	5.36	3.95	BUY	10.96	5.20	-16.87	110.83	0.00	0.00	N/A
CMW	Cromwell Prop	2290.29	0.92	5.14	1.01	HOLD	11.85	13.19	0.96	-10.13	8.56	8.56	N/A
SYD	SYD Airport	14707.92	5.69	4.40	6.14	HOLD	-62.38	919.22	-154.87	106.79	0.00	2.08	N/A
ABC	Adbri Limited	1845.91	2.95	4.24	2.45	HOLD	19.12	19.91	-17.53	-3.99	3.24	3.16	N/A
AMA	AMA Group Limited	535.75	0.76	4.11	0.80	BUY	108.57	36.54	-87.15	197.14	0.11	0.00	N/A
BGL	Bellevue Gold Ltd	953.28	1.18	3.96	1.48	STRONG BUY	-81.38	-147.50	-31.82	44.83	0.00	0.00	N/A
VCK	Vicinity Centres	5508.25	1.26	3.72	1.38	HOLD	8.60	15.30	-18.15	-43.80	6.43	6.39	N/A
VUK	Virgin Money Uk PLC	1568.57	1.70	3.66	1.80	HOLD	15.43	9.19	-76.82	67.90	0.00	0.86	N/A
SGP	Stockland	9190.26	3.99	3.64	4.11	HOLD	12.38	12.88	-9.98	-3.87	6.10	6.08	N/A
FPH	Fisher & Paykel H.	18893.69	33.98	3.63	36.00	BUY	75.45	55.54	30.39	35.85	0.81	0.99	N/A
EVN	Evolution Mining Ltd	9465.72	5.73	3.43	5.50	HOLD	25.98	19.41	67.27	33.84	2.15	2.57	Change in substantial holding for TBR
DRR	Deterra Royalties	2076.86	4.06	3.31	-	-	N/A	N/A	N/A	N/A	N/A	N/A	ILU: Iluka - Demerger Implemented
LLC	Lendlease Group	8231.68	12.35	3.26	14.00	BUY	86.90	18.56	-82.17	368.14	2.64	2.49	N/A
AHY	Asaleo Care Limited	515.97	0.98	3.16	1.24	BUY	13.96	13.32	27.17	4.84	2.35	4.98	N/A
GPT	GPT Group	7850.16	4.15	2.98	4.35	BUY	16.06	13.58	-19.83	18.27	4.66	5.70	Planned Sale of GPTs 25% interest in 1 Farrer Place Sydney
PAR	Paradigm Bio.	609.81	2.78	2.96	2.54	HOLD	-36.82	-19.04	-98.68	-93.38	0.00	0.00	N/A
ABP	Abacus Property Grp.	1844.00	2.85	2.89	2.90	BUY	15.27	15.73	-33.95	-2.89	6.41	6.18	Abacus acquires balance of Storage King operating platform
QAN	Qantas Airways	7902.53	4.31	2.86	4.93	BUY	-84.10	-10.31	-108.78	-715.96	1.05	0.00	N/A
APA	APA Group	12377.09	10.77	2.67	11.24	HOLD	40.73	41.20	2.37	-1.13	4.64	4.67	N/A
NEC	Nine Entertainment	3547.22	2.13	2.40	2.10	BUY	24.33	23.81	-36.02	2.15	3.28	3.01	N/A
ANZ	ANZ Banking Grp Ltd	53427.36	19.26	2.39	21.02	BUY	14.82	12.08	-41.87	22.73	2.97	4.70	N/A
SCG	Scentre Grp	10899.79	2.15	2.38	2.35	HOLD	14.41	11.26	-40.36	28.00	4.04	7.14	N/A
SSR	SSR Mining Inc.	416.59	26.30	2.33	-	-	N/A	N/A	N/A	N/A	N/A	N/A	N/A
IEL	Idp Education Ltd	5366.32	19.73	2.33	21.00	BUY	112.17	106.43	-34.68	5.40	1.00	0.56	Change in substantial holding
GEM	G8 Education Limited	941.28	1.15	2.22	1.38	BUY	13.65	21.08	-41.52	-35.22	0.00	3.12	Change in substantial holding
DXS	Dexus	9395.25	8.80	2.21	9.74	HOLD	14.22	14.11	1.18	0.80	5.61	5.68	Sale of 60 Miller Street North Sydney

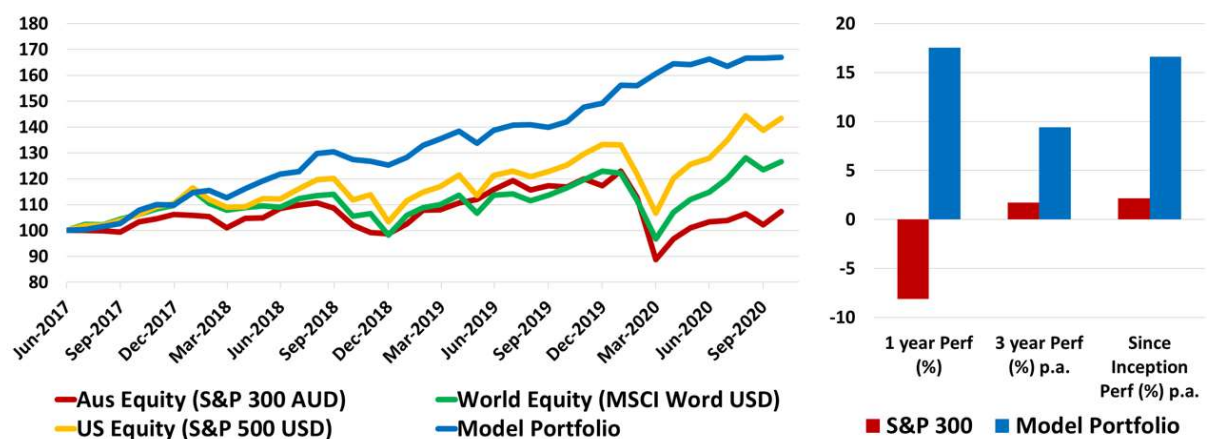
Code	Company Name	Market Cap (\$m)	Price (\$)	Daily Price Change (%)	Consensus Target Price (\$)	Consensus Rating	2020 PE	2021 PE	2020 EPS GROWTH	2021 EPS GROWTH	2020 Div Yield	2021 Div Yield	Newsflash
BUB	Bubs Aust Ltd	422.82	0.63	-8.70	0.78	SELL	-52.50	-157.50	N/A	66.67	0.00	0.00	N/A
HUB	HUB24 Ltd	1450.43	21.35	-7.05	22.00	BUY	99.36	72.93	38.51	36.24	0.37	0.56	N/A
SPL	Starpharma Holdings	577.95	1.35	-5.92	2.03	STRONG BUY	-37.50	-55.10	-9.09	31.94	0.00	0.00	N/A
NGI	Navigator Global Ltd	249.71	1.45	-5.84	2.24	STRONG BUY	6.03	9.84	-14.29	-38.73	14.86	9.45	N/A
DEG	De Grey Mining	1406.26	1.04	-5.45	1.06	STRONG BUY	N/A	N/A	N/A	N/A	0.00	0.00	N/A
DTL	Data#3 Limited	959.26	5.90	-5.30	4.20	HOLD	38.69	33.33	27.08	16.07	2.36	2.71	N/A
AVH	Avita Therapeutics	453.61	5.63	-5.06	13.00	BUY	-12.70	-8.19	-23.15	-55.05	0.00	0.00	N/A
PLS	Pilbara Min Ltd	935.39	0.40	-4.76	0.36	HOLD	-12.50	-34.78	-93.94	64.06	0.00	0.00	N/A
PNV	Polynovo Limited	1718.83	2.48	-4.62	2.45	BUY	-594.72	496.00	10.71	219.90	0.00	0.00	PolyNovo enters Greece - Distributor Appointment
CMM	Capricorn Metals	596.80	1.66	-4.61	1.70	HOLD	-76.98	53.39	N/A	244.19	0.00	0.00	N/A
SKC	Skycity Ent Grp Ltd	1991.74	2.50	-4.58	3.52	STRONG BUY	34.49	29.14	-68.66	18.37	3.71	1.93	N/A
NIC	Nickel Mines Limited	1904.65	0.86	-4.47	1.33	BUY	11.87	8.40	N/A	41.30	2.63	4.66	N/A
ORE	Orocobre Limited	880.75	2.45	-4.30	2.85	HOLD	-20.85	-27.24	-150.33	23.47	0.00	0.00	N/A
VRT	Virtus Health Ltd	360.95	4.30	-4.23	4.00	BUY	16.95	16.85	-27.98	0.59	3.02	3.57	N/A
WHC	Whitehaven Coal	1099.77	1.02	-4.23	1.86	BUY	37.05	-14.75	-94.87	-351.25	1.44	0.00	N/A
EHE	Estia Health Ltd	347.52	1.28	-4.14	1.57	HOLD	12.40	18.80	-36.70	-34.02	6.38	4.54	N/A
ALG	Ardentleisuregrpltd	311.81	0.63	-3.85	0.70	BUY	-5.94	-4.58	-406.01	-29.69	0.00	0.00	N/A
CCX	City Chic Collective	601.38	2.53	-3.80	3.70	BUY	31.72	27.88	-2.15	13.79	0.00	0.74	N/A
EVT	Event Hospitality	1329.86	7.95	-3.64	9.30	BUY	47.18	-68.73	-75.79	-168.65	2.64	1.91	N/A
HSN	Hansen Technologies	783.28	3.80	-3.55	4.20	BUY	19.10	15.47	17.06	23.45	1.62	2.64	N/A
CCP	Credit Corp Group	1233.22	17.67	-3.55	22.03	BUY	13.20	17.28	-5.22	-23.62	3.01	2.90	N/A
TPW	Temple & Webster Ltd	1256.32	10.06	-3.55	12.60	BUY	143.71	52.29	577.64	174.86	0.00	0.00	N/A
CUV	Clinuvel Pharmaceut.	1020.82	19.93	-3.53	28.89	STRONG BUY	N/A	76.21	N/A	N/A	N/A	0.09	N/A
SKY	Senex Energy Limited	430.70	0.29	-3.39	0.43	BUY	47.50	20.53	7.91	131.33	0.00	0.00	N/A
PRN	Perenti Global Ltd	733.58	1.01	-3.35	1.68	BUY	6.55	6.34	-2.71	3.37	6.49	6.81	N/A
EHL	Emeco Holdings	413.48	0.74	-3.29	1.19	BUY	3.62	5.58	10.52	-35.17	0.00	0.00	N/A
TYR	Tyro Payments	1848.69	3.58	-3.24	4.00	HOLD	-75.10	-104.53	N/A	28.15	0.00	0.00	COVID-19 Trading Update 33 - Week Ended 30 October 2020
AMI	Aurelia Metals Ltd	406.40	0.45	-3.23	0.79	STRONG BUY	9.25	6.19	-9.87	49.31	1.11	3.56	N/A
IAP	Investec Aust Prop	758.01	1.20	-3.23	1.70	-	13.79	12.37	N/A	11.49	7.46	7.46	N/A
LOV	Lovisa Holdings Ltd	805.95	7.26	-3.20	8.46	HOLD	17.76	35.74	18.57	-50.32	0.59	1.45	European Store Update November 2020

Deep Data Analytics

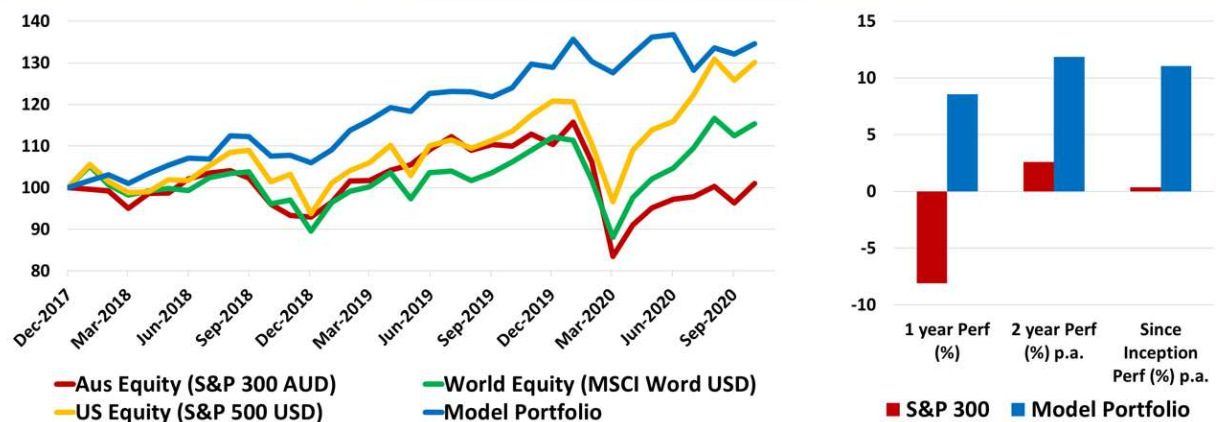
Multi Asset ETF Model



Global Tech/Health ETF Model



ESG ETF Model



For more information visit... www.deepdataanalytics.com.au

Or email... info@deepdataanalytics.com.au

CHECKING S&P 300 BY THE SECTOR

➤ Energy stocks:

Code	Company Name	Market Cap (\$m)	Price (\$)	Daily Price Change (%)	Consensus Target Price (\$)	Consensus Rating	2020 PE	2021 PE	2020 EPS GROWTH	2021 EPS GROWTH	2020 Div Yield	2021 Div Yield	Newsflash
ALD	Ampol Limited	6477.40	25.36	-2.24	26.73	HOLD	32.23	17.51	-39.99	84.10	1.71	3.33	N/A
BPT	Beach Energy Limited	2691.97	1.15	-2.54	1.80	BUY	5.91	7.58	-21.78	-21.96	1.68	1.71	CUE: Ironbark-1 Drilling Commences
COE	Cooper Energy Ltd	512.39	0.32	0.00	0.49	BUY	-84.91	113.31	-192.75	174.93	0.00	0.00	N/A
CVN	Camarvon Petroleum	359.92	0.23	-2.17	0.36	BUY	-75.00	-52.94	52.61	-41.67	0.00	0.00	N/A
FAR	FAR Ltd	109.77	0.01	0.00	0.03	BUY	-16.42	-11.00	33.00	-49.25	0.00	0.00	N/A
KAR	Karoon Energy Ltd	428.94	0.76	-2.58	1.38	BUY	-5.22	-55.93	-32.62	90.66	0.00	0.00	N/A
NHC	New Hope Corporation	890.62	1.06	-1.40	1.40	HOLD	6.54	134.74	-63.03	-95.15	7.84	1.01	N/A
ORG	Origin Energy	7044.84	4.01	0.25	6.19	BUY	6.85	17.62	0.31	-61.11	7.00	5.16	N/A
OSH	Oil Search Ltd	5340.08	2.54	-1.17	3.65	BUY	146.69	21.50	-94.57	582.22	0.08	1.41	N/A
SOL	Soul Pattinson (W.H)	6066.28	25.46	0.47	24.16	BUY	29.49	34.64	-42.83	-14.86	2.21	2.28	N/A
STO	Santos Ltd	9852.90	4.65	-1.69	6.30	BUY	22.45	13.93	-61.07	61.21	1.44	1.79	N/A
SKY	Senex Energy Limited	430.70	0.29	-3.39	0.43	BUY	47.50	20.53	7.91	131.33	0.00	0.00	N/A
VEA	Viva Energy Group	2737.94	1.70	0.59	2.44	BUY	-166.83	19.17	-111.62	970.47	3.78	3.88	N/A
WHC	Whitehaven Coal	1099.77	1.02	-4.23	1.86	BUY	37.05	-14.75	-94.87	-351.25	1.44	0.00	N/A
WOR	Worley Limited	4912.69	9.16	-2.66	11.70	BUY	12.24	13.46	25.61	-9.02	4.14	4.80	N/A
WPL	Woodside Petroleum	16858.20	17.41	-0.63	23.95	BUY	24.89	17.99	-59.79	38.35	3.24	4.37	N/A

➤ Material (Ex Mining) stocks:

Code	Company Name	Market Cap (\$m)	Price (\$)	Daily Price Change (%)	Consensus Target Price (\$)	Consensus Rating	2020 PE	2021 PE	2020 EPS GROWTH	2021 EPS GROWTH	2020 Div Yield	2021 Div Yield	Newsflash
ABC	Adbri Limited	1845.91	2.95	4.24	2.45	HOLD	19.12	19.91	-17.53	-3.99	3.24	3.16	N/A
AMC	Amcor PLC	13241.29	15.00	1.28	16.60	BUY	16.33	15.11	2.04	8.05	4.78	4.59	N/A
BKW	Brickworks Limited	2599.28	17.63	1.85	20.20	BUY	16.45	26.96	-35.27	-38.99	3.29	3.39	N/A
BLD	Boral Limited	5588.98	4.81	5.48	4.60	HOLD	28.44	28.82	-57.97	-1.30	2.08	0.76	N/A
CSR	CSR Limited	2140.54	4.66	5.67	4.65	HOLD	19.83	16.70	-35.95	18.72	4.27	3.21	Half Yearly Report and Accounts
FBU	Fletcher Building	3189.87	3.95	2.07	4.11	BUY	64.63	18.56	-85.07	248.22	0.69	2.74	N/A
IPL	Inditec Pivot	3729.07	1.95	1.30	2.40	BUY	17.12	14.22	30.96	20.40	1.55	3.34	N/A
JHX	James Hardie Indust	15351.34	35.20	1.79	40.25	BUY	29.19	26.42	21.15	10.46	0.78	0.00	N/A
NUF	Nufarm Limited	1306.15	3.40	-1.16	4.80	BUY	-38.46	31.53	-137.02	221.98	0.20	0.85	N/A
ORA	Orora Limited	2472.76	2.58	0.00	2.69	HOLD	15.49	16.69	-26.79	-7.21	23.67	4.51	Daily share buy-back notice - Appendix 3E
ORI	Orica Limited	6193.71	15.06	-1.31	19.00	BUY	18.52	16.17	-14.86	14.51	2.56	3.39	N/A
PGH	Pact Group Hldgs Ltd	808.38	2.30	-2.13	2.78	HOLD	12.34	11.21	-16.68	10.07	0.00	3.15	N/A

➤ Gold stocks:

Code	Company Name	Market Cap (\$m)	Price (\$)	Daily Price Change (%)	Consensus Target Price (\$)	Consensus Rating	2020 PE	2021 PE	2020 EPS GROWTH	2021 EPS GROWTH	2020 Div Yield	2021 Div Yield	Newsflash
ALK	Alkane Resources Ltd	732.33	1.24	0.41	1.05	BUY	49.42	30.88	-37.46	60.06	0.00	0.00	N/A
BGL	Bellvue Gold Ltd	953.28	1.18	3.96	1.48	STRONG BUY	-81.38	-147.50	-31.82	44.83	0.00	0.00	N/A
DCN	Dacian Gold Ltd	197.56	0.36	0.00	0.43	HOLD	-3.70	6.23	-526.22	159.38	0.00	0.00	N/A
DEG	De Grey Mining	1406.26	1.04	-5.45	1.06	STRONG BUY	N/A	N/A	N/A	N/A	0.00	0.00	N/A
EVN	Evolution Mining Ltd	9465.72	5.73	3.43	5.50	HOLD	25.98	19.41	67.27	33.84	2.15	2.57	Change in substantial holding for TBR
GOR	Gold Road Res Ltd	1161.50	1.33	0.38	2.00	BUY	14.23	11.10	11120.48	28.19	0.86	2.36	N/A
NCM	Newcrest Mining	23876.11	29.58	1.16	35.15	HOLD	24.36	14.29	8.49	70.52	0.90	1.27	N/A
NST	Northern Star	11003.29	15.04	1.28	16.23	HOLD	30.02	16.91	72.00	77.58	0.99	1.49	N/A
PRU	Perseus Mining Ltd	1489.26	1.22	0.41	1.65	BUY	22.95	15.76	1376.94	45.57	0.00	0.16	N/A
RED	Red 5 Limited	541.91	0.28	0.00	0.50	BUY	39.29	-68.75	-41.67	-157.14	0.00	0.00	RED: EPC contract awarded for King of the Hills project
RMS	Ramelius Resources	1561.03	1.96	1.30	2.40	BUY	15.35	8.26	206.99	85.77	0.51	1.79	N/A
RRL	Regis Resources	2122.67	4.15	0.00	5.71	HOLD	9.89	7.76	22.23	27.51	4.18	4.32	N/A
RSG	Resolute Mining	883.11	0.80	-0.63	1.45	BUY	10.00	4.60	23.97	117.63	2.06	2.55	N/A
SAR	Saracen Mineral	6247.07	5.63	-0.18	6.20	HOLD	25.54	16.93	82.89	50.91	0.23	1.06	N/A
SBM	St Barbara Limited	1869.20	2.66	0.38	4.05	BUY	11.97	8.32	-19.77	43.93	3.20	2.66	N/A
SLR	Silver Lake Resource	1859.35	2.12	0.47	2.64	BUY	13.90	9.49	207.03	46.49	0.00	0.00	N/A
SSR	SSR Mining Inc.	416.59	26.30	2.33	-	-	N/A	N/A	N/A	N/A	N/A	N/A	N/A
WAF	West African Res Ltd	841.06	0.94	-2.60	1.30	BUY	6.48	2.74	2024.40	136.04	0.00	0.00	N/A
WGX	Westgold Resources.	1083.38	2.57	0.00	3.20	STRONG BUY	26.14	9.19	495.94	184.42	0.00	0.26	N/A

➤ Mining (Ex Gold) stocks:

Code	Company Name	Market Cap (\$m)	Price (\$)	Daily Price Change (%)	Consensus Target Price (\$)	Consensus Rating	2020 PE	2021 PE	2020 EPS GROWTH	2021 EPS GROWTH	2020 Div Yield	2021 Div Yield	Newsflash
AMI	Aurelia Metals Ltd	406.40	0.45	-3.23	0.79	STRONG BUY	9.25	6.19	-9.87	49.31	1.11	3.56	N/A
AWC	Alumina Limited	4163.91	1.43	-0.70	2.00	BUY	18.20	16.61	-54.11	9.62	4.99	5.38	N/A
BHP	BHP Group Limited	99510.86	33.81	0.09	40.00	BUY	13.43	11.11	-10.20	20.91	5.03	6.08	N/A
BSL	BlueScope Steel Ltd	7385.45	14.62	-0.27	16.43	BUY	20.91	16.61	-60.76	25.85	0.83	1.10	N/A
CIA	Champion Iron Ltd	1589.76	3.54	5.36	3.95	BUY	10.96	5.20	-16.87	110.83	0.00	0.00	N/A
CMM	Capricorn Metals	596.80	1.66	-4.61	1.70	HOLD	-76.98	53.39	N/A	244.19	0.00	0.00	N/A
DRR	Deterra Royalties	2076.86	4.06	3.31	-	-	N/A	N/A	N/A	N/A	N/A	N/A	ILU: Iluka - Demerger Implemented
FMG	Fortescue Metals Grp	53481.62	17.21	-0.92	16.25	HOLD	8.02	6.77	54.22	18.45	9.74	10.54	N/A
GXY	Galaxy Resources	571.22	1.38	-1.43	1.25	HOLD	-24.66	-39.36	32.57	37.36	0.00	0.00	N/A
IGO	IGO Limited	2623.14	4.45	0.23	5.30	HOLD	16.62	19.79	99.92	-16.01	2.38	2.50	N/A
ILU	Iluka Resources	2177.26	5.08	-1.36	7.40	HOLD	12.05	8.88	-37.15	35.76	0.51	4.90	ILU: Iluka - Demerger Implemented
IMD	Imdex Limited	477.73	1.19	-1.66	1.60	BUY	19.48	26.14	-16.29	-25.48	2.62	1.50	N/A
INR	Ioneer Ltd	294.38	0.19	5.71	0.50	-	-0.59	-0.25	N/A	-131.33	N/A	0.00	N/A
JMS	Jupiter Mines.	558.31	0.29	1.75	0.40	BUY	5.80	18.13	N/A	-68.00	21.55	7.36	N/A
LYC	Lynas Corporation	2550.05	2.84	0.35	3.35	BUY	-436.25	53.58	-113.75	914.13	0.00	0.00	N/A
MAH	Macmahon Holdings	517.20	0.25	2.08	0.37	STRONG BUY	8.75	7.78	-91.04	12.50	2.04	2.99	N/A
MGX	Mount Gibson Iron	806.42	0.66	-2.94	0.97	STRONG BUY	7.21	6.44	15.82	12.02	4.55	5.30	N/A
MIN	Mineral Resources.	4707.39	24.33	-2.52	26.00	HOLD	12.89	7.77	95.65	65.94	3.25	5.40	N/A
MID	MACA Limited	221.11	0.80	-3.03	1.31	STRONG BUY	7.21	5.87	48.00	22.82	5.94	6.25	RED: EPC contract awarded for King of the Hills project
NIC	Nickel Mines Limited	1904.65	0.86	-4.47	1.33	BUY	11.87	8.40	N/A	41.30	2.63	4.66	N/A
ORE	Orocobre Limited	880.75	2.45	-4.30	2.85	HOLD	-20.85	-27.24	-150.33	23.47	0.00	0.00	N/A
OZL	OZ Minerals	4923.02	14.55	-2.09	15.70	BUY	24.86	14.06	11.29	76.72	1.47	1.64	N/A
PLS	Pilbara Min Ltd	935.39	0.40	-4.76	0.36	HOLD	-12.50	-34.78	-93.94	64.06	0.00	0.00	N/A
PRN	Perenti Global Ltd	733.58	1.01	-3.35	1.68	BUY	6.55	6.34	-2.71	3.37	6.49	6.81	N/A
RIO	Rio Tinto Limited	34311.51	92.50	0.08	103.75	BUY	9.77	10.04	-0.48	-2.66	6.75	6.69	N/A
S32	South32 Limited	9837.92	2.05	0.99	2.73	BUY	38.15	15.94	-81.90	139.31	1.96	2.49	Daily share buy-back notice - Appendix 3E
SFR	Sandfire Resources	787.87	4.44	0.45	5.35	BUY	9.08	7.00	-27.98	29.68	3.19	3.68	N/A
SGM	Sims Limited	1914.99	9.53	0.21	9.50	HOLD	-33.10	49.24	-136.83	167.23	0.97	0.82	2020 Sustainability Report
WSA	Western Areas Ltd	529.50	1.89	-1.82	2.50	BUY	11.64	24.39	188.76	-52.29	1.28	1.00	Change of Directors Interest Notice

➤ Industrial stocks:

Code	Company Name	Market Cap (\$m)	Price (\$)	Daily Price Change (%)	Consensus Target Price (\$)	Consensus Rating	2020 PE	2021 PE	2020 EPS GROWTH	2021 EPS GROWTH	2020 Div Yield	2021 Div Yield	Newsflash
AIA	Auckland Internation	9630.48	6.55	0.15	6.73	HOLD	63.12	-1802.42	-52.52	-103.50	0.39	0.00	N/A
ALQ	ALS Ltd	4510.68	9.31	-0.43	9.54	BUY	23.93	26.61	7.22	-10.06	1.79	1.75	N/A
ALX	Atlas Arteria	5408.86	5.62	-0.35	6.98	BUY	49.29	15.90	-63.06	209.96	2.66	6.12	Atlas Arteria - Chairman Succession
AMA	AMA Group Limited	535.75	0.76	4.11	0.80	BUY	108.57	36.54	-87.15	197.14	0.11	0.00	N/A
ASB	Austal Limited	974.40	2.66	-1.85	4.34	BUY	11.14	11.12	49.48	0.17	2.63	3.27	Austal Delivers 8th Guardian Class Patrol Boat
AZJ	Aurizon Holdings Ltd	7115.83	3.74	-0.80	5.40	BUY	13.87	14.33	20.99	-3.22	7.21	7.01	On-Market Buy-back Appendix 3E
BIN	Bingo Industries Ltd	1602.48	2.48	1.22	2.56	BUY	31.44	40.08	-6.08	-21.56	1.25	1.04	N/A
BXB	Brambles Limited	14410.10	9.56	-0.31	12.25	BUY	20.37	19.48	-17.65	4.59	4.36	3.24	Appendix 3G
CIM	Cimic Group Ltd	6795.24	21.50	0.00	29.30	BUY	10.48	10.48	-16.75	0.06	3.23	5.92	Daily share buy-back notice - Appendix 3E
CWY	Cleanaway Waste Ltd	4218.60	2.06	0.49	2.45	BUY	29.76	26.51	-1.68	12.25	1.86	2.11	N/A
DOW	Downer EDI Limited	3085.69	4.47	1.59	5.29	BUY	16.04	12.17	-43.40	31.82	3.29	3.40	N/A
EHL	Emeco Holdings	413.48	0.74	-3.29	1.19	BUY	3.62	5.58	10.52	-35.17	0.00	0.00	N/A
EOS	Electro Optic Sys.	822.69	5.37	-2.36	7.67	STRONG BUY	29.67	22.42	-6.70	32.32	0.00	0.00	N/A
GWA	GWA Group Ltd	697.48	2.66	0.76	2.60	HOLD	14.51	17.53	-8.14	-17.27	5.04	4.07	N/A
IPH	IPH Limited	1420.66	6.51	-0.91	8.78	BUY	17.89	17.78	20.76	0.64	4.40	4.50	N/A
MMS	McMillan Shakespeare	722.74	9.27	-0.75	9.90	HOLD	10.57	10.29	-16.28	2.75	6.23	6.09	N/A
MND	Monadelphous Group	865.38	9.16	0.22	11.00	BUY	23.66	15.84	-41.75	49.33	3.12	4.58	N/A
NWH	NRW Holdings Limited	930.17	2.18	0.00	2.76	STRONG BUY	10.47	9.39	64.99	11.53	2.11	3.19	N/A
PET	Phoslock Env Tec Ltd	153.13	0.25	0.00	-	-	N/A	N/A	N/A	N/A	N/A	N/A	N/A
QAN	Qantas Airways	7902.53	4.31	2.86	4.93	BUY	-84.10	-10.31	-108.78	-715.96	1.05	0.00	N/A
QUB	Qube Holdings Ltd	5040.28	2.62	-1.13	3.08	BUY	40.65	43.81	-16.03	-7.21	1.90	1.78	N/A
RWC	Reliance Worldwide	3247.29	4.09	-0.49	4.33	HOLD	25.74	20.63	-17.70	24.76	1.91	2.29	N/A
SIQ	Smartgrp Corporation	721.22	5.35	-1.47	6.93	HOLD	11.36	10.43	-24.20	8.92	6.21	6.68	N/A
SSM	Service Stream	823.62	1.99	-1.24	2.55	STRONG BUY	13.93	14.10	1.06	-1.17	4.60	4.73	N/A
SVW	Seven Group Holdings	6590.33	19.39	-0.15	21.35	BUY	15.14	14.95	-6.33	1.32	2.10	2.34	N/A
SYD	SYD Airport	14707.92	5.69	4.40	6.14	HOLD	-62.38	919.22	-154.87	106.79	0.00	2.08	N/A
TCL	Transurban Group	36833.71	13.27	-1.41	14.11	HOLD	375.60	#####	-75.50	-101.81	3.52	2.99	Opening of NorthConnex Project in Sydney

➤ Consumer stocks:

Code	Company Name	Market Cap (\$m)	Price (\$)	Daily Price Change (%)	Consensus Target Price (\$)	Consensus Rating	2020 PE	2021 PE	2020 EPS GROWTH	2021 EPS GROWTH	2020 Div Yield	2021 Div Yield	Newsflash
ALG	Ardentleisuregrpltd	311.81	0.63	-3.85	0.70	BUY	-5.94	-4.58	-406.01	-29.69	0.00	0.00	N/A
ALL	Aristocrat Leisure	18281.52	28.66	0.10	32.60	BUY	38.83	24.32	-44.35	59.71	0.16	1.55	N/A
APE	Eagers Automotive	2790.29	10.95	0.83	12.75	BUY	29.08	20.68	-5.39	40.63	0.97	3.08	N/A
ARB	ARB Corporation.	2487.87	30.72	-0.16	30.25	HOLD	50.81	32.86	-16.12	54.60	1.02	1.60	N/A
AX1	Accent Group Ltd	899.50	1.62	-2.41	1.85	BUY	15.21	14.63	8.31	3.99	3.72	5.57	N/A
BAP	Bapcor Limited	2599.90	7.54	-1.57	8.65	BUY	26.60	22.70	-15.93	17.20	1.53	2.31	N/A
BBN	Baby Bunting Grp Ltd	527.36	4.10	0.49	5.39	BUY	27.70	21.30	30.40	30.07	2.36	3.23	N/A
BRG	Breville Group Ltd	3622.19	25.48	-2.26	27.46	HOLD	42.92	39.37	13.97	9.03	1.41	1.74	N/A
CCX	City Chic Collective	601.38	2.53	-3.80	3.70	BUY	31.72	27.88	-2.15	13.79	0.00	0.74	N/A
CKF	Collins Foods Ltd	1126.17	9.57	-0.93	10.65	BUY	28.40	24.42	-14.03	16.27	1.35	2.17	N/A
CTD	Corp Travel Limited	1986.43	14.67	0.48	18.70	BUY	51.92	232.71	-69.19	-77.69	1.23	0.10	CTM Completes Acquisition of Travel & Transport
CWN	Crown Resorts Ltd	5606.87	8.27	-0.12	10.00	BUY	36.16	477.21	-57.89	-92.42	4.29	4.58	N/A
DMP	Domino Pizza Enterpr	7331.12	85.09	0.42	77.30	HOLD	49.54	42.20	3.16	17.39	1.34	1.68	N/A
FLT	Flight Centre Travel	2241.87	11.39	1.15	14.30	HOLD	-7.84	-11.24	-165.47	30.19	0.00	0.00	N/A
GEM	G8 Education Limited	941.28	1.15	2.22	1.38	BUY	13.65	21.08	-41.52	-35.22	0.00	3.12	Change in substantial holding
GUD	G.U.D. Holdings	1097.87	12.46	-1.35	12.80	HOLD	21.30	18.80	-16.56	13.34	3.74	3.67	N/A
HVN	Harvey Norman	5532.27	4.42	-0.45	5.05	BUY	13.00	10.92	9.97	19.03	4.72	6.78	N/A
IEL	Idp Education Ltd	5366.32	19.73	2.33	21.00	BUY	112.17	106.43	-34.68	5.40	1.00	0.56	Change in substantial holding
IVC	InvoCare Limited	1453.57	10.13	0.40	10.75	HOLD	37.81	26.56	-45.06	42.39	2.66	3.13	N/A
JBH	JB Hi-Fi Limited	5448.92	47.80	0.78	48.50	HOLD	16.90	16.04	34.77	5.37	3.66	4.10	N/A
JIN	Jumbo Interactive	679.44	10.75	-1.19	13.89	BUY	27.19	22.87	-5.72	18.89	3.04	3.07	N/A
KGN	Kogan.Com Ltd	2176.54	20.35	-1.17	22.00	BUY	69.03	42.34	59.93	63.03	1.09	1.72	Change in substantial holding
KMD	Kathmandu Hold Ltd	776.36	1.08	-1.37	1.25	BUY	17.25	14.21	-49.59	21.35	1.15	3.89	N/A
LOV	Lovisa Holdings Ltd	805.95	7.26	-3.20	8.46	HOLD	17.76	35.74	18.57	-50.32	0.59	1.45	European Store Update November 2020
NCK	Nick Scall Limited	672.30	8.19	-1.33	9.20	BUY	16.88	11.18	-5.88	50.96	5.47	6.53	Change of Directors Interest Notice
PBH	Pointsbet Holdings	1727.87	9.80	-1.80	12.65	HOLD	-36.46	-30.80	N/A	-18.39	0.00	0.00	N/A
PMV	Premier Investments	3391.75	21.13	-1.03	20.50	HOLD	24.86	22.48	5.48	10.56	2.47	3.40	N/A
RDC	Redcape Hotel Group	516.30	0.94	0.53	1.09	STRONG BUY	22.38	12.37	-46.15	80.95	5.00	7.39	N/A
SGR	The Star Ent Grp	3122.61	3.21	-2.13	3.90	BUY	30.69	30.44	-56.87	0.84	3.32	0.00	N/A
SKC	Skycity Ent Grp Ltd	1991.74	2.50	-4.58	3.52	STRONG BUY	34.49	29.14	-68.66	18.37	3.71	1.93	N/A
SLK	Sealink Travel Grp	1275.45	5.86	0.34	6.28	BUY	33.98	22.09	-27.44	53.83	1.83	2.27	N/A
SUL	Super Ret Rep Ltd	2526.78	11.01	-1.61	12.26	BUY	15.02	12.97	-3.11	15.78	1.59	4.75	N/A
TAH	TABCORP Holdings Ltd	7294.39	3.31	0.61	3.66	HOLD	24.59	22.68	-31.81	8.42	3.59	2.50	N/A
TPW	Temple & Webster Ltd	1256.32	10.06	-3.55	12.60	BUY	143.71	52.29	577.64	174.86	0.00	0.00	N/A
WEB	Webjet Limited	1183.12	3.47	-0.57	3.70	HOLD	74.02	-18.72	-89.74	-495.44	1.26	0.00	N/A
WES	Wesfarmers Limited	52111.30	46.25	0.63	48.70	HOLD	26.21	26.57	1.42	-1.34	3.22	3.32	N/A

➤ Staple stocks:

Code	Company Name	Market Cap (\$m)	Price (\$)	Daily Price Change (%)	Consensus Target Price (\$)	Consensus Rating	2020 PE	2021 PE	2020 EPS GROWTH	2021 EPS GROWTH	2020 Div Yield	2021 Div Yield	Newsflash
AZM	The A2 Milk Company	10151.22	13.48	-1.39	16.35	HOLD	27.45	26.89	27.90	2.09	0.00	0.00	N/A
AAC	Australian Agricul.	672.08	1.11	-0.45	1.40	STRONG BUY	-35.81	-31.71	13.89	-12.90	0.00	0.00	N/A
AHY	Asaleo Care Limited	515.97	0.98	3.16	1.24	BUY	13.96	13.32	27.17	4.84	2.35	4.98	N/A
BGA	Bega Cheese Ltd	1075.79	5.02	0.40	5.70	HOLD	39.49	23.46	-31.16	68.33	1.74	2.37	N/A
BKL	Blackmores Limited	1359.37	70.56	0.43	67.00	HOLD	63.14	40.21	-67.91	57.02	0.00	1.61	N/A
BUB	Bubs Aust Ltd	422.82	0.63	-8.70	0.78	SELL	-52.50	-157.50	N/A	66.67	0.00	0.00	N/A
BWX	BWX Limited	527.48	3.80	0.53	5.02	BUY	31.73	28.52	30.87	11.27	1.07	1.30	N/A
CCL	Coca-Cola Amatil	8999.32	12.45	0.16	12.53	HOLD	29.06	24.21	-17.73	20.02	2.16	3.39	N/A
CGC	Costa Group Holdings	1426.96	3.51	-1.40	3.60	BUY	29.55	20.28	47.83	45.69	2.07	2.88	N/A
COL	Coles Group	23677.25	18.07	1.80	20.05	BUY	25.71	23.93	4.92	7.46	3.24	3.50	N/A
ELD	Elders Limited	1746.00	11.07	-1.25	11.81	BUY	16.69	14.85	31.36	12.40	1.82	2.18	N/A
FNP	Freedom Food Ltd	834.10	3.01	0.00	3.27	HOLD	72.83	29.32	-46.74	148.42	0.00	0.85	N/A
GNC	GrainCorp Limited	810.15	3.52	-0.56	4.75	BUY	-253.42	18.46	95.91	1472.71	0.11	3.03	N/A
ING	Inghams Group	1063.00	2.90	1.40	3.64	BUY	13.70	13.95	-24.90	-1.80	4.81	5.34	N/A
MTS	Metcash Limited	3015.97	2.93	-0.68	3.45	BUY	13.08	14.22	-2.29	-8.00	4.15	4.26	N/A
SHV	Select Harvests	732.68	6.08	-0.65	7.43	BUY	24.09	19.51	-49.17	23.46	2.33	3.06	N/A
SM1	Synlait Milk Ltd	902.21	4.90	-2.58	5.98	HOLD	11.81	12.14	-13.30	-2.65	0.00	0.00	N/A
TGR	Tassal Group Limited	748.12	3.53	-0.28	4.45	BUY	11.07	10.89	-0.78	1.65	5.19	5.17	N/A
TWE	Treasury Wine Estate	6614.71	9.24	0.76	12.35	BUY	21.04	19.43	-28.27	8.30	2.93	3.29	N/A
UMG	United Malt Group	1205.69	4.11	1.99	4.73	BUY	21.28	17.63	N/A	20.71	0.64	2.96	N/A
WOW	Woolworths Group Ltd	48286.19	38.53	0.97	43.00	BUY	29.53	26.56	-1.31	11.20	2.48	2.75	N/A

➤ Healthcare stocks:

Code	Company Name	Market Cap (\$m)	Price (\$)	Daily Price Change (%)	Consensus Target Price (\$)	Consensus Rating	2020 PE	2021 PE	2020 EPS GROWTH	2021 EPS GROWTH	2020 Div Yield	2021 Div Yield	Newsflash
ANN	Ansell Limited	5165.51	40.97	1.94	41.76	HOLD	25.00	21.30	3.27	17.36	1.74	1.99	ANSELL FY20 MODERN SLAVERY STATEMENT
API	Australian Pharm.	539.46	1.09	-0.91	1.08	HOLD	17.56	13.23	-42.65	32.69	0.92	5.12	Becoming a substantial holder for API
AVH	Avita Therapeutics	453.61	5.63	-5.06	13.00	BUY	-12.70	-8.19	-23.15	-55.05	0.00	0.00	N/A
COH	Cochlear Limited	13948.40	214.76	1.22	204.00	HOLD	81.66	62.99	-43.41	29.65	0.76	0.57	Appendix 3X - Christine Frances McLoughlin
CSL	CSL Limited	130831.01	286.05	-0.53	315.85	BUY	44.25	40.88	3.38	8.24	1.01	1.10	N/A
CUV	Clinuvel Pharmaceut.	1020.82	19.93	-3.53	28.89	STRONG BUY	N/A	76.21	N/A	N/A	N/A	0.09	N/A
EHE	Estia Health Ltd	347.52	1.28	-4.14	1.57	HOLD	12.40	18.80	-36.70	-34.02	6.38	4.54	N/A
FPH	Fisher & Paykel H.	18893.69	33.98	3.63	36.00	BUY	75.45	55.54	30.39	35.85	0.81	0.99	N/A
HLS	Healius	2099.54	3.40	0.89	3.78	HOLD	32.36	19.01	-33.18	70.18	1.32	2.10	Appendix 3X Initial Directors Interest Notice
IDX	Integral Diagnostics	833.89	4.12	-1.90	4.60	BUY	27.14	22.47	-8.82	20.79	2.38	2.74	N/A
MSB	Mesoblast Limited	1794.96	3.05	-0.33	3.60	HOLD	-16.97	-18.29	50.74	7.18	0.00	0.00	N/A
MVF	Monash IVF Group Ltd	224.04	0.57	-0.87	0.73	BUY	12.20	12.04	-44.41	1.31	2.26	5.26	N/A
MVP	Medical Developments	349.12	5.24	-1.50	7.85	BUY	683.18	374.29	-43.89	82.53	0.70	0.38	N/A
MYX	Mayne Pharma Ltd	503.72	0.30	-1.67	0.37	HOLD	-196.67	52.96	-108.51	471.33	0.00	0.00	N/A
NAN	Nanosonics Limited	1550.17	5.05	-1.94	5.50	SELL	113.33	125.00	25.52	-9.34	0.00	0.00	N/A
OPT	Opthea Limited	732.73	2.20	1.38	4.40	BUY	-15.00	36.07	-56.03	141.59	0.00	0.00	Change in substantial holding
PAR	Paradigm Bio.	609.81	2.78	2.96	2.54	HOLD	-36.82	-19.04	-98.68	-93.38	0.00	0.00	N/A
PME	Pro Medicus Limited	3375.41	32.09	-0.93	29.65	HOLD	138.92	113.05	34.41	22.88	0.37	0.44	N/A
PNV	PolyNovo Limited	1718.83	2.48	-4.62	2.45	BUY	-594.72	496.00	10.71	219.90	0.00	0.00	PolyNovo enters Greece - Distributor Appointment
RHC	Ramsay Health Care	14270.77	62.19	-0.26	66.50	HOLD	36.57	31.26	-40.63	16.98	1.05	1.45	N/A
RMD	ResMed Inc.	9980.09	27.47	-1.61	27.00	HOLD	43.45	39.70	25.10	9.44	0.83	0.88	FORM 10Q for Qtr ended September, 2020
SHL	Sonic Healthcare	16634.37	34.92	0.29	35.84	BUY	32.15	21.16	-6.40	51.94	2.16	3.17	N/A
SIG	Sigma Health Ltd	561.46	0.52	-2.83	0.69	BUY	40.65	14.59	-70.42	178.53	3.43	0.58	N/A
SPL	Starpharma Holdings	577.95	1.35	-5.92	2.03	STRONG BUY	-37.50	-55.10	-9.09	31.94	0.00	0.00	N/A
VRT	Virtus Health Ltd	360.95	4.30	-4.23	4.00	BUY	16.95	16.85	-27.98	0.59	3.02	3.57	N/A

➤ Bank stocks:

Code	Company Name	Market Cap (\$m)	Price (\$)	Daily Price Change (%)	Consensus Target Price (\$)	Consensus Rating	2020 PE	2021 PE	2020 EPS GROWTH	2021 EPS GROWTH	2020 Div Yield	2021 Div Yield	Newsflash
AFG	Aust Finance Grp	539.45	1.97	-2.24	2.11	BUY	12.83	12.70	11.33	0.99	4.34	4.80	N/A
ANZ	ANZ Banking Grp Ltd	53427.36	19.26	2.39	21.02	BUY	14.82	12.08	-41.87	22.73	2.97	4.70	N/A
BEN	Bendigo and Adelaide	3545.60	6.78	1.35	7.00	HOLD	11.74	12.83	-28.57	-8.47	5.40	4.00	N/A
BOQ	Bank of Queensland.	2916.83	6.42	0.00	6.91	HOLD	13.62	12.97	-40.13	5.01	1.44	4.06	Change in substantial holding
CBA	Commonwealth Bank.	122448.13	68.87	-0.22	71.00	HOLD	16.46	17.66	-14.18	-6.79	3.94	3.69	N/A
GMA	Genworth Mortgage	703.34	1.70	-0.59	2.37	HOLD	-20.80	11.89	-129.64	274.85	0.74	4.28	N/A
MYS	MyState Limited	370.88	4.05	0.50	4.50	BUY	11.95	10.46	-0.59	14.26	6.16	6.53	N/A
NAB	National Aust. Bank	61195.74	18.82	1.18	20.89	BUY	14.56	13.14	-29.84	10.80	3.08	4.41	N/A
VUK	Virgin Money UK PLC	1568.57	1.70	3.66	1.80	HOLD	15.43	9.19	-76.82	67.90	0.00	0.86	N/A
WBC	Westpac Banking Corp	64685.28	17.80	-0.61	20.55	BUY	21.62	11.55	-58.45	87.12	1.56	4.57	Westpac 2020 Full Year Financial Results Announcement

➤ Diversified Financials / Insurance stocks:

Code	Company Name	Market Cap (\$m)	Price (\$)	Daily Price Change (%)	Consensus Target Price (\$)	Consensus Rating	2020 PE	2021 PE	2020 EPS GROWTH	2021 EPS GROWTH	2020 Div Yield	2021 Div Yield	Newsflash
AEF	Australian Ethical	479.89	4.28	0.23	-	-	N/A	N/A	N/A	N/A	N/A	N/A	N/A
AMP	AMP Limited	5258.00	1.68	9.80	1.45	HOLD	17.87	16.10	-46.31	10.99	6.08	3.32	AMP provides further update on portfolio review
ASX	ASX Limited	15415.98	80.15	0.65	73.00	SELL	30.87	32.17	1.34	-4.05	2.92	2.80	N/A
AUB	AUB Group Ltd	1240.65	16.69	0.06	17.00	BUY	24.23	21.30	7.70	13.79	2.77	3.09	N/A
CCP	Credit Corp Group	1233.22	17.67	-3.55	22.03	BUY	13.20	17.28	-5.22	-23.62	3.01	2.90	N/A
CGF	Challenger Limited	3249.71	4.85	0.83	4.63	BUY	9.58	12.05	-11.37	-20.47	3.94	4.33	N/A
CNI	Centuria Capital	1245.49	2.27	-2.16	2.46	STRONG BUY	18.99	19.63	-5.77	-3.25	4.31	3.80	Becoming a substantial holder
ECX	Eclixp Group Ltd	474.66	1.44	-3.03	1.70	BUY	11.52	10.85	17.04	6.20	0.00	2.20	N/A
FXL	FlexiGroup Limited	465.55	0.92	-2.13	1.36	HOLD	8.86	8.68	-47.24	2.18	5.29	2.88	N/A
HUB	HUB24 Ltd	1450.43	21.35	-7.05	22.00	BUY	99.36	72.93	38.51	36.24	0.37	0.56	N/A
IAG	Insurance Australia	11023.69	4.68	-1.89	5.80	BUY	32.92	15.31	-64.46	114.98	2.23	4.66	IAG CEO appoints CFO and announces executive changes
IFL	IOOF Holdings Ltd	1896.03	2.88	-1.37	4.61	BUY	8.67	10.91	-35.24	-20.59	9.08	6.08	N/A
JHG	Janus Henderson	1300.48	34.97	0.23	40.05	BUY	9.73	9.55	-2.23	1.88	6.07	6.17	N/A
MFG	Magellan Fin Grp Ltd	10118.48	54.87	-0.42	60.00	HOLD	22.96	22.39	18.82	2.55	3.95	4.09	N/A
MNY	Money3 Corporation	416.89	2.27	0.89	2.86	BUY	16.04	12.25	-29.34	30.98	4.41	4.92	N/A
MPL	Medibank Private Ltd	7353.19	2.66	-0.37	2.82	BUY	20.71	19.45	-22.11	6.49	4.31	4.39	N/A
MQG	Macquarie Group Ltd	45820.58	127.37	0.49	130.92	BUY	15.56	20.94	-5.84	-25.72	4.20	2.86	N/A
NGI	Navigator Global Ltd	249.71	1.45	-5.84	2.24	STRONG BUY	6.03	9.84	-14.29	-38.73	14.86	9.45	N/A
NHF	NIB Holdings Limited	1901.81	4.14	-0.48	4.80	BUY	17.14	15.84	-31.17	8.23	4.11	3.83	N/A
NWL	Netwealth Group	4107.37	17.09	-1.10	14.43	HOLD	95.77	80.53	21.64	18.93	0.82	0.97	N/A
OBL	Omni Bridgeway Ltd	876.51	3.34	-3.19	5.45	BUY	-148.44	6.61	40.94	2346.67	1.80	2.10	N/A
OFX	OFX Group Ltd	303.62	1.24	-0.40	-	-	20.67	N/A	-23.57	N/A	4.03	N/A	N/A
PDL	Pendal Group Ltd	2088.53	6.40	-1.08	7.02	BUY	13.30	13.75	-6.40	-3.26	6.04	6.24	N/A
PNI	Pinnacle Investment	947.39	4.94	-2.37	6.01	BUY	28.64	26.81	6.81	6.81	2.93	3.18	N/A
PPT	Perpetual Limited	1537.04	27.03	-0.63	35.49	BUY	14.06	13.71	-25.03	2.51	6.36	5.37	N/A
PTM	Platinum Asset	1789.37	3.03	-0.66	3.20	SELL	12.04	14.04	-7.42	-14.27	8.15	6.91	N/A
QBE	QBE Insurance Group	12134.63	8.24	-0.12	12.03	BUY	-19.38	11.49	-149.70	268.68	2.03	5.25	Appendix 3G
SDF	Steadfast Group Ltd	3091.77	3.55	-0.28	3.90	BUY	23.00	20.93	12.01	9.88	2.48	2.96	N/A
SUN	Suncorp Group Ltd	10513.74	8.12	-1.10	10.26	BUY	15.46	12.43	-37.70	24.44	4.53	5.59	N/A
ZIP	Zip Co Ltd.	2967.97	5.65	-1.22	8.24	HOLD	-56.15	-54.80	-262.63	-2.46	0.00	0.00	N/A

➤ Property stocks:

Code	Company Name	Market Cap (\$m)	Price (\$)	Daily Price Change (%)	Consensus Target Price (\$)	Consensus Rating	2020 PE	2021 PE	2020 EPS GROWTH	2021 EPS GROWTH	2020 Div Yield	2021 Div Yield	Newsflash
ABP	Abacus Property Grp.	1844.00	2.85	2.89	2.90	BUY	15.27	15.73	-33.95	-2.89	6.41	6.18	Abacus acquires balance of Storage King operating platform
ADI	Apn Industria REIT	519.49	2.63	0.00	2.73	BUY	13.35	14.01	7.65	-4.74	6.57	6.53	N/A
ARF	Arena REIT	900.34	2.68	1.52	2.82	BUY	16.93	17.99	14.08	-5.87	5.23	5.34	N/A
AVN	Aventus Group	1396.04	2.43	-1.22	2.50	BUY	13.85	13.55	-2.56	2.24	4.91	5.78	N/A
BWP	BWP Trust	2575.96	4.03	0.50	3.23	SELL	22.48	22.36	-2.69	0.56	4.50	4.49	N/A
CHC	Charter Hall Group	5747.69	12.27	-0.57	13.10	BUY	18.23	22.98	45.13	-20.65	2.92	3.09	N/A
CIP	Centuria I REIT	1565.18	3.06	-0.33	3.23	HOLD	16.30	17.72	-43.38	-8.02	5.99	5.54	N/A
CLW	Chtr H Lwr	2463.24	4.84	1.47	5.47	BUY	16.70	16.41	6.94	1.79	5.79	6.03	N/A
CMW	Cromwell Prop	2290.29	0.92	5.14	1.01	HOLD	11.85	13.19	0.96	-10.13	8.56	8.56	N/A
COF	Centuria Office REIT	1059.92	2.05	-0.49	2.27	BUY	11.40	11.31	-14.55	0.83	8.66	8.10	N/A
CQE	Charter Hall Soc In	1047.64	2.85	-1.72	3.20	BUY	16.62	18.39	-11.06	-9.62	5.61	5.23	N/A
CQR	Charter Hall Retail	1964.05	3.49	1.45	3.55	HOLD	11.87	13.59	-5.13	-12.65	7.13	6.50	N/A
CWP	Cedar Woods Prop.	463.47	5.59	-2.61	5.80	HOLD	20.25	14.63	-57.11	38.41	3.22	3.67	First Quarter FY21 Operational Update
DXS	Dexus	9395.25	8.80	2.21	9.74	HOLD	14.22	14.11	1.18	0.80	5.61	5.68	Sale of 60 Miller Street North Sydney
GDI	GDI Property Grp	577.26	1.07	0.00	1.48	STRONG BUY	N/A	19.72	N/A	N/A	N/A	7.32	N/A
GMG	Goodman Group	33992.70	18.61	1.14	18.73	HOLD	32.37	30.05	12.11	7.72	1.61	1.61	N/A
GOZ	Growthpoint Property	2625.29	3.43	0.88	3.56	BUY	14.69	14.22	1.19	3.30	6.38	5.89	N/A
GPT	GPT Group	7850.16	4.15	2.98	4.35	BUY	16.06	13.58	-19.83	18.27	4.66	5.70	Planned Sale of GPTs 25% interest in 1 Farrer Place Sydney
HPI	Hotel Property	487.47	3.06	-0.97	3.15	BUY	15.30	15.61	2.56	-2.00	6.54	6.34	Change of Directors Interest Notice
IAP	Investec Aust Prop	758.01	1.20	-3.23	1.70	-	13.79	12.37	N/A	11.49	7.46	7.46	N/A
INA	Ingenia Group	1505.86	4.65	0.87	5.33	STRONG BUY	22.04	21.78	10.24	1.18	2.36	2.19	N/A
LIC	Lifestyle Communit.	1064.27	10.13	-0.49	9.90	BUY	38.15	28.42	-30.86	34.27	0.59	0.57	N/A
LLC	Lendlease Group	8231.68	12.35	3.26	14.00	BUY	86.90	18.56	-82.17	368.14	2.64	2.49	N/A
MGR	Mirvac Group	8308.24	2.13	0.95	2.41	HOLD	13.54	15.16	-5.39	-10.71	4.58	4.71	N/A
NSR	National Storage	1836.93	1.81	0.00	1.83	HOLD	21.85	22.61	-16.06	-3.35	4.44	4.40	N/A
RFF	Rural Funds Group	812.06	2.37	-1.25	2.43	BUY	15.46	16.04	10.98	-3.59	4.54	4.76	N/A
SCG	Scentre Grp	10899.79	2.15	2.38	2.35	HOLD	14.41	11.26	-40.36	28.00	4.04	7.14	N/A
SCP	SCA Property Group	2497.65	2.35	1.29	2.31	HOLD	15.57	16.56	-6.21	-5.97	5.63	5.20	N/A
SGP	Stockland	9190.26	3.99	3.64	4.11	HOLD	12.38	12.88	-9.98	-3.87	6.10	6.08	N/A
URW	UnibailRodawestfield	640.31	2.94	1.38	2.96	HOLD	4.40	4.23	-34.40	4.01	8.89	12.94	URW REPORTS Q3-2020 EARNINGS
VCC	Vicinity Centres	5508.25	1.26	3.72	1.38	HOLD	8.60	15.30	-18.15	-43.80	6.43	6.39	N/A
WPR	Waypoint REIT	2103.86	2.73	1.87	2.88	BUY	18.15	17.11	0.94	6.12	5.50	5.85	N/A

➤ IT stocks:

Code	Company Name	Market Cap (\$m)	Price (\$)	Daily Price Change (%)	Consensus Target Price (\$)	Consensus Rating	2020 PE	2021 PE	2020 EPS GROWTH	2021 EPS GROWTH	2020 Div Yield	2021 Div Yield	Newsflash
AD8	Audinate Group Ltd	543.89	7.10	-0.70	7.50	BUY	-731.20	-174.88	-331.19	-318.13	0.00	0.00	N/A
ALU	Altium Limited	4869.31	36.37	-2.18	36.30	HOLD	78.77	63.10	-23.62	24.83	1.20	1.43	N/A
APT	Afterpay Limited	27505.16	98.27	1.63	105.65	BUY	-1133.58	1029.44	-120.64	210.12	0.00	0.00	N/A
APX	Appen Limited	3931.92	32.25	-0.22	40.00	BUY	53.73	37.52	15.00	43.23	0.34	0.48	N/A
BVS	Bravura Solution Ltd	724.19	2.88	-1.71	4.50	HOLD	17.74	17.67	9.68	0.41	3.83	3.87	N/A
CDA	Codan Limited	2129.97	11.67	-1.10	10.50	BUY	33.37	27.09	41.79	23.17	1.54	1.96	N/A
CPU	Computershare Ltd	6571.69	12.19	0.33	14.21	HOLD	15.90	17.53	-24.88	-9.30	3.28	3.52	N/A
DDR	Dicker Data Limited	1655.50	9.66	0.42	-	-	N/A	N/A	N/A	N/A	N/A	N/A	N/A
DTL	Data#3 Limited	959.26	5.90	-5.30	4.20	HOLD	38.69	33.33	27.08	16.07	2.36	2.71	N/A
ELO	Elmo Software	481.34	5.40	-3.05	7.60	BUY	-24.84	-20.26	-93.67	-22.59	0.00	0.00	N/A
EML	EML Payments Ltd	1088.38	2.92	-2.99	4.28	BUY	33.66	27.21	86.84	23.72	0.00	0.00	N/A
HSN	Hansen Technologies	783.28	3.80	-3.55	4.20	BUY	19.10	15.47	17.06	23.45	1.62	2.64	N/A
IFM	Infomedia Ltd	581.59	1.51	-2.58	2.00	BUY	27.88	27.37	6.74	1.85	2.74	2.68	N/A
IRE	IRESS Limited	1772.80	8.97	-2.18	11.48	HOLD	23.18	21.92	-8.98	5.72	4.82	5.02	Becoming a substantial holder for IRE
IRI	Integrated Research	604.33	3.47	-1.14	4.25	STRONG BUY	24.79	22.68	11.11	9.29	2.31	2.31	N/A
LNK	Link Admin Hldg	2534.17	4.73	-0.84	5.10	HOLD	18.53	21.01	-31.34	-11.84	2.49	2.33	Final Directors Interest Notice - John McMurtrie
MP1	Megaport Limited	2080.44	13.29	-1.34	16.55	BUY	-55.38	-63.22	2.17	12.41	0.00	0.00	N/A
NEA	Nearmap Ltd	1127.79	2.25	-2.17	3.13	BUY	-27.78	-38.05	-636.36	27.00	0.00	0.00	N/A
NXT	Nextdc Limited	5806.93	12.66	-0.63	13.89	BUY	-338.59	-1751.04	-169.38	80.66	0.00	0.00	N/A
TNE	Technology One	2864.08	8.83	-1.56	8.66	HOLD	44.40	39.66	13.98	11.96	1.45	1.65	N/A
TYR	Tyro Payments	1848.69	3.58	-3.24	4.00	HOLD	-75.10	-104.53	N/A	28.15	0.00	0.00	COVID-19 Trading Update 33 - Week Ended 30 October 2020
WTC	WiseTech Global Ltd	9353.32	28.53	-1.25	26.00	HOLD	130.72	105.32	21.32	24.11	0.12	0.15	N/A
XRO	Xero Ltd	15734.57	110.88	0.66	85.00	HOLD	981.07	420.93	423.74	133.07	0.00	0.00	N/A

➤ **Communication stocks:**

Code	Company Name	Market Cap (\$m)	Price (\$)	Daily Price Change (%)	Consensus Target Price (\$)	Consensus Rating	2020 PE	2021 PE	2020 EPS GROWTH	2021 EPS GROWTH	2020 Div Yield	2021 Div Yield	Newsflash
CAR	Carsales.Com Ltd.	5116.71	20.60	-0.82	19.50	HOLD	42.05	36.20	-9.23	16.16	2.02	2.31	N/A
CNU	Chorus Limited	3495.73	7.88	0.77	-	-	70.27	73.71	-6.84	-4.67	2.86	2.98	N/A
DHG	Domain Holdings Aus	2302.00	3.84	-2.54	3.55	HOLD	125.33	73.07	-57.11	71.51	0.78	0.82	N/A
EVT	Event Hospitality	1329.86	7.95	-3.64	9.30	BUY	47.18	-68.73	-75.79	-168.65	2.64	1.91	N/A
NEC	Nine Entertainment	3547.22	2.13	2.40	2.10	BUY	24.33	23.81	-36.02	2.15	3.28	3.01	N/A
NWS	News Corp.	845.50	18.41	1.49	25.00	BUY	74.26	50.76	-59.05	46.29	1.39	1.60	N/A
OML	Ooh!Media Limited	775.24	1.28	-2.67	1.25	BUY	-48.30	32.20	-116.49	250.00	0.00	0.47	N/A
REA	REA Group	15577.90	119.67	1.18	108.00	HOLD	59.60	52.41	-15.40	13.73	0.88	1.01	N/A
SEK	Seek Limited	7593.68	21.33	-0.84	20.45	HOLD	72.99	157.65	-47.41	-53.70	0.81	0.46	Response to Blue Orca Capital report
SLC	Superloop Limited	336.60	0.90	-2.17	1.23	BUY	-9.62	-13.72	-30.69	29.91	0.14	0.11	N/A
SPK	Spark New Zealand	7796.38	4.25	0.95	-	HOLD	20.25	20.84	2.42	-2.86	5.52	5.27	N/A
SKL	Sthn Cross Media	462.37	0.17	-2.86	0.18	HOLD	7.33	13.08	-67.42	-43.97	7.06	0.00	N/A
TLS	Telstra Corporation.	31874.04	2.73	1.87	3.50	BUY	14.81	20.01	-9.31	-26.02	5.83	5.68	N/A
TPG	TPG Telecom Limited	13350.07	7.12	-0.84	8.71	BUY	48.41	35.76	N/A	35.35	0.86	1.72	N/A
UWL	Uniti Group Ltd	593.50	1.16	-2.52	1.82	STRONG BUY	23.56	19.17	354.73	22.87	0.00	0.00	N/A
VOC	Vocus Group Ltd	2143.19	3.41	-1.16	3.40	HOLD	20.06	19.92	4.41	0.69	0.00	0.00	N/A
VRL	Village Roadshow Ltd	435.52	2.24	0.45	2.20	HOLD	-12.44	-18.48	-254.28	32.67	0.45	0.00	N/A

➤ **Utility stocks:**

Code	Company Name	Market Cap (\$m)	Price (\$)	Daily Price Change (%)	Consensus Target Price (\$)	Consensus Rating	2020 PE	2021 PE	2020 EPS GROWTH	2021 EPS GROWTH	2020 Div Yield	2021 Div Yield	Newsflash
AGL	AGL Energy Limited.	7775.46	12.71	1.84	14.47	HOLD	10.14	12.81	-19.06	-20.81	7.52	7.70	N/A
APA	APA Group	12377.09	10.77	2.67	11.24	HOLD	40.73	41.20	2.37	-1.13	4.64	4.67	N/A
AST	AusNet Services Ltd	7506.10	2.01	0.50	1.90	HOLD	27.26	27.89	5.46	-2.24	5.02	4.59	N/A
SKI	Spark Infrastructure	3450.02	2.02	1.76	2.29	HOLD	43.91	54.92	-23.70	-20.04	6.83	6.04	N/A

Disclaimer

This document was prepared by Deep Data Analytics. Deep Data Analytics and its related bodies corporate ("DDA"), its directors and/or employees charge a subscription for this report. Deep Data Analytics as principal, its directors and/or employees and their associates may hold securities in the companies mentioned in this report. Deep Data Analytics may seek to do business with any of the companies outlined in this report and should not be considered independent. This document contains Deep Data Analytics proprietary processed data and publicly available information. The information has not been verified or audited, and you are strongly advised to make your own independent assessment and investigation in respect of any matters contained in the document, including to seek independent professional advice. The document has been provided to you for your general information purposes only. It does not consider your particular investment objectives, financial situation or other specific needs. This report has been provided to you on the condition that it is purely general advice and not to be considered as personal advice at any level.

Deep Data Analytics or their respective directors, officers, employees or shareholders makes any representation or warranty, expressed or implied, and takes no responsibility, in respect of the accuracy, reliability, completeness or thoroughness of any of the information contained in this document. Each of those parties, to the maximum extent permitted by law, expressly disclaims, and as a recipient, you expressly release each of those parties from, all liabilities, including (without limitation) liability for negligence in respect of, any part of the information contained in the document. No such parties are under any obligation to update any information in this document or correct any inaccuracies or omissions that may exist or become apparent. Neither this document nor any additional information which may subsequently be provided to a recipient shall constitute or form part of any offer, solicitation, invitation, advice or recommendation to sell or acquire any securities or assets.

Deep Data Analytics provides this financial advice as an honest and reasonable opinion held at a point in time about an investment's risk profile and merit and the information is provided by the Deep Data Analytics in good faith. The views of the adviser(s) do not necessarily reflect the views of the AFS Licensee. Deep Data Analytics has no obligation to update the opinion unless Deep Data Analytics is currently contracted to provide such an updated opinion. Deep Data Analytics does not warrant the accuracy of any information it sources from others. All statements as to future matters are not guaranteed to be accurate and any statements as to past performance do not represent future performance. Assessment of risk can be subjective. Portfolios of equity investments need to be well diversified and the risk appropriate for the investor. Equity investments in listed or unlisted companies yet to achieve a profit or with an equity value less than \$50 million should collectively be a small component of a balanced portfolio, with smaller individual investment sizes than otherwise. Investors are responsible for their own investment decisions, unless a contract stipulates otherwise. Deep Data Analytics does not stand behind the capital value or performance of any investment. Subject to any terms implied by law and which cannot be excluded, Deep Data Analytics shall not be liable for any errors, omissions, defects or misrepresentations in the information (including by reasons of negligence, negligent misstatement or otherwise) or for any loss or damage (whether direct or indirect) suffered by persons who use or rely on the information. If any law prohibits the exclusion of such liability, Deep Data Analytics limits its liability to the re-supply of the Information, provided that such limitation is permitted by law and is fair and reasonable.

Copyright © Deep Data Analytics. All rights reserved. This material is proprietary to Deep Data Analytics and may not be disclosed to third parties. Any unauthorized use, duplication or disclosure of this document is prohibited. The content has been approved for distribution by Deep Data Analytics (ABN 67 159 532 213 AFS Representative No. 1282992) which is a corporate approved representative of BR Securities (ABN 92 168 734 530 and holder of AFSL No. 456663). Deep Data Analytics is the business name of ABN 67 159 532 213.