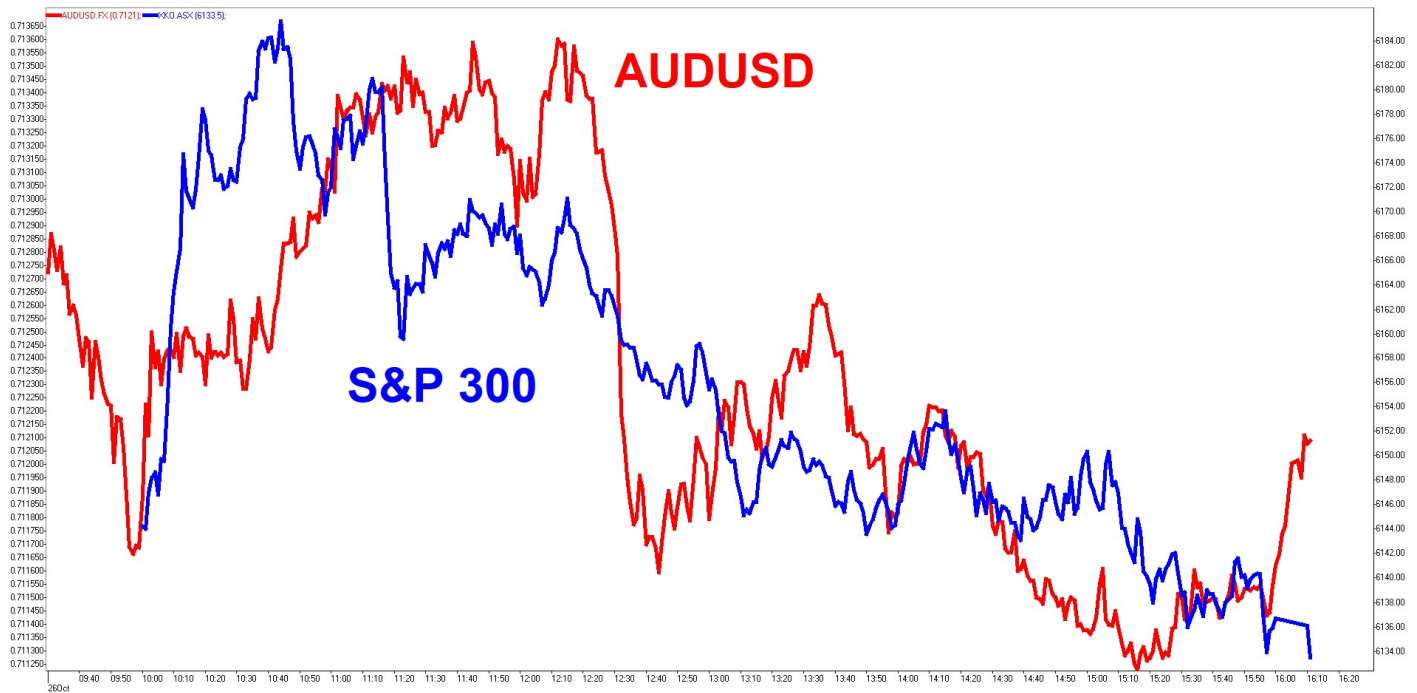




INVESTMENT MOTTO: "Life is all about cycles. You evolve with the cycles or they run over you."

MARKET SNAPSHOT AND INTRADAY CHART



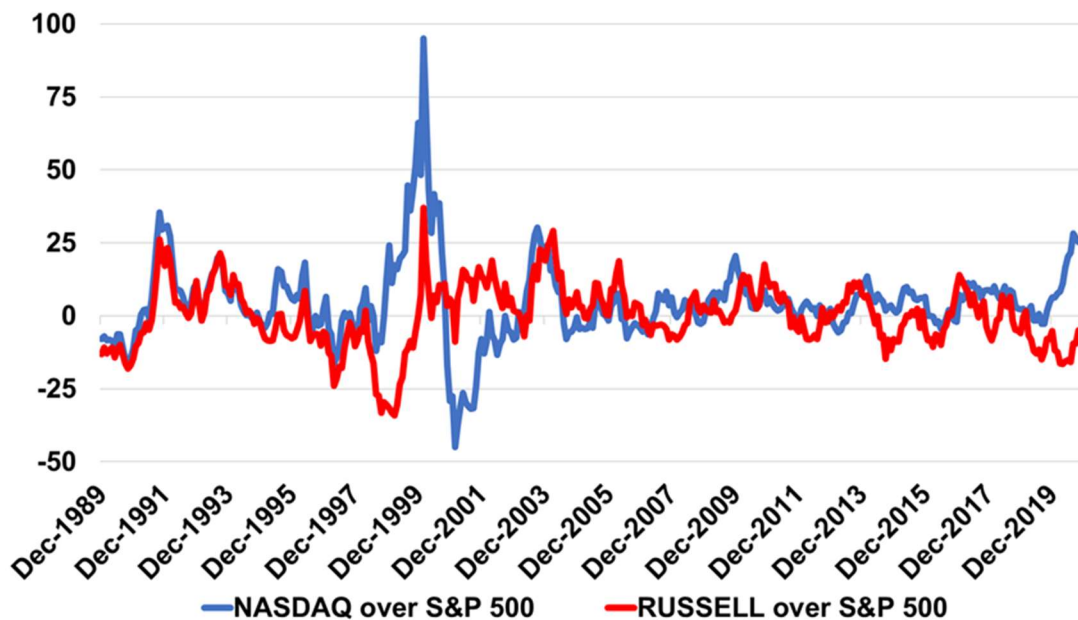
Security	Last	+/-	%	Security	Last	+/-	%	Security	Last	+/-	%
S&P 300	6133.50	-12.80	-0.21	DXY	92.9200	0.2100	0.23	SPTGLD	1898.11	-8.49	-0.45
S&P 200	6155.60	-11.40	-0.18	AUDUSD	0.7121	-0.0018	-0.26	TWI	59.80	0.10	0.17
All Ords	6357.30	-16.40	-0.26	NZDAUD	0.9392	0.0015	0.15	WTIS	39.06	-0.79	-1.98
Small Ords	2843.80	-14.70	-0.51	GBPAUD	1.8297	0.0006	0.04	BRENT	41.03	-0.56	-1.35
Micro Cap	1729.50	-42.80	-2.41	EURAUD	1.6622	0.0018	0.11	COPP3M	6897.50	-4.00	-0.06
NZ50G	12470.34	0.00	0.00	EURUSD	1.1836	-0.0019	-0.16	NICK3M	15796.00	56.00	0.36
JAPAN	23491.22	-25.37	-0.11	USDJPY	104.9025	0.2265	0.22	ZINC	2565.50	25.50	1.00
KOSPI	2351.77	-9.04	-0.38	CNYUSD	0.1496	0.0000	-0.01	Security	Last	+/-	%
SING	2534.94	-2.45	-0.10	Security	Last	+/-	%	DOWFUT	28024.00	-165.00	-0.59
SHANGHAI	3254.54	-23.46	-0.72	USBON	0.8178	-0.0226	-2.70	NASFUT	11621.50	-42.00	-0.36
HNGKNG	24918.78	0.00	0.00	USLBR	1.6153	-0.0268	-1.63	SPFUT	3434.25	-17.50	-0.51
GERMAN	12645.75	102.69	0.82	BOND10	0.8120	-0.0475	-5.53				
CAC40	4909.64	58.26	1.20	BBSR3M	0.0600	0.0000	0.00				
FTSE	5860.28	74.63	1.29	VIX	27.55	-0.56	-1.99				
DOWJON	28335.57	-28.09	-0.10	XVI	20.52	1.50	7.89				
NASDAQ	11548.28	42.28	0.37								
SP500	3465.39	11.90	0.34								

Sources: AFR, AAP, ASX, Bloomberg, CNBC, CNN, FactSet, Hedgeye, IRESS, Market Watch, Thomson Reuters, S&P, SMH, Trading Economics

MARKET COMMENTARY:

1. Local market started positive before sliding into negative territory as global traders were chasing the AUDUSD lower. Weak AUDUSD pushed down Banks and Miners helping Health Care and local defensives like Staples and Telecom. The covid19 pandemic is out of control in most regions while economic recovery has started to fade. China remains the only region to manage economic and health recovery but Australia has managed to ramp up geopolitics against the main trading partner. State and federal government level miss management and fraud are getting found out almost on a daily basis while RBA is debasing themselves away from relevance to Australian economy. Australia is unlikely to be able to defend itself against a global deleveraging meltdown without Chinese help. Bond and Currency markets are sending warning signals!!!

The macro cycle is moving from high multiple growth to cyclical growth stocks. Russell outperforming NASDAQ. The last time we had such a switch was in DotCom bubble. Is it different this time? All bubbles eventually do burst...it is a matter of time!!!

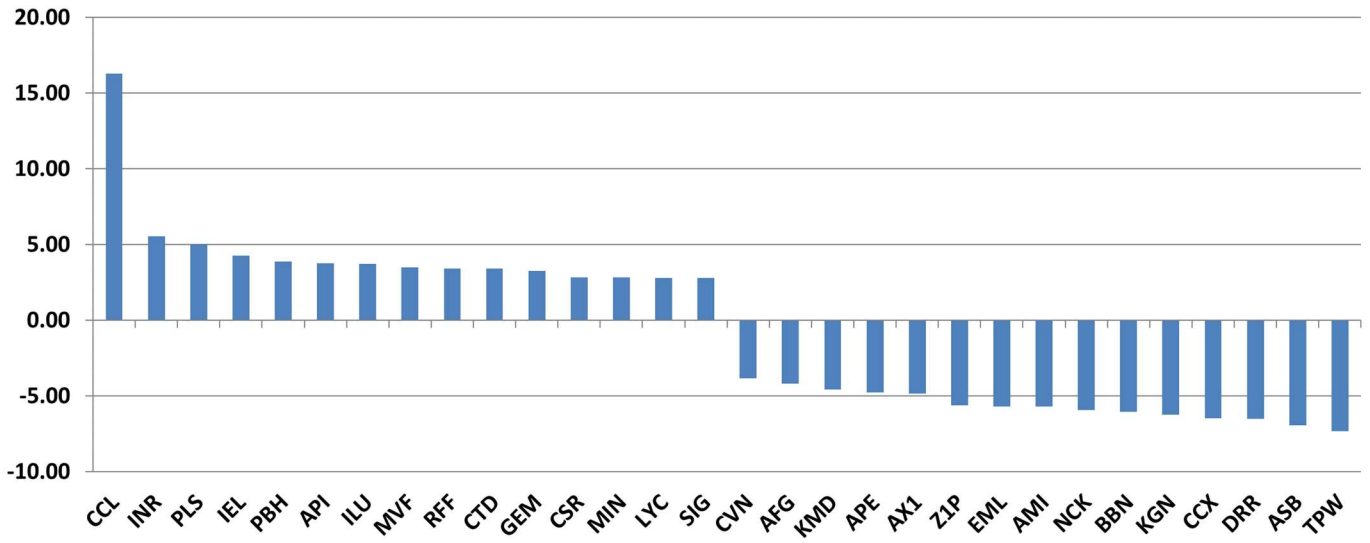


Friday overnight US market fell most of the day to be down over 200 before recovering in the last few hours to close down 30 odd. Russell again lead the indices in positive territory except for DOW. Bonds ticked higher while USD and commodities were lower. Retail and Property were the best sectors while Energy and Tech were the worst. Pandemic is going rampant through EU and US as Fauci said Trump hasn't been at Covid updates for months. Debate was a potential catalyst but the best performer was the moderator with the mute button. Trump needed a clean big win and it wasn't that. Each side will claim it but it is all about swing states and Biden leading a few and the rest are too close. US Election always gets close into the event and this one is no different. No change to stimulus chat...more talk and very little action. Vaccines are progressing at expected slow pace. Stimulus and vaccine unlikely to be in play for election.

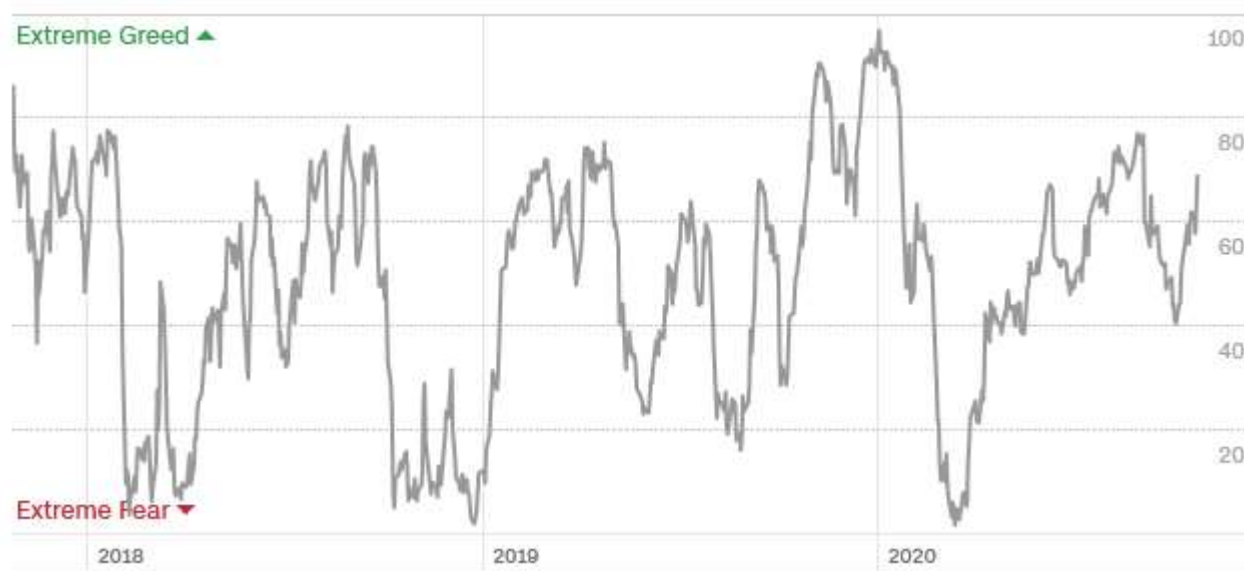
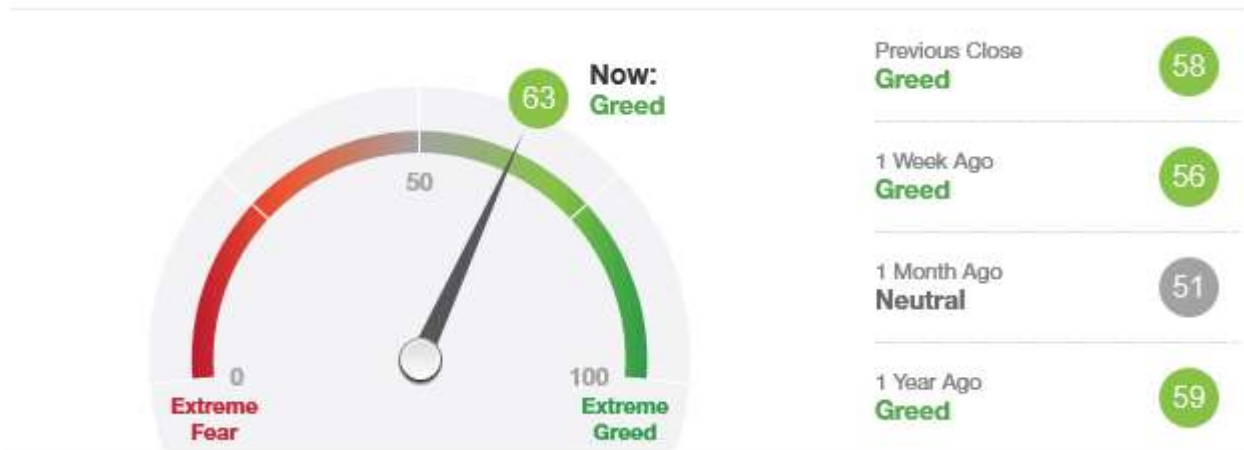
Remain nimble, contrarian and cautiously pragmatic with elevated global macro risks!!! Buckle up...it's going to get bumpy!!!

2. Movers and Shakers in S&P 300 >

S&P 300 Best/Worst 15 Performers (%)



3. Market sentiment from CNN >

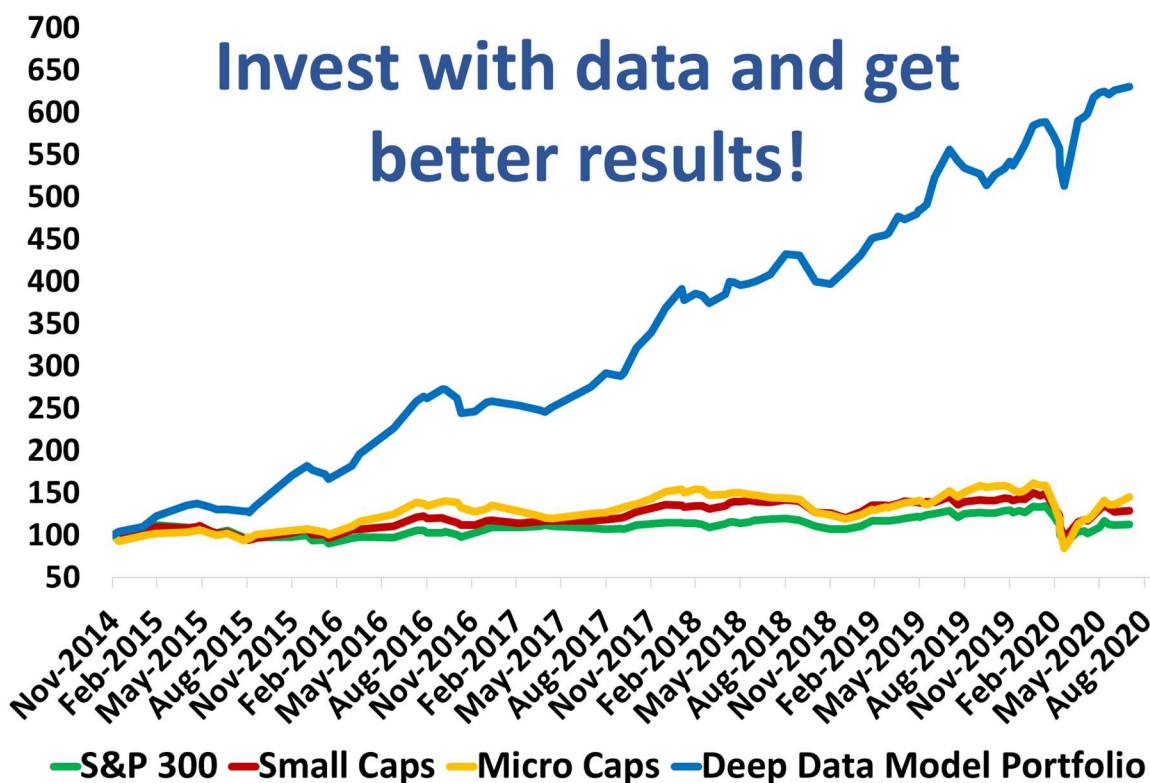


4. **Bank of Queensland (BOQ -0.89%)** > Bank of Queensland Limited (ASX: BOQ) (BOQ) today announced its intention to raise \$200 million through the offer of Capital Notes 2 with the ability to raise more or less (Offer). Capital Notes 2 are fully paid, unsecured, non-cumulative, perpetual, subordinated, convertible notes which will pay, subject to the issue terms and BOQ's discretion, preferred floating rate quarterly distributions which are expected to be fully franked. **ASX**
5. **Coca Cola Amatil (CCL +16.28%)** > Non-binding indicative proposal from CCEP of \$12.75 cash per share for Independent Shareholders by way of a Scheme of Arrangement. TCCC's shares in Amatil proposed to be acquired by CCEP separately, on less favourable terms. Proposal subject to due diligence and agreement of a Scheme Implementation Deed. Amatil's Q3 trading demonstrates continued improvement in volumes where COVID-19 restrictions lift – particularly in Australia and New Zealand. **ASX**
6. **Carnarvon (CVN -3.85%)** > During the quarter, Carnarvon and the Dorado Joint Venture continued the forward momentum towards the development of the landmark Dorado field. The Dorado project is close to finalising the pre-Front End Engineering Design ("pre-FEED") phase as the Joint Venture works towards formally commencing FEED. **ASX**
7. **Karoon Energy (KAR +0.56%)** > Karoon Energy Ltd ("Karoon" or "Company") is pleased to announce that Dr Julian Fowles has been appointed as Chief Executive Officer and Managing Director. Dr Fowles will commence with Karoon immediately following the conclusion of Karoon's annual general meeting on 27 November 2020. **ASX**
8. **Mayne Pharma (MYX -1.54%)** > Mayne Pharma Group Limited (ASX: MYX) is pleased to announce that new clinical data has been presented on TOLSURA® (SUBA®-itraconazole) at IDWeek 2020, being held virtually in the US from October 21st-25th. The conference is attended by over 11,500 doctors and other healthcare professionals. **ASX**
9. **Nick Scali (NCK -5.92%)** > The continued elevated level of sales orders has led to a revision of the Net Profit after Tax ("NPAT") forecast for the first half of FY21. NCK had previously provided guidance in August that NPAT for the first half would be 50-60% more than the previous year. However, even allowing for delays in our supply chain caused by the current reduction of inbound shipping and the reduced availability of containers, the Company now anticipates that first half NPAT for FY21 will be 70-80% more than FY20. **ASX**
10. **Orocobre (ORE +0.75%)** > Over the weekend, Orocobre Limited (ORE:ASX ORL:TSX) (Orocobre or the Company) temporarily ceased operations at the Olaroz lithium facility to undertake cleaning of the site and rotation of staff following positive COVID-19 test results from 35 employees. After successfully following the Orocobre Bio-Security Protocol, operations are expected to recommence early this week and the stoppage is not expected to materially affect operational nor financial results. **ASX**
11. **Westpac Bank (WBC -0.43%)** > Westpac today announced that its cash earnings in 2H20 will be reduced by \$1,220m (after tax) arising from notable items. Statutory net profit will also be reduced by these items. The notable items include new items of \$816m (after tax), combined with the previously announced additional \$404m provision (after tax) for AUSTRAC matters. **ASX**
12. **Zip Industries (Z1P -5.64%)** > Zip is pleased to announce today that it has acquired all of the shares in Sydney-based technology company, Urge Holdings Pty Ltd ("Urge") (the "Urge Acquisition"). Since inception in 2018, the Urge has been helping shoppers find and buy the items they're looking for, driving increased sales, reach and exposure for its retail partners. The Urge's team and its capabilities include expertise in search functionality, optimisation and indexation, all of which will be integrated into Zip's platform globally, beginning with the QuadPay app in the US. **ASX**

Deep Data Analytics

Deep Data Analytics is the brainchild of Mathan Somasundaram, a 25-year veteran of the finance and technology sectors. In an increasingly volatile and uncertain economic and political landscape, Mathan saw the need for a dynamic data-driven investment strategy that can be used to optimise the risk-adjusted returns for investors. Seamlessly combining top-down and bottom-up approaches, the vertically integrated, multi-tiered model has been carefully calibrated over the years to rapidly adapt to evolving macro conditions and thereby ensure an effective and dynamic trade-off between risk and return.

Deep Data Analytics has been used as the focal point of strategy in macro marketing documents to Institutional and High Net Worth clients for over a decade. With successive years of consistent and reliable returns despite major disruptive thematic cycles, Deep Data Analytics is widely recognised as one of the leading integrated investment strategies in the market. And now, with the inclusion of a variety of risk/return investment options and insights, breadth of users from institutional to retail investors have access to cutting-edge analytics at their fingertips.



For more information visit... www.deepdataanalytics.com.au

Or email... info@deepdataanalytics.com.au

US market overnight - Reuters

The S&P 500 and Nasdaq closed modestly higher on Friday in choppy trading, with investors keeping a close eye on negotiations on a U.S. stimulus package that would ease the economic shock caused by the coronavirus pandemic. The Dow ended lower on the day, moving within tight ranges.

Uncertainty over the timeline of the relief legislation has been weighing on Wall Street's major indexes in recent sessions, with all three indexes posting declines for the week.

U.S. House Speaker Nancy Pelosi said it still was possible to get another round of COVID-19 aid before the Nov. 3 election, but that it was up to President Donald Trump to act, including talking to reluctant Senate Republicans, if he wants it.

Trump and Treasury Secretary Steven Mnuchin countered that Pelosi must compromise to get an aid package, saying significant differences remained between the Republican administration and Democrats.

Still the market believes a stimulus deal is going to get done: The only question would be size and timing, analysts said.

The Dow Jones Industrial Average closed 28.09 points lower, or 0.1%, to 28,335.57, the S&P 500 gained 11.9 points, or 0.34%, to 3,465.39 and the Nasdaq Composite added 42.28 points, or 0.37%, to 11,548.28. The communication services sector rose 1.1%, the highest gainer among the major S&P sectors.

"This has been a stimulus-driven market for several weeks -- today is more evidence of that," said Lindsey Bell, chief investment strategist at Ally Invest, in Charlotte, North Carolina.

"The market believes we are getting a stimulus. But it wants to know when it's going to pass because it's going to take time for the money to flow out," she added.

Meanwhile, a record 50 million Americans cast ballots, eclipsing total early voting from the 2016 election.

Trump and Democratic rival Joe Biden debated on Thursday for the last time to persuade the few remaining undecided voters 11 days before their contest, but while the debate was more toned down and substantive, it hardly moved the needle.

Trump still trailed former vice president Biden in national polls after the debate, although the contest is much tighter in some battleground states where the election will likely be decided.

A sharp 10% fall in chipmaker Intel Corp after it reported a drop in margins earlier weighed on the market. Intel's results were pressured as consumers bought cheaper laptops and pandemic-stricken businesses and governments clamped down on data center spending.

The third-quarter earnings season, meanwhile, chugged along, with about 84% of the 135 S&P 500 companies that have reported so far topping quarterly profit estimates, according to Refinitiv data.

Next week's focus will be on results from Big Tech companies Apple Inc, Facebook Inc, Amazon.com Inc and Google-parent Alphabet.

Gilead Sciences Inc rose 0.2% as its antiviral drug remdesivir became the first and only drug approved for treating patients hospitalized with COVID-19 in the United States.

American Express Co fell 3.6% as it missed estimates for third-quarter profit after its customers spent less during the COVID-19 fueled economic slowdown and it set aside money for potential payment defaults.

For the week, the Dow ended down 0.9%, the S&P 500 fell 0.5% and Nasdaq declined 1.1%. Volume on U.S exchanges was 7.79 billion shares, compared with the nearly 9 billion average for the full session over the last 20 trading days.

US Movers and Shakers - CNBC

MARKET MOVERS

S&P NASDAQ DOW EUR ASIA COVID19

TOP

SIVB	SVB Financial G...	3.971%	
FLS	Flowserve Corp	3.928%	
DXCM	DexCom Inc	3.842%	
NCLH	Norwegian Crui...	3.614%	
ALGN	Align Technolo...	3.603%	

BOTTOM

INTC	Intel Corp	10.575%	
RHI	Robert Half Inte...	8.256%	
FTI	TechnipFMC PLC	5.685%	
AAL	American Airlin...	4.183%	
AXP	American Expre...	3.636%	

MARKET MOVERS

S&P NASDAQ DOW EUR ASIA COVID19

TOP

ALGN	Align Technolo...	3.603%	
XLNX	Xilinx Inc	3.344%	
AMD	Advanced Micr...	3.198%	
EBAY	eBay Inc	2.869%	
LULU	Lululemon Athl...	2.533%	

BOTTOM

INTC	Intel Corp	10.575%	
AAL	American Airlin...	4.183%	
VRSN	Verisign Inc	3.397%	
CTXS	Citrix Systems I...	3.107%	
WDC	Western Digital ...	2.841%	

MARKET MOVERS

S&P NASDAQ DOW EUR ASIA COVID19

TOP

UNH	UnitedHealth G...	1.495%	
WBA	Walgreens Boot...	1.413%	
VZ	Verizon Commu...	1.099%	
JPM	JPMorgan Chas...	0.904%	
MRK	Merck & Co Inc	0.783%	

BOTTOM

INTC	Intel Corp	10.575%	
AXP	American Expre...	3.636%	
CVX	Chevron Corp	1.131%	
BA	Boeing Co	1.011%	
HON	Honeywell Inter...	0.741%	

MARKET MOVERS

S&P NASDAQ DOW EUR ASIA COVID19

TOP

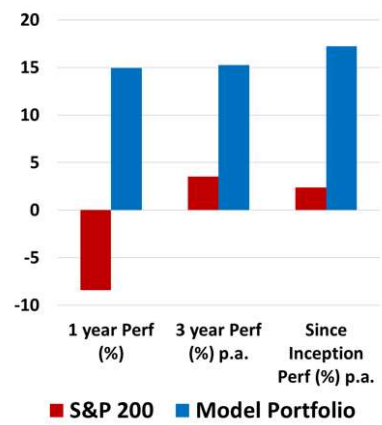
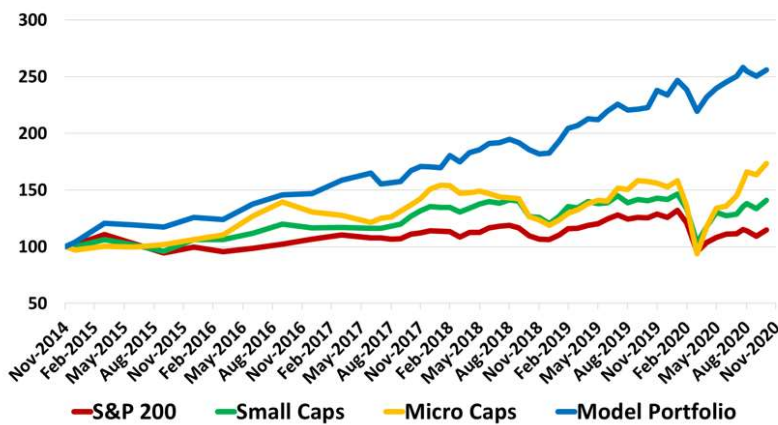
ADPT	Adaptive Biotec...	5.476%	
APLS	Apellis Pharma...	4.161%	
BNTX	BioNTech SE	2.698%	
PFE	Pfizer Inc	2.004%	
CVAC	CureVac NV	1.956%	

BOTTOM

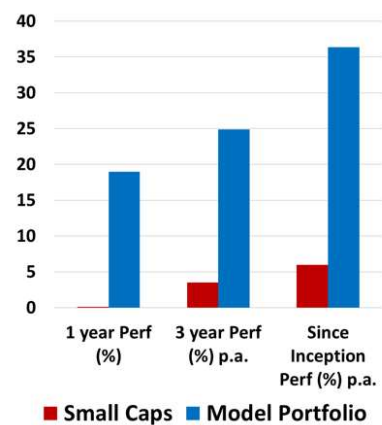
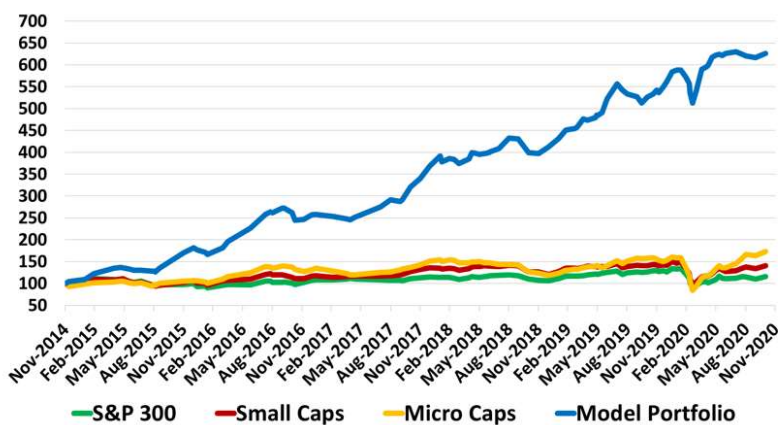
VIR	Vir Biotechnolo...	6.869%	
TBIO	Translate Bio Inc	2.974%	
INO	Inovio Pharmac...	2.58%	
SRNE	Sorrento Thera...	2.416%	
ALNY	Alnylam Pharm...	1.832%	

Deep Data Analytics

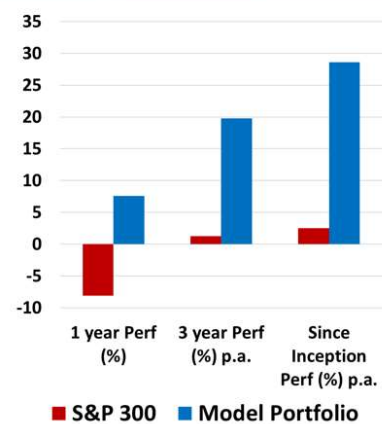
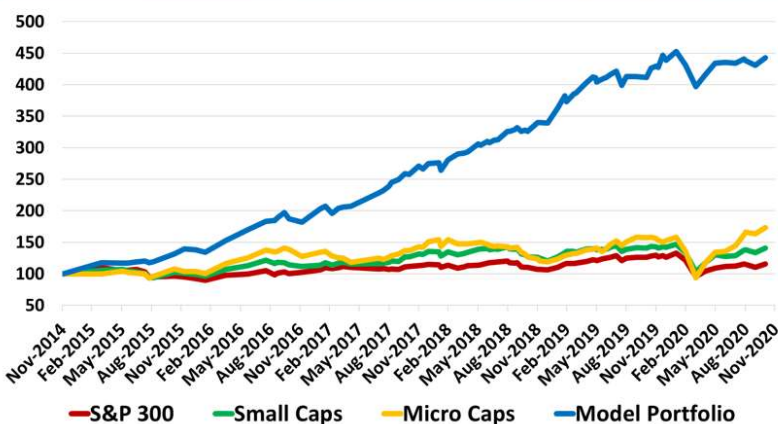
S&P 100 Best 10 with Cash



Small Cap Best 10 with Cash



GARY Best 10 with Cash



For more information visit... www.deepdataanalytics.com.au

Or email... info@deepdataanalytics.com.au

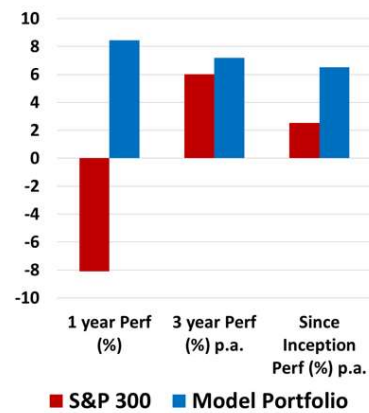
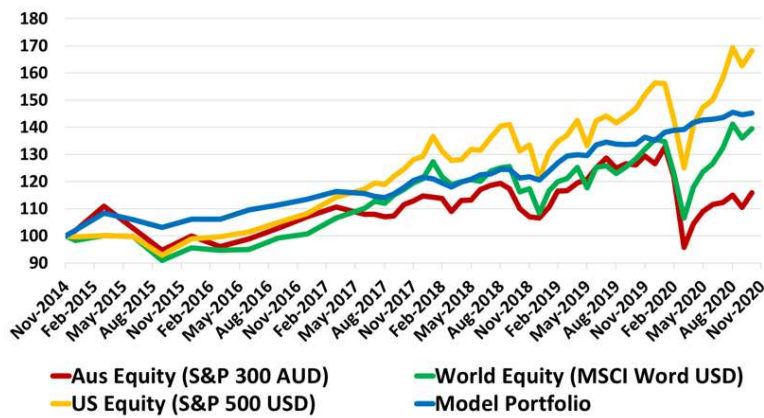
TODAY'S TOP 30 WINNERS AND LOSERS IN S&P 300

Code	Company Name	Market Cap (\$m)	Price (\$)	Daily Price Change (%)	Consensus Target Price (\$)	Consensus Rating	2020 PE	2021 PE	2020 EPS GROWTH	2021 EPS GROWTH	2020 Div Yield	2021 Div Yield	Newsflash
CCL	Coca-Cola Amatil	7783.00	12.50	16.28	9.93	BUY	29.57	24.92	-18.82	18.65	2.08	3.28	CCEP indicative proposal and trading update
INR	Ioneer Ltd	302.79	0.19	5.56	0.50	-	-0.68	-0.26	N/A	-162.01	0.00	0.00	N/A
PLS	Pilbara Min Ltd	890.84	0.42	5.00	0.30	HOLD	-13.13	-31.27	-93.94	58.03	0.00	0.00	N/A
IEL	Idp Education Ltd	5430.34	20.34	4.25	21.00	BUY	115.64	109.72	-34.68	5.40	0.97	0.55	N/A
PBH	Pointsbet Holdings	1830.02	10.98	3.88	12.65	HOLD	-40.85	-33.08	N/A	-23.50	0.00	0.00	N/A
API	Australian Pharm.	524.68	1.11	3.76	1.05	HOLD	17.88	13.31	-42.65	34.30	0.90	5.75	Initial Directors Interest Notice
ILU	Iluka Resources	2164.58	5.31	3.71	9.55	HOLD	12.43	8.80	-36.29	41.24	0.49	5.27	Becoming a substantial holder
MVF	Monash IVF Group Ltd	224.04	0.60	3.48	0.73	BUY	12.74	12.57	-44.41	1.31	2.17	5.04	N/A
RFF	Rural Funds Group	795.14	2.43	3.40	2.43	BUY	15.86	16.45	10.98	-3.59	4.42	4.64	N/A
CTD	Corp Travel Limited	2368.75	18.00	3.39	18.70	BUY	63.71	285.53	-69.19	-77.69	1.00	0.08	Ceasing to be a substantial holder for CTD
GEM	G8 Education Limited	899.45	1.11	3.26	1.38	BUY	13.18	20.34	-41.52	-35.22	0.00	3.23	N/A
CSR	CSR Limited	2227.91	4.72	2.83	4.08	HOLD	20.09	17.97	-35.95	11.79	4.22	3.05	N/A
MIN	Mineral Resources.	4697.96	25.61	2.81	26.00	HOLD	13.56	8.39	95.65	61.66	3.09	5.05	N/A
LYC	Lynas Corporation	2577.08	2.94	2.80	3.35	BUY	-451.61	55.47	-113.75	914.13	0.00	0.00	N/A
SIG	Sigma Health Ltd	572.05	0.56	2.78	0.69	BUY	43.80	15.73	-70.42	178.53	3.18	0.54	N/A
SGM	Sims Limited	1814.31	9.25	2.66	9.50	HOLD	-32.13	43.88	-136.83	173.22	1.00	0.84	N/A
NIC	Nickel Mines Limited	2074.90	1.00	2.56	1.33	BUY	13.84	9.12	N/A	51.81	1.70	5.19	N/A
VUK	Virgin Money Uk PLC	1554.22	1.67	2.46	1.80	HOLD	15.11	9.00	-76.82	67.90	0.00	0.88	N/A
PNV	Polynovo Limited	1632.89	2.53	2.43	2.45	BUY	-606.71	506.00	10.71	219.90	0.00	0.00	N/A
CWP	Cedar Woods Prop.	453.11	5.76	2.31	5.80	HOLD	20.87	15.08	-57.11	38.41	3.13	3.56	N/A
IGO	IGO Limited	2587.69	4.48	2.28	5.30	HOLD	16.73	20.22	99.92	-17.23	2.36	2.49	N/A
GXY	Galaxy Resources	552.80	1.38	2.22	1.12	HOLD	-26.21	-31.81	36.33	17.60	0.00	0.00	N/A
PGH	Pact Group Hldgs Ltd	811.82	2.41	2.12	2.78	HOLD	12.93	11.75	-16.68	10.07	0.00	3.01	N/A
IAG	Insurance Australia	1185.47	4.94	2.07	5.80	BUY	34.75	16.05	-64.46	116.52	2.11	4.41	N/A
AVH	Avita Therapeutics	507.92	6.77	1.96	15.00	BUY	-15.27	-9.85	-23.15	-55.05	0.00	0.00	N/A
IPL	Incitec Pivot	4059.25	2.13	1.91	2.40	BUY	18.75	15.58	30.96	20.40	1.40	3.05	N/A
GPT	GPT Group	8161.82	4.27	1.91	4.35	BUY	16.68	14.04	-20.58	18.83	4.53	5.54	N/A
CNU	Chorus Limited	3513.62	8.01	1.91	-	-	71.43	74.92	-6.84	-4.67	2.81	2.93	N/A
VRL	Village Roadshow Ltd	421.85	2.20	1.85	2.20	HOLD	-12.22	-18.15	-254.28	32.67	0.45	0.00	N/A
AAC	Australian Agricult.	657.02	1.11	1.83	1.40	STRONG BUY	-35.81	-31.71	13.89	-12.90	0.00	0.00	N/A

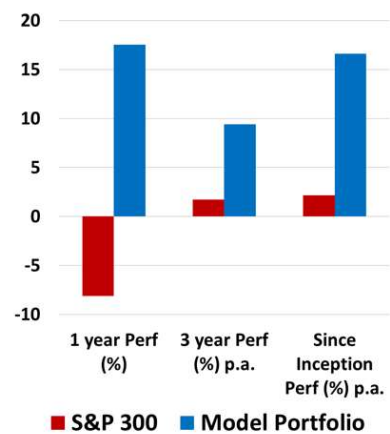
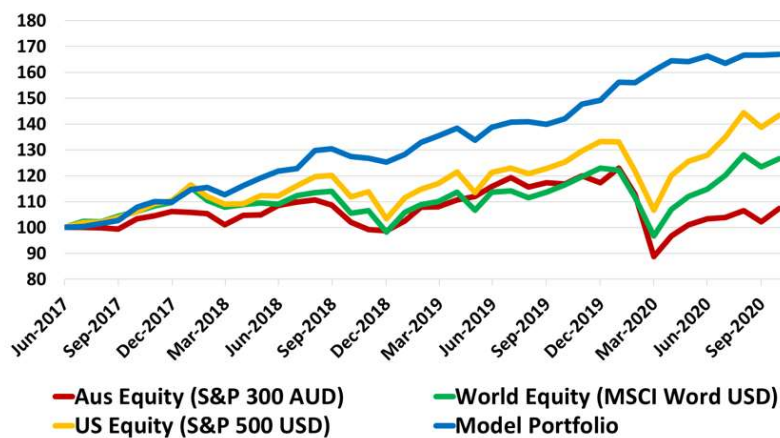
Code	Company Name	Market Cap (\$m)	Price (\$)	Daily Price Change (%)	Consensus Target Price (\$)	Consensus Rating	2020 PE	2021 PE	2020 EPS GROWTH	2021 EPS GROWTH	2020 Div Yield	2021 Div Yield	Newsflash
TPW	Temple & Webster Ltd	1282.82	9.87	-7.32	12.60	BUY	141.00	51.30	577.64	174.86	0.00	0.00	N/A
ASB	Austal Limited	1139.80	2.95	-6.94	4.38	BUY	12.35	12.23	49.48	1.01	2.37	3.03	N/A
DRR	Deterra Royalties	2430.93	4.30	-6.52	-	-	N/A	N/A	N/A	N/A	N/A	N/A	N/A
CCX	City Chic Collective	635.68	2.60	-6.47	3.70	BUY	32.60	28.65	-2.15	13.79	0.00	0.72	N/A
KGN	Kogan.Com Ltd	2321.57	20.61	-6.23	22.00	BUY	69.91	42.88	59.93	63.03	1.08	1.70	N/A
BBN	Baby Bunting Grp Ltd	570.21	4.20	-6.04	5.39	BUY	28.38	21.82	30.40	30.07	2.30	3.15	Appendix 2A - Employee Share Plan Gift Offer
NCK	Nick Scali Limited	724.95	8.42	-5.92	9.20	BUY	17.35	13.29	-5.88	30.49	5.32	6.45	Trading Update
AMI	Aurelia Metals Ltd	458.84	0.50	-5.71	0.79	STRONG BUY	10.17	7.10	-9.87	43.15	1.01	3.23	N/A
EML	EML Payments Ltd	1334.26	3.48	-5.69	4.25	BUY	40.12	33.40	86.84	20.12	0.00	0.00	N/A
ZIP	Zip Co Ltd.	3487.12	6.36	-5.64	8.24	HOLD	-63.20	-58.62	-262.63	-7.82	0.00	0.00	Acquisition of The Urge and other Share Issuances
AX1	Accent Group Ltd	1002.45	1.76	-4.86	1.85	BUY	16.53	15.89	8.31	3.99	3.42	5.13	N/A
APE	Eagers Automotive	3132.01	11.61	-4.76	12.75	BUY	31.23	21.98	-6.59	42.05	0.90	2.87	N/A
KMD	Kathmandu Hold Ltd	854.35	1.15	-4.56	1.25	BUY	18.37	15.64	-49.59	17.44	1.08	3.65	N/A
AFG	Aust Finance Grp	577.02	2.06	-4.19	2.11	BUY	13.45	14.43	11.33	-6.80	4.14	4.58	N/A
CVN	Carnarvon Petroleum	406.87	0.25	-3.85	0.35	BUY	-83.33	-58.82	52.61	-41.67	0.00	0.00	Quarterly Activities Report and Appendix 5B
WAF	West African Res Ltd	858.58	0.95	-3.57	1.30	BUY	9.36	2.62	1446.67	257.10	0.00	0.00	Quarterly Conference Call Details
HLS	Healus	2286.44	3.54	-3.54	3.78	HOLD	33.69	20.44	-33.18	64.81	1.27	2.02	N/A
FXL	FlexiGroup Limited	559.65	1.09	-3.54	1.36	HOLD	10.50	10.28	-47.24	2.18	4.47	2.43	N/A
RSG	Resolute Mining	938.31	0.82	-3.53	1.50	BUY	9.43	4.81	35.70	95.93	2.16	2.37	N/A
ARB	ARB Corporation.	2646.19	31.59	-3.48	30.25	HOLD	52.25	33.80	-16.12	54.60	0.99	1.56	N/A
EOS	Electro Optic Sys.	897.48	5.80	-3.33	7.67	STRONG BUY	32.04	24.22	-6.70	32.32	0.00	0.00	N/A
RED	Red 5 Limited	591.17	0.29	-3.33	0.50	BUY	41.43	-72.50	-41.67	-157.14	0.00	0.00	N/A
RRL	Regis Resources	2378.41	4.50	-3.23	-	HOLD	10.72	8.21	22.23	30.69	3.85	3.98	N/A
MYS	MyState Limited	375.49	3.95	-3.19	4.50	BUY	11.65	10.20	-0.59	14.26	6.31	6.69	Change of Directors Interest Notice
SUL	Super Ret Rep Ltd	2705.17	11.60	-3.17	11.53	BUY	15.83	15.33	-3.11	3.23	1.51	4.08	N/A
SBM	St Barbara Limited	2003.21	2.75	-3.17	4.05	BUY	12.37	8.55	-19.77	44.77	3.10	2.66	N/A
IFM	Infomedia Ltd	605.98	1.57	-3.10	2.00	BUY	28.89	28.37	6.74	1.85	2.64	2.59	N/A
ECX	Eclixp Group Ltd	517.81	1.57	-3.09	1.70	BUY	12.56	11.83	17.04	6.20	0.00	2.02	N/A
PMV	Premier Investments	3579.24	21.88	-2.97	20.50	HOLD	25.74	23.28	5.48	10.56	2.38	3.28	N/A
BRG	Breville Group Ltd	3733.34	26.08	-2.94	27.46	HOLD	43.93	40.29	13.97	9.03	1.38	1.70	N/A

Deep Data Analytics

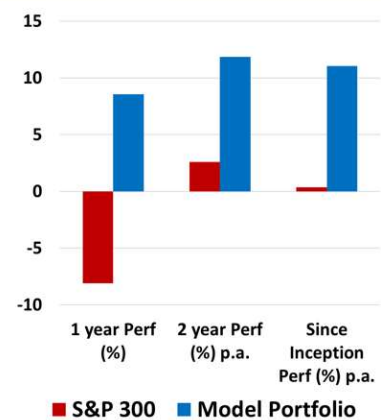
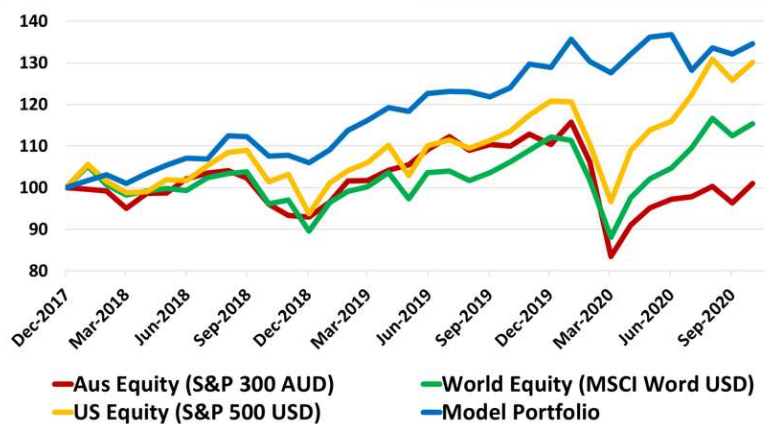
Multi Asset ETF Model



Global Tech/Health ETF Model



ESG ETF Model



For more information visit... www.deepdataanalytics.com.au

Or email... info@deepdataanalytics.com.au

CHECKING S&P 300 BY THE SECTOR

➤ Energy stocks:

Code	Company Name	Market Cap (\$m)	Price (\$)	Daily Price Change (%)	Consensus Target Price (\$)	Consensus Rating	2020 PE	2021 PE	2020 EPS GROWTH	2021 EPS GROWTH	2020 Div Yield	2021 Div Yield	Newsflash
ALD	Ampol Limited	6452.43	25.98	0.54	27.87	BUY	31.70	17.19	-37.49	84.39	1.73	3.37	N/A
BPT	Beach Energy Limited	3045.58	1.34	0.00	1.80	BUY	6.86	8.76	-21.78	-21.62	1.45	1.47	N/A
COE	Cooper Energy Ltd	585.59	0.36	-1.39	0.50	BUY	-95.69	63.85	-192.75	249.87	0.00	0.00	N/A
CVN	Camarvon Petroleum	406.87	0.25	-3.85	0.35	BUY	-83.33	-58.82	52.61	-41.67	0.00	0.00	Quarterly Activities Report and Appendix 5B
FAR	FAR Ltd	109.77	0.01	0.00	0.03	BUY	-16.42	-11.00	33.00	-49.25	0.00	0.00	Resignation of Director
KAR	Karooon Energy Ltd	495.36	0.90	0.56	1.38	BUY	-6.23	-66.67	-32.62	90.66	0.00	0.00	Karooon Energy Appoints New CEO/MD
NHC	New Hope Corporation	932.24	1.11	-0.89	1.40	HOLD	6.88	141.76	-63.03	-95.15	7.45	0.96	N/A
ORG	Origin Energy	7678.88	4.36	0.00	6.24	BUY	7.45	18.57	0.31	-59.87	6.44	4.83	N/A
OSH	Oil Search Ltd	6025.77	2.92	0.69	3.65	BUY	155.97	24.70	-94.13	531.53	0.07	1.23	N/A
SOL	Soul Pattinson (W.H)	6102.19	25.13	-1.41	24.16	BUY	29.11	34.19	-42.83	-14.86	2.24	2.31	Change of Directors Interest Notice
STO	Santos Ltd	10998.59	5.30	0.38	6.30	BUY	25.44	15.87	-60.84	60.27	1.28	1.57	N/A
SKY	Senex Energy Limited	474.50	0.33	0.00	0.43	BUY	54.17	23.41	7.91	131.33	0.00	0.00	Senex and Alinta Energy sign new gas sales agreement
VEA	Viva Energy Group	2843.55	1.71	-2.57	2.44	BUY	-167.81	19.28	-111.62	970.47	3.75	3.86	Daily share buy-back notice - Appendix 3E
WHC	Whitehaven Coal	1073.95	1.01	-2.88	1.86	BUY	36.69	-14.60	-94.87	-351.25	1.45	0.00	N/A
WOR	Worley Limited	5523.51	10.50	-0.76	11.70	BUY	14.04	15.35	25.61	-8.54	3.61	4.21	N/A
WPL	Woodside Petroleum	17781.93	18.62	0.76	23.55	BUY	26.89	19.28	-60.20	39.45	3.01	4.09	N/A

➤ Material (Ex Mining) stocks:

Code	Company Name	Market Cap (\$m)	Price (\$)	Daily Price Change (%)	Consensus Target Price (\$)	Consensus Rating	2020 PE	2021 PE	2020 EPS GROWTH	2021 EPS GROWTH	2020 Div Yield	2021 Div Yield	Newsflash
ABC	Adbri Limited	2067.68	3.13	-1.26	2.45	HOLD	20.28	21.24	-17.53	-4.48	3.03	2.96	N/A
AMC	Amcor PLC	13750.91	15.17	-1.37	16.20	BUY	16.51	15.63	2.04	5.65	4.73	4.44	N/A
BKW	Brickworks Limited	2773.47	18.17	-1.62	20.20	BUY	16.95	27.79	-35.27	-38.99	3.19	3.29	N/A
BLD	Boral Limited	5809.60	4.73	-0.21	4.30	HOLD	27.97	29.88	-57.97	-6.39	2.11	0.86	N/A
CSR	CSR Limited	2227.91	4.72	2.83	4.08	HOLD	20.09	17.97	-35.95	11.79	4.22	3.05	N/A
FBU	Fletcher Building	3255.81	3.94	-0.25	3.91	BUY	64.46	18.75	-85.07	243.83	0.70	2.69	N/A
IPL	Incitec Pivot	4059.25	2.13	1.91	2.40	BUY	18.75	15.58	30.96	20.40	1.40	3.05	N/A
JHX	James Hardie Indust	15981.73	35.66	-0.94	39.25	BUY	29.57	27.50	21.15	7.53	0.77	0.00	N/A
NUF	Nufarm Limited	1423.86	3.75	0.00	4.80	BUY	-42.42	34.78	-137.02	221.98	0.18	0.77	N/A
ORA	Orora Limited	2626.11	2.74	0.00	2.67	HOLD	16.45	17.83	-26.79	-7.75	22.29	4.23	Daily share buy-back notice - Appendix 3E
ORI	Orica Limited	6494.06	16.16	1.00	19.00	BUY	19.87	17.35	-14.86	14.51	2.39	3.16	N/A
PGH	Pact Group Hldgs Ltd	811.82	2.41	2.12	2.78	HOLD	12.93	11.75	-16.68	10.07	0.00	3.01	N/A

➤ Gold stocks:

Code	Company Name	Market Cap (\$m)	Price (\$)	Daily Price Change (%)	Consensus Target Price (\$)	Consensus Rating	2020 PE	2021 PE	2020 EPS GROWTH	2021 EPS GROWTH	2020 Div Yield	2021 Div Yield	Newsflash
ALK	Alkane Resources Ltd	782.94	1.31	-0.76	1.05	BUY	52.22	32.63	-37.46	60.06	0.00	0.00	N/A
BGL	Belleveue Gold Ltd	1049.87	1.22	-2.80	1.48	STRONG BUY	-83.79	-151.88	-31.82	44.83	0.00	0.00	N/A
DCN	Dacian Gold Ltd	219.82	0.39	-2.53	0.41	HOLD	-4.01	6.47	-526.22	161.98	0.00	0.00	N/A
DEG	De Grey Mining	1503.79	1.16	-1.69	1.06	STRONG BUY	N/A	N/A	N/A	N/A	0.00	0.00	N/A
EVN	Evolution Mining Ltd	9704.92	5.63	-0.88	5.50	HOLD	25.53	18.85	67.27	35.46	2.18	2.72	N/A
GOR	Gold Road Res Ltd	1218.70	1.39	0.36	2.00	BUY	15.17	11.80	10939.76	28.51	0.72	2.15	N/A
NCM	Newcrest Mining	25076.45	30.52	-0.62	35.75	HOLD	25.14	14.66	8.49	71.48	0.87	1.21	N/A
NST	Northern Star	11707.20	15.65	-0.95	16.23	HOLD	31.24	16.76	72.00	86.45	0.95	1.46	N/A
PRU	Perseus Mining Ltd	1556.58	1.26	-1.18	1.65	BUY	23.60	15.85	1376.94	48.96	0.00	0.16	Appendix 2A (exercise of performance rights)
RED	Red 5 Limited	591.17	0.29	-3.33	0.50	BUY	41.43	-72.50	-41.67	-157.14	0.00	0.00	N/A
RMS	Ramelius Resources	1605.51	1.97	-1.01	2.40	BUY	15.42	8.42	206.99	83.15	0.51	1.78	N/A
RRL	Regis Resources	2378.41	4.50	-3.23	-	HOLD	10.72	8.21	22.23	30.69	3.85	3.98	N/A
RSG	Resolute Mining	938.31	0.82	-3.53	1.50	BUY	9.43	4.81	35.70	95.93	2.16	2.37	N/A
SAR	Saracen Mineral	6557.21	5.84	-1.35	6.10	HOLD	26.49	17.50	82.89	51.37	0.22	1.10	N/A
SBM	St Barbara Limited	2003.21	2.75	-3.17	4.05	BUY	12.37	8.55	-19.77	44.77	3.10	2.66	N/A
SLR	Silver Lake Resource	1947.47	2.22	0.45	2.64	BUY	14.56	10.12	207.03	43.87	0.00	0.00	N/A
SSR	SSR Mining Inc.	441.88	26.55	-2.60	-	-	N/A	N/A	N/A	N/A	N/A	N/A	N/A
WAF	West African Res Ltd	858.58	0.95	-3.57	1.30	BUY	9.36	2.62	1446.67	257.10	0.00	0.00	Quarterly Conference Call Details
WGX	Westgold Resources.	1167.64	2.80	1.08	3.20	STRONG BUY	28.48	10.01	495.94	184.42	0.00	0.24	N/A

➤ Mining (Ex Gold) stocks:

Code	Company Name	Market Cap (\$m)	Price (\$)	Daily Price Change (%)	Consensus Target Price (\$)	Consensus Rating	2020 PE	2021 PE	2020 EPS GROWTH	2021 EPS GROWTH	2020 Div Yield	2021 Div Yield	Newsflash
AMI	Aurelia Metals Ltd	458.84	0.50	-5.71	0.79	STRONG BUY	10.17	7.10	-9.87	43.15	1.01	3.23	N/A
AWC	Alumina Limited	4309.00	1.47	-1.01	2.00	BUY	18.78	17.13	-54.11	9.62	4.83	5.22	N/A
BHP	BHP Group Limited	106050.65	35.73	-0.75	40.00	BUY	14.19	11.70	-10.20	21.27	4.76	5.77	N/A
BSL	BlueScope Steel Ltd	8020.21	16.00	0.50	16.00	BUY	22.88	21.78	-60.76	5.07	0.76	0.83	N/A
CIA	Champion Iron Ltd	1433.62	3.07	1.32	3.90	BUY	9.51	4.89	-16.87	94.63	0.00	0.00	N/A
CMM	Capricorn Metals	595.08	1.73	-0.29	1.70	HOLD	-80.23	55.65	N/A	244.19	0.00	0.00	N/A
DRR	Deterra Royalties	2430.93	4.30	-6.52	-	-	N/A	N/A	N/A	N/A	N/A	N/A	N/A
FMG	Fortescue Metals Grp	51480.29	16.61	-0.66	16.00	HOLD	7.74	6.74	54.22	14.80	10.09	10.67	N/A
GXY	Galaxy Resources	552.80	1.38	2.22	1.12	HOLD	-26.21	-31.81	36.33	17.60	0.00	0.00	N/A
IGO	IGO Limited	2587.69	4.48	2.28	5.30	HOLD	16.73	20.22	99.92	-17.23	2.36	2.49	N/A
ILL	Iluka Resources	2164.58	5.31	3.71	9.55	HOLD	12.43	8.80	-36.29	41.24	0.49	5.27	Becoming a substantial holder
IMD	Imdex Limited	523.32	1.31	-1.14	1.60	BUY	21.45	28.79	-16.29	-25.48	2.38	1.37	Change of Directors Interest Notice
INR	Ioneer Ltd	302.79	0.19	5.56	0.50	-	-0.68	-0.26	N/A	-162.01	0.00	0.00	N/A
JMS	Jupiter Mines.	548.52	0.29	1.79	0.40	BUY	5.70	17.81	N/A	-68.00	21.93	7.48	N/A
LYC	Lynas Corporation	2577.08	2.94	2.80	3.35	BUY	-451.61	55.47	-113.75	914.13	0.00	0.00	N/A
MAH	Macmahon Holdings	527.97	0.24	-2.04	0.37	STRONG BUY	8.57	7.62	-91.04	12.50	2.08	3.05	N/A
MGX	Mount Gibson Iron	806.42	0.68	0.00	0.97	STRONG BUY	7.43	6.63	15.82	12.02	4.41	5.15	N/A
MIN	Mineral Resources.	4697.96	25.61	2.81	26.00	HOLD	13.56	8.39	95.65	61.66	3.09	5.05	N/A
MID	MACA Limited	223.79	0.83	-0.60	1.31	STRONG BUY	7.48	6.34	48.00	18.02	5.72	6.02	N/A
NIC	Nickel Mines Limited	2074.90	1.00	2.56	1.33	BUY	13.84	9.12	N/A	51.81	1.70	5.19	N/A
ORE	Orocobre Limited	918.60	2.69	0.75	2.85	HOLD	-22.89	-30.10	-150.33	23.93	0.00	0.00	Operational Update
OZL	OZ Minerals	5237.75	15.88	0.44	15.60	BUY	27.51	15.40	9.74	78.66	1.34	1.50	N/A
PLS	Pilbara Min Ltd	890.84	0.42	5.00	0.30	HOLD	-13.13	-31.27	-93.94	58.03	0.00	0.00	N/A
PRN	Perenti Global Ltd	793.10	1.15	1.77	1.68	BUY	7.46	7.21	-2.71	3.37	5.70	5.99	N/A
RIO	Rio Tinto Limited	35414.03	94.66	-0.78	103.75	BUY	9.89	10.14	0.56	-2.43	6.67	6.62	N/A
S32	South32 Limited	10758.71	2.21	-0.45	2.73	BUY	41.13	17.05	-81.90	141.22	1.82	2.30	Daily share buy-back notice - Appendix 3E
SFR	Sandfire Resources	805.70	4.49	-0.66	5.50	BUY	9.18	7.58	-27.98	21.10	3.16	3.57	AUR: Sams Creek Drilling To Commence
SGM	Sims Limited	1814.31	9.25	2.66	9.50	HOLD	-32.13	43.88	-136.83	173.22	1.00	0.84	N/A
WSA	Western Areas Ltd	668.41	2.39	-1.65	2.65	BUY	14.71	24.44	188.76	-39.79	1.01	0.88	N/A

➤ Industrial stocks:

Code	Company Name	Market Cap (\$m)	Price (\$)	Daily Price Change (%)	Consensus Target Price (\$)	Consensus Rating	2020 PE	2021 PE	2020 EPS GROWTH	2021 EPS GROWTH	2020 Div Yield	2021 Div Yield	Newsflash
AIA	Auckland Internation	10131.15	6.84	-0.58	6.73	HOLD	65.92	-1882.23	-52.52	-103.50	0.38	0.00	N/A
ALQ	ALS Ltd	4694.00	9.89	1.64	9.29	BUY	25.42	28.43	7.22	-10.58	1.69	1.65	N/A
ALX	Atlas Arteria	5974.68	6.22	-0.16	7.00	BUY	51.53	17.35	-60.90	196.98	2.40	5.69	N/A
AMA	AMA Group Limited	546.76	0.75	0.00	0.80	BUY	106.43	35.82	-87.15	197.14	0.11	0.00	N/A
ASB	Austal Limited	1139.80	2.95	-6.94	4.38	BUY	12.35	12.23	49.48	1.01	2.37	3.03	N/A
AZJ	Aurizon Holdings Ltd	7549.95	4.03	0.75	5.40	BUY	14.95	15.45	20.99	-3.22	6.69	6.50	Appendix 3Y change of Directors interest notice
BIN	Bingo Industries Ltd	1752.92	2.64	-1.49	2.56	BUY	33.46	42.66	-6.08	-21.56	1.17	0.97	N/A
BXB	Brambles Limited	15416.49	10.24	-0.19	12.25	BUY	21.82	20.87	-17.65	4.59	4.07	3.02	Appendix 2A
CIM	Cimic Group Ltd	7089.18	22.51	0.36	29.30	BUY	10.97	10.60	-16.75	3.52	3.09	5.81	N/A
CWY	Cleanaway Waste Ltd	4506.70	2.16	-1.37	2.45	BUY	31.20	27.80	-1.68	12.25	1.77	2.01	N/A
DOW	Downer EDI Limited	3352.18	4.81	0.63	5.29	BUY	17.26	13.10	-43.40	31.82	3.05	3.16	N/A
EHL	Emeco Holdings	427.08	0.78	-1.27	1.19	BUY	3.82	5.89	10.52	-35.17	0.00	0.00	N/A
EOS	Electro Optic Sys.	897.48	5.80	-3.33	7.67	STRONG BUY	32.04	24.22	-6.70	32.32	0.00	0.00	N/A
GWA	GWA Group Ltd	776.74	2.92	-0.68	2.60	HOLD	15.92	19.34	-8.14	-17.66	4.59	3.71	N/A
IPH	IPH Limited	1511.48	6.96	-0.43	8.78	BUY	19.13	19.01	20.76	0.64	4.11	4.21	N/A
MMS	McMillan Shakespeare	716.55	9.29	0.32	9.90	HOLD	10.60	10.31	-16.28	2.75	6.22	6.08	N/A
MND	Monadelphous Group	962.91	10.20	0.29	11.00	BUY	26.34	17.64	-41.75	49.33	2.80	4.11	N/A
NWH	NRW Holdings Limited	955.78	2.26	0.89	2.76	STRONG BUY	10.86	9.73	64.99	11.53	2.04	3.08	N/A
PET	Phoslock Env Tec Ltd	153.13	0.25	0.00	-	-	N/A	N/A	N/A	N/A	N/A	N/A	Business Update
QAN	Qantas Airways	8581.50	4.58	0.66	4.83	BUY	-89.37	-10.40	-108.78	-759.24	0.99	0.46	N/A
QUB	Qube Holdings Ltd	5344.60	2.76	-1.78	3.08	BUY	42.82	46.15	-16.03	-7.21	1.80	1.69	N/A
RWC	Reliance Worldwide	3270.99	4.17	0.72	4.33	HOLD	26.24	21.07	-17.70	24.55	1.87	2.25	N/A
SIQ	Smartgrp Corporation	775.67	5.87	0.51	6.93	HOLD	12.46	11.44	-24.20	8.92	5.66	6.09	N/A
SSM	Service Stream	868.69	2.12	0.00	2.55	STRONG BUY	14.88	15.05	1.06	-1.17	4.31	4.43	N/A
SVW	Seven Group Holdings	6990.77	20.40	-0.97	21.35	BUY	15.93	15.72	-6.33	1.32	1.99	2.22	N/A
SYD	SYD Airport	16165.21	5.97	-0.33	6.14	HOLD	-65.45	964.46	-154.87	106.79	0.00	1.98	N/A
TCL	Transurban Group	38284.08	13.85	-1.00	14.11	HOLD	392.02	#####	-75.50	-101.81	3.37	2.87	N/A

➤ Consumer stocks:

Code	Company Name	Market Cap (\$m)	Price (\$)	Daily Price Change (%)	Consensus Target Price (\$)	Consensus Rating	2020 PE	2021 PE	2020 EPS GROWTH	2021 EPS GROWTH	2020 Div Yield	2021 Div Yield	Newsflash
ALG	Ardentleisuregrppltd	350.19	0.73	0.00	0.70	BUY	-6.94	-5.35	-406.01	-29.69	0.00	0.00	N/A
ALL	Aristocrat Leisure	20567.51	31.67	-1.68	32.30	BUY	43.03	27.10	-44.50	58.80	0.13	1.39	N/A
APE	Eagers Automotive	3132.01	11.61	-4.76	12.75	BUY	31.23	21.98	-6.59	42.05	0.90	2.87	N/A
ARB	ARB Corporation.	2646.19	31.59	-3.48	30.25	HOLD	52.25	33.80	-16.12	54.60	0.99	1.56	N/A
AX1	Accent Group Ltd	1002.45	1.76	-4.85	1.85	BUY	16.53	15.89	8.31	3.99	3.42	5.13	N/A
BAP	Bapcor Limited	2749.24	7.91	-2.35	8.65	BUY	27.91	23.81	-15.93	17.20	1.45	2.20	N/A
BBN	Baby Bunting Grp Ltd	570.21	4.20	-6.04	5.39	BUY	28.38	21.82	30.40	30.07	2.30	3.15	Appendix 2A - Employee Share Plan Gift Offer
BRG	Breville Group Ltd	3733.34	26.08	-2.94	27.46	HOLD	43.93	40.29	13.97	9.03	1.38	1.70	N/A
CCX	City Chic Collective	635.68	2.60	-6.47	3.70	BUY	32.60	28.65	-2.15	13.79	0.00	0.72	N/A
CKF	Collins Foods Ltd	1225.27	10.29	-2.09	10.65	BUY	30.53	26.26	-14.03	16.27	1.25	2.02	N/A
CTD	Corp Travel Limited	2368.75	18.00	3.39	18.70	BUY	63.71	285.53	-69.19	-77.69	1.00	0.08	Ceasing to be a substantial holder for CTD
CWN	Crown Resorts Ltd	5898.05	8.63	-0.92	10.18	BUY	37.74	399.54	-57.89	-90.56	4.11	4.39	N/A
DMP	Domino Pizza Enterpr	7588.10	86.70	-1.14	77.30	HOLD	50.47	42.99	3.16	17.39	1.32	1.65	N/A
FLT	Flight Centre Travel	2663.96	13.18	-1.49	14.30	HOLD	-9.08	-14.90	-165.47	39.08	0.00	0.00	N/A
GEM	G8 Education Limited	899.45	1.11	3.26	1.38	BUY	13.18	20.34	-41.52	-35.22	0.00	3.23	N/A
GUD	G.U.D. Holdings	1146.55	13.07	-0.91	12.80	HOLD	22.35	19.72	-16.56	13.34	3.57	3.50	N/A
HVN	Harvey Norman	5818.85	4.59	-1.71	5.05	BUY	13.50	11.64	9.97	15.98	4.54	6.53	N/A
IEL	Idp Education Ltd	5430.34	20.34	4.25	21.00	BUY	115.64	109.72	-34.68	5.40	0.97	0.55	N/A
IVC	InvoCare Limited	1505.43	10.51	0.57	10.75	HOLD	39.23	27.55	-45.06	42.39	2.57	3.02	N/A
JBH	JB Hi-Fi Limited	5839.52	49.51	-2.60	47.00	HOLD	17.50	17.57	34.77	-0.38	3.53	3.78	N/A
JIN	Jumbo Interactive	741.89	11.70	-1.52	13.89	BUY	29.60	24.89	-5.72	18.89	2.79	2.82	N/A
KGN	Kogan.Com Ltd	2321.57	20.61	-6.23	22.00	BUY	69.91	42.88	59.93	63.03	1.08	1.70	N/A
KMD	Kathmandu Hold Ltd	854.35	1.15	-4.56	1.25	BUY	18.37	15.64	-49.59	17.44	1.08	3.65	N/A
LOV	Lovisa Holdings Ltd	931.68	8.50	-1.96	7.83	HOLD	20.79	40.67	18.57	-48.88	0.50	1.24	N/A
NCK	Nick Scall Limited	724.95	8.42	-5.92	9.20	BUY	17.35	13.29	-5.88	30.49	5.32	6.45	Trading Update
PBH	Pointsbet Holdings	1830.02	10.98	3.88	12.65	HOLD	-40.85	-33.08	N/A	-23.50	0.00	0.00	N/A
PMV	Premier Investments	3579.24	21.88	-2.97	20.50	HOLD	25.74	23.28	5.48	10.56	2.38	3.28	N/A
RDC	Redcape Hotel Group	505.26	0.93	1.09	1.09	STRONG BUY	22.02	12.17	-46.15	80.95	5.08	7.51	N/A
SGR	The Star Ent Grp	3436.77	3.56	-1.39	3.90	BUY	34.04	34.23	-56.87	-0.55	3.00	0.00	N/A
SKC	Skycity Ent Grp Ltd	2136.18	2.78	-1.07	3.52	STRONG BUY	38.36	32.40	-68.66	18.37	3.34	1.74	N/A
SLK	Sealink Travel Grp	1292.92	5.84	-1.35	6.08	BUY	33.87	22.29	-27.44	51.95	1.83	2.25	N/A
SUL	Super Ret Rep Ltd	2705.17	11.60	-3.17	11.53	BUY	15.83	15.33	-3.11	3.23	1.51	4.08	N/A
TAH	TABCORP Holdings Ltd	7671.30	3.43	-0.87	3.64	HOLD	25.48	23.21	-31.81	9.79	3.47	2.34	N/A
TPW	Temple & Webster Ltd	1282.82	9.87	-7.32	12.60	BUY	141.00	51.30	577.64	174.86	0.00	0.00	N/A
WEB	Webjet Limited	1383.13	4.07	-0.25	3.70	HOLD	86.82	-21.88	-89.74	-496.76	1.08	0.00	N/A
WES	Wesfarmers Limited	53199.78	46.91	-0.02	48.70	HOLD	26.58	26.95	1.42	-1.34	3.18	3.28	N/A

➤ Staple stocks:

Code	Company Name	Market Cap (\$m)	Price (\$)	Daily Price Change (%)	Consensus Target Price (\$)	Consensus Rating	2020 PE	2021 PE	2020 EPS GROWTH	2021 EPS GROWTH	2020 Div Yield	2021 Div Yield	Newsflash
AZM	The A2 Milk Company	10730.44	14.43	-0.14	16.35	HOLD	29.38	28.78	27.90	2.09	0.00	0.00	N/A
AAC	Australian Agricult.	657.02	1.11	1.83	1.40	STRONG BUY	-35.81	-31.71	13.89	-12.90	0.00	0.00	N/A
AHY	Asaleo Care Limited	543.12	1.00	-0.50	1.24	BUY	14.17	13.52	27.17	4.84	2.31	4.90	N/A
BGA	Bega Cheese Ltd	1144.64	5.35	0.56	5.70	HOLD	42.08	24.64	-31.16	70.79	1.63	2.22	N/A
BKL	Blackmores Limited	1210.59	63.34	1.23	67.00	HOLD	56.68	36.93	-67.91	53.46	0.00	1.71	N/A
BUB	Bubs Aust Ltd	450.39	0.72	-2.04	0.78	SELL	-60.00	-180.00	N/A	66.67	0.00	0.00	N/A
BWX	BWX Limited	593.06	4.24	-0.24	5.02	BUY	35.41	31.82	30.87	11.27	0.96	1.17	N/A
CCL	Coca-Cola Amatil	7783.00	12.50	16.28	9.93	BUY	29.57	24.92	-18.82	18.65	2.08	3.28	CCEP indicative proposal and trading update
CGC	Costa Group Holdings	1467.04	3.65	-0.27	3.60	BUY	30.72	21.09	47.83	45.69	1.99	2.77	N/A
COL	Coles Group	22930.25	17.11	-0.47	19.90	BUY	24.35	22.88	4.92	6.43	3.43	3.65	N/A
ELD	Elders Limited	1783.38	11.40	-0.44	11.81	BUY	17.19	15.29	31.36	12.40	1.77	2.12	N/A
FNP	Freedom Food Ltd	834.10	3.01	0.00	3.27	HOLD	72.83	29.32	-46.74	148.42	0.00	0.85	N/A
GNC	GrainCorp Limited	842.19	3.72	1.09	4.75	BUY	-267.82	19.51	95.91	1472.71	0.11	2.87	N/A
ING	Inghams Group	1122.47	2.97	-1.66	3.64	BUY	14.03	14.29	-24.90	-1.80	4.70	5.22	N/A
MTS	Metcash Limited	3189.77	3.12	0.00	3.45	BUY	13.93	15.20	-2.29	-8.37	3.90	3.99	N/A
SHV	Select Harvests	696.14	6.21	0.16	7.43	BUY	24.60	19.93	-49.17	23.46	2.28	3.00	N/A
SM1	Synlait Milk Ltd	905.50	4.91	-2.77	5.98	HOLD	11.84	12.16	-13.30	-2.65	0.00	0.00	N/A
TGR	Tassal Group Limited	790.39	3.79	1.34	4.75	BUY	11.88	11.51	-0.78	3.21	4.84	4.88	N/A
TWE	Treasury Wine Estate	6477.65	9.04	0.67	12.35	BUY	20.58	19.01	-28.27	8.30	3.00	3.36	N/A
UMG	United Malt Group	1241.59	4.05	-2.41	4.73	BUY	21.06	17.39	N/A	21.09	0.65	3.00	N/A
WOW	Woolworths Group Ltd	49121.33	38.84	0.05	43.00	BUY	29.77	26.80	-1.31	11.08	2.46	2.72	Senior Management Changes

➤ Healthcare stocks:

Code	Company Name	Market Cap (\$m)	Price (\$)	Daily Price Change (%)	Consensus Target Price (\$)	Consensus Rating	2020 PE	2021 PE	2020 EPS GROWTH	2021 EPS GROWTH	2020 Div Yield	2021 Div Yield	Newsflash
ANN	Ansell Limited	5204.07	40.72	0.57	41.00	HOLD	24.85	21.89	3.27	13.49	1.75	1.96	N/A
API	Australian Pharm.	524.68	1.11	3.76	1.05	HOLD	17.88	13.31	-42.65	34.30	0.90	5.75	Initial Directors Interest Notice
AVH	Avita Therapeutics	507.92	6.77	1.96	15.00	BUY	-15.27	-9.85	-23.15	-55.05	0.00	0.00	N/A
COH	Cochlear Limited	14789.78	227.35	1.05	204.00	HOLD	86.45	66.82	-43.41	29.37	0.71	0.54	N/A
CSL	CSL Limited	134134.08	296.00	0.40	315.87	BUY	45.79	42.87	3.38	6.80	0.98	1.05	N/A
CUV	Clinuvel Pharmaceut.	1082.58	21.95	0.18	28.89	STRONG BUY	N/A	83.94	N/A	N/A	N/A	0.08	SCENESSE DNA Repair Update
EHE	Estia Health Ltd	363.20	1.39	0.00	1.57	HOLD	13.52	20.49	-36.70	-34.02	5.86	4.16	N/A
FPH	Fisher & Paykel H.	19320.08	33.04	-1.46	36.00	BUY	73.36	54.00	30.39	35.85	0.83	1.02	N/A
HLS	Healius	2286.44	3.54	-3.54	3.78	HOLD	33.69	20.44	-33.18	64.81	1.27	2.02	N/A
IDX	Integral Diagnostics	808.08	4.13	1.47	4.60	BUY	27.21	22.62	-8.82	20.28	2.37	2.73	N/A
MSB	Mesoblast Limited	1853.61	3.15	-0.32	3.60	HOLD	-17.53	-18.89	50.74	7.18	0.00	0.00	Annual Report to shareholders
MVF	Monash IVF Group Ltd	224.04	0.60	3.48	0.73	BUY	12.74	12.57	-44.41	1.31	2.17	5.04	N/A
MVP	Medical Developments	360.93	5.42	-1.45	8.61	BUY	706.65	387.14	-43.89	82.53	0.68	0.37	N/A
MYX	Mayne Pharma Ltd	545.70	0.32	-1.54	0.37	HOLD	-213.33	57.45	-108.51	471.33	0.00	0.00	New data on MYX's TOLSURA presented at IDWeek 2020
NAN	Nanosonics Limited	1649.29	5.42	-1.09	5.50	SELL	121.63	134.16	25.52	-9.34	0.00	0.00	Notice of Annual General Meeting/Proxy Form
OPT	Opthea Limited	790.13	2.38	1.71	4.90	BUY	-16.23	129.84	-56.03	112.50	0.00	0.00	N/A
PAR	Paradigm Bio.	639.18	2.75	-2.83	2.54	HOLD	-36.42	-18.84	-98.68	-93.38	0.00	0.00	N/A
PME	Pro Medicus Limited	3504.64	33.49	-0.42	29.65	HOLD	144.98	117.98	34.41	22.88	0.36	0.43	N/A
PNV	Polynovo Limited	1632.89	2.53	2.43	2.45	BUY	-606.71	506.00	10.71	219.90	0.00	0.00	N/A
RHC	Ramsay Health Care	14801.78	64.22	-0.70	70.00	HOLD	37.77	31.94	-40.63	18.25	1.01	1.40	N/A
RMD	ResMed Inc	9200.84	25.51	-0.89	26.20	HOLD	40.35	38.88	25.10	3.79	0.90	0.93	N/A
SHL	Sonic Healthcare	17384.62	36.23	-0.47	36.00	BUY	33.36	21.96	-6.40	51.94	2.08	3.05	N/A
SIG	Sigma Health Ltd	572.05	0.56	2.78	0.69	BUY	43.80	15.73	-70.42	178.53	3.18	0.54	N/A
SPL	Starchem Holdings	588.02	1.47	0.34	2.03	STRONG BUY	-40.69	-59.80	-9.09	31.94	0.00	0.00	N/A
VRT	Virtus Health Ltd	369.79	4.65	1.09	4.00	BUY	18.33	18.22	-27.98	0.59	2.80	3.30	N/A

➤ Bank stocks:

Code	Company Name	Market Cap (\$m)	Price (\$)	Daily Price Change (%)	Consensus Target Price (\$)	Consensus Rating	2020 PE	2021 PE	2020 EPS GROWTH	2021 EPS GROWTH	2020 Div Yield	2021 Div Yield	Newsflash
AFG	Aust Finance Grp	577.02	2.06	-4.19	2.11	BUY	13.45	14.43	11.33	-6.80	4.14	4.58	N/A
ANZ	ANZ Banking Grp Ltd	56182.52	19.68	-0.51	20.99	BUY	14.61	13.04	-39.73	11.98	2.90	4.01	N/A
BEN	Bendigo and Adelaide	3513.80	6.67	0.60	6.85	HOLD	11.55	13.36	-28.57	-13.53	5.49	3.84	N/A
BOQ	Bank of Queensland.	3048.59	6.65	-0.89	6.91	HOLD	14.11	13.43	-40.13	5.01	1.39	3.92	Launch of Capital Notes 2 Offer
CBA	Commonwealth Bank.	124009.34	69.71	-0.27	67.56	HOLD	16.66	17.88	-14.18	-6.79	3.89	3.64	N/A
GMA	Genworth Mortgage	707.46	1.71	-0.58	2.37	HOLD	-20.92	11.96	-129.64	274.85	0.73	4.25	N/A
MYS	MyState Limited	375.49	3.95	-3.19	4.50	BUY	11.65	10.20	-0.59	14.26	6.31	6.69	Change of Directors Interest Notice
NAB	National Aust. Bank	64255.52	19.33	-1.02	21.00	BUY	15.03	13.48	-30.18	11.46	3.06	4.26	N/A
VUK	Virgin Money UK PLC	1554.22	1.67	2.46	1.80	HOLD	15.11	9.00	-76.82	67.90	0.00	0.88	N/A
WBC	Westpac Banking Corp	67827.44	18.70	-0.43	20.00	BUY	20.00	12.44	-52.83	60.86	1.55	4.25	Items affecting Westpacs Second Half 2020 Results

➤ Diversified Financials / Insurance stocks:

Code	Company Name	Market Cap (\$m)	Price (\$)	Daily Price Change (%)	Consensus Target Price (\$)	Consensus Rating	2020 PE	2021 PE	2020 EPS GROWTH	2021 EPS GROWTH	2020 Div Yield	2021 Div Yield	Newsflash
AEG	Australian Ethical	504.62	4.38	-2.45	-	-	N/A	N/A	N/A	N/A	N/A	N/A	N/A
AMP	AMP Limited	4656.59	1.35	-0.74	1.48	HOLD	13.59	12.49	-43.46	8.76	7.60	4.18	N/A
ASX	ASX Limited	15743.16	80.86	-0.57	73.00	SELL	31.15	32.46	1.34	-4.05	2.89	2.78	N/A
AUB	AUB Group Ltd	1257.01	17.19	1.72	17.00	BUY	24.96	21.93	7.70	13.79	2.69	3.00	N/A
CCP	Credit Corp Group	1375.93	20.23	-1.03	22.03	BUY	15.11	19.78	-5.22	-23.62	2.63	2.54	N/A
CGF	Challenger Limited	3249.71	4.84	0.62	4.63	BUY	9.56	12.02	-11.37	-20.47	3.95	4.34	N/A
CNI	Centuria Capital	1245.49	2.30	-0.86	2.46	STRONG BUY	19.24	19.89	-5.77	-3.25	4.26	3.64	N/A
ECX	Eclixp Group Ltd	517.81	1.57	-3.09	1.70	BUY	12.56	11.83	17.04	6.20	0.00	2.02	N/A
FXL	FlexiGroup Limited	559.65	1.09	-3.54	1.36	HOLD	10.50	10.28	-47.24	2.18	4.47	2.43	N/A
HUB	HUB24 Ltd	1348.32	21.08	-1.45	19.49	BUY	98.10	72.32	38.51	35.66	0.37	0.57	Appendix 2A
IAG	Insurance Australia	11185.47	4.94	2.07	5.80	BUY	34.75	16.05	-64.46	116.52	2.11	4.41	N/A
IFL	IOOF Holdings Ltd	2077.84	3.21	0.31	4.61	BUY	9.66	12.16	-35.24	-20.59	8.15	5.45	N/A
JHG	Janus Henderson	1412.30	37.80	-0.24	39.00	BUY	10.98	10.75	-6.37	2.09	5.54	5.62	N/A
MFG	Magellan Fin Grp Ltd	10884.25	58.36	-1.54	60.00	HOLD	24.42	23.81	18.82	2.55	3.71	3.84	N/A
MNY	Money3 Corporation	428.01	2.27	-1.73	2.86	BUY	16.04	12.25	-29.34	30.98	4.41	4.92	N/A
MPL	Medibank Private Ltd	7353.19	2.69	0.75	2.82	BUY	20.94	19.67	-22.11	6.49	4.26	4.34	N/A
MQG	Macquarie Group Ltd	49229.56	136.45	0.20	130.92	BUY	16.66	22.44	-5.84	-25.72	3.92	2.67	N/A
NGI	Navigator Global Ltd	254.57	1.57	0.00	2.24	STRONG BUY	6.53	10.65	-14.29	-38.73	13.73	8.73	N/A
NHF	NIB Holdings Limited	1993.24	4.34	-0.46	4.80	BUY	17.97	16.60	-31.17	8.23	3.92	3.66	N/A
NWL	Netwealth Group	4252.36	17.60	-1.62	14.43	HOLD	98.63	82.93	21.64	18.93	0.80	0.95	N/A
OBL	Omni Bridgeway Ltd	937.48	3.69	0.00	5.45	BUY	-164.00	7.30	40.94	2346.67	1.63	1.90	Notice of Annual General Meeting/Proxy Form
OFX	OFX Group Ltd	288.99	1.17	-1.27	-	-	19.50	N/A	-23.57	N/A	4.27	N/A	N/A
PDL	Pendal Group Ltd	2195.06	6.76	-0.59	7.02	BUY	14.07	14.57	-6.57	-3.44	5.71	5.89	N/A
PNI	Pinnacle Investment	981.09	5.25	0.19	6.01	BUY	30.43	28.53	6.81	6.67	2.76	2.99	N/A
PPT	Perpetual Limited	1657.41	29.13	-0.68	35.49	BUY	15.15	14.64	-25.03	3.50	5.90	4.99	N/A
PTM	Platinum Asset	1842.17	3.15	0.32	3.20	SELL	12.51	14.60	-7.42	-14.27	7.84	6.65	N/A
QBE	QBE Insurance Group	13031.85	8.86	0.00	12.03	BUY	-20.84	12.35	-149.70	268.68	1.89	4.88	N/A
SDF	Steadfast Group Ltd	2918.08	3.38	0.60	3.90	BUY	21.89	20.24	12.01	8.17	2.60	3.05	N/A
SUN	Suncorp Group Ltd	11205.26	8.67	-0.91	10.26	BUY	16.51	13.27	-37.70	24.44	4.24	5.23	N/A
ZIP	Zip Co Ltd.	3487.12	6.36	-5.64	8.24	HOLD	-63.20	-58.62	-262.63	-7.82	0.00	0.00	Acquisition of The Urge and other Share Issuances

➤ Property stocks:

Code	Company Name	Market Cap (\$m)	Price (\$)	Daily Price Change (%)	Consensus Target Price (\$)	Consensus Rating	2020 PE	2021 PE	2020 EPS GROWTH	2021 EPS GROWTH	2020 Div Yield	2021 Div Yield	Newsflash
ABP	Abacus Property Grp.	1917.23	2.90	0.69	2.90	BUY	15.54	16.00	-33.95	-2.89	6.30	6.07	N/A
ADI	Apn Industria REIT	523.44	2.63	-0.75	2.73	BUY	13.35	14.01	7.65	-4.74	6.57	6.53	N/A
ARF	Arena REIT.	920.81	2.71	0.37	2.82	BUY	17.12	18.19	14.08	-5.87	5.17	5.28	Notice for custodians in respect of Sept 2020 distribution
AVN	Aventus Group	1327.95	2.42	1.68	2.50	BUY	13.80	13.49	-2.56	2.24	4.93	5.81	N/A
BWP	BWP Trust	2640.20	4.14	0.73	3.23	SELL	23.10	22.97	-2.69	0.56	4.38	4.37	N/A
CHC	Charter Hall Group	6031.81	12.88	-0.54	13.10	BUY	19.14	24.32	45.13	-21.31	2.78	2.94	N/A
CIP	Centuria I REIT	1619.02	3.16	-0.63	3.23	HOLD	16.83	17.95	-43.38	-6.24	5.80	5.47	N/A
CLW	Chtr H Lwr	2582.02	4.94	-1.20	5.47	BUY	17.05	16.75	6.94	1.79	5.67	5.91	N/A
CMW	Cromwell Prop	2339.09	0.90	0.56	1.01	HOLD	11.60	12.90	0.96	-10.13	8.75	8.75	Becoming a substantial holder
COF	Centuria Office REIT	1090.79	2.12	0.00	2.27	BUY	11.79	11.70	-14.55	0.83	8.38	7.83	N/A
CQE	Charter Hall Soc In	1029.58	2.89	1.40	3.20	BUY	16.85	18.65	-11.06	-9.62	5.54	5.16	N/A
CQR	Charter Hall Retail	2049.69	3.59	0.00	3.55	HOLD	12.21	13.97	-5.13	-12.65	6.94	6.32	N/A
CWP	Cedar Woods Prop.	453.11	5.76	2.31	5.80	HOLD	20.87	15.08	-57.11	38.41	3.13	3.56	N/A
DXS	Dexus	10082.71	9.19	-0.54	9.74	BUY	14.85	14.80	1.18	0.37	5.37	5.33	N/A
GDI	GDI Property Grp	590.81	1.09	0.00	1.48	STRONG BUY	N/A	20.19	N/A	N/A	N/A	7.16	N/A
GMG	Goodman Group	34122.02	18.66	1.03	18.73	HOLD	32.45	30.13	12.11	7.72	1.61	1.61	N/A
GOZ	Growthpoint Property	2687.07	3.48	0.00	3.56	BUY	14.90	14.61	1.19	2.01	6.29	5.80	N/A
GPT	GPT Group	8161.82	4.27	1.91	4.35	BUY	16.68	14.04	-20.58	18.83	4.53	5.54	N/A
HPI	Hotel Property	493.78	3.09	-1.28	3.15	BUY	15.45	15.85	2.56	-2.50	6.47	6.28	N/A
IAP	Investec Aust Prop	773.29	1.26	-0.40	1.70	-	14.48	13.70	N/A	5.75	7.10	6.71	N/A
INA	Ingenia Group	1545.06	4.70	-0.63	5.21	BUY	22.27	22.01	10.24	1.18	2.34	2.22	N/A
LIC	Lifestyle Communit.	1051.72	10.24	1.79	9.90	BUY	38.57	28.72	-30.86	34.27	0.59	0.56	N/A
LLC	Lendlease Group	8685.94	12.75	1.03	13.77	BUY	89.72	19.63	-82.17	357.11	2.56	2.38	N/A
MGR	Mirvac Group	8662.62	2.23	1.36	2.41	BUY	14.17	15.92	-5.39	-10.97	4.37	4.50	N/A
NSR	National Storage	1918.35	1.86	-1.33	1.83	HOLD	22.52	23.30	-16.06	-3.35	4.31	4.27	N/A
RFF	Rural Funds Group	795.14	2.43	3.40	2.43	BUY	15.86	16.45	10.98	-3.59	4.42	4.64	N/A
SCG	Scentre Grp	11782.16	2.26	-0.44	2.35	HOLD	14.81	11.70	-39.02	26.65	3.84	6.88	N/A
SCP	SCA Property Group	2400.76	2.25	0.90	2.31	HOLD	14.91	15.56	-6.21	-4.15	5.88	5.58	N/A
SGP	Stockland	9548.33	4.04	1.00	4.11	HOLD	12.54	13.12	-9.98	-4.40	6.02	6.02	N/A
URW	UnibailRodawestfield	691.10	3.08	-1.60	2.96	HOLD	4.61	4.43	-34.40	4.01	8.49	12.36	N/A
VCX	Vicinity Centres	6031.76	1.35	1.51	1.38	HOLD	9.22	16.40	-18.15	-43.80	6.00	5.96	N/A
WPR	Waypoint REIT	2135.26	2.74	0.74	2.88	BUY	18.22	17.17	0.94	6.12	5.48	5.83	N/A

➤ IT stocks:

Code	Company Name	Market Cap (\$m)	Price (\$)	Daily Price Change (%)	Consensus Target Price (\$)	Consensus Rating	2020 PE	2021 PE	2020 EPS GROWTH	2021 EPS GROWTH	2020 Div Yield	2021 Div Yield	Newsflash
AD8	Audinate Group Ltd	539.33	7.11	0.28	7.50	BUY	-732.23	-175.12	-331.19	-318.13	0.00	0.00	N/A
ALU	Altium Limited	5152.19	39.25	-0.23	36.30	HOLD	85.00	68.10	-23.62	24.83	1.11	1.32	N/A
APT	Afterpay Limited	29051.13	100.76	-1.34	97.84	BUY	-1162.30	1103.49	-120.64	205.33	0.00	0.00	N/A
APX	Appen Limited	4257.96	34.60	-1.14	40.00	BUY	57.00	40.25	16.31	41.62	0.32	0.45	N/A
BVS	Bravura Solution Ltd	808.23	3.30	0.92	4.80	HOLD	20.33	20.06	9.68	1.34	3.34	3.58	N/A
CDA	Codan Limited	2122.75	11.64	-1.02	10.50	BUY	33.28	27.02	41.79	23.17	1.55	1.97	N/A
CPU	Computershare Ltd	6971.94	12.68	-1.63	14.21	HOLD	16.54	18.24	-24.88	-9.30	3.16	3.32	N/A
DDR	Dicker Data Limited	1698.52	9.73	-1.42	-	-	N/A	N/A	N/A	N/A	N/A	N/A	N/A
DTL	Data#3 Limited	1053.19	6.71	-1.90	4.20	HOLD	44.00	37.91	27.08	16.07	2.08	2.38	N/A
ELO	Elmo Software	487.39	5.54	-1.77	7.60	BUY	-25.48	-20.79	-93.67	-22.59	0.00	0.00	N/A
EML	EML Payments Ltd	1334.26	3.48	-5.69	4.25	BUY	40.12	33.40	86.84	20.12	0.00	0.00	N/A
HSN	Hansen Technologies	831.00	4.22	0.96	4.20	BUY	21.21	17.18	17.06	23.45	1.46	2.38	N/A
IFM	Infomedia Ltd	605.98	1.57	-3.10	2.00	BUY	28.89	28.37	6.74	1.85	2.64	2.59	N/A
IRE	IRESS Limited	1900.40	9.76	-0.71	11.48	HOLD	25.22	23.85	-8.98	5.72	4.43	4.62	N/A
IRI	Integrated Research	637.05	3.71	0.27	4.25	STRONG BUY	26.50	24.25	11.11	9.29	2.16	2.16	N/A
LNK	Link Admin Hldg	2603.24	4.94	0.82	5.10	HOLD	19.35	21.85	-31.34	-11.44	2.38	2.28	Change in substantial holding
MP1	Megaport Limited	2244.16	14.60	0.48	16.55	BUY	-60.83	-69.45	2.17	12.41	0.00	0.00	Becoming a substantial holder for MP1
NEA	Nearmap Ltd	1235.67	2.46	-2.38	3.13	BUY	-30.37	-41.60	-636.36	27.00	0.00	0.00	N/A
NXT	Nextdc Limited	6139.67	13.50	0.22	13.89	BUY	-361.06	-1867.22	-169.38	80.66	0.00	0.00	N/A
TNE	Technology One	2790.64	8.74	0.00	8.48	HOLD	43.67	39.17	14.69	11.49	1.46	1.68	N/A
TYR	Tyro Payments	1948.62	3.82	-2.05	4.00	HOLD	-80.13	-111.53	N/A	28.15	0.00	0.00	COVID-19 Trading Update 32 - Week Ended 23 October 2020
WTC	WiseTech Global Ltd	9443.97	29.45	0.96	26.00	HOLD	134.94	108.72	21.32	24.11	0.12	0.15	N/A
XRO	Xero Ltd	16285.96	114.09	0.07	85.00	HOLD	1009.47	433.12	423.74	133.07	0.00	0.00	N/A

➤ **Communication stocks:**

Code	Company Name	Market Cap (\$m)	Price (\$)	Daily Price Change (%)	Consensus Target Price (\$)	Consensus Rating	2020 PE	2021 PE	2020 EPS GROWTH	2021 EPS GROWTH	2020 Div Yield	2021 Div Yield	Newsflash
CAR	Carsales.Com Ltd.	5565.06	22.02	-2.52	19.17	HOLD	44.95	38.38	-9.23	17.10	1.89	2.16	N/A
CNU	Chorus Limited	3513.62	8.01	1.91	-	-	71.43	74.92	-6.84	-4.67	2.81	2.93	N/A
DHG	Domain Holdings Aus	2389.64	4.09	0.00	3.50	HOLD	133.49	77.83	-57.11	71.51	0.74	0.77	N/A
EVT	Event Hospitality	1412.07	8.63	-1.48	9.35	BUY	51.22	-345.20	-75.79	-114.84	2.43	1.76	N/A
NEC	Nine Entertainment	3666.60	2.14	-0.47	2.05	BUY	24.44	23.93	-36.02	2.15	3.27	3.00	N/A
NWS	News Corp..	897.71	19.44	0.93	25.00	BUY	78.42	54.32	-59.05	44.37	1.32	1.51	N/A
OML	Ooh!Media Limited	787.08	1.32	-1.13	1.25	BUY	-49.81	33.21	-116.49	250.00	0.00	0.46	N/A
REA	REA Group	16601.32	126.17	0.10	108.00	HOLD	62.84	54.64	-15.40	15.01	0.83	0.96	N/A
SEK	Seek Limited	8123.22	23.28	1.17	20.45	HOLD	79.66	172.06	-47.41	-53.70	0.74	0.42	N/A
SLC	Superloop Limited	342.09	0.93	-0.53	1.23	BUY	-9.94	-14.18	-30.69	29.91	0.13	0.10	N/A
SPK	Spark New Zealand	8018.60	4.33	0.00	-	HOLD	20.63	21.23	2.42	-2.86	5.42	5.17	N/A
SXL	Sthn Cross Media	488.79	0.19	0.00	0.18	HOLD	7.97	14.23	-67.42	-43.97	6.49	0.00	N/A
TLS	Telstra Corporation.	32468.70	2.76	1.10	3.50	BUY	14.97	20.23	-9.31	-26.02	5.77	5.62	N/A
TPG	TPG Telecom Limited	13312.89	7.17	0.14	8.71	HOLD	48.75	36.01	N/A	35.35	0.85	1.71	N/A
UWL	Uniti Group Ltd	623.43	1.25	0.00	1.82	STRONG BUY	25.39	20.66	354.73	22.87	0.00	0.00	N/A
VOC	Vocus Group Ltd	2341.98	3.74	-0.80	3.40	HOLD	22.00	21.85	4.41	0.69	0.00	0.00	Ceasing to be a substantial holder
VRL	Village Roadshow Ltd	421.85	2.20	1.85	2.20	HOLD	-12.22	-18.15	-254.28	32.67	0.45	0.00	N/A

➤ **Utility stocks:**

Code	Company Name	Market Cap (\$m)	Price (\$)	Daily Price Change (%)	Consensus Target Price (\$)	Consensus Rating	2020 PE	2021 PE	2020 EPS GROWTH	2021 EPS GROWTH	2020 Div Yield	2021 Div Yield	Newsflash
AGL	AGL Energy Limited.	8192.89	13.19	0.30	14.47	HOLD	10.53	13.29	-19.06	-20.81	7.24	7.42	N/A
APA	APA Group	12648.46	10.75	0.28	11.24	HOLD	40.66	41.12	2.37	-1.13	4.65	4.68	N/A
AST	AusNet Services Ltd	7618.69	2.03	0.00	1.90	HOLD	27.53	28.16	5.46	-2.24	4.97	4.55	N/A
SKI	Spark Infrastructure	3615.13	2.06	-0.96	2.28	HOLD	44.78	56.01	-23.70	-20.04	6.70	5.89	N/A

Disclaimer

This document was prepared by Deep Data Analytics. Deep Data Analytics and its related bodies corporate (“DDA”), its directors and/or employees charge a subscription for this report. Deep Data Analytics as principal, its directors and/or employees and their associates may hold securities in the companies mentioned in this report. Deep Data Analytics may seek to do business with any of the companies outlined in this report and should not be considered independent. This document contains Deep Data Analytics proprietary processed data and publicly available information. The information has not been verified or audited, and you are strongly advised to make your own independent assessment and investigation in respect of any matters contained in the document, including to seek independent professional advice. The document has been provided to you for your general information purposes only. It does not consider your particular investment objectives, financial situation or other specific needs. This report has been provided to you on the condition that it is purely general advice and not to be considered as personal advice at any level.

Deep Data Analytics or their respective directors, officers, employees or shareholders makes any representation or warranty, expressed or implied, and takes no responsibility, in respect of the accuracy, reliability, completeness or thoroughness of any of the information contained in this document. Each of those parties, to the maximum extent permitted by law, expressly disclaims, and as a recipient, you expressly release each of those parties from, all liabilities, including (without limitation) liability for negligence in respect of, any part of the information contained in the document. No such parties are under any obligation to update any information in this document or correct any inaccuracies or omissions that may exist or become apparent. Neither this document nor any additional information which may subsequently be provided to a recipient shall constitute or form part of any offer, solicitation, invitation, advice or recommendation to sell or acquire any securities or assets.

Deep Data Analytics provides this financial advice as an honest and reasonable opinion held at a point in time about an investment’s risk profile and merit and the information is provided by the Deep Data Analytics in good faith. The views of the adviser(s) do not necessarily reflect the views of the AFS Licensee. Deep Data Analytics has no obligation to update the opinion unless Deep Data Analytics is currently contracted to provide such an updated opinion. Deep Data Analytics does not warrant the accuracy of any information it sources from others. All statements as to future matters are not guaranteed to be accurate and any statements as to past performance do not represent future performance. Assessment of risk can be subjective. Portfolios of equity investments need to be well diversified and the risk appropriate for the investor. Equity investments in listed or unlisted companies yet to achieve a profit or with an equity value less than \$50 million should collectively be a small component of a balanced portfolio, with smaller individual investment sizes than otherwise. Investors are responsible for their own investment decisions, unless a contract stipulates otherwise. Deep Data Analytics does not stand behind the capital value or performance of any investment. Subject to any terms implied by law and which cannot be excluded, Deep Data Analytics shall not be liable for any errors, omissions, defects or misrepresentations in the information (including by reasons of negligence, negligent misstatement or otherwise) or for any loss or damage (whether direct or indirect) suffered by persons who use or rely on the information. If any law prohibits the exclusion of such liability, Deep Data Analytics limits its liability to the re-supply of the Information, provided that such limitation is permitted by law and is fair and reasonable.

Copyright © Deep Data Analytics. All rights reserved. This material is proprietary to Deep Data Analytics and may not be disclosed to third parties. Any unauthorized use, duplication or disclosure of this document is prohibited. The content has been approved for distribution by Deep Data Analytics (ABN 67 159 532 213 AFS Representative No. 1282992) which is a corporate approved representative of BR Securities (ABN 92 168 734 530 and holder of AFSL No. 456663). Deep Data Analytics is the business name of ABN 67 159 532 213.