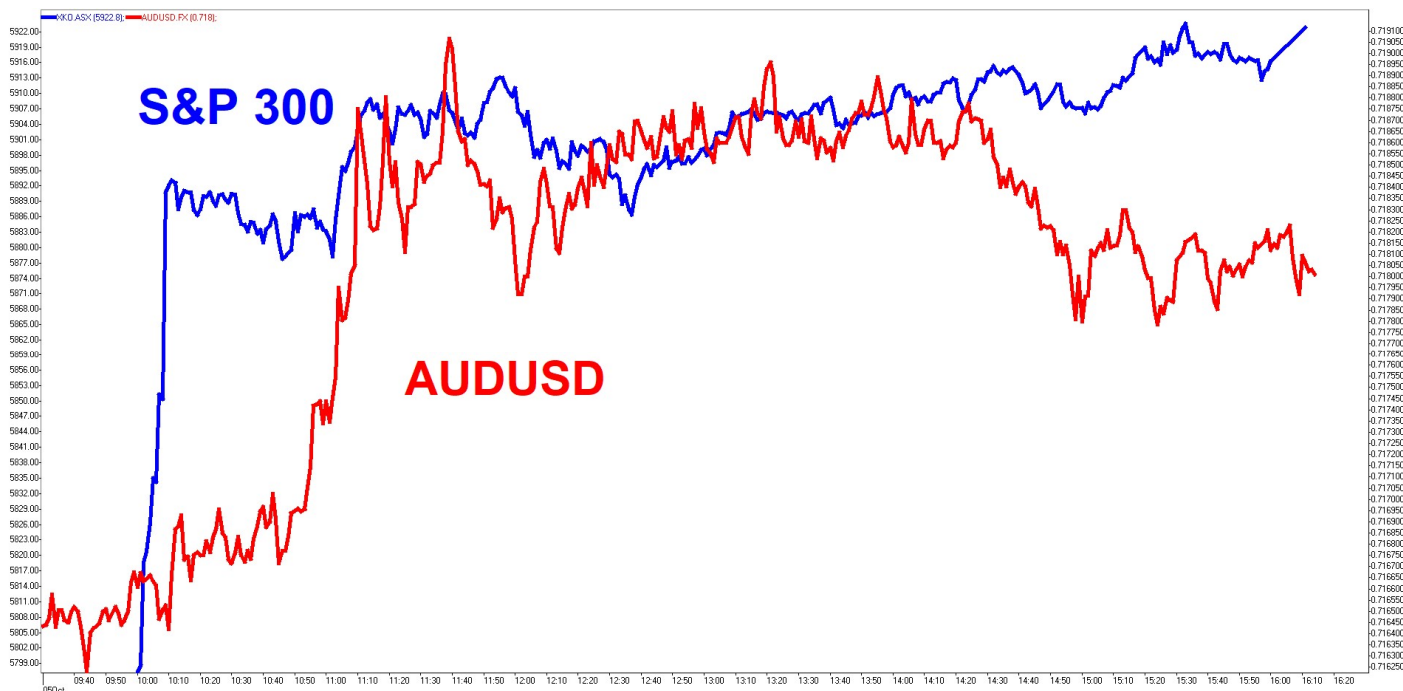


SUNSET STRIP

DEEP DATA ANALYTICS

INVESTMENT MOTTO: "Life is all about cycles. You evolve with the cycles or they run over you."

MARKET SNAPSHOT AND INTRADAY CHART



Security	Last	+/-	%	Security	Last	+/-	%	Security	Last	+/-	%
S&P 300	5922.80	148.60	2.57	DXY	93.8100	-0.0950	-0.10	SPTGLD	1893.07	-5.63	-0.30
S&P 200	5941.60	150.10	2.59	AUDUSD	0.7181	0.0018	0.25	TWI	60.80	-0.40	-0.65
All Ords	6135.10	151.90	2.54	NZDAUD	0.9257	-0.0012	-0.13	WTIS	37.94	0.89	2.40
Small Ords	2771.10	66.60	2.46	GBPAUD	1.8011	-0.0044	-0.24	BRENT	40.10	0.83	2.11
Micro Cap	1659.00	33.60	2.07	EURAUD	1.6337	-0.0018	-0.11	COPP3M	6418.50	-209.50	-3.16
NZ50G	11898.26	75.42	0.64	EURUSD	1.1732	0.0017	0.15	NICK3M	14305.00	-174.00	-1.20
JAPAN	23296.37	266.47	1.16	USDJPY	105.5700	0.2225	0.21	ZINC	2302.00	-63.00	-2.66
KOSPI	2358.77	30.88	1.33	CNYUSD	0.1473	0.0000	-0.01	Security	Last	+/-	%
SING	2509.20	13.09	0.52	Security	Last	+/-	%	DOWFUT	27754.00	189.00	0.69
SHANGHAI	3218.05	0.00	0.00	USBON	0.7064	0.0099	1.42	NASFUT	11336.50	103.25	0.92
HNGKNG	23801.97	342.92	1.46	USLBR	1.5040	0.0169	1.14	SPFUT	3361.25	22.00	0.66
GERMAN	12689.04	-41.73	-0.33	BOND10	0.7855	-0.0005	-0.06				
CAC40	4824.88	0.84	0.02	BBSR3M	0.0929	0.0029	3.22				
FTSE	5902.12	22.67	0.39	VIX	27.63	0.93	3.48				
DOWJON	27682.81	-134.09	-0.48	XVI	21.55	-1.74	-7.45				
NASDAQ	11075.02	-251.49	-2.22								
SP500	3348.44	-32.36	-0.96								

Sources: AFR, AAP, ASX, Bloomberg, CNBC, CNN, FactSet, Hedgeye, IRESS, Market Watch, Thomson Reuters, S&P, SMH, Trading Economics

MARKET COMMENTARY:

1. Local market was jammed up 2.5% on weak volumes as most were on holiday with NSW long weekend overlapping the school holidays. The market was completely dominated by the unwinding of the shorts and currency trades set up in our market after the White House covid cluster hit the US president and his wife. The severity of the covid exposure for the president was high enough for the doctors to move him to a special hospital and give him substantial therapies and drugs only used on patients that are severely affected. Despite the infection, the president still trying to keep the election campaign on track by getting the secret service to drive him around to show his supporters that he was doing well. Despite the show, the president will not be able to get back on the campaign for the next few weeks at best as that is the standard procedure. It would make a mockery of standards if the president goes back to campaigning like nothing has happened. Given the updates of all the treatments, it will be hard to break protocol as every step will be analyzed. Covid reality is that the first week is critical. Since the president has already had some worrying days...every day is going to bring uncertainty for markets over this week!!!

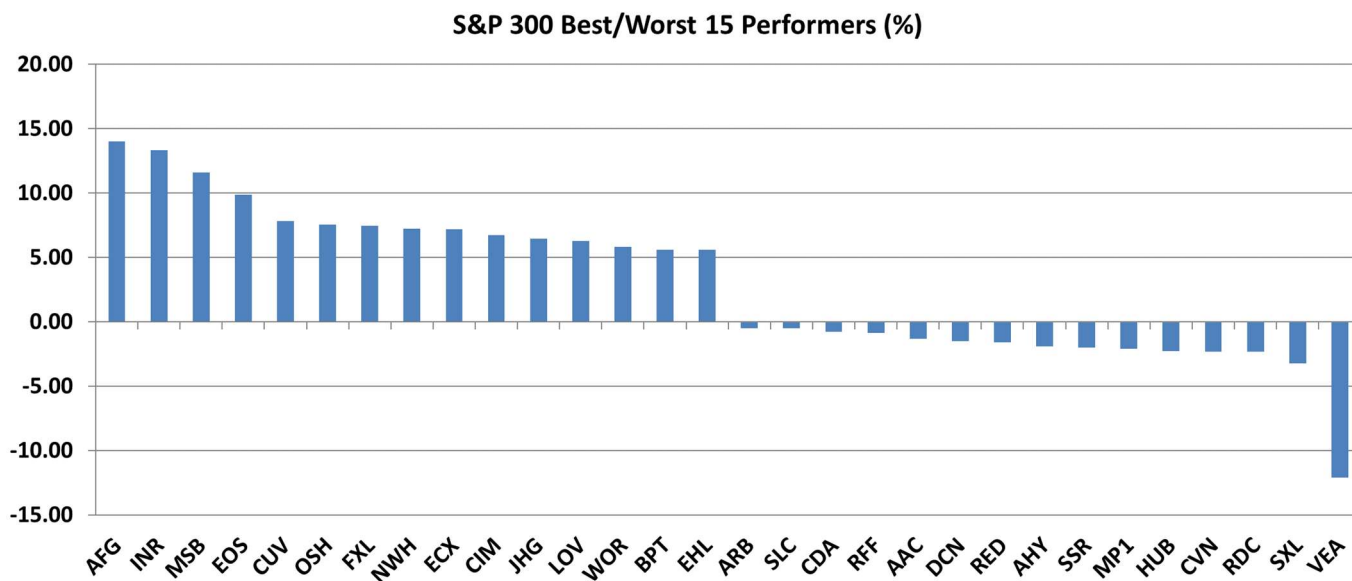
We have super Tuesday tomorrow...budget and RBA...nothing to see here!!! Coalition government that promised surplus every year will confirm that they will never get to surplus. The debt will blow out for years and will require decades of higher taxes to pay for it. The budget update tomorrow will have ramped up infrastructure boosts and tax cuts. It sounds good but it is the same old strategy that hasn't worked. The trickle down economic is a broken model as big vested interest groups have built massive business models in the middle to drain all the benefits out...like Jobkeeper delivering more bonuses and dividends than economic growth!!! It will fail and leave future governments unfunded. Inevitably budget reality means services to the low income and retirees will be cut. There is no real plan for reform or growth. Doing more of the same failed policies will deliver more economic weakness!!! RBA is going to talk a lot and do very little as they are very short on firepower...not winning a currency war with US Fed!!!

US market started down 300-400 on Friday before test results came negative for Pence and Biden boosted it to flat at lunch...then it faded on economic reality to close down 135 as White House covid cluster remaining the main uncertainty. Nonfarm Payrolls came in at 661k when expectations were at 800k. Data continues to show economic recovery fading with stimulus. Lot of the jobs lost are moving from short term layoffs to permanent as bankruptcies rise to new decade high. Trump's age and weight puts him in a high risk category for a president and hence they moved him to a hospital. It must be more severe case of covid as substantiated by the therapeutics and steroids used to treat the president. Bonds and Gold gave up the gains in our market time while US\$ remains strong. Oil down a bit on demand worries but Copper ticked up. Russell is up 0.5%, DOW down 0.5%, S&P down 1% and NASDAQ down 2.2%!!! The late recovery was under the view that Mnuchin will move from his \$1.6T stimulus package towards Pelosi level of \$2.2T since what has happened with Trump. The updates from the hospital since Friday suggests it was severe but the president is trying to keep the appearance going due to the election cycle.

China is in their "Golden Week" holiday period Australia has School holidays through next week. Remain nimble, contrarian and cautiously pragmatic with elevated global macro risks!!! Buckle up...it's going to get bumpy...new month/quarter has started!!!

**School Holiday Break...next Sunset
Strip on Monday 12th!!!**

2. Movers and Shakers in S&P 300 >



3. Market sentiment from CNN >

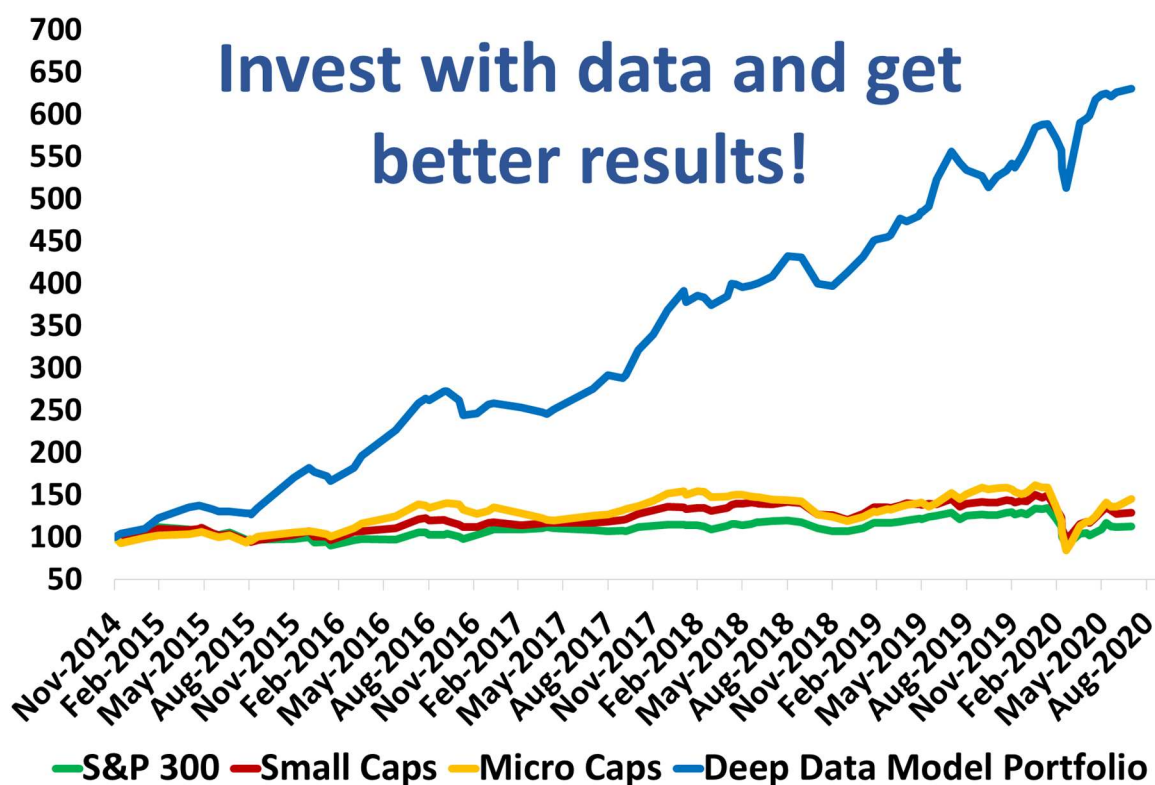


4. **Altium (ALU +0.43%)** > Electronic design software company Altium Limited (ASX:ALU) is expanding its leadership and organizational capacity to drive high performance for market dominance and to further invest in its new cloud platform Altium 365. The successful launch and the strong early adoption of Altium 365 has created the opportunity to pivot Altium's leadership and organization structure strongly toward the Cloud. Altium is separating its Cloud operations from its Software business and will focus on growing its market opportunity and expansion into the broader electronics ecosystem. **ASX**
5. **Karoon Energy (KAR +4.23%)** > Karoon Energy Ltd ("Karoon") provides the market with the following update on the status of the Baúna asset acquisition: • Remaining Conditions Precedent: As previously announced, transaction completion is subject to certain remaining conditions precedent under the Sale and Purchase Agreement (the "SPA"), including the following key outstanding third party/regulatory conditions precedent: (i) Agência Nacional do Petróleo, Gás Natural e Biocombustíveis ("ANP") approval, and (ii) FPSO charter assignment. • ANP Approval: Significant progress has been made towards obtaining ANP approval and Karoon is addressing the ANP's proposed form of approval and outstanding minor administrative issues relating to finalisation of the parent company guarantee provided by Karoon in favour of the ANP. • Expected Transaction Completion: In light of the above, Karoon is now aiming to complete the transaction in the last half of October 2020 and will keep the market updated on progress. **ASX**
6. **McMillan Shakespeare (MMS +4.76%)** > The class action sought orders that the NWC warranties were void, and sought either the restitution or a refund of the premium paid and interest on that amount, regardless of whether claims were in fact met and the contracts performed. The parties have reached agreement to settle the matter. The settlement is without any admission of liability and is also subject to approval of the Federal Court of Australia. MMS provided a net charge of approximately \$2 million plus its legal costs in its statutory net profit for FY20 and this will be sufficient to deal with the agreed settlement. **ASX**
7. **OZ Minerals (OZL +3.89%)** > OZ Minerals Limited (ASX:OZL) is pleased to announce the implementation of the Acquisition Scheme of Arrangement (the "Acquisition Scheme") under which OZ Minerals has acquired all of the issued share capital of Cassini Resources Limited ("Cassini") following implementation of the Demerger Scheme of Arrangement on 2 October 2020. Implementation of the Acquisition Scheme follows Cassini receiving orders from the Supreme Court of Western Australia approving the Acquisition Scheme on 23 September 2020. OZ Minerals Chief Executive Andrew Cole said the company is pleased to now have 100% ownership of the West Musgrave Project. **ASX**

Deep Data Analytics

Deep Data Analytics is the brainchild of Mathan Somasundaram, a 25-year veteran of the finance and technology sectors. In an increasingly volatile and uncertain economic and political landscape, Mathan saw the need for a dynamic data-driven investment strategy that can be used to optimise the risk-adjusted returns for investors. Seamlessly combining top-down and bottom-up approaches, the vertically integrated, multi-tiered model has been carefully calibrated over the years to rapidly adapt to evolving macro conditions and thereby ensure an effective and dynamic trade-off between risk and return.

Deep Data Analytics has been used as the focal point of strategy in macro marketing documents to Institutional and High Net Worth clients for over a decade. With successive years of consistent and reliable returns despite major disruptive thematic cycles, Deep Data Analytics is widely recognised as one of the leading integrated investment strategies in the market. And now, with the inclusion of a variety of risk/return investment options and insights, breadth of users from institutional to retail investors have access to cutting-edge analytics at their fingertips.



For more information visit... www.deepdataanalytics.com.au

Or email... info@deepdataanalytics.com.au

US market overnight - Reuters

U.S. stocks closed lower on Friday as news that U.S. President Donald Trump tested positive for COVID-19 put investors in a risk-off mood and added to mounting uncertainties surrounding the looming election. Tech shares weighed heaviest on the indexes, but the blue-chip Dow's losses were mitigated by gains in economically sensitive cyclical stocks. Despite Friday's sell-off, the S&P and the Nasdaq both gained 1.5% on the week, while the Dow ended the session 1.9% higher than last Friday's close. Trump tweeted late Thursday that he had contracted the coronavirus and would be placed under quarantine, compounding the unknowns for an already volatile market. But stocks pared losses after the White House provided assurances that Trump, while experiencing mild symptoms, is not incapacitated.

"This injects further uncertainty into the outcome of the election," said Roberto Perli, head of global policy research at Cornerstone Macro in Washington. "My read is that markets have demonstrated an aversion of late especially to uncertainty, not so much to one or the other candidate winning." Equities also got a brief boost after U.S. House of Representatives Speaker Nancy Pelosi's announcement that an agreement to provide another \$25 billion in government assistance to the airline industry was "imminent." "Markets are also paying attention to the likelihood that another stimulus package will pass soon," Perli added. "If that happens it could offset at least in part the uncertainty generated by the COVID news."

House Democrats passed a \$2.2 trillion fiscal aid package on Thursday, but the bill is unlikely to be approved in the Republican-controlled Senate. Partisan wrangling over the size and details of a new round of stimulus have stalled, over two months after emergency unemployment benefits expired for millions of Americans.

Data released on Friday showed the recovery of the labour market could be losing steam. The U.S. economy added 661,000 jobs in September, fewer than expected and the slowest increase since the recovery began in May.

The White House is lit before dawn after U.S. President Donald Trump announced that he and U.S. first lady Melania Trump have both tested positive for the coronavirus disease (COVID-19) in Washington, U.S., October 2, 2020. REUTERS/Joshua Roberts

Payrolls remain a long way from regaining the 22 million jobs lost since the initial shutdown, and the ranks of the permanently unemployed are swelling.

The Dow Jones Industrial Average .DJI fell 134.09 points, or 0.48%, to 27,682.81, the S&P 500 .SPX lost 32.36 points, or 0.96%, to 3,348.44 and the Nasdaq Composite .IXIC dropped 251.49 points, or 2.22%, to 11,075.02. Of the 11 major sectors in the S&P 500, tech .SPLRCT suffered the biggest loss, while real estate .SPLRCR and utilities .SPLRCU enjoyed the largest percentage gains.

In a reversal from recent sessions, market leaders Apple Inc AAPL.O Amazon.com AMZN.O and Microsoft Corp MSFT.O were the heaviest drags on the S&P and the Nasdaq.

Commercial air carriers rose on news of a possible new round of government aid, with the S&P 1500 Airline index .SPCOMAIR rising 2.3%.

Tesla Inc TSLA.O shares plunged 7.4% after the electric car maker's third quarter vehicle deliveries, while reaching a new record, underwhelmed investors.

Advancing issues outnumbered declining ones on the NYSE by a 1.45-to-1 ratio; on Nasdaq, a 1.13-to-1 ratio favoured decliners.

The S&P 500 posted six new 52-week highs and one new low; the Nasdaq Composite recorded 56 new highs and 34 new lows.

Volume on U.S. exchanges was 9.30 billion shares, compared with the 9.93 billion average over the last 20 trading days.

US Movers and Shakers - CNBC

MARKET MOVERS

S&P NASDAQ DOW EUR ASIA COVID19

TOP

LYB	LyondellBasell I...	6.017%	<div></div>
URI	United Rentals I...	5.515%	<div></div>
DVN	Devon Energy ...	5.495%	<div></div>
IVZ	Invesco Ltd	5.333%	<div></div>
OKE	ONEOK Inc	4.986%	<div></div>

BOTTOM

DXCM	DexCom Inc	7.085%	<div></div>
ATVI	Activision Blizz...	5.298%	<div></div>
VRTX	Vertex Pharmac...	4.647%	<div></div>
NFLX	Netflix Inc	4.635%	<div></div>
MXIM	Maxim Integrat...	4.186%	<div></div>

MARKET MOVERS

S&P NASDAQ DOW EUR ASIA COVID19

TOP

AAL	American Airlin...	3.339%	<div></div>
UAL	United Airlines ...	2.359%	<div></div>
JBHT	J.B. Hunt Trans...	1.821%	<div></div>
WYNN	Wynn Resorts Ltd	1.568%	<div></div>
ROST	Ross Stores Inc	1.466%	<div></div>

BOTTOM

TSLA	Tesla Inc	7.379%	<div></div>
ATVI	Activision Blizz...	5.298%	<div></div>
VRTX	Vertex Pharmac...	4.647%	<div></div>
NFLX	Netflix Inc	4.635%	<div></div>
MXIM	Maxim Integrat...	4.186%	<div></div>

MARKET MOVERS

S&P NASDAQ DOW EUR ASIA COVID19

TOP

DOW	Dow Inc	2.603%	<div></div>
CAT	Caterpillar Inc	2.202%	<div></div>
MCD	McDonald's Corp	1.403%	<div></div>
HON	Honeywell Inter...	1.179%	<div></div>
CVX	Chevron Corp	1.093%	<div></div>

BOTTOM

AMGN	Amgen Inc	3.908%	<div></div>
AAPL	Apple Inc	3.228%	<div></div>
MSFT	Microsoft Corp	2.951%	<div></div>
INTC	Intel Corp	2.355%	<div></div>
CRM	Salesforce.Com...	2.21%	<div></div>

MARKET MOVERS

S&P NASDAQ DOW EUR ASIA COVID19

TOP

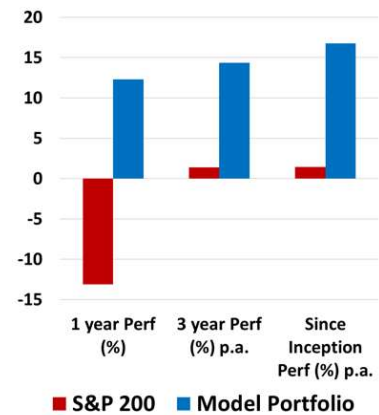
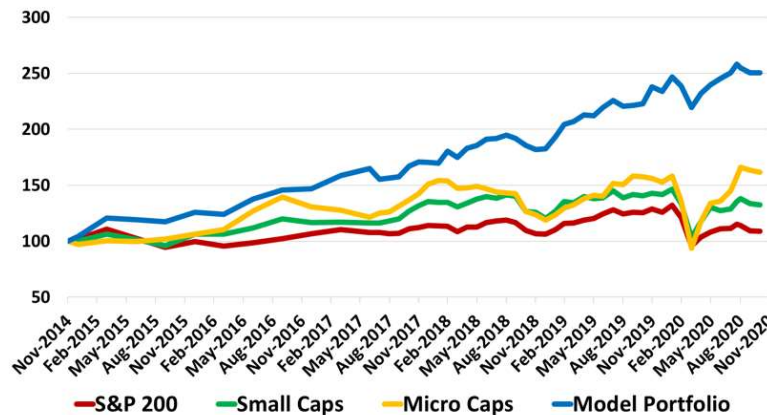
BNTX	BioNTech SE	1.362%	<div></div>
SNY	Sanofi SA	1.041%	<div></div>
DGX	Quest Diagnost...	1.038%	<div></div>
RHHBY	Roche Holding ...	1.028%	<div></div>
CVAC	CureVac NV	0.849%	<div></div>

BOTTOM

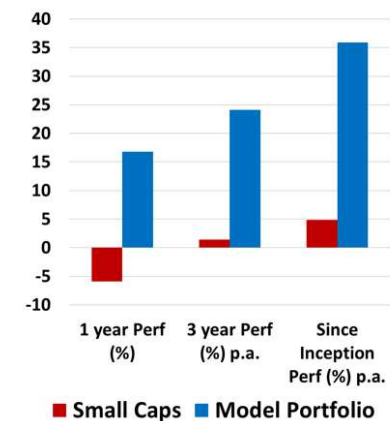
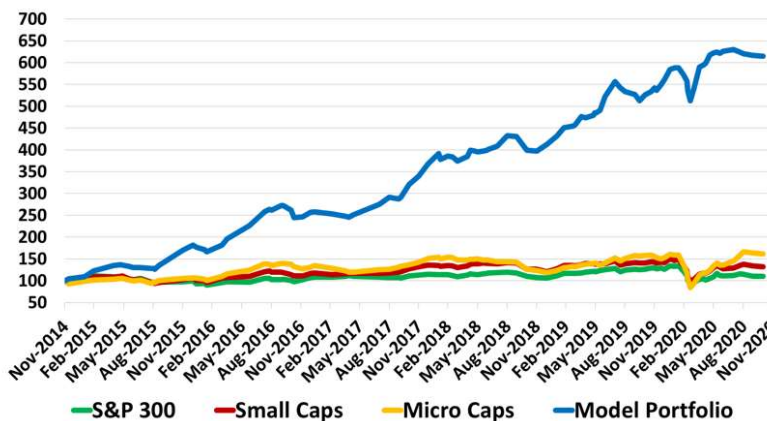
MESO	Mesoblast Ltd	35.27%	<div></div>
ALNY	Alnylam Pharm...	5.607%	<div></div>
EBS	Emergent BioS...	5.298%	<div></div>
VIR	Vir Biotechnolo...	4.086%	<div></div>
AMGN	Amgen Inc	3.908%	<div></div>

Deep Data Analytics

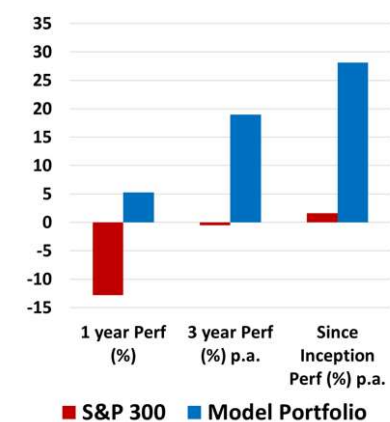
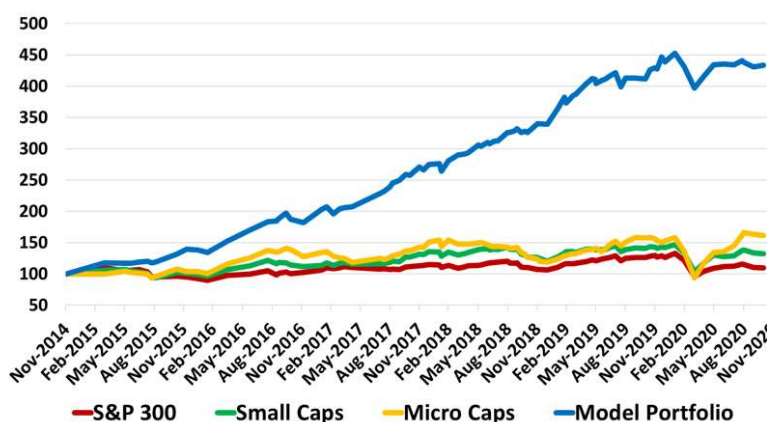
S&P 100 Best 10 with Cash



Small Cap Best 10 with Cash



GARY Best 10 with Cash



For more information visit... www.deepdataanalytics.com.au

Or email... info@deepdataanalytics.com.au

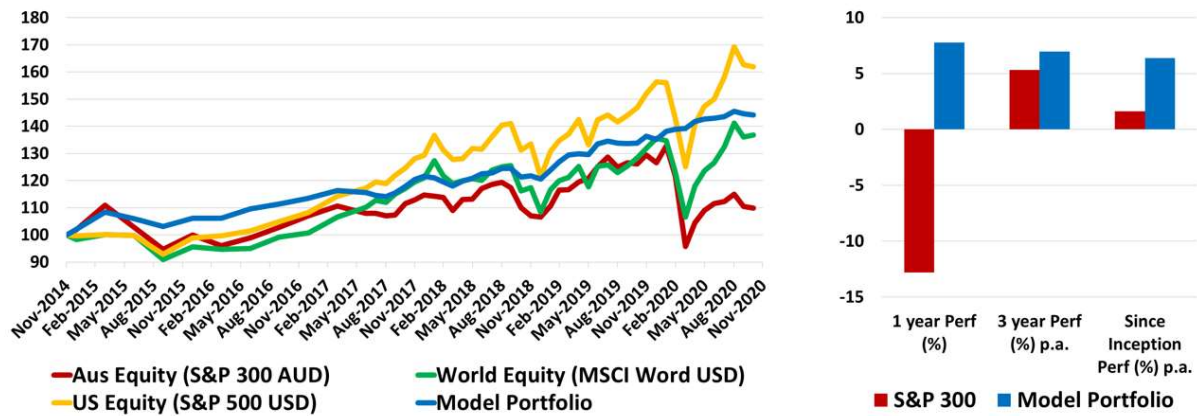
TODAY'S TOP 30 WINNERS AND LOSERS IN S&P 300

Code	Company Name	Market Cap (\$m)	Price (\$)	Daily Price Change (%)	Consensus Target Price (\$)	Consensus Rating	2020 PE	2021 PE	2020 EPS GROWTH	2021 EPS GROWTH	2020 Div Yield	2021 Div Yield	Newsflash
AFG	Aust Finance Grp	555.55	2.36	14.01	2.08	BUY	15.41	16.74	11.33	-7.94	3.62	3.94	N/A
INR	Ioneer Ltd	252.32	0.17	13.33	0.50	-	-0.54	-0.27	N/A	-96.52	0.00	0.00	N/A
MSB	Mesoblast Limited	1871.21	3.56	11.60	5.45	HOLD	-19.81	-24.69	50.74	19.75	0.00	0.00	N/A
EOS	Electro Optic Sys.	774.04	5.69	9.85	7.14	BUY	32.51	25.40	-9.79	28.00	0.00	0.00	N/A
CUV	Clinuvel Pharmaceut.	1128.04	24.61	7.80	43.09	STRONG BUY	N/A	121.23	N/A	N/A	N/A	0.07	N/A
OSH	Oil Search Ltd	5236.18	2.71	7.54	3.69	BUY	94.98	22.84	-91.05	315.81	0.18	1.22	N/A
FXL	FlexiGroup Limited	500.22	1.09	7.43	1.36	HOLD	10.45	10.23	-47.24	2.18	4.49	2.44	N/A
NWH	NRW Holdings Limited	800.04	2.01	7.20	2.77	STRONG BUY	9.66	8.49	64.99	13.78	2.29	3.60	N/A
ECX	Eclixp Group Ltd	513.02	1.72	7.17	1.70	BUY	13.76	12.96	17.04	6.20	0.00	1.84	N/A
CIM	Cimic Group Ltd	5827.24	19.65	6.74	27.50	HOLD	9.30	8.70	-14.29	6.92	4.32	7.21	N/A
JHG	Janus Henderson	1223.80	34.92	6.46	34.43	BUY	10.26	10.43	-7.46	-1.60	6.00	6.08	Janus Henderson Group - Trian SEC Form 13-D
LOV	Lovisa Holdings Ltd	838.19	8.29	6.28	7.38	HOLD	20.27	38.18	18.57	-46.90	0.52	1.35	N/A
WOR	Worley Limited	4918.45	10.00	5.82	11.70	BUY	13.37	14.73	25.61	-9.27	3.79	4.37	N/A
BPT	Beach Energy Limited	2851.67	1.32	5.60	1.87	BUY	6.79	8.59	-21.78	-21.00	1.47	1.49	N/A
EHL	Emeco Holdings	437.96	0.85	5.59	1.23	BUY	4.19	6.33	10.52	-33.85	0.00	0.00	N/A
TYR	Tyro Payments	1703.79	3.60	5.57	3.80	HOLD	-81.21	-104.86	N/A	22.56	0.00	0.00	COVID-19 Trading Update 29 - Week Ended 2 October 2020
BEN	Bendigo and Adelaide	3179.90	6.33	5.50	6.83	SELL	10.96	12.47	-28.57	-12.13	5.79	4.04	N/A
SVW	Seven Group Holdings	6047.35	18.80	5.50	21.05	BUY	14.68	14.56	-6.33	0.83	2.16	2.41	N/A
VUK	Virgin Money Uk PLC	1219.47	1.35	5.49	1.80	HOLD	14.71	7.24	-80.77	103.34	0.00	1.09	Director/PDMR Shareholding
ALX	Atlas Arteria	5802.06	6.38	5.45	6.99	BUY	51.44	17.32	-59.82	197.07	2.34	5.59	N/A
ORE	Orocobre Limited	808.03	2.60	5.26	2.85	HOLD	-22.13	-29.09	-150.33	23.93	0.00	0.00	N/A
IFL	IOOF Holdings Ltd	1980.44	3.21	5.25	4.61	BUY	9.66	12.16	-35.24	-20.59	8.15	5.45	Trading Policy
FBU	Fletcher Building	3016.78	3.85	5.19	3.91	BUY	62.99	19.40	-85.07	224.68	0.71	2.76	N/A
AD8	Audinate Group Ltd	426.72	5.90	5.17	5.75	BUY	-607.62	-152.57	-331.19	-298.25	0.00	0.00	N/A
BOQ	Bank of Queensland.	2553.37	5.91	5.16	6.00	HOLD	12.54	12.69	-40.13	-1.22	1.56	4.59	N/A
GEM	G8 Education Limited	819.96	1.03	5.10	1.38	BUY	12.23	18.88	-41.52	-35.22	0.00	3.49	N/A
NHF	NIB Holdings Limited	1900.37	4.37	5.05	4.80	BUY	18.10	16.72	-31.17	8.23	3.89	3.63	N/A
CGF	Challenger Limited	2553.82	3.97	5.03	4.50	HOLD	7.84	9.98	-11.37	-21.40	4.81	5.22	N/A
SGM	Sims Limited	1530.38	7.98	5.00	9.44	HOLD	-27.72	39.19	-136.83	170.73	1.16	0.96	N/A
IAG	Insurance Australia	10191.72	4.63	4.99	5.85	BUY	32.57	14.85	-64.46	119.27	2.25	4.92	N/A

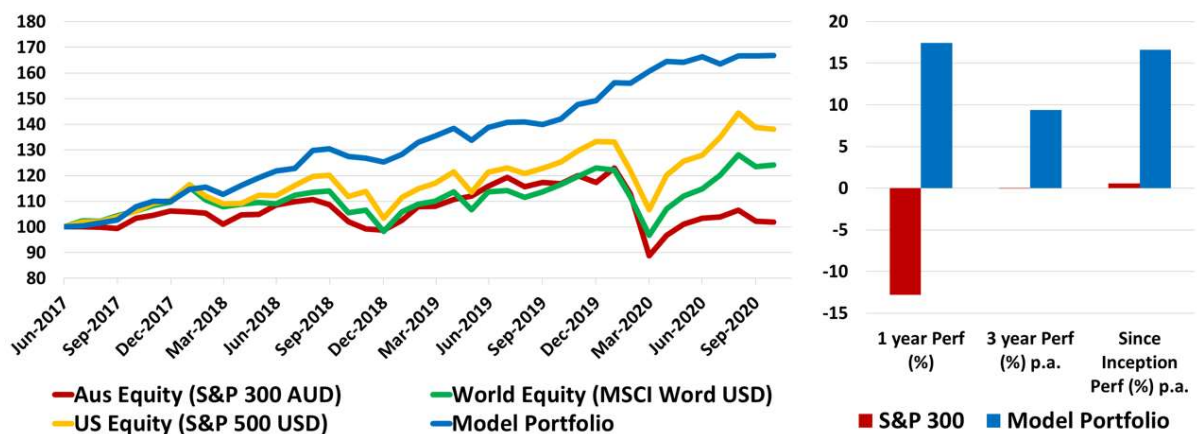
Code	Company Name	Market Cap (\$m)	Price (\$)	Daily Price Change (%)	Consensus Target Price (\$)	Consensus Rating	2020 PE	2021 PE	2020 EPS GROWTH	2021 EPS GROWTH	2020 Div Yield	2021 Div Yield	Newsflash
VEA	Viva Energy Group	3036.99	1.38	-12.10	2.15	BUY	68.38	17.29	-72.53	295.54	3.35	3.80	QUOTED: Ex Return of Capital & Ex Dividend
SXL	Sthn Cross Media	409.53	0.15	-3.23	0.18	HOLD	6.47	11.19	-67.42	-42.24	8.00	0.00	N/A
RDC	Redcape Hotel Group	469.37	0.83	-2.35	1.09	STRONG BUY	19.76	10.92	-46.15	80.95	5.66	8.37	N/A
CVN	Carnarvon Petroleum	336.34	0.21	-2.33	0.37	BUY	-70.00	-49.41	52.61	-41.67	0.00	0.00	Non-Executive Director Appointment
HUB	HUB24 Ltd	1122.40	17.43	-2.30	16.50	BUY	81.12	59.77	38.51	35.72	0.45	0.66	N/A
MP1	Megaport Limited	2468.80	15.66	-2.13	17.15	BUY	-65.25	-81.90	2.17	20.33	0.00	0.00	N/A
SSR	SSR Mining Inc.	430.21	26.00	-2.03	30.00	BUY	17.14	7.87	35.21	117.87	0.00	8.28	N/A
AHY	Asaleo Care Limited	559.42	1.01	-1.94	1.24	BUY	14.39	13.72	27.17	4.84	2.28	4.83	N/A
RED	Red 5 Limited	610.88	0.31	-1.61	0.50	BUY	43.57	-76.25	-41.67	-157.14	0.00	0.00	N/A
DCN	Dacian Gold Ltd	186.43	0.33	-1.49	0.40	HOLD	-3.44	5.71	-526.22	160.16	0.00	0.00	N/A
AAC	Australian Agricul.	672.08	1.10	-1.35	1.40	STRONG BUY	-35.48	-31.43	13.89	-12.90	0.00	0.00	N/A
RFF	Rural Funds Group	774.84	2.27	-0.87	2.43	BUY	14.81	15.36	10.98	-3.59	4.74	4.97	N/A
CDA	Codan Limited	2023.47	11.12	-0.80	10.50	BUY	31.79	25.81	41.79	23.17	1.62	2.06	N/A
SLC	Superloop Limited	345.74	0.94	-0.53	1.23	BUY	-10.04	-14.33	-30.69	29.91	0.13	0.10	N/A
ARB	ARB Corporation.	2287.14	28.50	-0.52	23.60	HOLD	47.14	35.31	-16.12	33.51	1.10	1.59	N/A
EVN	Evolution Mining Ltd	9961.22	5.80	-0.51	5.50	HOLD	26.30	19.24	67.27	36.69	2.12	2.67	N/A
NCM	Newcrest Mining	25550.05	31.13	-0.51	36.45	HOLD	25.64	15.37	8.49	66.84	0.85	1.14	2020 Annual Report
RMS	Ramellus Resources	1666.17	2.05	-0.49	2.40	BUY	16.09	8.92	206.99	80.34	0.49	1.71	N/A
MNY	Money3 Corporation	400.22	2.15	-0.46	2.86	BUY	15.19	11.60	-29.34	30.98	4.65	5.19	N/A
PRU	Perseus Mining Ltd	1666.89	1.36	-0.37	1.65	BUY	25.48	14.92	1376.94	70.83	0.00	0.00	N/A
SBM	St Barbara Limited	2137.23	3.02	-0.33	4.00	BUY	13.59	8.24	-19.77	64.90	2.82	2.74	N/A
APT	Afterpay Limited	22643.50	79.52	-0.16	92.98	BUY	-917.29	998.74	-120.64	191.84	0.00	0.00	N/A
BGL	Bellevue Gold Ltd	907.09	1.08	0.00	1.38	STRONG BUY	-74.48	-135.00	-31.82	44.83	0.00	0.00	N/A
COE	Cooper Energy Ltd	528.66	0.33	0.00	0.50	BUY	-87.60	58.45	-192.75	249.87	0.00	0.00	N/A
DDR	Dicker Data Limited	1342.30	7.80	0.00	-	-	N/A	N/A	N/A	N/A	N/A	N/A	N/A
DEG	De Grey Mining	1516.54	1.19	0.00	1.06	STRONG BUY	N/A	N/A	N/A	N/A	0.00	0.00	N/A
FAR	FAR Ltd	109.77	0.01	0.00	0.03	BUY	-16.42	-11.00	33.00	-49.25	0.00	0.00	N/A
FNP	Freedom Food Ltd	834.10	3.01	0.00	3.27	HOLD	72.83	29.32	-46.74	148.42	0.00	0.85	N/A
GDI	GDI Property Grp	577.86	1.07	0.00	1.48	STRONG BUY	N/A	19.72	N/A	N/A	N/A	7.32	N/A
JMS	Jupiter Mines.	519.13	0.27	0.00	0.40	BUY	5.30	16.56	N/A	-68.00	23.58	8.05	N/A

Deep Data Analytics

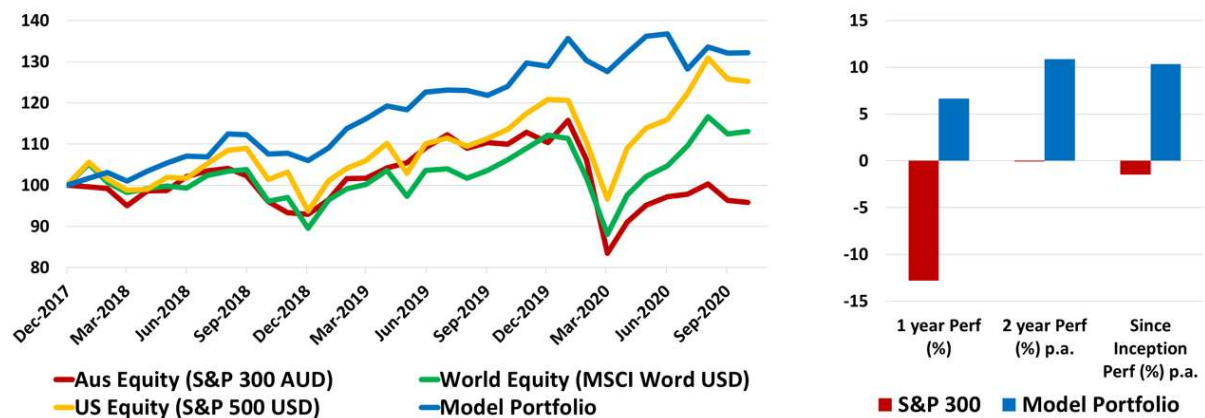
Multi Asset ETF Model



Global Tech/Health ETF Model



ESG ETF Model



For more information visit... www.deepdataanalytics.com.au

Or email... info@deepdataanalytics.com.au

CHECKING S&P 300 BY THE SECTOR

➤ Energy stocks:

Code	Company Name	Market Cap (\$m)	Price (\$)	Daily Price Change (%)	Consensus Target Price (\$)	Consensus Rating	2020 PE	2021 PE	2020 EPS GROWTH	2021 EPS GROWTH	2020 Div Yield	2021 Div Yield	Newsflash
ALD	Ampol Limited	5715.79	23.58	3.01	28.38	BUY	27.56	15.00	-34.75	83.67	1.98	3.63	N/A
BPT	Beach Energy Limited	2851.67	1.32	5.60	1.87	BUY	6.79	8.59	-21.78	-21.00	1.47	1.49	N/A
COE	Cooper Energy Ltd	528.66	0.33	0.00	0.50	BUY	-87.60	58.45	-192.75	249.87	0.00	0.00	N/A
CVN	Camarvon Petroleum	336.34	0.21	-2.33	0.37	BUY	-70.00	-49.41	52.61	-41.67	0.00	0.00	Non-Executive Director Appointment
FAR	FAR Ltd	109.77	0.01	0.00	0.03	BUY	-16.42	-11.00	33.00	-49.25	0.00	0.00	N/A
KAR	Karoon Energy Ltd	392.97	0.74	4.23	1.44	BUY	-5.12	21.14	-32.62	124.22	0.00	0.00	Bauna Acquisition Update
NHC	New Hope Corporation	1052.93	1.29	1.98	1.47	HOLD	8.00	44.93	-63.03	-82.20	6.41	1.15	N/A
ORG	Origin Energy	7502.76	4.39	3.05	6.42	BUY	7.50	18.20	0.31	-58.79	6.40	4.81	Withdrawal of Resolution 4 from Notice of AGM
OSH	Oil Search Ltd	5236.18	2.71	7.54	3.69	BUY	94.98	22.84	-91.05	315.81	0.18	1.22	N/A
SOL	Soul Pattinson (W.H.)	5625.79	24.04	2.30	24.16	BUY	27.85	44.25	-42.83	-37.07	2.34	2.41	N/A
STO	Santos Ltd	9727.92	4.89	4.71	6.49	BUY	21.05	15.04	-56.33	39.94	1.37	1.68	N/A
SKY	Senex Energy Limited	452.60	0.33	4.84	0.42	BUY	54.17	23.64	7.91	129.17	0.00	0.00	N/A
VEA	Viva Energy Group	3036.99	1.38	-12.10	2.15	BUY	68.38	17.29	-72.53	295.54	3.35	3.80	QUOTED: Ex Return of Capital & Ex Dividend
WHC	Whitehaven Coal	1079.11	1.08	3.35	1.93	BUY	39.23	-28.78	-94.87	-236.32	1.36	0.08	N/A
WOR	Worley Limited	4918.45	10.00	5.82	11.70	BUY	13.37	14.73	25.61	-9.27	3.79	4.37	N/A
WPL	Woodside Petroleum	16165.39	17.61	4.82	23.55	BUY	25.26	18.20	-59.93	38.80	3.24	4.30	N/A

➤ Material (Ex Mining) stocks:

Code	Company Name	Market Cap (\$m)	Price (\$)	Daily Price Change (%)	Consensus Target Price (\$)	Consensus Rating	2020 PE	2021 PE	2020 EPS GROWTH	2021 EPS GROWTH	2020 Div Yield	2021 Div Yield	Newsflash
ABC	Adbri Limited	1865.48	2.98	4.20	2.42	HOLD	19.39	20.29	-17.86	-4.45	3.18	3.11	N/A
AMC	Amcor PLC	13862.07	15.42	1.65	16.20	BUY	16.78	15.85	2.04	5.92	4.65	4.38	N/A
BKW	Brickworks Limited	2869.81	19.31	0.89	20.20	BUY	18.02	29.53	-35.27	-38.99	3.00	3.10	N/A
BLD	Boral Limited	5613.49	4.69	2.40	4.30	HOLD	27.74	29.80	-57.97	-6.92	2.13	0.87	N/A
CSR	CSR Limited	2096.85	4.47	3.47	3.98	HOLD	19.02	17.27	-35.95	10.17	4.45	3.02	N/A
FBU	Fletcher Building	3016.78	3.85	5.19	3.91	BUY	62.99	19.40	-85.07	224.68	0.71	2.76	N/A
IPL	Inditec Pivot	3865.03	2.06	3.52	2.40	BUY	18.06	15.04	31.53	20.09	1.46	3.16	N/A
JHX	James Hardie Indust	14880.77	34.25	2.18	34.95	BUY	28.40	28.41	21.15	-0.02	0.80	0.00	N/A
NUF	Nufarm Limited	1431.45	3.90	3.45	4.80	BUY	-44.12	29.98	-137.02	247.16	0.17	1.01	Change of Directors Interest Notice
ORA	Orora Limited	2316.87	2.43	1.25	2.50	HOLD	14.59	15.99	-26.79	-8.76	25.13	4.60	Daily share buy-back notice - Appendix 3E
ORI	Orica Limited	6311.42	15.97	2.70	18.50	BUY	19.24	16.52	-13.13	16.50	2.44	3.29	N/A
PGH	Pact Group Hldgs Ltd	767.11	2.28	2.24	2.78	HOLD	12.23	11.11	-16.68	10.07	0.00	3.18	N/A

➤ Gold stocks:

Code	Company Name	Market Cap (\$m)	Price (\$)	Daily Price Change (%)	Consensus Target Price (\$)	Consensus Rating	2020 PE	2021 PE	2020 EPS GROWTH	2021 EPS GROWTH	2020 Div Yield	2021 Div Yield	Newsflash
ALK	Alkane Resources Ltd	812.71	1.38	0.73	1.05	BUY	55.02	34.38	-37.46	60.06	0.00	0.00	N/A
BGL	Bellvue Gold Ltd	907.09	1.08	0.00	1.38	STRONG BUY	-74.48	-135.00	-31.82	44.83	0.00	0.00	N/A
DCN	Dacian Gold Ltd	186.43	0.33	-1.49	0.40	HOLD	-3.44	5.71	-526.22	160.16	0.00	0.00	N/A
DEG	De Grey Mining	1516.54	1.19	0.00	1.06	STRONG BUY	N/A	N/A	N/A	N/A	0.00	0.00	N/A
EVN	Evolution Mining Ltd	9961.22	5.80	-0.51	5.50	HOLD	26.30	19.24	67.27	36.69	2.12	2.67	N/A
GOR	Gold Road Res Ltd	1262.69	1.48	2.79	2.00	BUY	15.81	11.98	11139.76	32.00	0.58	2.22	N/A
NCM	Newcrest Mining	25550.05	31.13	-0.51	36.45	HOLD	25.64	15.37	8.49	66.84	0.85	1.14	2020 Annual Report
NST	Northern Star	10225.28	13.82	0.14	14.88	HOLD	27.59	14.96	72.00	84.43	1.08	1.69	N/A
PRU	Perseus Mining Ltd	1666.89	1.36	-0.37	1.65	BUY	25.48	14.92	1376.94	70.83	0.00	0.00	N/A
RED	Red 5 Limited	610.88	0.31	-1.61	0.50	BUY	43.57	-76.25	-41.67	-157.14	0.00	0.00	N/A
RMS	Ramelius Resources	1666.17	2.05	-0.49	2.40	BUY	16.09	8.92	206.99	80.34	0.49	1.71	N/A
RRL	Regis Resources	2571.30	5.06	0.40	5.75	HOLD	12.06	8.91	22.23	35.28	3.43	3.64	N/A
RSG	Resolute Mining	1004.54	0.94	3.30	1.59	BUY	10.09	6.02	45.27	67.66	1.81	1.99	N/A
SAR	Saracen Mineral	5770.74	5.22	0.19	6.10	BUY	23.68	15.61	82.89	51.69	0.25	1.17	N/A
SBM	St Barbara Limited	2137.23	3.02	-0.33	4.00	BUY	13.59	8.24	-19.77	64.90	2.82	2.74	N/A
SLR	Silver Lake Resource	2009.16	2.30	0.88	2.64	BUY	15.08	11.57	207.03	30.36	0.00	0.00	N/A
SSR	SSR Mining Inc.	430.21	26.00	-2.03	30.00	BUY	17.14	7.87	35.21	117.87	0.00	8.28	N/A
WAF	West African Res Ltd	968.10	1.12	1.36	1.30	BUY	6.67	2.96	2340.00	125.60	0.00	0.00	N/A
WGX	Westgold Resources.	991.74	2.40	1.69	3.20	STRONG BUY	24.41	9.76	495.94	150.18	0.00	0.28	N/A

➤ Mining (Ex Gold) stocks:

Code	Company Name	Market Cap (\$m)	Price (\$)	Daily Price Change (%)	Consensus Target Price (\$)	Consensus Rating	2020 PE	2021 PE	2020 EPS GROWTH	2021 EPS GROWTH	2020 Div Yield	2021 Div Yield	Newsflash
AMI	Aurelia Metals Ltd	419.51	0.50	4.17	0.75	STRONG BUY	10.27	7.58	-9.87	35.61	1.00	2.87	Becoming a substantial holder from MUFG
AWC	Alumina Limited	3917.27	1.42	4.81	1.95	BUY	18.65	16.82	-55.52	10.86	4.97	5.29	N/A
BHP	BHP Group Limited	103458.30	36.14	2.90	40.00	BUY	14.35	12.81	-10.20	12.08	4.71	5.41	N/A
BSL	BlueScope Steel Ltd	6438.34	13.40	4.85	13.60	BUY	19.16	25.36	-60.76	-24.44	0.91	0.96	N/A
CIA	Champion Iron Ltd	1353.19	2.95	3.15	3.85	BUY	9.14	4.77	-16.87	91.40	0.00	0.00	N/A
CMM	Capricorn Metals	603.47	1.81	3.13	1.70	HOLD	-84.19	58.39	N/A	244.19	0.00	0.00	N/A
FMG	Fortescue Metals Grp	49509.76	16.46	2.36	15.80	HOLD	7.67	7.29	54.22	5.10	10.18	10.00	N/A
GXY	Galaxy Resources	458.62	1.17	4.02	1.20	HOLD	-24.41	-28.54	42.30	14.47	0.00	0.00	N/A
IGO	IGO Limited	2404.54	4.20	3.19	5.30	HOLD	15.69	18.53	99.92	-15.36	2.52	2.58	N/A
ILU	Iluka Resources	3771.11	9.15	2.58	10.20	BUY	19.76	13.25	-30.95	49.06	0.34	3.43	N/A
IMD	Imdex Limited	523.32	1.34	1.52	1.58	BUY	22.03	29.56	-16.29	-25.48	2.31	1.33	N/A
INR	Ioneer Ltd	252.32	0.17	13.33	0.50	-	-0.54	-0.27	N/A	-96.52	0.00	0.00	N/A
JMS	Jupiter Mines.	519.13	0.27	0.00	0.40	BUY	5.30	16.56	N/A	-68.00	23.58	8.05	N/A
LYC	Lynas Corporation	2189.62	2.49	2.47	3.00	STRONG BUY	-382.49	36.09	-113.75	1159.91	0.00	0.00	N/A
MAH	Macmahon Holdings	517.20	0.25	4.17	0.37	STRONG BUY	8.93	8.33	-91.04	7.14	2.00	2.93	N/A
MGX	Mount Gibson Iron	853.86	0.73	1.39	0.95	STRONG BUY	7.98	7.37	15.82	8.20	4.11	5.48	N/A
MIN	Mineral Resources.	4558.40	24.77	2.48	26.00	HOLD	13.12	8.04	95.65	63.17	3.20	5.27	N/A
MLD	MACA Limited	221.11	0.84	1.82	1.31	STRONG BUY	7.57	6.41	48.00	18.02	5.65	5.95	N/A
NIC	Nickel Mines Limited	1393.91	0.69	4.58	1.04	BUY	10.94	5.93	N/A	84.65	1.63	4.45	N/A
ORE	Orocobre Limited	808.03	2.60	5.26	2.85	HOLD	-22.13	-29.09	-150.33	23.93	0.00	0.00	N/A
OZL	OZ Minerals	4344.46	13.90	3.89	14.02	BUY	25.18	14.01	4.93	79.75	1.50	1.76	Completion of Cassini acquisition
PLS	Pilbara Min Ltd	712.68	0.33	1.56	0.30	HOLD	-10.16	-24.45	-93.94	58.47	0.00	0.00	N/A
PRN	Perenti Global Ltd	772.05	1.12	1.36	1.71	BUY	7.23	6.94	-2.71	4.22	5.87	6.19	N/A
RIO	Rio Tinto Limited	34745.84	95.70	2.24	104.50	BUY	10.37	10.59	-2.97	-2.09	6.26	6.14	N/A
S3Z	South32 Limited	9934.85	2.12	3.41	2.70	BUY	39.45	18.39	-81.90	114.56	1.90	2.33	N/A
SFR	Sandfire Resources	707.66	4.13	4.03	5.50	BUY	8.44	7.00	-27.98	20.68	3.43	3.65	N/A
SGM	Sims Limited	1530.38	7.98	5.00	9.44	HOLD	-27.72	39.19	-136.83	170.73	1.16	0.96	N/A
WSA	Western Areas Ltd	560.50	2.11	3.43	2.65	BUY	12.99	16.37	188.76	-20.67	1.15	1.00	N/A

➤ Industrial stocks:

Code	Company Name	Market Cap (\$m)	Price (\$)	Daily Price Change (%)	Consensus Target Price (\$)	Consensus Rating	2020 PE	2021 PE	2020 EPS GROWTH	2021 EPS GROWTH	2020 Div Yield	2021 Div Yield	Newsflash
AIA	Auckland International	9969.17	6.78	0.15	6.73	HOLD	65.34	-1865.72	-52.52	-103.50	0.38	0.00	N/A
ALQ	ALS Ltd	4447.97	9.64	4.56	9.29	BUY	24.78	27.71	7.22	-10.58	1.73	1.69	N/A
ALX	Atlas Arteria	5802.06	6.38	5.45	6.99	BUY	51.44	17.32	-59.82	197.07	2.34	5.59	N/A
AMA	AMA Group Limited	462.36	0.64	1.59	0.80	BUY	91.43	30.77	-87.15	197.14	0.13	0.00	N/A
ASB	Austal Limited	1118.23	3.15	1.29	4.38	BUY	13.19	12.95	49.48	1.84	2.22	2.84	N/A
AZI	Aurizon Holdings Ltd	7964.91	4.28	2.88	5.40	BUY	15.88	16.41	20.99	-3.25	6.30	6.12	N/A
BIN	Bingo Industries Ltd	1589.18	2.52	3.70	2.50	BUY	31.94	39.79	-6.08	-19.72	1.23	1.01	N/A
BXB	Brambles Limited	15371.56	10.49	2.74	12.25	BUY	22.36	21.37	-17.65	4.59	3.98	3.12	Daily share buy-back notice - Appendix 3E
CIM	Cimic Group Ltd	5827.24	19.65	6.74	27.50	HOLD	9.30	8.70	-14.29	6.92	4.32	7.21	N/A
CWY	Cleanaway Waste Ltd	4256.59	2.11	1.93	2.45	BUY	30.48	27.16	-1.68	12.25	1.81	2.06	N/A
DOW	Downer EDI Limited	3001.53	4.47	4.44	5.10	BUY	16.04	12.28	-43.40	30.63	3.29	3.45	N/A
EHL	Emeco Holdings	437.96	0.85	5.59	1.23	BUY	4.19	6.33	10.52	-33.85	0.00	0.00	N/A
EOS	Electro Optic Sys.	774.04	5.69	9.85	7.14	BUY	32.51	25.40	-9.79	28.00	0.00	0.00	N/A
GWA	GWA Group Ltd	746.97	2.89	2.12	2.60	HOLD	15.76	18.80	-8.14	-16.16	4.64	3.75	N/A
IPH	IPH Limited	1522.10	7.14	1.28	8.78	BUY	19.62	19.50	20.76	0.64	4.01	4.10	N/A
MMS	McMillan Shakespeare	650.00	8.80	4.76	9.90	HOLD	10.04	9.58	-16.28	4.84	6.57	6.41	Class Action settled subject to Federal Court approval
MND	Monadelphous Group	948.31	10.39	3.69	11.00	BUY	26.83	17.97	-41.75	49.32	2.75	4.10	N/A
NWH	NRW Holdings Limited	800.04	2.01	7.20	2.77	STRONG BUY	9.66	8.49	64.99	13.78	2.29	3.60	N/A
PET	Phoslock Env Tec Ltd	153.13	0.25	0.00	-	-	N/A	N/A	N/A	N/A	N/A	N/A	N/A
QAN	Qantas Airways	7751.64	4.31	4.87	4.63	BUY	-84.10	-10.78	-108.78	-680.33	1.05	0.49	N/A
QUB	Qube Holdings Ltd	4825.60	2.59	1.17	3.08	BUY	40.19	43.31	-16.03	-7.21	1.92	1.80	Interest Payment - QUBHA
RWC	Reliance Worldwide	3255.19	4.28	3.88	4.33	HOLD	26.93	21.62	-17.70	24.55	1.83	2.19	N/A
SIQ	Smartgrp Corporation	735.83	5.75	3.79	6.93	HOLD	12.13	11.14	-23.72	8.91	5.81	6.25	N/A
SSM	Service Stream	818.78	2.04	2.00	2.55	STRONG BUY	14.32	14.32	1.06	0.00	4.48	4.62	N/A
SVW	Seven Group Holdings	6047.35	18.80	5.50	21.05	BUY	14.68	14.56	-6.33	-0.83	2.16	2.41	N/A
SYD	SYD Airport	15760.41	5.95	1.88	6.09	HOLD	-64.65	530.30	-155.37	112.19	0.05	2.14	N/A
TCL	Transurban Group	38580.76	14.22	0.85	14.03	HOLD	402.49	1436.36	-75.50	-71.98	3.29	2.85	N/A

➤ Consumer stocks:

Code	Company Name	Market Cap (\$m)	Price (\$)	Daily Price Change (%)	Consensus Target Price (\$)	Consensus Rating	2020 PE	2021 PE	2020 EPS GROWTH	2021 EPS GROWTH	2020 Div Yield	2021 Div Yield	Newsflash
ALG	Ardentleisuregrpltd	268.64	0.57	0.89	0.70	BUY	-5.37	-4.14	-406.01	-29.69	0.00	0.00	N/A
ALL	Aristocrat Leisure	19041.39	30.75	3.12	31.66	BUY	41.32	25.87	-43.88	59.73	0.14	1.45	N/A
APE	Eagers Automotive	2428.02	9.90	4.76	10.00	BUY	33.67	22.98	-26.13	46.56	0.60	2.80	N/A
ARB	ARB Corporation.	2287.14	28.50	-0.52	23.60	HOLD	47.14	35.31	-16.12	33.51	1.10	1.59	N/A
AX1	Accent Group Ltd	910.34	1.75	3.87	1.85	BUY	16.38	15.76	8.31	3.99	3.45	5.17	N/A
BAP	Bapcor Limited	2331.76	7.11	3.49	7.73	BUY	25.08	23.71	-15.93	5.78	1.62	2.31	N/A
BBN	Baby Bunting Grp Ltd	577.87	4.59	1.32	4.63	BUY	31.01	25.22	30.40	22.97	2.11	2.73	N/A
BRG	Breville Group Ltd	3546.94	26.20	1.83	27.46	HOLD	44.13	40.31	13.97	9.49	1.37	1.70	N/A
CCX	City Chic Collective	647.12	2.88	1.77	3.70	BUY	36.11	31.74	-2.15	13.79	0.00	0.65	N/A
CKF	Collins Foods Ltd	1191.46	10.25	0.29	10.65	BUY	30.42	26.16	-14.03	16.27	1.26	2.03	N/A
CTD	Corp Travel Limited	1857.38	17.33	1.70	14.57	BUY	61.34	291.55	-69.19	-78.96	1.04	0.08	N/A
CWN	Crown Resorts Ltd	5938.68	8.78	0.11	10.58	BUY	38.39	256.73	-57.89	-85.05	4.04	4.31	N/A
DMP	Domino Pizza Enterpr	6973.78	81.51	1.13	77.30	HOLD	47.45	40.40	3.16	17.44	1.40	1.74	N/A
FLT	Flight Centre Travel	2783.42	14.43	3.22	14.06	HOLD	-9.94	-17.33	-165.47	42.68	0.00	0.00	N/A
GEM	G8 Education Limited	819.96	1.03	5.10	1.38	BUY	12.23	18.88	-41.52	-35.22	0.00	3.49	N/A
GUD	G.U.D. Holdings	984.00	11.57	2.21	11.70	HOLD	19.78	18.41	-16.56	7.46	4.03	3.78	N/A
HVN	Harvey Norman	5644.41	4.65	2.65	5.00	BUY	13.68	11.82	9.97	15.71	4.48	6.44	N/A
IEL	Idp Education Ltd	5110.25	18.50	0.76	21.00	BUY	105.18	108.61	-34.68	-3.16	1.07	0.60	N/A
IVC	InvoCare Limited	1412.38	10.15	3.15	10.75	HOLD	37.89	26.61	-45.06	42.39	2.66	3.12	FY19 Final Dividend DRP Share Issue
JBH	JB Hi-Fi Limited	5308.76	47.24	2.23	47.00	HOLD	16.70	16.93	34.77	-1.37	3.70	3.96	N/A
JIN	Jumbo Interactive	735.65	11.90	1.02	13.89	BUY	30.10	29.05	-5.72	3.63	2.75	2.80	N/A
KGN	Kogan.Com Ltd	2114.55	20.31	1.45	22.00	BUY	68.89	42.26	59.93	63.03	1.09	1.72	N/A
KMD	Kathmandu Hold Ltd	797.63	1.18	4.44	1.25	BUY	18.77	15.98	-49.59	17.44	1.06	3.57	N/A
LOV	Lovisa Holdings Ltd	838.19	8.29	6.28	7.38	HOLD	20.27	38.18	18.57	-46.90	0.52	1.35	N/A
NCK	Nick Scall Limited	684.45	8.45	0.00	9.20	BUY	17.41	13.34	-5.88	30.49	5.31	6.43	QUOTED: Ex Dividend
PBH	Pointsbet Holdings	1767.69	10.59	3.72	12.65	HOLD	-39.40	-31.91	N/A	-23.50	0.00	0.00	N/A
PMV	Premier Investments	3374.48	21.79	2.49	20.50	HOLD	25.63	23.23	5.48	10.34	2.39	3.30	N/A
RDC	Redcape Hotel Group	469.37	0.83	-2.35	1.09	STRONG BUY	19.76	10.92	-46.15	80.95	5.66	8.37	N/A
SGR	The Star Ent Grp	2932.20	3.16	2.60	3.66	BUY	30.22	31.92	-56.87	-5.34	3.38	0.00	N/A
SKC	Skycity Ent Grp Ltd	2060.16	2.78	2.58	3.52	STRONG BUY	38.36	52.84	-68.66	-27.41	3.34	1.98	UPDATE ON SKYCITYS AUCKLAND PROPERTY
SLK	Sealink Travel Grp	1242.69	5.85	2.81	5.73	BUY	33.93	23.71	-27.44	43.10	1.83	2.25	N/A
SUL	Super Ret Rep Ltd	2377.75	10.91	3.61	11.52	BUY	14.88	14.45	-3.11	3.04	1.60	4.32	Becoming a substantial holder
TAH	TABCORP Holdings Ltd	7449.59	3.42	1.79	3.64	HOLD	25.40	23.52	-31.81	8.02	3.48	2.32	N/A
TPW	Temple & Webster Ltd	1457.48	12.20	0.83	11.40	BUY	174.29	73.85	577.64	136.00	0.00	0.00	N/A
WEB	Webjet Limited	1345.84	4.08	2.77	3.70	HOLD	87.03	-20.99	-89.74	-514.63	1.08	0.00	N/A
WES	Wesfarmers Limited	50546.60	45.26	1.53	48.70	HOLD	25.65	26.14	1.42	-1.88	3.29	3.38	N/A

➤ Staple stocks:

Code	Company Name	Market Cap (\$m)	Price (\$)	Daily Price Change (%)	Consensus Target Price (\$)	Consensus Rating	2020 PE	2021 PE	2020 EPS GROWTH	2021 EPS GROWTH	2020 Div Yield	2021 Div Yield	Newsflash
AZM	The A2 Milk Company	10381.39	14.23	1.79	16.35	HOLD	28.98	28.38	27.90	2.09	0.00	0.00	N/A
AAC	Australian Agricul.	672.08	1.10	-1.35	1.40	STRONG BUY	-35.48	-31.43	13.89	-12.90	0.00	0.00	N/A
AHY	Asaleo Care Limited	559.42	1.01	-1.94	1.24	BUY	14.39	13.72	27.17	4.84	2.28	4.83	N/A
BGA	Bega Cheese Ltd	1081.50	5.15	2.39	5.70	HOLD	40.51	24.33	-31.16	66.47	1.69	2.23	N/A
BKL	Blackmores Limited	1184.08	62.42	1.99	67.00	HOLD	55.85	36.19	-67.91	54.33	0.00	1.73	N/A
BUB	Bubs Aust Ltd	431.70	0.74	3.52	0.86	HOLD	-61.25	315.45	N/A	119.42	0.00	0.00	N/A
BWX	BWX Limited	597.25	4.39	2.57	5.02	BUY	36.66	32.95	30.87	11.27	0.93	1.13	N/A
CCL	Coca-Cola Amatil	6885.24	9.67	1.68	9.85	BUY	23.00	19.40	-19.26	18.57	2.68	4.23	N/A
CGC	Costa Group Holdings	1346.79	3.47	3.27	3.60	BUY	29.21	20.05	47.83	45.69	2.09	2.91	N/A
COL	Coles Group	22756.84	17.40	1.99	19.89	BUY	24.76	23.44	4.92	5.65	3.37	3.57	N/A
ELD	Elders Limited	1699.27	11.13	2.02	11.81	BUY	16.78	14.91	31.37	12.51	1.79	2.17	N/A
FNP	Freedom Food Ltd	834.10	3.01	0.00	3.27	HOLD	72.83	29.32	-46.74	148.42	0.00	0.85	N/A
GNC	GrainCorp Limited	851.34	3.85	3.49	4.75	BUY	-277.18	20.19	95.91	1472.71	0.10	2.77	N/A
ING	Inghams Group	1111.32	3.05	2.01	3.64	BUY	14.41	14.39	-24.90	0.14	4.57	5.08	N/A
MTS	Metcash Limited	2770.60	2.77	2.21	3.37	BUY	12.37	13.63	-2.29	-9.26	4.39	4.46	N/A
SHV	Select Harvests	527.64	5.46	0.00	7.18	BUY	22.73	15.78	-51.93	44.02	2.56	3.75	N/A
SM1	Synlait Milk Ltd	898.33	5.14	2.59	5.98	HOLD	12.39	12.73	-13.30	-2.65	0.00	0.00	N/A
TGR	Tassal Group Limited	729.10	3.56	3.19	4.75	BUY	11.16	10.60	-0.78	5.33	5.15	5.24	2020 Sustainability Highlights
TWE	Treasury Wine Estate	6326.17	9.02	2.85	12.35	BUY	20.54	19.01	-28.27	8.03	3.01	3.39	N/A
UMG	United Malt Group	1223.64	4.15	1.47	4.73	BUY	21.58	17.82	N/A	21.09	0.63	2.93	N/A
WOW	Woolworths Group Ltd	46090.33	37.13	1.75	42.00	BUY	28.46	25.97	-1.31	9.59	2.57	2.80	N/A

➤ Healthcare stocks:

Code	Company Name	Market Cap (\$m)	Price (\$)	Daily Price Change (%)	Consensus Target Price (\$)	Consensus Rating	2020 PE	2021 PE	2020 EPS GROWTH	2021 EPS GROWTH	2020 Div Yield	2021 Div Yield	Newsflash
ANN	Ansell Limited	4749.09	37.77	2.22	41.00	HOLD	23.05	20.53	3.27	12.26	1.88	2.07	N/A
API	Australian Pharm.	495.12	1.04	3.48	1.10	SELL	16.30	12.01	-40.79	35.74	0.96	6.50	N/A
AVH	Avita Therapeutics	527.81	7.00	1.45	15.00	BUY	-15.79	-10.18	-23.15	-55.05	0.00	0.00	N/A
COH	Cochlear Limited	12966.06	199.05	0.91	204.00	HOLD	75.69	61.28	-43.41	23.50	0.82	0.60	N/A
CSL	CSL Limited	129513.70	289.21	1.59	315.87	BUY	44.74	41.80	3.38	7.02	1.00	1.07	N/A
CUV	Clinuvel Pharmaceut.	1128.04	24.61	7.80	43.09	STRONG BUY	N/A	121.23	N/A	N/A	N/A	0.07	N/A
EHE	Estia Health Ltd	371.04	1.49	4.58	1.57	HOLD	14.45	21.89	-36.70	-34.02	5.48	3.89	N/A
FPH	Fisher & Paykel H.	17595.18	31.20	2.16	36.00	BUY	69.28	51.00	30.39	35.85	0.88	1.08	N/A
HLS	Healius	2161.84	3.54	2.02	3.46	HOLD	33.69	22.20	-33.18	51.75	1.27	1.78	N/A
IDX	Integral Diagnostics	800.14	4.19	3.97	4.60	BUY	27.61	22.95	-8.82	20.28	2.34	2.69	N/A
MSB	Mesoblast Limited	1871.21	3.56	11.60	5.45	HOLD	-19.81	-24.69	50.74	19.75	0.00	0.00	N/A
MVF	Monash IVF Group Ltd	239.63	0.63	1.63	0.73	BUY	13.38	13.21	-44.41	1.31	2.06	4.80	N/A
MVP	Medical Developments	329.43	5.26	4.78	8.61	BUY	685.79	375.71	-43.89	82.53	0.70	0.38	N/A
MYX	Mayne Pharma Ltd	629.65	0.38	1.33	0.38	BUY	-253.33	32.67	-108.51	875.33	0.00	0.00	N/A
NAN	Nanosonics Limited	1708.69	5.75	1.23	5.50	HOLD	129.04	138.35	25.52	-6.73	0.00	0.00	N/A
OPT	Opthea Limited	761.72	2.86	1.06	4.90	BUY	-19.50	65.49	-56.03	129.77	0.00	0.00	Opthea to Appoint Dr Jeremy Levin as Chairman of the Board
PAR	Paradigm Bio.	600.78	2.77	4.14	2.54	HOLD	-36.69	-18.97	-98.68	-93.38	0.00	0.00	N/A
PME	Pro Medicus Limited	2745.97	26.74	1.48	29.00	HOLD	115.76	94.44	34.41	22.57	0.45	0.53	N/A
PNV	Polynovo Limited	1454.39	2.25	2.27	2.50	BUY	-539.57	435.20	10.71	223.98	0.00	0.00	N/A
RHC	Ramsay Health Care	15309.90	69.36	3.69	70.00	HOLD	40.79	34.49	-40.63	18.25	0.94	1.30	N/A
RMD	ResMed Inc.	8292.99	23.60	1.07	26.20	HOLD	37.33	36.02	25.10	3.62	0.97	1.01	N/A
SHL	Sonic Healthcare	15812.38	33.67	1.66	35.10	BUY	31.00	23.61	-6.40	31.29	2.24	3.00	N/A
SIG	Sigma Health Ltd	603.83	0.58	1.75	0.72	BUY	45.78	16.78	-70.42	172.85	3.05	0.52	N/A
SPL	Starpharma Holdings	549.81	1.50	1.69	2.03	STRONG BUY	-41.67	-61.22	-9.09	31.94	0.00	0.00	Change in Directors Interest Notice - R Thomas
VRT	Virtus Health Ltd	321.56	4.11	2.75	3.70	BUY	16.20	16.10	-27.98	0.59	3.16	3.73	N/A

➤ Bank stocks:

Code	Company Name	Market Cap (\$m)	Price (\$)	Daily Price Change (%)	Consensus Target Price (\$)	Consensus Rating	2020 PE	2021 PE	2020 EPS GROWTH	2021 EPS GROWTH	2020 Div Yield	2021 Div Yield	Newsflash
AFG	Aust Finance Grp	555.55	2.36	14.01	2.08	BUY	15.41	16.74	11.33	-7.94	3.62	3.94	N/A
ANZ	ANZ Banking Grp Ltd	48513.52	17.80	4.22	20.00	BUY	13.22	11.72	-39.78	12.86	3.21	4.46	N/A
BEN	Bendigo and Adelaide	3179.90	6.33	5.50	6.83	SELL	10.96	12.47	-28.57	-12.13	5.79	4.04	N/A
BOQ	Bank of Queensland.	2553.37	5.91	5.16	6.00	HOLD	12.54	12.69	-40.13	-1.22	1.56	4.59	N/A
CBA	Commonwealth Bank.	112799.66	65.99	3.56	67.56	HOLD	15.77	16.92	-14.18	-6.77	4.11	3.85	N/A
GMA	Genworth Mortgage	627.02	1.56	2.63	2.37	HOLD	-9.97	12.00	-156.91	183.07	0.80	4.65	N/A
MYS	MyState Limited	336.83	3.66	0.00	4.30	BUY	10.80	10.05	-0.59	7.45	6.81	7.04	N/A
NAB	National Aust. Bank	57543.73	18.19	4.00	20.50	BUY	14.20	12.48	-30.46	13.75	3.41	4.48	Shareholder resolutions for consideration at the 2020 AGM
VUK	Virgin Money UK PLC	1219.47	1.35	5.49	1.80	HOLD	14.71	7.24	-80.77	103.34	0.00	1.09	Director/PDMR Shareholding
WBC	Westpac Banking Corp	59845.62	17.29	4.35	19.80	HOLD	18.27	11.67	-52.24	56.55	1.73	4.61	N/A

➤ Diversified Financials / Insurance stocks:

Code	Company Name	Market Cap (\$m)	Price (\$)	Daily Price Change (%)	Consensus Target Price (\$)	Consensus Rating	2020 PE	2021 PE	2020 EPS GROWTH	2021 EPS GROWTH	2020 Div Yield	2021 Div Yield	Newsflash
AEF	Australian Ethical	511.36	4.67	2.64	-	-	N/A	N/A	N/A	N/A	N/A	N/A	N/A
AMP	AMP Limited	4553.49	1.37	3.40	1.55	HOLD	13.76	12.29	-43.14	12.00	7.40	4.18	N/A
ASX	ASX Limited	15568.92	81.35	1.16	73.00	SELL	31.33	32.60	1.34	-3.88	2.87	2.76	N/A
AUB	AUB Group Ltd	1218.14	16.82	2.56	17.00	BUY	24.42	21.46	7.70	13.79	2.74	3.06	N/A
CCP	Credit Corp Group	1151.77	17.73	3.62	22.03	BUY	13.24	17.34	-5.22	-23.62	3.00	2.89	N/A
CGF	Challenger Limited	2553.82	3.97	5.03	4.50	HOLD	7.84	9.98	-11.37	-21.40	4.81	5.22	N/A
CNI	Centuria Capital	1181.07	2.23	1.36	2.30	STRONG BUY	18.63	20.04	-5.77	-7.04	4.39	3.76	N/A
ECX	Eclixp Group Ltd	513.02	1.72	7.17	1.70	BUY	13.76	12.96	17.04	6.20	0.00	1.84	N/A
FXL	FlexiGroup Limited	500.22	1.09	7.43	1.36	HOLD	10.45	10.23	-47.24	2.18	4.49	2.44	N/A
HUB	HUB24 Ltd	1122.40	17.43	-2.30	16.50	BUY	81.12	59.77	38.51	35.72	0.45	0.66	N/A
IAG	Insurance Australia	10191.72	4.63	4.99	5.85	BUY	32.57	14.85	-64.46	119.27	2.25	4.92	N/A
IFL	IOOF Holdings Ltd	1980.44	3.21	5.25	4.61	BUY	9.66	12.16	-35.24	-20.59	8.15	5.45	Trading Policy
JHG	Janus Henderson	1223.80	34.92	6.46	34.43	BUY	10.26	10.43	-7.46	-1.60	6.00	6.08	Janus Henderson Group - Triun SEC Form 13-D
MFG	Magellan Fin Grp Ltd	10403.37	58.17	2.59	59.50	HOLD	24.34	23.78	18.82	2.35	3.72	3.84	N/A
MNY	Money3 Corporation	400.22	2.15	-0.46	2.86	BUY	15.19	11.60	-29.34	30.98	4.65	5.19	N/A
MPL	Medibank Private Ltd	7077.79	2.63	2.33	2.80	HOLD	20.48	19.39	-22.11	5.63	4.36	4.40	N/A
MQG	Macquarie Group Ltd	43055.08	122.65	2.98	130.92	BUY	14.98	20.17	-5.84	-25.75	4.37	2.96	N/A
NGI	Navigator Global Ltd	241.60	1.51	1.34	2.27	STRONG BUY	6.28	10.46	-14.29	-39.98	14.27	9.40	N/A
NHF	NIB Holdings Limited	1900.37	4.37	5.05	4.80	BUY	18.10	16.72	-31.17	8.23	3.89	3.63	N/A
NWL	Netwealth Group	3662.88	15.68	1.75	12.13	HOLD	87.87	74.04	21.64	18.68	0.90	1.04	N/A
OBL	Omni Bridgeway Ltd	934.94	3.79	2.99	5.45	BUY	-168.44	7.50	40.94	2346.67	1.58	1.85	N/A
OFX	OFX Group Ltd	276.79	1.15	1.32	-	-	19.17	19.17	-23.57	0.00	4.35	4.35	N/A
PDL	Pendal Group Ltd	1768.96	5.56	1.46	6.89	BUY	11.70	12.52	-7.59	-6.54	6.86	6.80	N/A
PNI	Pinnacle Investment	904.33	4.92	1.86	6.01	BUY	28.52	26.74	6.81	6.67	2.94	3.19	N/A
PPT	Perpetual Limited	1579.99	29.30	4.79	34.80	BUY	15.24	14.79	-25.03	3.01	5.86	4.97	N/A
PTM	Platinum Asset	1853.91	3.29	4.11	3.20	SELL	13.07	15.24	-7.42	-14.27	7.50	6.37	N/A
QBE	QBE Insurance Group	12590.60	8.90	3.97	12.18	BUY	-21.00	12.73	-149.53	264.93	1.79	4.94	N/A
SDF	Steadfast Group Ltd	2744.38	3.31	4.75	3.90	BUY	21.44	19.82	12.01	8.17	2.65	3.12	N/A
SUN	Suncorp Group Ltd	10761.86	8.73	3.80	10.26	BUY	16.62	13.42	-37.70	23.91	4.21	5.18	N/A
ZIP	Zip Co Ltd.	3304.57	6.76	4.16	8.35	HOLD	-67.18	-62.95	-262.63	-6.71	0.00	0.00	N/A

➤ Property stocks:

Code	Company Name	Market Cap (\$m)	Price (\$)	Daily Price Change (%)	Consensus Target Price (\$)	Consensus Rating	2020 PE	2021 PE	2020 EPS GROWTH	2021 EPS GROWTH	2020 Div Yield	2021 Div Yield	Newsflash
ABP	Abacus Property Grp.	1930.55	2.97	2.41	2.90	BUY	15.92	16.39	-33.95	-2.89	6.15	5.93	N/A
ADI	Apn Industria REIT	515.54	2.62	0.38	2.73	BUY	13.30	13.12	7.65	1.40	6.59	6.55	N/A
ARF	Arena REIT.	900.34	2.70	2.27	2.82	BUY	17.06	17.02	14.08	0.24	5.19	5.30	N/A
AVN	Aventus Group	1311.21	2.38	1.28	2.50	BUY	13.57	13.27	-2.56	2.24	5.01	5.91	N/A
BWP	BWP Trust	2601.65	4.12	1.73	3.23	SELL	22.98	22.86	-2.69	0.56	4.41	4.39	N/A
CHC	Charter Hall Group	5999.21	13.15	2.10	13.10	BUY	19.54	24.83	45.13	-21.31	2.72	2.88	N/A
CIP	Centuria I REIT	1578.29	3.17	2.26	3.18	HOLD	16.89	17.99	-43.38	-6.14	5.78	5.47	N/A
CLW	Chtr H Lwr	2543.29	5.18	2.37	5.47	BUY	17.87	17.56	6.94	1.79	5.41	5.63	N/A
CMW	Cromwell Prop	2234.55	0.89	3.51	1.01	HOLD	11.40	12.69	0.96	-10.13	8.90	8.90	N/A
COF	Centuria Office REIT	1034.19	2.03	1.00	2.27	BUY	11.29	11.20	-14.55	0.83	8.75	8.18	N/A
CQE	Charter Hall Soc In	998.23	2.87	3.61	3.20	BUY	16.73	18.91	-11.06	-11.49	5.57	5.20	N/A
CQR	Charter Hall Retail	1986.89	3.57	2.59	3.55	HOLD	12.14	13.90	-5.13	-12.65	6.97	6.36	N/A
CWP	Cedar Woods Prop.	445.06	5.60	1.27	5.80	HOLD	20.29	14.66	-57.11	38.41	3.21	3.66	Change of Directors Interest Notice NJB
DXS	Dexus	9951.76	9.27	1.64	9.57	BUY	14.98	15.07	1.18	-0.60	5.33	5.10	N/A
GDI	GDI Property Grp	577.86	1.07	0.00	1.48	STRONG BUY	N/A	19.72	N/A	N/A	N/A	7.32	N/A
GMG	Goodman Group	33475.42	18.39	1.49	18.73	HOLD	31.98	29.69	12.11	7.72	1.63	1.63	N/A
GOZ	Growthpoint Property	2624.23	3.54	4.12	3.56	BUY	15.16	14.86	1.19	2.01	6.19	5.71	N/A
GPT	GPT Group	7850.16	4.14	2.73	4.35	BUY	16.11	13.61	-20.27	18.37	4.70	5.73	N/A
HPI	Hotel Property	496.93	3.18	0.95	3.15	BUY	15.90	15.90	2.56	0.00	6.29	6.16	N/A
IAP	Investec Aust Prop	788.57	1.30	0.78	1.70	-	14.94	14.13	N/A	5.75	6.88	6.50	N/A
INA	Ingenia Group	1505.86	4.66	1.08	5.19	BUY	22.09	21.83	10.24	1.18	2.36	2.24	N/A
LIC	Lifestyle Communit.	1008.86	9.89	2.49	9.90	BUY	37.25	27.74	-30.86	34.27	0.61	0.58	N/A
LLC	Lendlease Group	7474.59	11.31	4.14	13.77	BUY	79.59	17.41	-82.17	357.11	2.89	2.69	N/A
MGR	Mirvac Group	8820.13	2.32	3.57	2.41	BUY	14.74	16.44	-5.39	-10.33	4.20	4.32	N/A
NSR	National Storage	1882.73	1.89	2.16	1.83	HOLD	22.88	23.68	-16.06	-3.35	4.24	4.20	Change in substantial holding
RFF	Rural Funds Group	774.84	2.27	-0.87	2.43	BUY	14.81	15.36	10.98	-3.59	4.74	4.97	N/A
SCG	Scentre Grp	11470.74	2.30	4.07	2.35	HOLD	15.08	11.84	-39.02	27.38	3.77	6.81	N/A
SCP	SCA Property Group	2368.46	2.27	3.18	2.31	HOLD	15.04	15.87	-6.21	-5.23	5.83	5.53	N/A
SGP	Stockland	9253.52	4.07	4.90	4.02	HOLD	12.63	13.32	-9.98	-5.18	5.98	5.96	N/A
URW	UnibailRodawestfield	562.42	2.47	1.65	3.88	HOLD	3.35	3.48	-27.64	-3.74	10.85	15.65	N/A
VCC	Vicinity Centres	6327.66	1.45	4.32	1.38	HOLD	9.94	16.84	-18.15	-40.99	5.57	5.66	N/A
WPR	Waypoint REIT	2150.96	2.80	2.19	2.88	BUY	18.62	17.54	0.94	6.12	5.36	5.70	N/A

➤ IT stocks:

Code	Company Name	Market Cap (\$m)	Price (\$)	Daily Price Change (%)	Consensus Target Price (\$)	Consensus Rating	2020 PE	2021 PE	2020 EPS GROWTH	2021 EPS GROWTH	2020 Div Yield	2021 Div Yield	Newsflash
AD8	Audinate Group Ltd	426.72	5.90	5.17	5.75	BUY	-607.62	-152.57	-331.19	-298.25	0.00	0.00	N/A
ALU	Altium Limited	4594.28	35.23	0.43	35.34	HOLD	76.30	61.12	-23.62	24.83	1.24	1.47	Altium Pivots Org to Cloud - Expands Leadership Capacity
APT	Afterpay Limited	22643.50	79.52	-0.16	92.98	BUY	-917.29	998.74	-120.64	191.84	0.00	0.00	N/A
APX	Appen Limited	4101.02	34.15	1.31	40.00	BUY	56.65	39.73	15.51	42.58	0.32	0.46	N/A
BVS	Bravura Solution Ltd	842.83	3.46	1.47	4.80	HOLD	21.31	20.47	9.68	4.11	3.19	3.41	Change in substantial holding
CDA	Codan Limited	2023.47	11.12	-0.80	10.50	BUY	31.79	25.81	41.79	23.17	1.62	2.06	N/A
CPU	Computershare Ltd	6609.55	12.51	2.37	14.21	HOLD	16.32	17.63	-24.88	-7.46	3.20	3.37	N/A
DDR	Dicker Data Limited	1342.30	7.80	0.00	-	-	N/A	N/A	N/A	N/A	N/A	N/A	N/A
DTL	Data#3 Limited	994.68	6.47	0.15	4.20	HOLD	42.43	36.55	27.08	16.07	2.16	2.47	N/A
ELO	Elmo Software	429.16	5.12	2.20	6.70	HOLD	-23.55	-19.10	-93.67	-23.28	0.00	0.00	N/A
EML	EML Payments Ltd	1100.66	3.06	0.33	4.15	BUY	35.27	29.82	86.84	18.27	0.00	0.00	N/A
HSN	Hansen Technologies	761.41	3.92	2.35	4.20	BUY	19.70	15.96	17.06	23.45	1.57	2.56	N/A
IFM	Infomedia Ltd	586.03	1.58	0.64	2.00	BUY	29.08	28.55	6.74	1.85	2.62	2.57	N/A
IRE	IRESS Limited	1824.22	9.65	2.22	11.62	HOLD	24.94	23.59	-8.98	5.72	4.48	4.67	N/A
IRI	Integrated Research	594.00	3.60	4.35	4.25	HOLD	25.71	23.53	11.11	9.29	2.22	2.22	N/A
LNK	Link Admin Hldg	1986.96	3.85	2.94	4.38	HOLD	15.08	17.10	-31.34	-11.84	3.06	2.98	N/A
MP1	Megaport Limited	2468.80	15.66	-2.13	17.15	BUY	-65.25	-81.90	2.17	20.33	0.00	0.00	N/A
NEA	Nearmap Ltd	1114.10	2.39	3.02	3.13	BUY	-29.51	-40.42	-636.36	27.00	0.00	0.00	N/A
NXT	Nextdc Limited	5524.33	12.15	0.25	13.40	BUY	-324.95	-1305.05	-169.38	75.10	0.00	0.00	N/A
TNE	Technology One	2557.56	8.01	0.00	8.48	HOLD	39.91	35.90	15.02	11.18	1.60	1.83	N/A
TYR	Tyro Payments	1703.79	3.60	5.57	3.80	HOLD	-81.21	-104.86	N/A	22.56	0.00	0.00	COVID-19 Trading Update 29 - Week Ended 2 October 2020
WTC	WiseTech Global Ltd	8362.62	25.96	0.50	26.00	HOLD	118.95	94.49	21.32	25.89	0.13	0.17	N/A
XRO	Xero Ltd	14740.40	104.63	1.39	85.00	HOLD	925.77	397.20	423.74	133.07	0.00	0.00	Appendix 3K - Steven Aldrich

➤ **Communication stocks:**

Code	Company Name	Market Cap (\$m)	Price (\$)	Daily Price Change (%)	Consensus Target Price (\$)	Consensus Rating	2020 PE	2021 PE	2020 EPS GROWTH	2021 EPS GROWTH	2020 Div Yield	2021 Div Yield	Newsflash
CAR	Carsales.Com Ltd.	5165.53	21.22	1.10	19.17	HOLD	43.31	36.90	-9.23	17.38	1.96	2.25	N/A
CNU	Chorus Limited	3458.14	7.90	1.54	-	-	70.45	74.21	-6.84	-5.07	2.85	2.97	N/A
DHG	Domain Holdings Aus	2185.15	3.79	1.34	3.50	HOLD	123.69	72.12	-57.11	71.51	0.79	0.87	N/A
EVT	Event Hospitality	1532.97	9.75	2.52	9.35	BUY	57.86	-325.00	-75.79	-117.80	2.15	1.59	N/A
NEC	Nine Entertainment	2950.33	1.77	2.31	2.00	BUY	20.21	20.24	-36.02	-0.14	3.95	3.53	N/A
NWS	News Corp.	903.77	19.77	1.96	25.00	BUY	79.75	55.24	-59.05	44.37	1.29	1.49	SEC Form 4
OML	Ooh!Media Limited	727.90	1.25	1.22	1.25	BUY	-47.16	31.44	-116.49	250.00	0.00	0.48	N/A
REA	REA Group	14904.84	114.26	0.97	108.00	HOLD	56.91	49.18	-15.40	15.70	0.92	1.06	N/A
SEK	Seek Limited	7544.26	21.68	1.45	20.45	HOLD	74.18	141.19	-47.41	-47.46	0.80	0.45	SEEK appoints Professor Linda Kristjanson AO to the Board
SLC	Superloop Limited	345.74	0.94	-0.53	1.23	BUY	-10.04	-14.33	-30.69	29.91	0.13	0.10	N/A
SPK	Spark New Zealand	7926.01	4.28	0.00	-	HOLD	20.39	20.99	2.42	-2.86	5.49	5.23	N/A
SKL	Sthn Cross Media	409.53	0.15	-3.23	0.18	HOLD	6.47	11.19	-67.42	-42.24	8.00	0.00	N/A
TLS	Telstra Corporation.	32944.44	2.83	2.17	3.50	BUY	15.35	20.74	-9.31	-26.02	5.63	5.39	N/A
TPG	TPG Telecom Limited	13573.19	7.52	3.01	8.71	HOLD	51.13	37.77	N/A	35.35	0.81	1.63	N/A
UWL	Uniti Group Ltd	698.24	1.41	0.36	1.94	STRONG BUY	28.53	21.45	354.73	33.02	0.00	0.00	N/A
VOC	Vocus Group Ltd	2211.52	3.72	4.49	3.40	HOLD	21.88	21.65	4.41	1.09	0.00	0.00	N/A
VRL	Village Roadshow Ltd	427.71	2.20	0.46	2.20	HOLD	-12.22	-18.46	-254.28	33.78	0.45	0.00	N/A

➤ **Utility stocks:**

Code	Company Name	Market Cap (\$m)	Price (\$)	Daily Price Change (%)	Consensus Target Price (\$)	Consensus Rating	2020 PE	2021 PE	2020 EPS GROWTH	2021 EPS GROWTH	2020 Div Yield	2021 Div Yield	Newsflash
AGL	AGL Energy Limited.	8410.96	13.85	2.59	14.62	HOLD	11.05	13.94	-19.06	-20.72	6.90	7.08	N/A
APA	APA Group	12176.50	10.62	2.91	11.24	HOLD	40.16	40.62	2.37	-1.13	4.71	4.73	N/A
AST	AusNet Services Ltd	7168.32	2.00	4.71	1.90	HOLD	27.13	27.84	5.46	-2.58	5.04	4.62	N/A
SKI	Spark Infrastructure	3597.75	2.12	2.42	2.28	HOLD	46.21	57.81	-23.90	-20.07	6.49	5.80	N/A

Disclaimer

This document was prepared by Deep Data Analytics. Deep Data Analytics and its related bodies corporate ("DDA"), its directors and/or employees charge a subscription for this report. Deep Data Analytics as principal, its directors and/or employees and their associates may hold securities in the companies mentioned in this report. Deep Data Analytics may seek to do business with any of the companies outlined in this report and should not be considered independent. This document contains Deep Data Analytics proprietary processed data and publicly available information. The information has not been verified or audited, and you are strongly advised to make your own independent assessment and investigation in respect of any matters contained in the document, including to seek independent professional advice. The document has been provided to you for your general information purposes only. It does not consider your particular investment objectives, financial situation or other specific needs. This report has been provided to you on the condition that it is purely general advice and not to be considered as personal advice at any level.

Deep Data Analytics or their respective directors, officers, employees or shareholders makes any representation or warranty, expressed or implied, and takes no responsibility, in respect of the accuracy, reliability, completeness or thoroughness of any of the information contained in this document. Each of those parties, to the maximum extent permitted by law, expressly disclaims, and as a recipient, you expressly release each of those parties from, all liabilities, including (without limitation) liability for negligence in respect of, any part of the information contained in the document. No such parties are under any obligation to update any information in this document or correct any inaccuracies or omissions that may exist or become apparent. Neither this document nor any additional information which may subsequently be provided to a recipient shall constitute or form part of any offer, solicitation, invitation, advice or recommendation to sell or acquire any securities or assets.

Deep Data Analytics provides this financial advice as an honest and reasonable opinion held at a point in time about an investment's risk profile and merit and the information is provided by the Deep Data Analytics in good faith. The views of the adviser(s) do not necessarily reflect the views of the AFS Licensee. Deep Data Analytics has no obligation to update the opinion unless Deep Data Analytics is currently contracted to provide such an updated opinion. Deep Data Analytics does not warrant the accuracy of any information it sources from others. All statements as to future matters are not guaranteed to be accurate and any statements as to past performance do not represent future performance. Assessment of risk can be subjective. Portfolios of equity investments need to be well diversified and the risk appropriate for the investor. Equity investments in listed or unlisted companies yet to achieve a profit or with an equity value less than \$50 million should collectively be a small component of a balanced portfolio, with smaller individual investment sizes than otherwise. Investors are responsible for their own investment decisions, unless a contract stipulates otherwise. Deep Data Analytics does not stand behind the capital value or performance of any investment. Subject to any terms implied by law and which cannot be excluded, Deep Data Analytics shall not be liable for any errors, omissions, defects or misrepresentations in the information (including by reasons of negligence, negligent misstatement or otherwise) or for any loss or damage (whether direct or indirect) suffered by persons who use or rely on the information. If any law prohibits the exclusion of such liability, Deep Data Analytics limits its liability to the re-supply of the Information, provided that such limitation is permitted by law and is fair and reasonable.

Copyright © Deep Data Analytics. All rights reserved. This material is proprietary to Deep Data Analytics and may not be disclosed to third parties. Any unauthorized use, duplication or disclosure of this document is prohibited. The content has been approved for distribution by Deep Data Analytics (ABN 67 159 532 213 AFS Representative No. 1282992) which is a corporate approved representative of BR Securities (ABN 92 168 734 530 and holder of AFSL No. 456663). Deep Data Analytics is the business name of ABN 67 159 532 213.