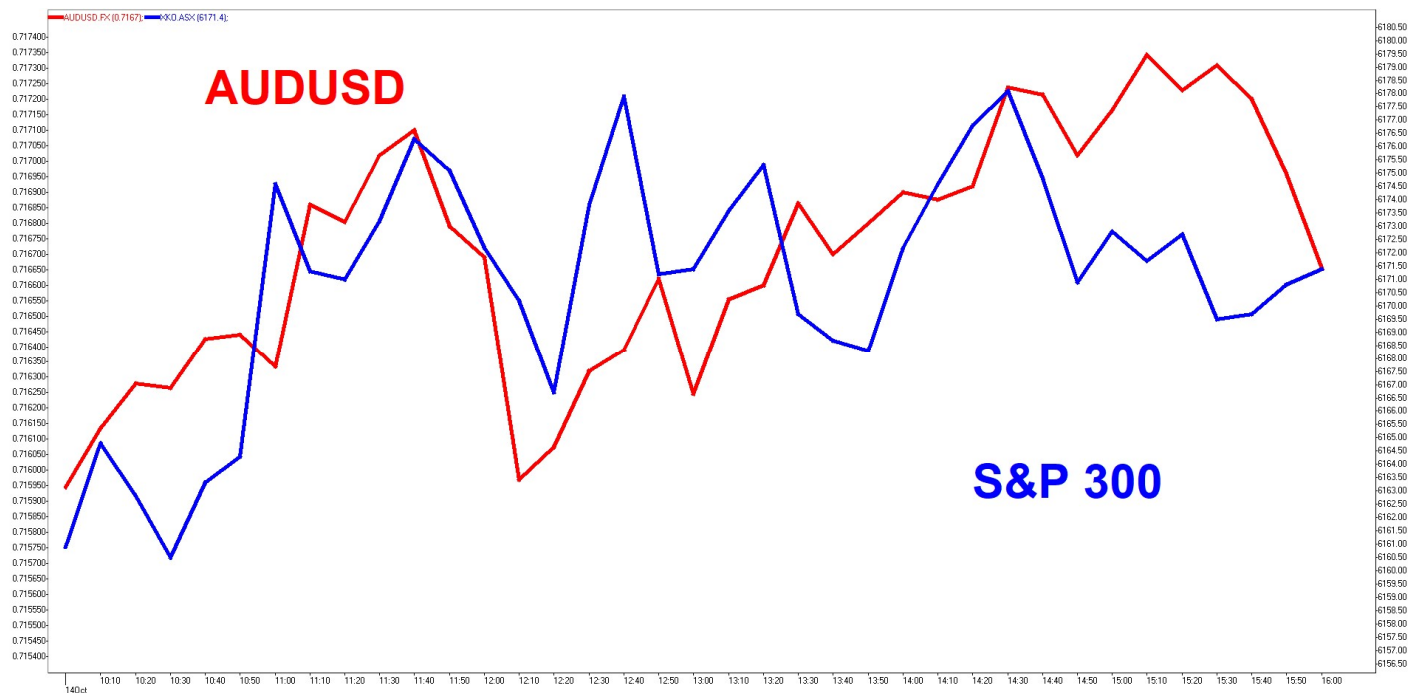


SUNSET STRIP

DEEP DATA ANALYTICS

INVESTMENT MOTTO: "Life is all about cycles. You evolve with the cycles or they run over you."

MARKET SNAPSHOT AND INTRADAY CHART



Security	Last	+/-	%	Security	Last	+/-	%	Security	Last	+/-	%
S&P 300	6162.60	-14.30	-0.23	DXY	93.5700	0.0500	0.05	SPTGLD	1894.34	3.53	0.19
S&P 200	6179.20	-16.50	-0.27	AUDUSD	0.7166	0.0005	0.06	TWI	60.90	-0.30	-0.49
All Ords	6387.40	-12.80	-0.20	NZDAUD	0.9290	0.0005	0.06	WTIS	40.07	-0.13	-0.32
Small Ords	2907.80	11.90	0.41	GBPAUD	1.8021	-0.0047	-0.26	BRENT	42.35	-0.07	-0.17
Micro Cap	1772.40	9.40	0.53	EURAUD	1.6386	-0.0015	-0.09	COPP3M	6695.00	-75.50	-1.12
NZ50G	12543.61	89.76	0.72	EURUSD	1.1742	-0.0003	-0.03	NICK3M	15195.00	-62.00	-0.41
JAPAN	23610.99	9.21	0.04	USDJPY	105.4375	-0.0250	-0.02	ZINC	2431.50	-7.00	-0.29
KOSPI	2381.83	-21.32	-0.89	CNYUSD	0.1483	0.0001	0.10	Security	Last	+/-	%
SING	2553.44	-14.21	-0.55	Security	Last	+/-	%	DOWFUT	28635.00	50.00	0.17
SHANGHAI	3339.72	-20.03	-0.60	USBON	0.7272	-0.0481	-6.20	NASFUT	12129.75	35.75	0.30
HNGKNG	24629.29	-20.39	-0.08	USLBR	1.5117	-0.0631	-4.01	SPFUT	3511.75	7.00	0.20
GERMAN	13018.99	-119.42	-0.91	BOND10	0.8390	-0.0110	-1.29				
CAC40	4947.61	-31.68	-0.64	BBSR3M	0.0836	0.0036	4.50				
FTSE	5969.71	-31.67	-0.53	VIX	26.07	1.00	3.99				
DOWJON	28679.81	-157.71	-0.55	XVI	20.97	-0.72	-3.32				
NASDAQ	11863.90	-12.36	-0.10								
SP500	3511.93	-22.29	-0.63								

Sources: AFR, AAP, ASX, Bloomberg, CNBC, CNN, FactSet, Hedgeye, IRESS, Market Watch, Thomson Reuters, S&P, SMH, Trading Economics

MARKET COMMENTARY:

1. Local market had another aimless negative day with global investors dominating the trade chasing AUDUSD. It started negative on US lead and then recovering through the day before closing lower. Three main macro catalysts in play are US election, US stimulus and Covid 19 pandemic. US election has started to tighten up after being assumed to be in Democrats favour. In a two horse race, it always tightens up. The electoral voting system, pandemic restrictions, mail in voting and legal challenges means this will be a mess for weeks after the election. US stimulus is not even being negotiated as political games are the main show. Pandemic is rising in most parts of the world and US is one of the worst countries in managing the spread. US reporting season has started with numbers being weak but beating expectations and underperforming. The market multiples are so high that under playing the forecast data is already in the price. Momentum is a beautiful dream that turns to a nightmare when fundamentals are not backing it!!!

Banks and Resources were negative while Health Care and Consumer sectors were positive. Federal government is out talking the benefit of a budget that is going to deliver very little reform while locking in debt for 60-80 years. It all makes sense if rates remain this low and unemployment doesn't get worse from here. Sadly...that won't be the case. The Global economy is really sick and that's why Central banks around the world are cutting rates to nothing and pumping trillions into the economy. The slide started before Covid and it will do damage well after a potential vaccine as the main issue is structural and no health...but political spin is all about deflecting facts.

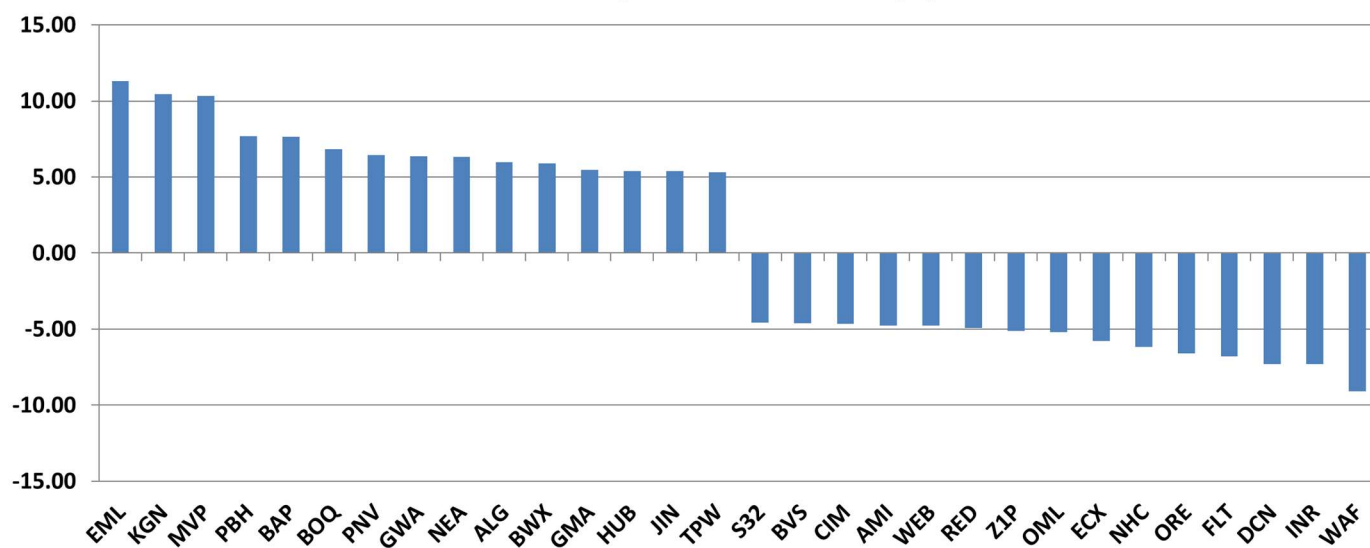
Index	Last	+/-	%	Index	Last	+/-	%
S&P/ASX 20	3333.4	-12.4	-0.37	S&P/ASX 300	6162.6	-14.3	-0.23
S&P/ASX 50	5902.5	-26.9	-0.45	All Ordinaries(500)	6387.4	-12.8	-0.2
S&P/ASX All Aust 50	5860.2	-27.2	-0.46	S&P/ASX MidCap 50	7788.5	23	0.3
S&P/ASX 100	5084.9	-16.6	-0.33	S&P/ASX Small Ordinaries	2907.8	11.9	0.41
S&P/ASX 200	6179.2	-16.5	-0.27	SFE Futures 200	6203.0	0	0
S&P/ASX All Aust 200	6133.2	-16.1	-0.26				
S&P/ASX 200 Energy	6656.3	-58.1	-0.87	S&P/ASX 200 Financials	4867.7	-48.4	-0.98
S&P/ASX 200 Materials	14080.2	-88.5	-0.62	S&P/ASX 200 Info Tech	2011.3	21.8	1.1
S&P/ASX 200 Industrials	5879.8	-59.1	-1	S&P/ASX 200 Telecom Serv.	1184.7	-10.5	-0.88
S&P/ASX 200 Cons. Discr	2823.8	18.8	0.67	S&P/ASX 200 Utilities	7130.8	-10.8	-0.15
S&P/ASX 200 Cons. Staple	12662.6	85.9	0.68	S&P/ASX 200 Prop. Trusts	1356.5	-7.8	-0.57
S&P/ASX 200 Health Care	44487.3	564.4	1.28	S&P/ASX 200 Fin.-x-Prop Trusts	5429.1	-54	-0.98

US market overnight faded through the day to end down 160. Everything was down except bonds and US\$. Oil had a bounce on supply side risk with weather in US and labor strike in Norway... despite OPEC downgrading demand outlook. White House latest stimulus plan was dead before it started. China data remains stable to positive while US economic data shows gradual fade. EU and Asia are going back into select lockdown restrictions. US reporting season started well but stocks are down. The numbers are bad but better than expected as analyst forecast are stupid low while multiples were extremely high. Usually markets fall into election and run after on certainty but as with everything in 2020... we may have the opposite. We are near all time high. The election is going to be prolonged process of uncertainty with a reality star struggling...going to legal challenges and volatility. Every sector is down with banks and property leading the falls. Markets are starting to accept our medium term lower USD and higher Euro and AUD!!!

Remain nimble, contrarian and cautiously pragmatic with elevated global macro risks!!! Buckle up...it's going to get bumpy...new month/quarter has started!!!

2. Movers and Shakers in S&P 300 >

S&P 300 Best/Worst 15 Performers (%)



3. Market sentiment from CNN >



4. **Australian Ethical (AEF +4.88%)** > Australian Ethical increased funds under management (FUM) by 6.5% to \$4.32bn for the quarter ended 30 September 2020, up from \$4.05bn as at 30 June 2020. The increase was driven by solid netflows and positive investment performance and includes outflows of \$0.03bn following the Federal Government's changes to early release of superannuation conditions. **ASX**
5. **AFG (AFG -1.75%)** > AFG CEO David Bailey explained the results: "The first quarter of the 2021 financial year has seen AFG record its highest-ever lodgement volume and represents a lift of just over 8% on last quarter. Against the corresponding period in FY2020 it is 16% higher. The surge was largely driven by an uptick in First Home Buyers as they make the most of federal and state government incentives to support the country's construction market. **ASX**
6. **Afterpay (APT +1.73%)** > Afterpay Limited (Afterpay or the Company) confirms that it has received final notification from AUSTRAC following its consideration of the Final Audit Report, undertaken by Independent Auditor Neil Jeans, examining the Company's compliance with the Anti-Money Laundering and Counter-Terrorism Financing Act 2006 (the AML/CTF Act). AUSTRAC has considered the Final Audit Report and Afterpay's response to the findings and has decided it will not be taking any further regulatory action. **ASX**
7. **Boral Limited (BLD -0.41%)** > Boral Limited (ASX: BLD) today announced that Tino La Spina has been appointed Chief Finance & Strategy Officer of Boral Limited, effective 14 October 2020. Tino replaces Rosaline Ng who will work with Tino during a transition period and leave Boral in early 2021. Tino joins Boral after 14 years at Qantas in a number of strategy and finance roles, including as Group CFO for five years and most recently as CEO Qantas International. His responsibilities have encompassed all aspects of finance and strategy including balance sheet management, capital allocation, technology, procurement and portfolio re-alignment. **ASX**
8. **Bank of Queensland (BOQ +5.16%)** > Bank of Queensland Limited (BOQ) today announced that it has entered into an agreement to sell St Andrew's Insurance (St Andrew's) to Farmcove Investment Holdings (Farmcove) for proceeds of \$23 million. The sale is consistent with BOQ's refreshed strategy announced in February 2020, delivering group simplification benefits and is aligned with BOQ's focus on its five core strategic pillars. **ASX**
9. **Challenger Limited (CGF +2.14%)** > Challenger Limited (ASX: CGF) today provided an update for the three months to the end of September, with group assets under management increasing by 4%, driven by record quarterly annuity sales and market leading Funds Management net flows. Challenger's strong capital position and defensive portfolio settings have been maintained and significant progress has been made deploying Challenger Life's cash and liquids balance into higher returning investments, which will enhance both future earnings and return on equity. **ASX**
10. **CSL (CSL +1.36%)** > Biotech giant CSL has narrowed its guidance on net profit and expects growth of three to eight per cent. Chief executive Paul Perreault on Wednesday told the annual general meeting the previous low end of the range of zero per cent had been revised to three per cent. This would give net profit after tax of \$2.170 billion to \$2.265 billion this financial year. There was no change to expected revenue growth of six to 10 per cent. **ASX**
11. **Cleanaway Waste Management (CWY -1.35%)** > Cleanaway Waste Management Limited (ASX: CWY) today provides the following outlook statement in relation to trading conditions for the FY21 financial year. Trading conditions have continued to be mixed throughout the country and the impact of COVID-19 has been felt most in Victoria. On a group level, our first quarter EBITDA for FY21 was in line with FY20 full year run rate, with conditions further improving in September. **ASX**

12. **Galaxy Resources (GXY +3.24%)** > Galaxy Resources Limited (“Galaxy” or the “Company”) (ASX: GXY) will release its September quarterly activities report pre-market open on Wednesday, 28 October 2020. A conference call will be held on the same day to review the quarterly results at 11:00am AEDT (8:00am AWST). At Mt Cattlin, Galaxy shipped 16,753 dry metric tonnes (“dmt”) of lithium concentrate during the quarter and 15,700 dmt at the beginning of October. Quarterly production of 30,067 dmt was achieved at a grade of 5.92% Li₂O and recovery of 57%, in line with full year guidance. **ASX**
13. **Iluka (ILU -0.42%)** > Total zircon, rutile, synthetic rutile (Z/R/SR) production in the September quarter was 135 thousand tonnes, in line with June quarter Z/R/SR production (135 thousand tonnes). Zircon sales continued to improve in the third quarter to 63 thousand tonnes, up 18% from June quarter and up 22% from September quarter 2019. Customers’ plant operating rates remain lower than previous years across various end use industries however there are indications of modest improvement across key markets. Rutile sales were 34 thousand tonnes in September quarter, up 23% from the June quarter. Synthetic rutile sales of 12 thousand tonnes in September quarter were down 68% from June quarter reflecting a contractual dispute and reduced offtake by synthetic rutile customers as previously disclosed. **ASX**
14. **James Hardie (JHX +1.59%)** > James Hardie Industries plc (ASX: JHX; NYSE: JHX), the world’s #1 producer and marketer of high-performance fiber cement and fiber gypsum building solutions raised FY2021 guidance, as the company continues to deliver growth above market and strong returns as it remains steadfast in its journey toward its global transformation. **ASX**
15. **Navigator Global (NGI -2.27%)** > Navigator anticipates some continued redemptions across the Lighthouse’s multi-strategy complex as an on-going consequence of March 2020 performance and overall market conditions, however with improving performance over the past six months we expect to see these redemptions trend downward. Further, Navigator expects AUM growth from continued interest in our equity-based strategies and platform services offering. In the current market environment, the quantum and timing of changes in AUM is difficult to predict. **ASX**
16. **Omni Bridgeway (OBL -0.25%)** > Omni Bridgeway Limited (Omni Bridgeway) refers to its previous announcement dated 13 July 2020. Commencing 26 October 2020, the Court will sit to determine first instance costs, the loss claims of the sample group members and the parties’ proposals concerning the method by which the claims of the balance of group members should be determined. The Court had initially reserved three weeks for this hearing but it is now scheduled for one week. The Court has also referred the proceedings for further mediation to take place as soon as reasonably convenient and in any event by no later than 30 November 2020. As with prior mediations, this means nothing more than the parties will continue to negotiate in good faith but provides no assurance that a settlement will be reached. **ASX**
17. **Ramsay Health Care (RHC +0.15%)** > Ramsay Health Care (Ramsay) confirms that it has varied its agreement with the NHS England (NHS) which makes its facilities and services available to the NHS and its patients during the COVID-19 pandemic. The revised agreement allows for the return of some capacity for private patient activity and routine NHS elective activity. The varied agreement is deemed to have come into effect from 1 July 2020 and will expire on 31 December 2020, unless it is terminated earlier (whether by service of one months’ notice by the NHS or by mutual agreement). **ASX**
18. **Resolute Mining (RSG -1.02%)** > Tabakoroni Underground Mineral Resource Estimate updated to 7.4 million tonnes at 4.4 grams per tonne for 1.04 million ounces of gold. Exploration program continuing at Tabakoroni with further exceptional assay results from recent drilling yet to be included in the updated Mineral Resource Estimate. Recent deep intersections beyond updated resource outline confirm mineralisation is continuous at depth. **ASX**
19. **Sonic Healthcare (SHL +2.31%)** > Sonic Healthcare (ASX: SHL; ADR: SKHHY) continues to perform a crucial frontline role in combating the COVID-19 pandemic, with its laboratories in

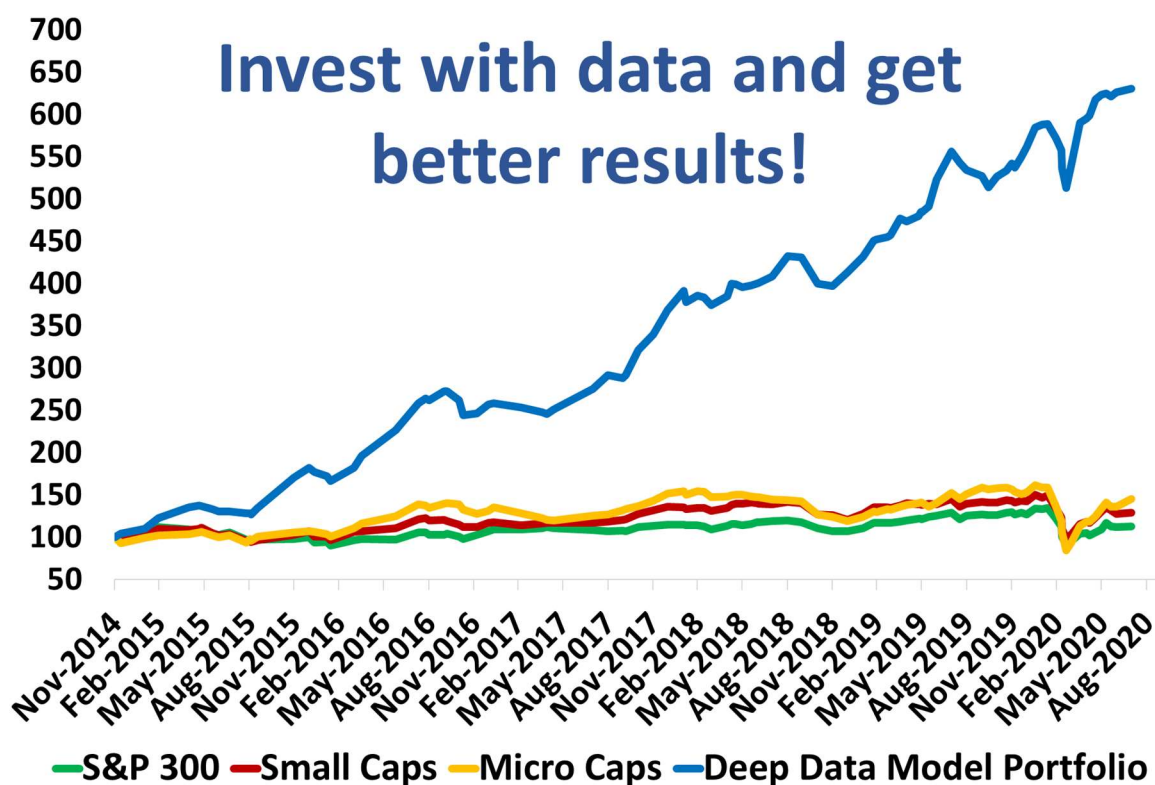
Australia, the USA and Europe testing thousands of people every day for COVID-19, whilst seamlessly also providing essential routine (non-COVID) healthcare services. Sonic's leadership teams around the world continue to work with state and federal governments, healthcare authorities and each other to develop, support and enhance pandemic control initiatives. High quality COVID-19 testing remains the key to enabling identification of positive cases, contact tracing, isolation and quarantining and underpins the epidemiology which informs broader policy-related measures. To date Sonic has conducted more than 9 million COVID-19 PCR tests globally. **ASX**

20. **Viva Energy (VEA -0.60%)** > Viva Energy Group Limited (the Company) today provides a business update for the three months ended 30 September 2020 (3Q2020) together with an update for the Refining business following the announcement of a Fuel Security Package by the Federal Government on 14 September 2020. **ASX**
21. **Westpac Bank (WBC -1.37%)** > Following a comprehensive review of its Asia, Europe and US businesses, Westpac has decided to consolidate its international operations into three branches; Singapore, London and New York. This decision means the Group will exit operations in Beijing, Shanghai, Hong Kong, Mumbai, and Jakarta. **ASX**
22. **Zip Co (Z1P -4.05%)** > Zip Co Limited (ASX: Z1P) (Zip or the Company) is pleased to provide a trading update for the quarter ended 30 September 2020 (Q1 FY21). Record quarterly revenue of \$71.7m (up 88% YoY). Record quarterly transaction volume of \$943.1m (up 96% YoY), now annualising at c.\$3.8bn. Transaction numbers were up 130% YoY. Customers increased to 4.5m, up 114% YoY (628k added in quarter). **ASX**

Deep Data Analytics

Deep Data Analytics is the brainchild of Mathan Somasundaram, a 25-year veteran of the finance and technology sectors. In an increasingly volatile and uncertain economic and political landscape, Mathan saw the need for a dynamic data-driven investment strategy that can be used to optimise the risk-adjusted returns for investors. Seamlessly combining top-down and bottom-up approaches, the vertically integrated, multi-tiered model has been carefully calibrated over the years to rapidly adapt to evolving macro conditions and thereby ensure an effective and dynamic trade-off between risk and return.

Deep Data Analytics has been used as the focal point of strategy in macro marketing documents to Institutional and High Net Worth clients for over a decade. With successive years of consistent and reliable returns despite major disruptive thematic cycles, Deep Data Analytics is widely recognised as one of the leading integrated investment strategies in the market. And now, with the inclusion of a variety of risk/return investment options and insights, breadth of users from institutional to retail investors have access to cutting-edge analytics at their fingertips.



For more information visit... www.deepdataanalytics.com.au

Or email... info@deepdataanalytics.com.au

US market overnight - Reuters

Wall Street lost ground on Tuesday, with halted COVID-19 vaccine trials and an elusive U.S. stimulus agreement weighing on sentiment as third quarter earnings season got underway.

While all three major stock indexes closed in the red, a gain Microsoft Corp shares helped to mitigate the tech-heavy Nasdaq's loss.

Johnson & Johnson announced on Monday it was pausing clinical trials of a COVID-19 vaccine candidate due to an unexplained illness in a study participant. The delay weighed on the company's shares, even after its beat-and-raise earnings report. Its shares lost 2.3%.

Late in the session, rival Eli Lilly & Co said it was also halting its coronavirus antibody trial because of safety concerns, sending its shares down 2.9%.

"We have this recent spike in coronavirus cases coinciding with big drug companies halting vaccine trials," said Robert Pavlik, chief investment strategist at SlateStone Wealth LLC in New York. "That's making the market nervous and in response, you're seeing the lockdown stocks moving higher."

Hopes for the passage of a new coronavirus relief package faded as U.S. House Speaker Nancy Pelosi rejected the \$1.8 trillion coronavirus relief proposal from the White House, saying it "falls significantly short of what this pandemic and deep recession demand."

Senate Majority Leader Mitch McConnell said the Republican-led Senate would vote on a targeted pared-down stimulus package on Monday.

"(Washington is) playing with the market's emotions and individuals' financial futures," SlateStone Wealth's Pavlik added. "As this continues, the market is looking past what they're saying because it truly believes stimulus will come some time after the election."

Although JPMorgan handily beat consensus profit estimates, gaining from a boom in its trading business, its peer Citigroup, while also beating expectations, was slammed by low interest rates and a slowdown in loan demand. Their shares dropped 1.6% and 4.8%, respectively. The broader S&P Banking index lost 2.7%.

Apple Inc unveiled the latest incarnation of its flagship gadget, the iPhone 12 with 5G connectivity. Its shares were down 2.7%.

The Dow Jones Industrial Average fell 157.71 points, or 0.55%, to 28,679.81, the S&P 500 lost 22.29 points, or 0.63%, to 3,511.93 and the Nasdaq Composite dropped 12.36 points, or 0.1%, to 11,863.90.

Third-quarter reporting season has left the starting gate, and analysts now see S&P 500 earnings, in aggregate, falling by 19.6% year-on-year, according to Refinitiv.

Other earnings on tap this week include Bank of America Corp, Goldman Sachs Group Inc, Wells Fargo & Co, UnitedHealth Group and United Airlines Holdings Inc expected on Wednesday, with Morgan Stanley and Honeywell International Inc due on Thursday.

Shares of Delta Air Lines Inc dropped 2.7% after the commercial carrier reported a 76% plunge in quarterly revenue and announced it has delayed a targeted halt to its cash bleed.

Planemaker Boeing Co reported order cancellations for its grounded 737 MAX aircraft and said deliveries were less than half the number as the same month a year ago. Its stock, which was down 3.1%, was the heaviest drag on the Dow.

Declining issues outnumbered advancing ones on the NYSE by a 2.00-to-1 ratio; on Nasdaq, a 1.50-to-1 ratio favored decliners. The S&P 500 posted 39 new 52-week highs and one new low; the Nasdaq Composite recorded 123 new highs and 14 new lows. Volume on U.S. exchanges was 8.50 billion shares, compared with the 9.72 billion average over the last 20 trading days.

US Movers and Shakers - CNBC

MARKET MOVERS

S&P NASDAQ DOW EUR ASIA COVID19

TOP

WAT	Waters Corp	7.085%	<div></div>
EBAY	eBay Inc	3.991%	<div></div>
ETSY	ETSY Inc	3.949%	<div></div>
BLK	BlackRock Inc	3.915%	<div></div>
DPZ	Domino's Pizza ...	3.857%	<div></div>

BOTTOM

RCL	Royal Caribbea...	13.204%	<div></div>
NCLH	Norwegian Crui...	8.241%	<div></div>
CCL	Carnival Corp	7.758%	<div></div>
SLG	SL Green Realty...	6.116%	<div></div>
FOXA	Fox Corp. Class...	5.909%	<div></div>

MARKET MOVERS

S&P NASDAQ DOW EUR ASIA COVID19

TOP

ZM	Zoom Video Co...	5.544%	<div></div>
MELI	Mercadolibre Inc	4.394%	<div></div>
EBAY	eBay Inc	3.991%	<div></div>
PYPL	PayPal Holding...	3.092%	<div></div>
NFLX	Netflix Inc	2.645%	<div></div>

BOTTOM

TCOM	Trip.com Group ...	6.808%	<div></div>
FOXA	Fox Corp. Class...	5.909%	<div></div>
FOX	Fox Corp. Class B	5.699%	<div></div>
AAL	American Airlin...	5.418%	<div></div>
FAST	Fastenal Co	4.807%	<div></div>

MARKET MOVERS

S&P NASDAQ DOW EUR ASIA COVID19

TOP

DIS	Walt Disney Co	3.193%	<div></div>
WMT	Walmart Inc	1.373%	<div></div>
HD	Home Depot Inc	1.203%	<div></div>
MSFT	Microsoft Corp	0.659%	<div></div>
MCD	McDonald's Corp	0.548%	<div></div>

BOTTOM

TRV	Travelers Comp...	3.132%	<div></div>
BA	Boeing Co	3.113%	<div></div>
AAPL	Apple Inc	2.653%	<div></div>
JNJ	Johnson & John...	2.292%	<div></div>
HON	Honeywell Inter...	2.173%	<div></div>

MARKET MOVERS

S&P NASDAQ DOW EUR ASIA COVID19

TOP

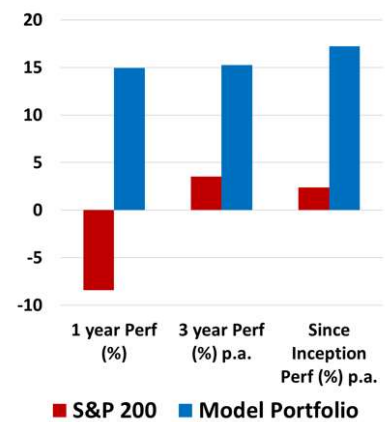
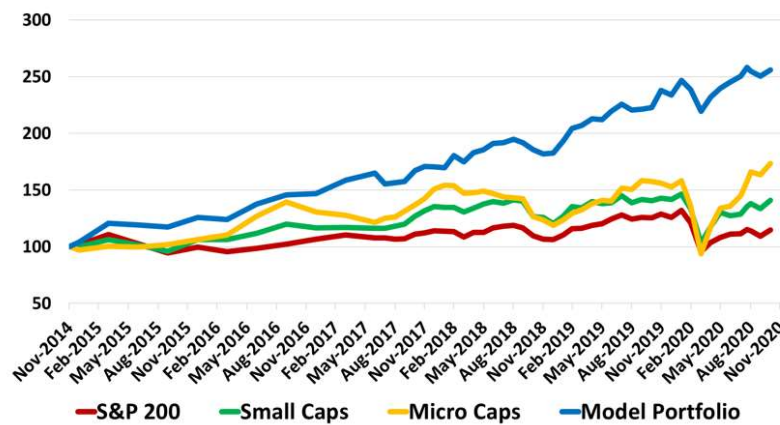
NVAX	Novavax Inc	6.405%	<div></div>
BNTX	BioNTech SE	4.801%	<div></div>
SRNE	Sorrento Thera...	4.733%	<div></div>
MRNA	Moderna Inc	3.957%	<div></div>
INO	Inovio Pharmac...	3.138%	<div></div>

BOTTOM

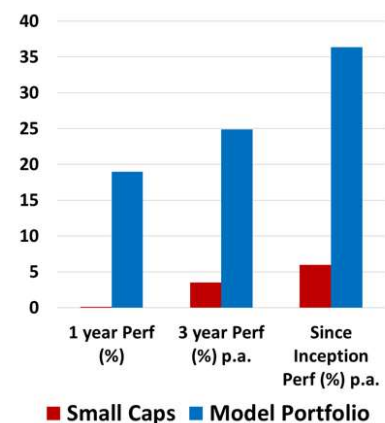
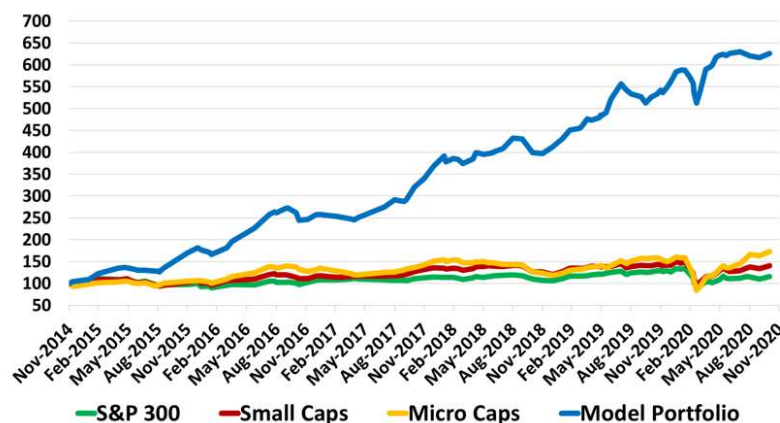
EBS	Emergent BioS...	13.645%	<div></div>
QGEN	Qiagen NV	3.728%	<div></div>
LLY	Eli Lilly and Co	2.855%	<div></div>
TBIO	Translate Bio Inc	2.662%	<div></div>
ABT	Abbott Laborat...	2.413%	<div></div>

Deep Data Analytics

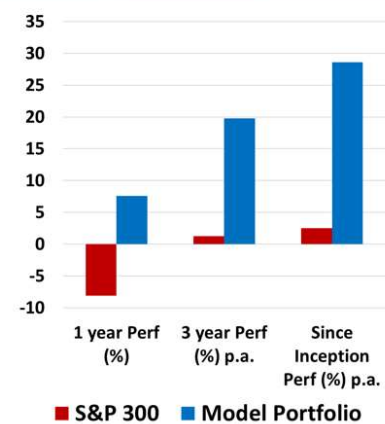
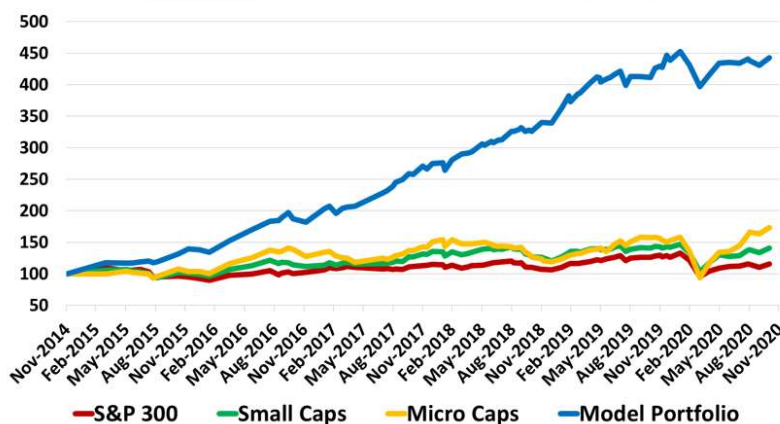
S&P 100 Best 10 with Cash



Small Cap Best 10 with Cash



GARY Best 10 with Cash



For more information visit... www.deepdataanalytics.com.au

Or email... info@deepdataanalytics.com.au

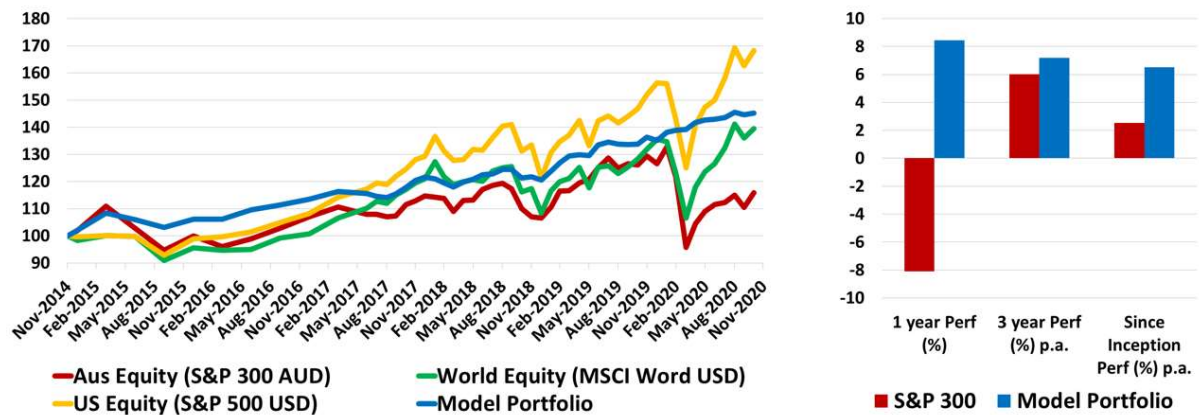
TODAY'S TOP 30 WINNERS AND LOSERS IN S&P 300

Code	Company Name	Market Cap (\$m)	Price (\$)	Daily Price Change (%)	Consensus Target Price (\$)	Consensus Rating	2020 PE	2021 PE	2020 EPS GROWTH	2021 EPS GROWTH	2020 Div Yield	2021 Div Yield	Newsflash
MVP	Medical Developments	349.77	5.88	12.01	8.61	BUY	766.62	420.00	-43.89	82.53	0.62	0.34	Appointment of CEO - Brent MacGregor
EML	EML Payments Ltd	1182.39	3.64	11.31	4.15	BUY	41.96	35.48	86.84	18.27	0.00	0.00	Investor Briefing
NEA	Nearmap Ltd	1240.57	2.69	8.30	3.13	BUY	-33.21	-45.49	-636.36	27.00	0.00	0.00	Presentation
KGK	Kogan.Com Ltd	2338.47	24.45	7.81	22.00	BUY	82.94	50.87	59.93	63.03	0.91	1.43	N/A
JIN	Jumbo Interactive	766.25	12.93	5.95	13.89	BUY	32.71	31.56	-5.72	3.63	2.53	2.58	N/A
BOQ	Bank of Queensland	2862.31	6.73	5.24	6.00	HOLD	14.27	14.45	-40.13	-1.22	1.37	4.03	FY2020 Preliminary Final Report Appendix 4E
TPW	Temple & Webster Ltd	1561.07	13.65	5.02	11.40	BUY	195.00	82.63	577.64	136.00	0.00	0.00	N/A
AEF	Australian Ethical	516.98	4.73	4.78	-	-	N/A	N/A	N/A	N/A	N/A	N/A	AEF - Quarterly FUM Announcement
PNV	Polynovo Limited	1540.34	2.48	4.72	2.50	BUY	-594.72	476.92	10.71	224.70	0.00	0.00	N/A
SKY	Senex Energy Limited	481.80	0.34	4.55	0.43	BUY	55.83	24.14	7.91	131.33	0.00	0.00	N/A
PAR	Paradigm Bio.	677.57	3.08	4.33	2.54	HOLD	-40.79	-21.10	-98.68	-93.38	0.00	0.00	N/A
BAP	Bapcor Limited	2664.39	8.45	4.33	8.49	BUY	29.81	26.63	-15.93	11.97	1.36	2.06	N/A
MP1	Megaport Limited	2444.95	16.64	4.17	17.15	BUY	-69.33	-87.03	2.17	20.33	0.00	0.00	N/A
PME	Pro Medicus Limited	2891.87	29.01	4.14	29.00	HOLD	125.58	102.46	34.41	22.57	0.41	0.49	N/A
LOV	Lovisa Holdings Ltd	909.11	8.52	4.14	7.38	HOLD	20.84	39.24	18.57	-46.90	0.50	1.32	N/A
PLS	Pilbara Min Ltd	835.17	0.37	4.00	0.30	HOLD	-11.56	-27.84	-93.94	58.47	0.00	0.00	Corporate Presentation
SPL	Starpharma Holdings	600.10	1.54	3.69	2.03	STRONG BUY	-42.78	-62.86	-9.09	31.94	0.00	0.00	N/A
HUB	HUB24 Ltd	1306.11	21.88	3.18	18.70	BUY	101.82	74.74	38.51	36.24	0.36	0.55	N/A
GXY	Galaxy Resources	530.28	1.28	3.09	1.12	HOLD	-26.72	-31.24	42.30	14.47	0.00	0.00	Quarterly Conference Call & Preliminary Results
ALU	Altium Limited	4981.94	39.40	3.00	36.30	HOLD	85.33	68.36	-23.62	24.83	1.11	1.32	N/A
BRG	Breville Group Ltd	3819.48	28.38	2.95	27.46	HOLD	47.81	43.85	13.97	9.03	1.27	1.56	N/A
PDL	Pendal Group Ltd	1962.64	6.26	2.80	6.89	BUY	13.18	14.00	-7.59	-5.89	6.09	6.08	Funds under management - Quarter ended 30 September 2020
SM1	Synlait Milk Ltd	916.26	5.24	2.74	5.98	HOLD	12.63	12.98	-13.30	-2.65	0.00	0.00	N/A
DMP	Domino Pizza Enterpr	7112.22	86.43	2.71	77.30	HOLD	50.32	42.97	3.16	17.09	1.32	1.64	Change of Directors Interest Notice - Correction
RFF	Rural Funds Group	795.14	2.40	2.55	2.43	BUY	15.66	16.24	10.98	-3.59	4.48	4.70	N/A
JBH	JB Hi-Fi Limited	5768.29	52.58	2.55	47.00	HOLD	18.59	18.85	34.77	-1.37	3.32	3.56	N/A
TNE	Technology One	2704.43	8.59	2.48	8.48	HOLD	42.92	38.50	14.69	11.49	1.49	1.71	N/A
IEL	Idp Education Ltd	5391.37	20.15	2.48	21.00	BUY	114.56	118.30	-34.68	-3.16	0.98	0.55	N/A
GWA	GWA Group Ltd	746.97	3.01	2.47	2.60	HOLD	16.41	19.58	-8.14	-16.16	4.46	3.60	Change in Registered Office Address - Correction
SHL	Sonic Healthcare	16419.36	35.50	2.33	35.10	BUY	32.69	24.63	-6.40	32.71	2.13	2.88	Trading Update September 2020 Quarter Results

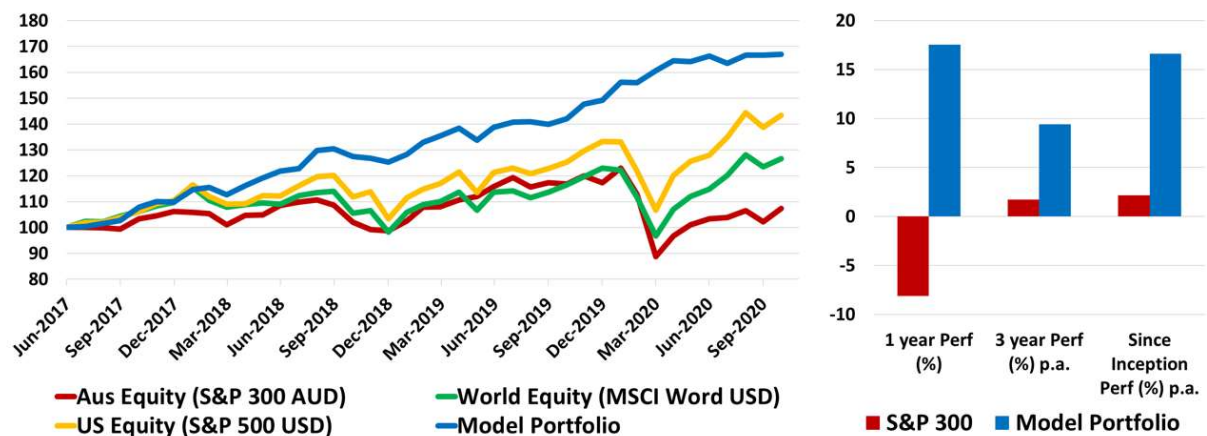
Code	Company Name	Market Cap (\$m)	Price (\$)	Daily Price Change (%)	Consensus Target Price (\$)	Consensus Rating	2020 PE	2021 PE	2020 EPS GROWTH	2021 EPS GROWTH	2020 Div Yield	2021 Div Yield	Newsflash
FLT	Flight Centre Travel	2837.18	13.28	-7.79	14.30	HOLD	-9.14	-15.01	-165.47	39.06	0.00	0.00	N/A
OPT	Opthea Limited	818.24	2.93	-7.24	4.90	BUY	-19.98	67.09	-56.03	129.77	0.00	0.00	N/A
CIM	Cimic Group Ltd	6897.10	20.78	-6.65	27.95	BUY	10.10	9.06	-16.47	11.47	3.44	6.92	THIESS SECURES A\$110 MILLION CAVAL RIDGE EXTENSION
CVN	Carnarvon Petroleum	359.81	0.23	-6.52	0.37	BUY	-76.67	-54.12	52.61	-41.67	0.00	0.00	Appendix 3Y - Bakker
AZJ	Aurizon Holdings Ltd	8079.79	4.07	-4.50	5.40	BUY	15.10	15.60	20.99	-3.25	6.63	6.44	On-Market Buy-back Appendix 3E
MAH	Macmahon Holdings	527.97	0.24	-4.08	0.37	STRONG BUY	8.57	8.00	-91.04	7.14	2.08	3.05	N/A
WHC	Whitehaven Coal	1017.15	0.95	-4.06	1.90	BUY	34.51	-21.63	-94.87	-259.57	1.54	0.11	N/A
WEB	Webjet Limited	1423.81	4.00	-4.05	3.70	HOLD	85.32	-20.58	-89.74	-514.63	1.10	0.00	N/A
ZIP	Zip Co Ltd.	4124.31	7.58	-4.01	8.35	HOLD	-75.33	-70.59	-262.63	-6.71	0.00	0.00	Quarterly Update
VUK	Virgin Money UK PLC	1472.92	1.60	-3.90	1.80	HOLD	14.47	8.62	-76.82	67.90	0.00	0.92	N/A
VXC	Vicinity Centres	6486.99	1.38	-3.86	1.38	HOLD	9.42	15.97	-18.15	-40.99	5.87	5.96	N/A
VRL	Village Roadshow Ltd	419.90	2.11	-3.72	2.20	HOLD	-11.72	-17.70	-254.28	33.78	0.47	0.00	N/A
DCN	Dadian Gold Ltd	228.17	0.38	-3.66	0.41	HOLD	-3.96	6.39	-526.22	161.98	0.00	0.00	N/A
SUN	Suncorp Group Ltd	11401.68	8.82	-3.59	10.26	BUY	16.79	13.50	-37.70	24.44	4.17	5.15	N/A
IGO	IGO Limited	2670.40	4.35	-3.54	5.30	HOLD	16.25	19.63	99.92	-17.23	2.43	2.57	IGO 2020 Diggers and Dealers Mining Forum Presentation
SCG	Scentre Grp	12041.68	2.26	-3.45	2.35	HOLD	14.81	11.70	-39.02	26.65	3.84	6.88	N/A
URW	UnibailRodawestfield	620.44	2.93	-3.20	3.88	HOLD	4.38	4.21	-34.40	4.01	8.92	12.99	N/A
S32	South32 Limited	10613.33	2.09	-3.20	2.70	BUY	38.90	18.30	-81.90	112.59	1.92	2.33	N/A
OML	Ooh!Media Limited	855.13	1.37	-3.11	1.25	BUY	-51.89	34.60	-116.49	250.00	0.00	0.44	N/A
SKL	Sthn Cross Media	435.95	0.16	-3.03	0.18	HOLD	6.90	12.31	-67.42	-43.97	7.50	0.00	N/A
QBE	QBE Insurance Group	13370.15	9.11	-2.97	12.03	BUY	-21.43	12.98	-149.70	265.11	1.82	4.68	N/A
IPL	Inditec Pivot	4117.52	2.05	-2.83	2.40	BUY	17.97	14.96	31.53	20.09	1.47	3.17	N/A
PPT	Perpetual Limited	1706.57	29.59	-2.75	34.80	BUY	15.39	14.94	-25.03	3.01	5.81	4.92	N/A
BKW	Brickworks Limited	3003.21	19.34	-2.70	20.20	BUY	18.05	29.58	-35.27	-38.99	3.00	3.09	A CUM-DIV MARKET HAS BEEN ESTABLISHED IN BKW
MND	Monadelphous Group	985.63	10.17	-2.69	11.00	BUY	26.26	17.59	-41.75	49.33	2.81	4.12	N/A
IAG	Insurance Australia	11069.91	4.78	-2.51	5.80	BUY	33.62	15.53	-64.46	116.52	2.18	4.56	N/A
INR	ioneer Ltd	344.84	0.19	-2.44	0.50	-	-0.68	-0.26	N/A	-162.01	0.00	0.00	N/A
WOR	Worley Limited	5476.53	10.40	-2.38	11.70	BUY	13.90	15.20	25.61	-8.54	3.64	4.25	N/A
CCX	City Chic Collective	672.27	2.94	-2.38	3.70	BUY	36.87	32.40	-2.15	13.79	0.00	0.63	N/A
NGI	Navigator Global Ltd	251.33	1.51	-2.26	2.27	STRONG BUY	6.26	10.43	-14.29	-39.98	14.32	9.44	September 2020 AUM Updated and earnings guidance

Deep Data Analytics

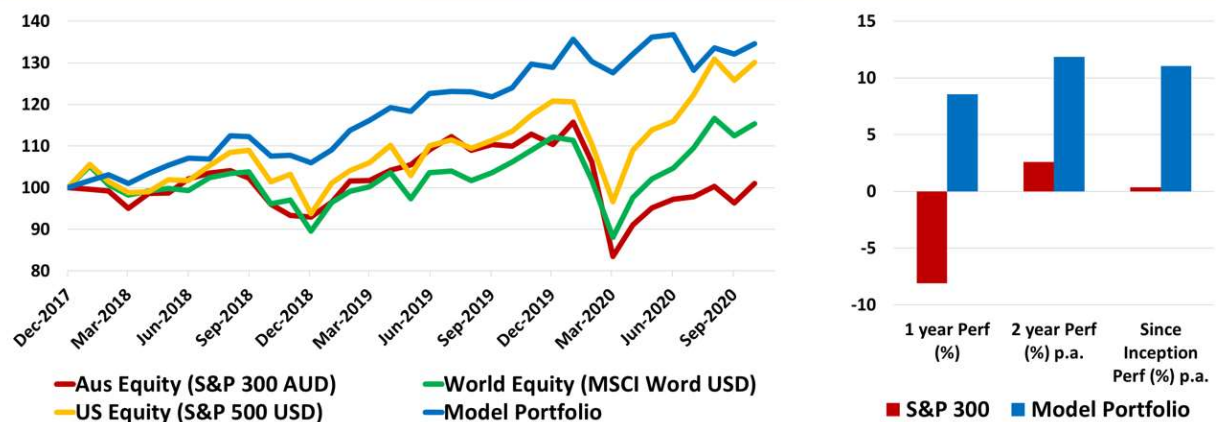
Multi Asset ETF Model



Global Tech/Health ETF Model



ESG ETF Model



For more information visit... www.deepdataanalytics.com.au

Or email... info@deepdataanalytics.com.au

CHECKING S&P 300 BY THE SECTOR

➤ Energy stocks:

Code	Company Name	Market Cap (\$m)	Price (\$)	Daily Price Change (%)	Consensus Target Price (\$)	Consensus Rating	2020 PE	2021 PE	2020 EPS GROWTH	2021 EPS GROWTH	2020 Div Yield	2021 Div Yield	Newsflash
ALD	Ampol Limited	6142.79	24.92	1.30	27.51	BUY	31.01	16.59	-38.73	86.90	1.76	3.27	N/A
BPT	Beach Energy Limited	3193.87	1.40	-0.36	1.87	BUY	7.17	9.11	-21.78	-21.25	1.39	1.41	N/A
COE	Cooper Energy Ltd	577.46	0.36	0.00	0.50	BUY	-97.04	64.75	-192.75	249.87	0.00	0.00	N/A
CVN	Camarvon Petroleum	359.81	0.23	-6.52	0.37	BUY	-76.67	-54.12	52.61	-41.67	0.00	0.00	Appendix 3Y - Bakker
FAR	FAR Ltd	109.77	0.01	0.00	0.03	BUY	-16.42	-11.00	33.00	-49.25	0.00	0.00	N/A
KAR	Karoon Energy Ltd	487.06	0.85	1.14	1.43	BUY	-5.88	-77.27	-32.62	92.39	0.00	0.00	N/A
NHC	New Hope Corporation	1082.06	1.22	1.15	1.40	HOLD	7.56	49.80	-63.03	-84.81	6.78	1.28	N/A
ORG	Origin Energy	7696.49	4.36	-0.46	6.20	BUY	7.45	18.31	0.31	-59.30	6.44	4.93	N/A
OSH	Oil Search Ltd	5921.87	2.82	-1.75	3.69	BUY	101.44	24.09	-91.28	321.11	0.18	1.16	N/A
SOL	Soul Pattinson (W.H)	6150.07	25.67	-0.90	24.16	BUY	29.73	34.93	-42.83	-14.86	2.19	2.26	N/A
STO	Santos Ltd	10540.31	5.04	-0.79	6.49	BUY	21.62	15.57	-56.19	38.85	1.33	1.63	N/A
SKY	Senex Energy Limited	481.80	0.34	4.55	0.43	BUY	55.83	24.14	7.91	131.33	0.00	0.00	N/A
VEA	Viva Energy Group	2729.81	1.67	-0.60	2.44	BUY	77.49	18.59	-75.36	316.80	3.48	3.69	Viva Energy Market Update
WHC	Whitehaven Coal	1017.15	0.95	-4.06	1.90	BUY	34.51	-21.63	-94.87	-259.57	1.54	0.11	N/A
WOR	Worley Limited	5476.53	10.40	-2.38	11.70	BUY	13.90	15.20	25.61	-8.54	3.64	4.25	N/A
WPL	Woodside Petroleum	17656.84	18.27	-1.25	23.55	BUY	25.63	19.29	-59.03	32.82	3.13	4.15	N/A

➤ Material (Ex Mining) stocks:

Code	Company Name	Market Cap (\$m)	Price (\$)	Daily Price Change (%)	Consensus Target Price (\$)	Consensus Rating	2020 PE	2021 PE	2020 EPS GROWTH	2021 EPS GROWTH	2020 Div Yield	2021 Div Yield	Newsflash
ABC	Adbri Limited	2093.78	3.18	0.62	2.42	HOLD	20.69	21.65	-17.86	-4.45	2.98	2.91	Citi 2020 Investment Conference
AMC	Amcor PLC	14072.78	15.91	0.13	16.20	BUY	17.32	16.39	2.04	5.65	4.51	4.23	N/A
BKW	Brickworks Limited	3003.21	19.34	-2.70	20.20	BUY	18.05	29.58	-35.27	-38.99	3.00	3.09	A CUM-DIV MARKET HAS BEEN ESTABLISHED IN BKW
BLD	Boral Limited	6091.50	4.89	-0.40	4.30	HOLD	28.92	31.07	-57.97	-6.92	2.04	0.84	Boral appoints new Chief Finance & Strategy Officer
CSR	CSR Limited	2261.88	4.68	0.43	3.98	HOLD	19.91	18.07	-35.95	10.21	4.25	2.77	N/A
FBU	Fletcher Building	3354.72	3.97	-1.47	3.91	BUY	64.96	19.30	-85.07	236.50	0.69	2.67	N/A
IPL	Inditec Pivot	4117.52	2.05	-2.83	2.40	BUY	17.97	14.96	31.53	20.09	1.47	3.17	N/A
JHX	James Hardie Indust	15648.78	35.78	1.59	34.95	BUY	29.67	29.68	21.15	-0.02	0.77	0.00	JHX Raises Guidance
NUF	Nufarm Limited	1499.79	3.88	-1.77	4.80	BUY	-43.89	35.98	-137.02	221.98	0.17	0.74	N/A
ORA	Orora Limited	2432.71	2.49	-0.40	2.50	HOLD	14.95	16.39	-26.79	-8.76	24.53	4.49	N/A
ORI	Orica Limited	6538.71	16.43	-0.43	18.50	BUY	20.20	17.50	-14.85	15.45	2.33	3.13	N/A
PGH	Pact Group Hldgs Ltd	808.38	2.36	1.28	2.78	HOLD	12.66	11.50	-16.68	10.07	0.00	3.07	N/A

➤ Gold stocks:

Code	Company Name	Market Cap (\$m)	Price (\$)	Daily Price Change (%)	Consensus Target Price (\$)	Consensus Rating	2020 PE	2021 PE	2020 EPS GROWTH	2021 EPS GROWTH	2020 Div Yield	2021 Div Yield	Newsflash
ALK	Alkane Resources Ltd	857.36	1.43	-0.35	1.05	BUY	57.22	35.75	-37.46	60.06	0.00	0.00	N/A
BGL	Bellvue Gold Ltd	1033.07	1.23	-0.81	1.48	STRONG BUY	-84.83	-153.75	-31.82	44.83	0.00	0.00	Diggers and Dealers Presentation
DCN	Dacian Gold Ltd	228.17	0.38	-3.66	0.41	HOLD	-3.96	6.39	-526.22	161.98	0.00	0.00	N/A
DEG	De Grey Mining	1765.04	1.34	-0.72	1.06	STRONG BUY	N/A	N/A	N/A	N/A	0.00	0.00	Investor Presentation Diggers and Dealers Forum
EVN	Evolution Mining Ltd	10456.71	6.12	0.16	5.50	HOLD	27.75	20.61	67.27	34.63	2.01	2.48	N/A
GOR	Gold Road Res Ltd	1363.88	1.53	1.29	2.00	BUY	16.35	12.38	11139.76	32.00	0.56	2.14	N/A
NCM	Newcrest Mining	25966.50	31.48	-0.66	36.45	HOLD	25.93	15.66	8.49	65.54	0.84	1.13	Newcrest commences trading on TSX
NST	Northern Star	11877.62	16.19	1.19	16.23	HOLD	32.32	17.27	72.00	87.12	0.92	1.41	N/A
PRU	Perseus Mining Ltd	1734.30	1.39	-1.77	1.65	BUY	26.05	15.25	1376.94	70.83	0.00	0.00	N/A
RED	Red 5 Limited	601.03	0.29	0.00	0.50	BUY	41.43	-72.50	-41.67	-157.14	0.00	0.00	Diggers & Dealers Mining Forum presentation
RMS	Ramelius Resources	1779.41	2.22	0.00	2.40	BUY	17.43	9.36	206.99	86.22	0.45	1.58	N/A
RRL	Regis Resources	2607.01	5.10	0.20	5.75	HOLD	12.15	8.99	22.23	35.23	3.40	3.61	Diggers and Dealers 2020 Presentation
RSG	Resolute Mining	1092.85	0.98	-1.01	1.59	BUY	11.21	5.76	35.70	94.49	1.81	1.99	Tabakoron Underground Update
SAR	Saracen Mineral	6612.59	6.11	1.17	6.10	HOLD	27.72	18.28	82.89	51.65	0.21	1.04	N/A
SBM	St Barbara Limited	2172.50	3.05	0.32	4.00	BUY	13.72	8.54	-19.77	60.74	2.80	2.68	N/A
SLR	Silver Lake Resource	2158.96	2.41	0.00	2.64	BUY	15.80	12.12	207.03	30.36	0.00	0.00	N/A
SSR	SSR Mining Inc.	418.21	26.61	0.81	30.00	BUY	17.54	7.97	35.21	120.11	0.00	8.09	N/A
WAF	West African Res Ltd	1060.09	1.10	1.65	1.30	BUY	9.82	3.03	1593.33	223.81	0.00	0.00	N/A
WGX	Westgold Resources.	1138.82	2.67	-1.85	3.20	STRONG BUY	27.15	9.55	495.94	184.42	0.00	0.25	Investor Presentation - Diggers and Dealers 2020

➤ Mining (Ex Gold) stocks:

Code	Company Name	Market Cap (\$m)	Price (\$)	Daily Price Change (%)	Consensus Target Price (\$)	Consensus Rating	2020 PE	2021 PE	2020 EPS GROWTH	2021 EPS GROWTH	2020 Div Yield	2021 Div Yield	Newsflash
AMI	Aurelia Metals Ltd	458.84	0.50	0.00	0.75	STRONG BUY	10.27	7.58	-9.87	35.61	1.00	2.87	N/A
AWC	Alumina Limited	4134.90	1.41	-1.75	1.95	BUY	18.58	16.89	-55.52	10.01	4.98	5.31	N/A
BHP	BHP Group Limited	107346.82	36.03	-0.77	40.00	BUY	14.31	12.49	-10.20	14.56	4.72	5.60	Appointment of Senior Independent Director
BSL	BlueScope Steel Ltd	7289.73	14.52	0.00	14.00	BUY	20.76	26.72	-60.76	-22.28	0.84	0.91	BlueScopes 2020 Notice of Annual General Meeting
CIA	Champion Iron Ltd	1471.47	3.13	0.00	3.90	BUY	9.69	4.98	-16.87	94.63	0.00	0.00	Notice of Q2 FY 2021 Financial Results Conference Call
CMM	Capricorn Metals	643.01	1.87	0.27	1.70	HOLD	-86.74	60.16	N/A	244.19	0.00	0.00	N/A
FMG	Fortescue Metals Grp	51911.35	16.39	-1.36	15.80	HOLD	7.63	7.14	54.22	6.97	10.23	10.20	N/A
GXY	Galaxy Resources	530.28	1.28	3.09	1.12	HOLD	-26.72	-31.24	42.30	14.47	0.00	0.00	Quarterly Conference Call & Preliminary Results
IGO	IGO Limited	2670.40	4.35	-3.54	5.30	HOLD	16.25	19.63	99.92	-17.23	2.43	2.57	IGO 2020 Diggers and Dealers Mining Forum Presentation
ILU	Iluka Resources	4024.77	9.57	-0.42	10.00	BUY	20.85	13.95	-31.58	49.44	0.32	3.25	Quarterly Review to 30 September 2020
IMD	Imdex Limited	572.87	1.44	2.08	1.58	BUY	23.59	31.66	-16.29	-25.48	2.16	1.24	N/A
INR	Ioneer Ltd	344.84	0.19	-2.44	0.50	-	-0.68	-0.26	N/A	-162.01	0.00	0.00	N/A
JMS	Jupiter Mines.	548.52	0.28	0.00	0.40	BUY	5.50	17.19	N/A	-68.00	22.73	7.76	N/A
LYC	Lynas Corporation	2432.91	2.70	0.00	3.00	STRONG BUY	-414.75	39.13	-113.75	1159.91	0.00	0.00	Becoming a substantial holder
MAH	Macmahon Holdings	527.97	0.24	-4.08	0.37	STRONG BUY	8.57	8.00	-91.04	7.14	2.08	3.05	N/A
MGX	Mount Gibson Iron	853.86	0.72	-0.69	0.93	STRONG BUY	7.81	7.49	15.82	4.37	4.20	4.90	N/A
MIN	Mineral Resources.	4750.77	25.06	0.28	26.00	HOLD	13.27	8.20	95.65	61.81	3.16	5.17	N/A
MLD	MACA Limited	222.45	0.82	-1.81	1.31	STRONG BUY	7.39	6.26	48.00	18.02	5.79	6.10	N/A
NIC	Nickel Mines Limited	1659.92	0.79	1.92	1.05	BUY	11.92	6.79	N/A	75.52	1.42	3.89	N/A
ORE	Orocobre Limited	990.85	2.69	-2.08	2.85	HOLD	-22.89	-30.10	-150.33	23.93	0.00	0.00	Citi Australia Conference Presentation
OZL	OZ Minerals	4862.65	14.71	0.48	14.02	BUY	26.71	14.76	4.72	80.94	1.44	1.68	N/A
PLS	Pilbara Min Ltd	835.17	0.37	4.00	0.30	HOLD	-11.56	-27.84	-93.94	58.47	0.00	0.00	Corporate Presentation
PRN	Perenti Global Ltd	817.67	1.13	-1.72	1.68	BUY	7.33	7.09	-2.71	3.33	5.80	6.09	N/A
RIO	Rio Tinto Limited	35874.33	95.33	-1.26	104.50	BUY	10.24	10.47	-2.17	-2.19	6.31	6.22	N/A
S32	South32 Limited	10613.33	2.09	-3.20	2.70	BUY	38.90	18.30	-81.90	112.59	1.92	2.33	N/A
SFR	Sandfire Resources	778.96	4.36	-0.23	5.50	BUY	8.91	7.37	-27.98	20.96	3.25	3.59	Diggers & Dealers Presentation
SGM	Sims Limited	1681.40	8.43	-1.32	9.44	HOLD	-29.28	40.69	-136.83	171.96	1.10	0.91	N/A
WSA	Western Areas Ltd	616.15	2.25	0.00	2.65	BUY	13.85	17.56	188.76	-21.11	1.07	0.94	Corporate Presentation - Diggers & Dealers 2020

➤ Industrial stocks:

Code	Company Name	Market Cap (\$m)	Price (\$)	Daily Price Change (%)	Consensus Target Price (\$)	Consensus Rating	2020 PE	2021 PE	2020 EPS GROWTH	2021 EPS GROWTH	2020 Div Yield	2021 Div Yield	Newsflash
AIA	Auckland International	10131.15	6.88	-0.29	6.73	HOLD	66.30	-1893.23	-52.52	-103.50	0.38	0.00	August 2020 Monthly Traffic update & Sep 2020 Preview
ALQ	ALS Ltd	4679.53	9.73	-0.21	9.29	BUY	25.01	27.97	7.22	-10.58	1.71	1.68	N/A
ALX	Atlas Arteria	6099.36	6.40	-1.73	6.99	BUY	51.60	17.37	-59.82	197.07	2.33	5.57	N/A
AMA	AMA Group Limited	488.05	0.68	0.00	0.80	BUY	96.43	32.45	-87.15	197.14	0.12	0.00	N/A
ASB	Austal Limited	1258.45	3.39	-1.71	4.38	BUY	14.20	13.94	49.48	1.84	2.06	2.64	N/A
AZI	Aurizon Holdings Ltd	8079.79	4.07	-4.50	5.40	BUY	15.10	15.60	20.99	-3.25	6.63	6.44	On-Market Buy-back Appendix 3E
BIN	Bingo Industries Ltd	1818.07	2.73	-0.36	2.56	BUY	34.61	42.73	-6.08	-19.01	1.14	0.94	N/A
BXB	Brambles Limited	15989.30	10.86	0.00	12.25	BUY	23.14	22.13	-17.65	4.59	3.84	3.01	Daily share buy-back notice - Appendix 3E
CIM	Cimic Group Ltd	6897.10	20.78	-6.65	27.95	BUY	10.10	9.06	-16.47	11.47	3.44	6.92	THIESS SECURES A\$110 MILLION CAVAL RIDGE EXTENSION
CWY	Cleanaway Waste Ltd	4609.59	2.20	-1.34	2.45	BUY	31.78	28.31	-1.68	12.25	1.74	1.98	Company Trading Update
DOW	Downer EDI Limited	3450.36	4.87	-1.83	5.29	BUY	17.48	13.26	-43.40	31.82	3.02	3.12	N/A
EHL	Emeco Holdings	467.89	0.83	-1.16	1.19	BUY	4.06	6.27	10.52	-35.17	0.00	0.00	N/A
EOS	Electro Optic Sys.	908.53	6.01	1.81	7.14	BUY	34.34	26.83	-9.79	28.00	0.00	0.00	Appendix 2A
GWA	GWA Group Ltd	746.97	3.01	2.47	2.60	HOLD	16.41	19.58	-8.14	-16.16	4.46	3.60	Change in Registered Office Address - Correction
IPH	IPH Limited	1556.64	7.30	-0.42	8.78	BUY	20.06	19.94	20.76	0.64	3.92	4.01	Annual Report for the year ended 30 June 2020
MMS	McMillan Shakespeare	723.51	9.32	1.28	9.90	HOLD	10.63	10.14	-16.28	4.84	6.20	6.06	N/A
MND	Monadelphous Group	985.63	10.17	-2.69	11.00	BUY	26.26	17.59	-41.75	49.33	2.81	4.12	N/A
NWH	NRW Holdings Limited	921.64	2.16	1.39	2.76	STRONG BUY	10.38	9.22	64.99	12.49	2.13	3.22	N/A
PET	Phoslock Env Tec Ltd	153.13	0.25	0.00	-	-	N/A	N/A	N/A	N/A	N/A	N/A	N/A
QAN	Qantas Airways	8109.99	4.21	-2.09	4.63	BUY	-82.15	-10.57	-108.78	-677.07	1.08	0.50	N/A
QUB	Qube Holdings Ltd	5202.60	2.76	-0.36	3.08	BUY	42.82	46.15	-16.03	-7.21	1.80	1.69	N/A
RWC	Reliance Worldwide	3350.00	4.28	0.47	4.33	HOLD	26.93	21.62	-17.70	24.55	1.83	2.19	N/A
SIQ	Smartgrp Corporation	790.28	5.99	-0.34	6.93	HOLD	12.64	11.60	-23.72	8.91	5.58	6.00	N/A
SSM	Service Stream	884.29	2.22	1.85	2.55	STRONG BUY	15.58	15.58	1.06	0.00	4.11	4.25	N/A
SVW	Seven Group Holdings	7197.78	21.47	-0.09	21.05	BUY	16.77	16.63	-6.33	-0.83	1.89	2.11	Change in substantial holding for BCI
SYD	SYD Airport	16408.10	6.08	-1.15	6.14	HOLD	-66.65	472.78	-154.87	114.10	0.05	2.09	N/A
TCL	Transurban Group	38115.60	13.93	-0.50	14.11	HOLD	394.28	#####	-75.50	-101.81	3.36	2.85	N/A

➤ Consumer stocks:

Code	Company Name	Market Cap (\$m)	Price (\$)	Daily Price Change (%)	Consensus Target Price (\$)	Consensus Rating	2020 PE	2021 PE	2020 EPS GROWTH	2021 EPS GROWTH	2020 Div Yield	2021 Div Yield	Newsflash
ALG	Ardentleisuregrpltd	280.63	0.62	-0.85	0.70	BUY	-5.89	-4.54	-406.01	-29.69	0.00	0.00	Notice of Annual General Meeting/Proxy Form
ALL	Aristocrat Leisure	19699.09	31.20	0.36	32.30	BUY	42.39	26.69	-44.50	58.80	0.13	1.41	N/A
APE	Eagers Automotive	2859.67	11.20	0.09	10.00	BUY	38.10	25.99	-26.13	46.56	0.53	2.48	N/A
ARB	ARB Corporation.	2592.10	32.37	1.14	30.25	HOLD	53.54	34.63	-16.12	54.60	0.97	1.52	N/A
AX1	Accent Group Ltd	923.88	1.73	0.29	1.85	BUY	16.20	15.58	8.31	3.99	3.49	5.23	N/A
BAP	Bapcor Limited	2664.39	8.45	4.33	8.49	BUY	29.81	26.63	-15.93	11.97	1.36	2.06	N/A
BBN	Baby Bunting Grp Ltd	621.24	4.99	1.03	5.39	BUY	33.72	25.92	30.40	30.07	1.94	2.66	Change of Directors Interest Notice - Gary Levin
BRG	Breville Group Ltd	3819.48	28.38	2.95	27.46	HOLD	47.81	43.85	13.97	9.03	1.27	1.56	N/A
CCX	City Chic Collective	672.27	2.94	-2.38	3.70	BUY	36.87	32.40	-2.15	13.79	0.00	0.63	N/A
CKF	Collins Foods Ltd	1232.26	10.97	1.42	10.65	BUY	32.55	28.00	-14.03	16.27	1.18	1.89	N/A
CTD	Corp Travel Limited	2216.19	17.74	0.69	16.40	BUY	62.79	323.13	-69.19	-80.57	1.02	0.08	N/A
CWN	Crown Resorts Ltd	5958.99	8.95	0.34	10.58	BUY	39.13	261.70	-57.89	-85.05	3.96	4.23	N/A
DMP	Domino Pizza Enterpr	7112.22	86.43	2.71	77.30	HOLD	50.32	42.97	3.16	17.09	1.32	1.64	Change of Directors Interest Notice - Correction
FLT	Flight Centre Travel	2837.18	13.28	-7.79	14.30	HOLD	-9.14	-15.01	-165.47	39.06	0.00	0.00	N/A
GEM	G8 Education Limited	916.18	1.07	0.46	1.38	BUY	12.70	19.61	-41.52	-35.22	0.00	3.36	N/A
GUD	G.U.D. Holdings	1066.57	12.50	-0.08	11.70	HOLD	21.37	19.89	-16.56	7.46	3.73	3.50	N/A
HVN	Harvey Norman	5818.85	4.76	0.86	5.00	BUY	14.00	12.10	9.97	15.71	4.38	6.29	N/A
IEL	Idp Education Ltd	5391.37	20.15	2.48	21.00	BUY	114.56	118.30	-34.68	-3.16	0.98	0.55	N/A
IVC	InvoCare Limited	1455.01	10.19	0.00	10.75	HOLD	38.04	26.71	-45.06	42.39	2.65	3.11	N/A
JBH	JB Hi-Fi Limited	5768.29	52.58	2.55	47.00	HOLD	18.59	18.85	34.77	-1.37	3.32	3.56	N/A
JIN	Jumbo Interactive	766.25	12.93	5.95	13.89	BUY	32.71	31.56	-5.72	3.63	2.53	2.58	N/A
KGN	Kogan.Com Ltd	2338.47	24.45	7.81	22.00	BUY	82.94	50.87	59.93	63.03	0.91	1.43	N/A
KMD	Kathmandu Hold Ltd	843.71	1.20	0.42	1.25	BUY	19.09	16.25	-49.59	17.44	1.04	3.51	Lapse of Performance Rights
LOV	Lovisa Holdings Ltd	909.11	8.52	4.14	7.38	HOLD	20.84	39.24	18.57	-46.90	0.50	1.32	N/A
NCK	Nick Scall Limited	712.80	9.04	2.27	9.20	BUY	18.63	14.27	-5.88	30.49	4.96	6.01	N/A
PBH	Pointsbet Holdings	1956.41	12.17	-0.27	12.65	HOLD	-45.28	-36.67	N/A	-23.50	0.00	0.00	N/A
PMV	Premier Investments	3642.73	23.54	1.48	20.50	HOLD	27.69	25.10	5.48	10.34	2.22	3.05	N/A
RDC	Redcape Hotel Group	485.93	0.87	-1.70	1.09	STRONG BUY	20.60	11.38	-46.15	80.95	5.43	8.03	N/A
SGR	The Star Ent Grp	3236.85	3.55	2.06	3.66	BUY	33.95	36.13	-56.87	-6.05	3.00	0.00	N/A
SKC	Skycity Ent Grp Ltd	2166.58	2.92	1.40	3.52	STRONG BUY	40.29	34.04	-68.66	18.37	3.18	1.65	N/A
SLK	Sealink Travel Grp	1295.11	5.99	0.84	6.08	BUY	34.74	22.86	-27.44	51.95	1.79	2.19	N/A
SUL	Super Ret Rep Ltd	2610.33	12.04	2.25	11.53	BUY	16.43	15.93	-3.11	3.10	1.45	3.92	N/A
TAH	TABCORP Holdings Ltd	7671.30	3.44	-0.29	3.64	HOLD	25.55	23.65	-31.81	8.02	3.46	2.31	N/A
TPW	Temple & Webster Ltd	1561.07	13.65	5.02	11.40	BUY	195.00	82.63	577.64	136.00	0.00	0.00	N/A
WEB	Webjet Limited	1423.81	4.00	-4.05	3.70	HOLD	85.32	-20.58	-89.74	-514.63	1.10	0.00	N/A
WES	Wesfarmers Limited	53075.06	47.87	0.47	48.70	HOLD	27.13	27.58	1.42	-1.63	3.11	3.20	N/A

➤ Staple stocks:

Code	Company Name	Market Cap (\$m)	Price (\$)	Daily Price Change (%)	Consensus Target Price (\$)	Consensus Rating	2020 PE	2021 PE	2020 EPS GROWTH	2021 EPS GROWTH	2020 Div Yield	2021 Div Yield	Newsflash
AZM	The A2 Milk Company	10797.24	14.91	0.41	16.35	HOLD	30.36	29.74	27.90	2.09	0.00	0.00	Becoming a substantial holder
AAC	Australian Agricul.	675.10	1.10	-0.89	1.40	STRONG BUY	-35.32	-31.29	13.89	-12.90	0.00	0.00	N/A
AHY	Asaleo Care Limited	556.70	1.02	0.00	1.24	BUY	14.53	13.86	27.17	4.84	2.25	4.78	N/A
BGA	Bega Cheese Ltd	1136.03	5.25	0.76	5.70	HOLD	41.30	24.48	-31.16	68.72	1.66	2.21	N/A
BKL	Blackmores Limited	1271.73	65.61	-0.87	67.00	HOLD	58.71	38.04	-67.91	54.33	0.00	1.65	N/A
BUB	Bubs Aust Ltd	495.54	0.79	-0.61	0.78	SELL	-65.42	-196.25	N/A	66.67	0.00	0.00	Appendix 2A
BWX	BWX Limited	616.78	4.68	2.04	5.02	BUY	39.08	35.12	30.87	11.27	0.87	1.06	N/A
CCL	Coca-Cola Amatil	7406.52	10.19	-1.08	9.85	BUY	24.24	20.44	-19.26	18.57	2.55	4.01	N/A
CGC	Costa Group Holdings	1491.09	3.77	2.15	3.60	BUY	31.73	21.78	47.83	45.69	1.93	2.68	N/A
COL	Coles Group	23490.50	18.09	1.02	19.90	BUY	25.74	24.21	4.92	6.32	3.24	3.45	N/A
ELD	Elders Limited	1837.89	12.00	1.02	11.81	BUY	18.20	16.14	30.59	12.76	1.68	2.01	N/A
FNP	Freedom Food Ltd	834.10	3.01	0.00	3.27	HOLD	72.83	29.32	-46.74	148.42	0.00	0.85	N/A
GNC	GrainCorp Limited	917.71	4.04	-0.50	4.75	BUY	-290.86	21.19	95.91	1472.71	0.10	2.64	N/A
ING	Inghams Group	1137.34	3.05	-0.65	3.64	BUY	14.41	14.39	-24.90	0.14	4.57	5.08	N/A
MTS	Metcash Limited	2964.85	3.00	1.03	3.37	BUY	13.39	14.70	-2.29	-8.89	4.06	4.13	N/A
SHV	Select Harvests	725.33	6.45	0.00	7.43	BUY	25.55	20.70	-49.17	23.46	2.20	2.88	N/A
SM1	Synlait Milk Ltd	916.26	5.24	2.74	5.98	HOLD	12.63	12.98	-13.30	-2.65	0.00	0.00	N/A
TGR	Tassal Group Limited	786.16	3.71	-0.81	4.75	BUY	11.63	11.27	-0.78	3.21	4.94	4.99	N/A
TWE	Treasury Wine Estate	6636.35	9.28	0.22	12.35	BUY	21.13	19.43	-28.27	8.75	2.92	3.29	N/A
UMG	United Malt Group	1274.50	4.26	1.17	4.73	BUY	22.15	18.29	N/A	21.09	0.61	2.86	N/A
WOW	Woolworths Group Ltd	48007.81	38.83	0.87	42.25	BUY	29.76	27.02	-1.31	10.16	2.46	2.69	N/A

➤ Healthcare stocks:

Code	Company Name	Market Cap (\$m)	Price (\$)	Daily Price Change (%)	Consensus Target Price (\$)	Consensus Rating	2020 PE	2021 PE	2020 EPS GROWTH	2021 EPS GROWTH	2020 Div Yield	2021 Div Yield	Newsflash
ANN	Ansell Limited	5002.28	39.97	0.87	41.00	HOLD	24.39	21.73	3.27	12.26	1.78	1.96	ANSELL FY20 SUSTAINABILITY REPORT
API	Australian Pharm.	504.97	1.04	0.00	1.10	SELL	16.30	12.01	-40.79	35.74	0.96	6.50	N/A
AVH	Avita Therapeutics	577.53	7.27	-1.85	15.00	BUY	-16.40	-10.58	-23.15	-55.05	0.00	0.00	N/A
COH	Cochlear Limited	13988.23	215.60	0.55	204.00	HOLD	81.98	66.79	-43.41	22.74	0.75	0.55	N/A
CSL	CSL Limited	134974.50	302.29	1.37	315.87	BUY	46.76	43.69	3.38	7.02	0.96	1.02	CSL tightens earnings guidance range at AGM
CUV	Clinuvel Pharmaceut.	1150.77	23.40	1.37	28.89	STRONG BUY	N/A	89.48	N/A	N/A	N/A	0.08	N/A
EHE	Estia Health Ltd	382.80	1.45	-0.34	1.57	HOLD	14.06	21.30	-36.70	-34.02	5.63	4.00	N/A
FPH	Fisher & Paykel H.	18379.24	32.93	1.32	36.00	BUY	73.12	53.82	30.39	35.85	0.83	1.03	N/A
HLS	Healius	2186.76	3.56	2.28	3.46	HOLD	33.88	22.33	-33.18	51.75	1.26	1.77	N/A
IDX	Integral Diagnostics	818.01	4.14	0.97	4.60	BUY	27.28	22.68	-8.82	20.28	2.37	2.72	N/A
MSB	Mesoblast Limited	1959.20	3.26	-0.30	3.60	HOLD	-18.14	-20.09	50.74	9.70	0.00	0.00	N/A
MVF	Monash IVF Group Ltd	249.37	0.63	-0.78	0.73	BUY	13.48	13.31	-44.41	1.31	2.05	4.76	N/A
MVP	Medical Developments	349.77	5.88	12.01	8.61	BUY	766.62	420.00	-43.89	82.53	0.62	0.34	Appointment of CEO - Brent MacGregor
MYX	Mayne Pharma Ltd	537.30	0.32	0.00	0.37	HOLD	-213.33	49.23	-108.51	533.33	0.00	0.00	2020 Annual General Meeting
NAN	Nanosonics Limited	1699.67	5.74	2.30	5.50	SELL	128.82	142.08	25.52	-9.34	0.00	0.00	Appendix 2A
OPT	Opthea Limited	818.24	2.93	-7.24	4.90	BUY	-19.98	67.09	-56.03	129.77	0.00	0.00	N/A
PAR	Paradigm Bio.	677.57	3.08	4.33	2.54	HOLD	-40.79	-21.10	-98.68	-93.38	0.00	0.00	N/A
PME	Pro Medicus Limited	2891.87	29.01	4.14	29.00	HOLD	125.58	102.46	34.41	22.57	0.41	0.49	N/A
PNV	Polynovo Limited	1540.34	2.48	4.72	2.50	BUY	-594.72	476.92	10.71	224.70	0.00	0.00	N/A
RHC	Ramsay Health Care	15788.26	68.92	0.14	70.00	HOLD	40.53	34.27	-40.63	18.25	0.94	1.31	Ramsay Health Care Varies Agreement with NHS England
RMD	ResMed Inc.	8804.07	24.93	0.41	26.20	HOLD	39.43	38.14	25.10	3.37	0.92	0.95	N/A
SHL	Sonic Healthcare	16419.36	35.50	2.33	35.10	BUY	32.69	24.63	-6.40	32.71	2.13	2.88	Trading Update September 2020 Quarter Results
SIG	Sigma Health Ltd	614.43	0.57	-0.86	0.72	BUY	44.59	16.34	-70.42	172.85	3.13	0.53	Citi Group Investor conference presentation
SPL	Starpharma Holdings	600.10	1.54	3.69	2.03	STRONG BUY	-42.78	-62.86	-9.09	31.94	0.00	0.00	N/A
VRT	Virtus Health Ltd	358.54	4.43	-0.67	4.00	BUY	17.46	17.36	-27.98	0.59	2.93	3.46	2020 Annual Report

➤ Bank stocks:

Code	Company Name	Market Cap (\$m)	Price (\$)	Daily Price Change (%)	Consensus Target Price (\$)	Consensus Rating	2020 PE	2021 PE	2020 EPS GROWTH	2021 EPS GROWTH	2020 Div Yield	2021 Div Yield	Newsflash
AFG	Aust Finance Grp	619.96	2.25	-1.73	2.08	BUY	14.69	15.96	11.33	-7.94	3.79	4.13	AFG Sept 2020 Qtr Index
ANZ	ANZ Banking Grp Ltd	53910.23	19.30	-1.05	20.50	BUY	14.33	12.75	-39.73	12.35	2.96	4.11	N/A
BEN	Bendigo and Adelaide	3397.20	6.53	-0.94	6.83	SELL	11.31	12.87	-28.57	-12.13	5.61	3.92	N/A
BOQ	Bank of Queensland.	2862.31	6.73	5.24	6.00	HOLD	14.27	14.45	-40.13	-1.22	1.37	4.03	FY2020 Preliminary Final Report Appendix 4E
CBA	Commonwealth Bank.	121720.75	68.67	-1.03	67.56	HOLD	16.42	17.61	-14.18	-6.79	3.95	3.70	Final Directors Interest Notice
GMA	Genworth Mortgage	643.52	1.65	-1.60	2.37	HOLD	-10.51	12.65	-156.91	183.07	0.76	4.41	N/A
MYS	MyState Limited	348.80	3.83	0.00	4.30	BUY	11.30	10.51	-0.59	7.45	6.51	6.73	N/A
NAB	National Aust. Bank	62478.87	19.10	-1.32	20.50	BUY	14.93	13.16	-30.54	13.44	3.25	4.27	N/A
VUK	Virgin Money UK PLC	1472.92	1.60	-3.90	1.80	HOLD	14.47	8.62	-76.82	67.90	0.00	0.92	N/A
WBC	Westpac Banking Corp	66996.75	18.70	-1.40	19.80	BUY	19.79	12.67	-52.33	56.18	1.60	4.26	Westpac to consolidate its international operations

➤ Diversified Financials / Insurance stocks:

Code	Company Name	Market Cap (\$m)	Price (\$)	Daily Price Change (%)	Consensus Target Price (\$)	Consensus Rating	2020 PE	2021 PE	2020 EPS GROWTH	2021 EPS GROWTH	2020 Div Yield	2021 Div Yield	Newsflash
AEF	Australian Ethical	516.98	4.73	4.78	-	-	N/A	N/A	N/A	N/A	N/A	N/A	AEF - Quarterly FUM Announcement
AMP	AMP Limited	4862.79	1.41	-1.06	1.55	HOLD	14.13	12.60	-43.19	12.11	7.22	4.07	N/A
ASX	ASX Limited	15934.82	83.31	0.22	73.00	SELL	32.09	33.44	1.34	-4.05	2.81	2.69	N/A
AUB	AUB Group Ltd	1307.59	17.56	-0.23	17.00	BUY	25.50	22.41	7.70	13.79	2.63	2.93	N/A
CCP	Credit Corp Group	1286.40	19.80	0.21	22.03	BUY	14.79	19.36	-5.22	-23.62	2.69	2.59	N/A
CGF	Challenger Limited	2857.85	4.29	2.13	4.50	HOLD	8.48	10.86	-11.37	-21.93	4.46	4.83	First quarter performance update
CNI	Centuria Capital	1202.54	2.30	0.00	2.30	STRONG BUY	19.22	20.67	-5.77	-7.04	4.26	3.64	Citi Australia and NZ Investment Conference Presentation
ECX	Eclixp Group Ltd	551.37	1.63	-2.03	1.70	BUY	13.00	12.24	17.04	6.20	0.00	1.95	N/A
FXL	FlexiGroup Limited	559.65	1.11	-0.88	1.36	HOLD	10.65	10.42	-47.24	2.18	4.41	2.40	N/A
HUB	HUB24 Ltd	1306.11	21.88	3.18	18.70	BUY	101.82	74.74	38.51	36.24	0.36	0.55	N/A
IAG	Insurance Australia	11069.91	4.78	-2.51	5.80	BUY	33.62	15.53	-64.46	116.52	2.18	4.56	N/A
IHL	IOOF Holdings Ltd	2136.28	3.22	-1.22	4.61	BUY	9.69	12.20	-35.24	-20.59	8.12	5.44	N/A
JHG	Janus Henderson	1416.40	39.42	1.66	35.50	BUY	11.52	11.66	-6.96	-1.17	5.32	5.39	N/A
MFG	Magellan Fin Grp Ltd	11624.31	63.89	-0.49	60.00	HOLD	26.74	26.07	18.82	2.55	3.39	3.51	N/A
MNY	Money3 Corporation	422.45	2.30	0.00	2.86	BUY	16.25	12.41	-29.34	30.98	4.35	4.86	N/A
MPL	Medibank Private Ltd	7105.33	2.64	0.39	2.80	HOLD	20.55	19.46	-22.11	5.63	4.34	4.38	N/A
MQG	Macquarie Group Ltd	46854.49	131.18	0.16	130.92	BUY	16.02	21.58	-5.84	-25.75	4.08	2.77	N/A
NGI	Navigator Global Ltd	251.33	1.51	-2.26	2.27	STRONG BUY	6.26	10.43	-14.29	-39.98	14.32	9.44	September 2020 AUM Updated and earnings guidance
NHF	NIB Holdings Limited	1938.38	4.45	0.94	4.80	BUY	18.43	17.03	-31.17	8.23	3.82	3.57	N/A
NWL	Netwealth Group	4252.36	18.06	1.51	14.43	HOLD	101.21	85.10	21.64	18.93	0.78	0.92	N/A
OBL	Omni Bridgeway Ltd	1011.16	3.95	-0.25	5.45	BUY	-175.56	7.81	40.94	2346.67	1.52	1.77	Brisbane Floods Class Action - Update
OFX	OFX Group Ltd	284.11	1.17	0.00	-	-	19.42	19.42	-23.57	0.00	4.29	N/A	Change of Auditor
PDL	Pendal Group Ltd	1962.64	6.26	2.80	6.89	BUY	13.18	14.00	-7.59	-5.89	6.09	6.08	Funds under management - Quarter ended 30 September 2020
PNI	Pinnacle Investment	981.09	5.32	1.91	6.01	BUY	30.84	28.91	6.81	6.67	2.72	2.95	N/A
PPT	Perpetual Limited	1706.57	29.59	-2.75	34.80	BUY	15.39	14.94	-25.03	3.01	5.81	4.92	N/A
PTM	Platinum Asset	1912.57	3.23	-0.61	3.20	SELL	12.83	14.97	-7.42	-14.27	7.64	6.48	N/A
QBE	QBE Insurance Group	13370.15	9.11	-2.97	12.03	BUY	-21.43	12.98	-149.70	265.11	1.82	4.68	N/A
SDF	Steadfast Group Ltd	2987.56	3.56	1.74	3.90	BUY	23.06	21.32	12.01	8.17	2.47	2.90	N/A
SUN	Suncorp Group Ltd	11401.68	8.82	-3.59	10.26	BUY	16.79	13.50	-37.70	24.44	4.17	5.15	N/A
ZIP	Zip Co Ltd.	4124.31	7.58	-4.01	8.35	HOLD	-75.33	-70.59	-262.63	-6.71	0.00	0.00	Quarterly Update

➤ Property stocks:

Code	Company Name	Market Cap (\$m)	Price (\$)	Daily Price Change (%)	Consensus Target Price (\$)	Consensus Rating	2020 PE	2021 PE	2020 EPS GROWTH	2021 EPS GROWTH	2020 Div Yield	2021 Div Yield	Newsflash
ABP	Abacus Property Grp.	1950.52	2.95	0.34	2.90	BUY	15.81	16.28	-33.95	-2.89	6.20	5.97	N/A
ADI	Apn Industria REIT	513.57	2.66	1.54	2.73	BUY	13.50	14.17	7.65	-4.74	6.49	6.45	N/A
ARF	Arena REIT.	907.16	2.65	1.13	2.82	BUY	16.74	17.79	14.08	-5.87	5.29	5.40	Notice of Annual General Meeting/Proxy Form
AVN	Aventus Group	1327.95	2.36	-1.68	2.50	BUY	13.45	13.16	-2.56	2.24	5.06	5.96	N/A
BWP	BWP Trust	2620.93	4.12	0.25	3.23	SELL	22.98	22.86	-2.69	0.56	4.41	4.39	N/A
CHC	Charter Hall Group	6222.78	13.42	0.52	13.10	BUY	19.94	25.34	45.13	-21.31	2.67	2.82	N/A
CIP	Centuria I REIT	1619.02	3.22	0.94	3.21	HOLD	17.15	18.25	-43.38	-6.03	5.69	5.38	N/A
CLW	Chtr H Lwr	2568.42	5.21	0.00	5.47	BUY	17.98	17.66	6.94	1.79	5.37	5.60	N/A
CMW	Cromwell Prop	2299.89	0.89	-1.14	1.01	HOLD	11.47	12.76	0.96	-10.13	8.85	8.85	N/A
COF	Centuria Office REIT	1059.92	2.09	0.00	2.27	BUY	11.63	11.53	-14.55	0.83	8.50	7.94	N/A
CQE	Charter Hall Soc In	1019.85	2.80	0.35	3.20	BUY	16.33	18.06	-11.06	-9.62	5.71	5.32	N/A
CQR	Charter Hall Retail	2043.98	3.59	-0.84	3.55	HOLD	12.21	13.97	-5.13	-12.65	6.94	6.32	N/A
CWP	Cedar Woods Prop.	459.55	5.65	-0.18	5.80	HOLD	20.47	14.79	-57.11	38.41	3.19	3.63	N/A
DXS	Dexus	9929.94	9.17	-0.33	9.57	BUY	14.82	14.91	1.18	-0.60	5.39	5.15	N/A
GDI	GDI Property Grp	579.97	1.09	0.93	1.48	STRONG BUY	N/A	20.09	N/A	N/A	N/A	7.19	N/A
GMG	Goodman Group	34362.18	19.22	0.91	18.73	HOLD	33.43	31.03	12.11	7.72	1.56	1.56	N/A
GOZ	Growthpoint Property	2685.97	3.50	-0.29	3.56	BUY	14.99	14.69	1.19	2.01	6.26	5.77	N/A
GPT	GPT Group	7986.51	4.09	-0.49	4.35	BUY	15.91	13.45	-20.27	18.37	4.76	5.80	N/A
HPI	Hotel Property	492.20	3.18	-0.64	3.15	BUY	15.90	15.90	2.56	0.00	6.29	6.16	N/A
IAP	Investec Aust Prop	803.86	1.35	0.38	1.70	-	15.46	14.62	N/A	5.75	6.65	6.28	N/A
INA	Ingenia Group	1502.60	4.69	0.87	5.19	BUY	22.23	21.97	10.24	1.18	2.34	2.23	N/A
LIC	Lifestyle Communit.	1059.04	10.02	-0.49	9.90	BUY	37.74	28.11	-30.86	34.27	0.60	0.57	N/A
LLC	Lendlease Group	8162.85	12.21	0.51	13.77	BUY	85.92	18.80	-82.17	357.11	2.67	2.49	N/A
MGR	Mirvac Group	8938.25	2.27	-1.32	2.41	BUY	14.43	16.09	-5.39	-10.33	4.29	4.42	N/A
NSR	National Storage	1903.08	1.89	-0.27	1.83	HOLD	22.88	23.68	-16.06	-3.35	4.24	4.20	N/A
RFF	Rural Funds Group	795.14	2.40	2.55	2.43	BUY	15.66	16.24	10.98	-3.59	4.48	4.70	N/A
SCG	Scentre Grp	12041.68	2.26	-3.45	2.35	HOLD	14.81	11.70	-39.02	26.65	3.84	6.88	N/A
SCP	SCA Property Group	2422.29	2.25	-1.33	2.31	HOLD	14.91	15.56	-6.21	-4.15	5.88	5.58	N/A
SGP	Stockland	9611.26	4.09	-0.74	4.02	HOLD	12.69	13.39	-9.98	-5.18	5.95	5.93	N/A
URW	UnibailRodawestfield	620.44	2.93	-3.20	3.88	HOLD	4.38	4.21	-34.40	4.01	8.92	12.99	N/A
VCX	Vicinity Centres	6486.99	1.38	-3.86	1.38	HOLD	9.42	15.97	-18.15	-40.99	5.87	5.96	N/A
WPR	Waypoint REIT	2135.26	2.73	-0.37	2.88	BUY	18.15	17.11	0.94	6.12	5.50	5.85	N/A

➤ IT stocks:

Code	Company Name	Market Cap (\$m)	Price (\$)	Daily Price Change (%)	Consensus Target Price (\$)	Consensus Rating	2020 PE	2021 PE	2020 EPS GROWTH	2021 EPS GROWTH	2020 Div Yield	2021 Div Yield	Newsflash
AD8	Audinate Group Ltd	453.35	5.95	1.51	5.75	BUY	-612.77	-147.53	-331.19	-315.35	0.00	0.00	N/A
ALU	Altium Limited	4981.94	39.40	3.00	36.30	HOLD	85.33	68.36	-23.62	24.83	1.11	1.32	N/A
APT	Afterpay Limited	26160.24	96.09	1.77	96.28	BUY	-1108.43	1111.38	-120.64	199.73	0.00	0.00	Finalisation of AUSTRAC external audit
APX	Appen Limited	4405.16	36.08	-0.30	40.00	BUY	59.44	41.97	16.31	41.62	0.31	0.43	N/A
BVS	Bravura Solution Ltd	909.57	3.51	-1.36	4.80	HOLD	21.62	20.69	9.68	4.52	3.14	3.36	N/A
CDA	Codan Limited	2270.77	12.71	-0.16	10.50	BUY	36.34	29.50	41.79	23.17	1.42	1.80	N/A
CPU	Computershare Ltd	7215.33	13.07	-1.80	14.21	HOLD	17.05	18.80	-24.88	-9.30	3.06	3.22	N/A
DDR	Dicker Data Limited	1479.97	8.64	0.47	-	-	N/A	N/A	N/A	N/A	N/A	N/A	N/A
DTL	Data#3 Limited	1082.44	7.14	1.28	4.20	HOLD	46.82	40.34	27.08	16.07	1.95	2.24	N/A
ELO	Elmo Software	537.16	6.23	0.48	7.00	BUY	-28.66	-23.02	-93.67	-24.47	0.00	0.00	N/A
EML	EML Payments Ltd	1182.39	3.64	11.31	4.15	BUY	41.96	35.48	86.84	18.27	0.00	0.00	Investor Briefing
HSN	Hansen Technologies	805.15	4.13	0.74	4.20	BUY	20.75	16.81	17.06	23.45	1.49	2.43	N/A
IFM	Infomedia Ltd	592.84	1.59	0.00	2.00	BUY	29.26	28.73	6.74	1.85	2.61	2.56	Retirement of Non-Executive Director Clyde McConaghy
IRE	IRESS Limited	1949.83	10.02	-0.79	11.62	HOLD	25.89	24.49	-8.98	5.72	4.32	4.50	N/A
IRI	Integrated Research	640.49	3.72	-1.61	4.25	STRONG BUY	26.57	24.31	11.11	9.29	2.15	2.15	N/A
LNK	Link Admin Hldg	2651.05	4.99	-0.40	5.10	HOLD	19.54	22.07	-31.34	-11.44	2.36	2.26	N/A
MP1	Megaport Limited	2444.95	16.64	4.17	17.15	BUY	-69.33	-87.03	2.17	20.33	0.00	0.00	N/A
NEA	Nearmap Ltd	1240.57	2.69	8.30	3.13	BUY	-33.21	-45.49	-636.36	27.00	0.00	0.00	Presentation
NXT	Nextdc Limited	5998.37	13.60	0.00	13.80	BUY	-363.73	-1784.78	-169.38	79.62	0.00	0.00	N/A
TNE	Technology One	2704.43	8.59	2.48	8.48	HOLD	42.92	38.50	14.69	11.49	1.49	1.71	N/A
TYR	Tyro Payments	1998.59	3.95	1.00	3.50	HOLD	-89.10	-118.80	N/A	24.99	0.00	0.00	N/A
WTC	WiseTech Global Ltd	8780.27	28.07	-0.15	26.00	HOLD	128.61	102.17	21.32	25.89	0.12	0.16	N/A
XRO	Xero Ltd	16408.53	117.86	0.82	85.00	HOLD	1042.83	447.43	423.74	133.07	0.00	0.00	N/A

➤ **Communication stocks:**

Code	Company Name	Market Cap (\$m)	Price (\$)	Daily Price Change (%)	Consensus Target Price (\$)	Consensus Rating	2020 PE	2021 PE	2020 EPS GROWTH	2021 EPS GROWTH	2020 Div Yield	2021 Div Yield	Newsflash
CAR	Carsales.Com Ltd.	5466.52	22.27	-0.36	19.17	HOLD	45.46	38.73	-9.23	17.38	1.87	2.14	N/A
CNU	Chorus Limited	3609.27	8.12	-0.62	-	-	72.41	76.27	-6.84	-5.07	2.78	2.89	Ongoing disclosure notices - various
DHG	Domain Holdings Aus	2302.00	3.92	-0.25	3.50	HOLD	127.94	74.60	-57.11	71.51	0.77	0.84	N/A
EVT	Event Hospitality	1489.45	9.33	0.32	9.35	BUY	55.37	-311.00	-75.79	-117.80	2.25	1.66	N/A
NEC	Nine Entertainment	3325.52	2.03	2.05	2.05	BUY	23.18	22.70	-36.02	2.15	3.44	3.16	N/A
NWS	News Corp..	918.68	19.88	-0.05	25.00	BUY	80.19	55.55	-59.05	44.37	1.29	1.48	N/A
OML	Ooh!Media Limited	855.13	1.37	-3.11	1.25	BUY	-51.89	34.60	-116.49	250.00	0.00	0.44	N/A
REA	REA Group	15771.52	123.40	2.17	108.00	HOLD	61.46	53.44	-15.40	15.01	0.85	0.98	N/A
SEK	Seek Limited	8275.03	23.44	-0.64	20.45	HOLD	80.21	173.24	-47.41	-53.70	0.74	0.42	N/A
SLC	Superloop Limited	332.94	0.91	1.10	1.23	BUY	-9.72	-13.87	-30.69	29.91	0.13	0.11	N/A
SPK	Spark New Zealand	8037.12	4.37	0.69	-	HOLD	20.82	21.43	2.42	-2.86	5.37	5.13	N/A
SXL	Sthn Cross Media	435.95	0.16	-3.03	0.18	HOLD	6.90	12.31	-67.42	-43.97	7.50	0.00	N/A
TLS	Telstra Corporation.	33063.37	2.83	-2.16	3.50	BUY	15.35	20.74	-9.31	-26.02	5.63	5.48	N/A
TPG	TPG Telecom Limited	13945.06	7.47	-0.13	8.71	HOLD	50.79	37.52	N/A	35.35	0.82	1.64	N/A
UWL	Uniti Group Ltd	673.30	1.37	0.37	1.90	STRONG BUY	27.82	21.24	354.73	30.99	0.00	0.00	N/A
VOC	Vocus Group Ltd	2273.65	3.65	0.55	3.40	HOLD	21.47	21.24	4.41	1.09	0.00	0.00	Sustainability Report
VRL	Village Roadshow Ltd	419.90	2.11	-3.72	2.20	HOLD	-11.72	-17.70	-254.28	33.78	0.47	0.00	N/A

➤ **Utility stocks:**

Code	Company Name	Market Cap (\$m)	Price (\$)	Daily Price Change (%)	Consensus Target Price (\$)	Consensus Rating	2020 PE	2021 PE	2020 EPS GROWTH	2021 EPS GROWTH	2020 Div Yield	2021 Div Yield	Newsflash
AGL	AGL Energy Limited.	8317.50	13.45	-1.05	14.47	HOLD	10.73	13.56	-19.06	-20.81	7.10	7.28	N/A
APA	APA Group	12506.87	10.90	0.00	11.24	HOLD	41.22	41.70	2.37	-1.13	4.59	4.61	N/A
AST	AusNet Services Ltd	7393.51	2.00	0.25	1.90	HOLD	27.13	27.75	5.46	-2.24	5.04	4.62	N/A
SKI	Spark Infrastructure	3632.51	2.15	0.96	2.28	HOLD	46.86	58.63	-23.90	-20.07	6.40	5.72	N/A

Disclaimer

This document was prepared by Deep Data Analytics. Deep Data Analytics and its related bodies corporate ("DDA"), its directors and/or employees charge a subscription for this report. Deep Data Analytics as principal, its directors and/or employees and their associates may hold securities in the companies mentioned in this report. Deep Data Analytics may seek to do business with any of the companies outlined in this report and should not be considered independent. This document contains Deep Data Analytics proprietary processed data and publicly available information. The information has not been verified or audited, and you are strongly advised to make your own independent assessment and investigation in respect of any matters contained in the document, including to seek independent professional advice. The document has been provided to you for your general information purposes only. It does not consider your particular investment objectives, financial situation or other specific needs. This report has been provided to you on the condition that it is purely general advice and not to be considered as personal advice at any level.

Deep Data Analytics or their respective directors, officers, employees or shareholders makes any representation or warranty, expressed or implied, and takes no responsibility, in respect of the accuracy, reliability, completeness or thoroughness of any of the information contained in this document. Each of those parties, to the maximum extent permitted by law, expressly disclaims, and as a recipient, you expressly release each of those parties from, all liabilities, including (without limitation) liability for negligence in respect of, any part of the information contained in the document. No such parties are under any obligation to update any information in this document or correct any inaccuracies or omissions that may exist or become apparent. Neither this document nor any additional information which may subsequently be provided to a recipient shall constitute or form part of any offer, solicitation, invitation, advice or recommendation to sell or acquire any securities or assets.

Deep Data Analytics provides this financial advice as an honest and reasonable opinion held at a point in time about an investment's risk profile and merit and the information is provided by the Deep Data Analytics in good faith. The views of the adviser(s) do not necessarily reflect the views of the AFS Licensee. Deep Data Analytics has no obligation to update the opinion unless Deep Data Analytics is currently contracted to provide such an updated opinion. Deep Data Analytics does not warrant the accuracy of any information it sources from others. All statements as to future matters are not guaranteed to be accurate and any statements as to past performance do not represent future performance. Assessment of risk can be subjective. Portfolios of equity investments need to be well diversified and the risk appropriate for the investor. Equity investments in listed or unlisted companies yet to achieve a profit or with an equity value less than \$50 million should collectively be a small component of a balanced portfolio, with smaller individual investment sizes than otherwise. Investors are responsible for their own investment decisions, unless a contract stipulates otherwise. Deep Data Analytics does not stand behind the capital value or performance of any investment. Subject to any terms implied by law and which cannot be excluded, Deep Data Analytics shall not be liable for any errors, omissions, defects or misrepresentations in the information (including by reasons of negligence, negligent misstatement or otherwise) or for any loss or damage (whether direct or indirect) suffered by persons who use or rely on the information. If any law prohibits the exclusion of such liability, Deep Data Analytics limits its liability to the re-supply of the Information, provided that such limitation is permitted by law and is fair and reasonable.

Copyright © Deep Data Analytics. All rights reserved. This material is proprietary to Deep Data Analytics and may not be disclosed to third parties. Any unauthorized use, duplication or disclosure of this document is prohibited. The content has been approved for distribution by Deep Data Analytics (ABN 67 159 532 213 AFS Representative No. 1282992) which is a corporate approved representative of BR Securities (ABN 92 168 734 530 and holder of AFSL No. 456663). Deep Data Analytics is the business name of ABN 67 159 532 213.