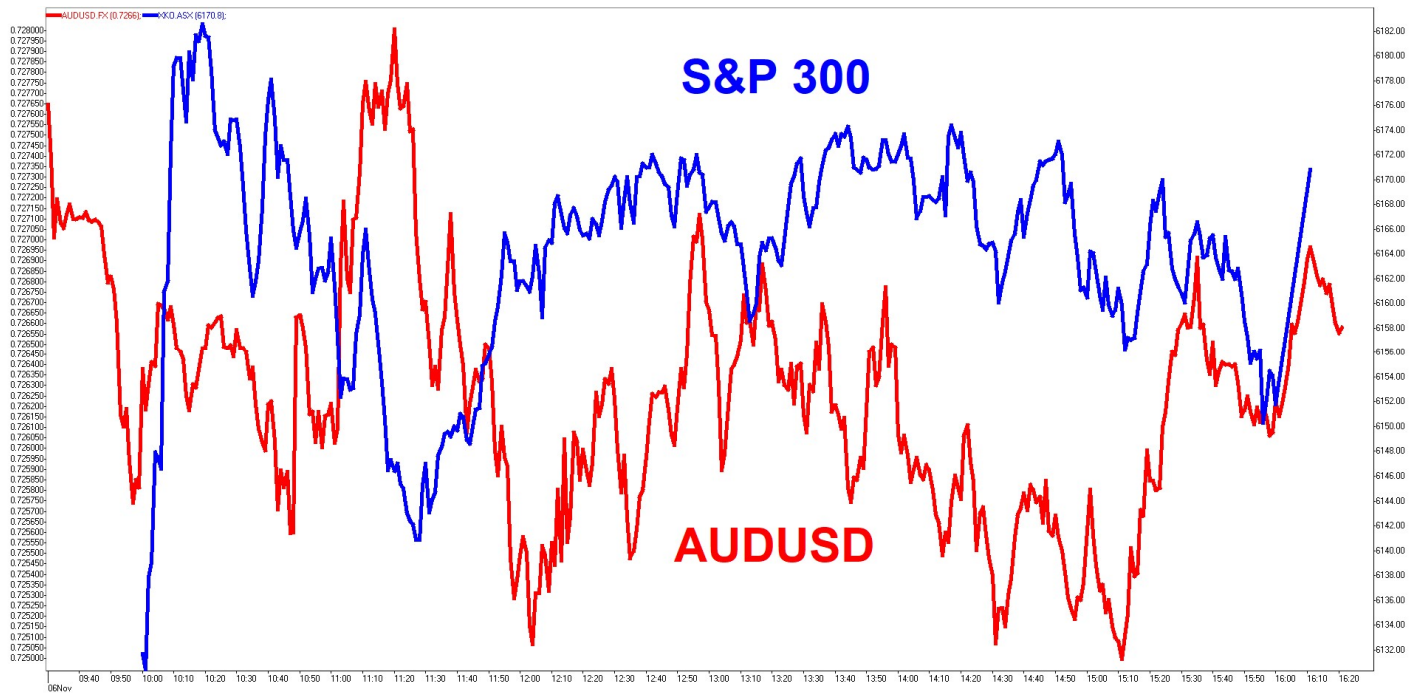


SUNSET STRIP

DEEP DATA ANALYTICS

INVESTMENT MOTTO: "Life is all about cycles. You evolve with the cycles or they run over you."

MARKET SNAPSHOT AND INTRADAY CHART



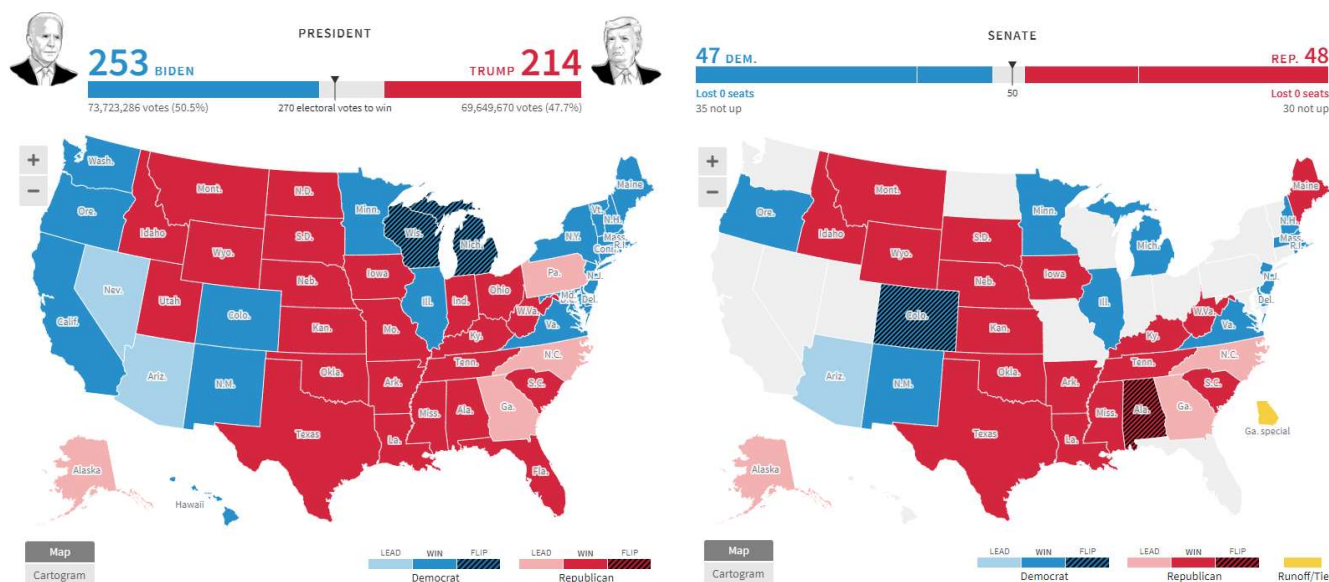
Security	Last	+/-	%	Security	Last	+/-	%	Security	Last	+/-	%
S&P 300	6170.80	51.40	0.84	DXY	92.6200	0.0700	0.08	SPTGLD	1940.72	-8.48	-0.44
S&P 200	6190.20	50.60	0.82	AUDUSD	0.7265	-0.0018	-0.25	TWI	60.40	0.20	0.33
All Ords	6395.00	51.00	0.80	NZDAUD	0.9337	0.0040	0.43	WTIS	37.71	-1.08	-2.78
Small Ords	2878.20	36.40	1.28	GBPAUD	1.8074	0.0025	0.14	BRENT	39.86	-1.06	-2.59
Micro Cap	1725.90	27.00	1.59	EURAUD	1.6273	0.0035	0.22	COPP3M	6808.00	48.00	0.71
NZ50G	12337.02	87.04	0.71	EURUSD	1.1823	-0.0003	-0.03	NICK3M	15506.00	84.00	0.54
JAPAN	24340.30	235.02	0.98	USDJPY	103.4465	-0.0425	-0.04	ZINC	2593.50	46.00	1.81
KOSPI	2411.32	-2.47	-0.10	CNYUSD	0.1509	-0.0006	-0.37	Security	Last	+/-	%
SING	2572.80	-15.82	-0.61	Security	Last	+/-	%	DOWFUT	28145.00	-152.00	-0.54
SHANGHAI	3294.55	-25.58	-0.77	USBON	0.7672	0.0001	0.02	NASFUT	11944.00	-132.50	-1.10
HNGKNG	25629.54	-66.38	-0.26	USLBR	1.5244	-0.0187	-1.21	SPFUT	3483.00	-21.75	-0.62
GERMAN	12568.09	243.87	1.98	BOND10	0.7610	0.0185	2.49				
CAC40	4983.99	61.14	1.24	BBSR3M	0.0220	-0.0069	-23.88				
FTSE	5906.18	22.92	0.39	VIX	27.58	-1.99	-6.73				
DOWJON	28390.18	542.52	1.95	XVI	19.74	0.27	1.40				
NASDAQ	11890.93	300.15	2.59								
SP500	3510.45	67.01	1.95								

Sources: AFR, AAP, ASX, Bloomberg, CNBC, CNN, FactSet, Hedgeye, IRESS, Market Watch, Thomson Reuters, S&P, SMH, Trading Economics

MARKET COMMENTARY:

1. Local market had a positive day but the momentum seems to be running out of gas from the global asset allocation trade. The key positives for the market remain with the stimulus upside from weak economic recovery. Election uncertainty and Covid pandemic are the overhang on the global economy struggling to recover from the recession damage. Macro trade back into equities and bonds seems to be fading while BOE adding QE and ECB / US Fed are talking positive on stimulus. The relative calmness in the bond market over the last 24 hours suggests we may be at the back end of the macro asset allocation trade. Pandemic cases are rising fast in EU and US while geopolitics between China and Australia has reached danger territory!!!

US election is in the late cycle as fraud calls and legal challenges are flying thick and fast as the numbers get tight. The latest election update shows that Democrats are likely to flip the White House than Republicans holding it. Senate looks safe for Republicans but nothing is certain. Numbers are moving around due to historical high voting turnout and historical high pre/postal voting. We should have enough data in key states to put one side over the line on the weekend. Elevated risk of market and social volatility due to the polarized state of US!!!

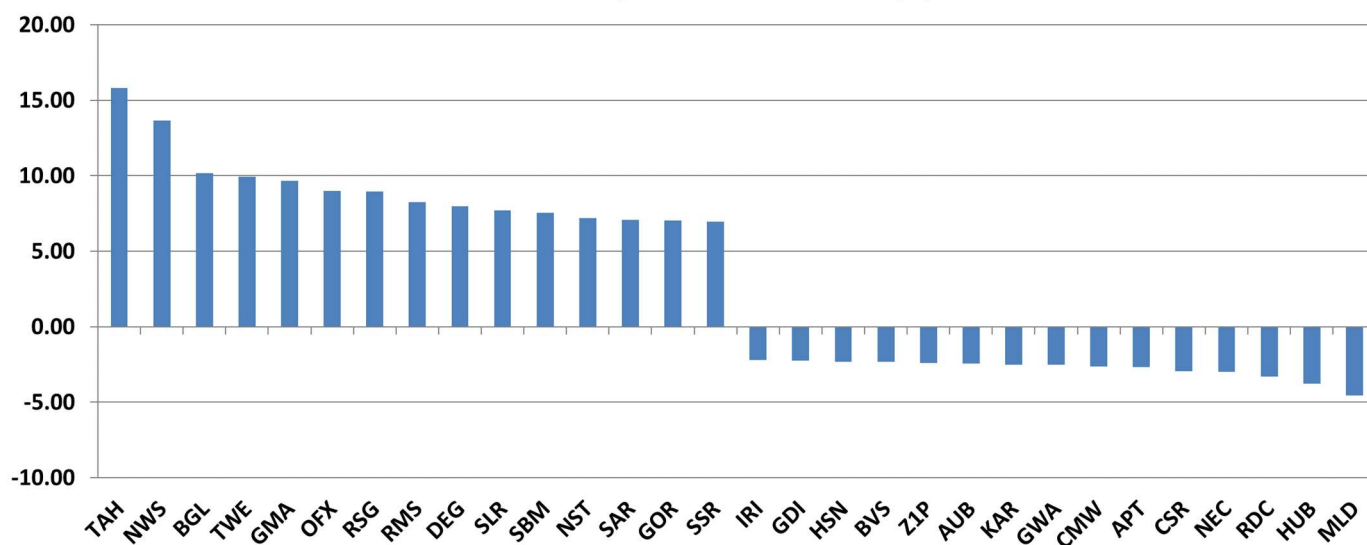


Overnight the US market had another solid positive day while bonds took a break. Election uncertainty and social unrest remains elevated while we may get clarity on the numbers later today...pre legal challenges!!! BOE added more QE while US Fed and ECB were flagging more needs to be done. Looks like everyone waiting for the election mess to clear before acting... unlike wasted RBA cuts that just boosted bank profits. USD and Oil fell again while Gold running up again. AUDUSD moved closer to 73 cents. All sectors in the green except Energy with Gold ripping higher. There is a lot of water to go under the election bridge before it settles...even if the numbers give a guide today!!!

Remain nimble, contrarian and cautiously pragmatic with elevated global macro risks!!! Buckle up...it's going to get bumpy!!!

2. Movers and Shakers in S&P 300 >

S&P 300 Best/Worst 15 Performers (%)



3. CNN Fear & Greed Index >



4. **Amcor (AMC +4.08%)** > Packaging company Amcor PLC raised its earnings view and unveiled a US\$150 million share buyback following a strong performance in its fiscal first quarter. Amcor said it now expected growth in adjusted earnings per share of 7-12% after stripping out the impact of currency swings, up from a prior expectation for a 5-10% increase. Adjusted earnings per share rose by 20% to 15.8 U.S. cents in the three months through September after stripping out the impact of currency swings. Amcor said its adjusted earnings before interest and tax totalled US\$358 million in the quarter, up 9% at constant exchange rates. **ASX**
5. **Beach Energy (BPT +0.82%)** > Red Sky Energy Limited ("Red Sky" or "the Company", ASX: ROG) is pleased to advise that it, through its wholly owned subsidiary Red Sky (Killanoola) Pty Ltd, has entered into a binding Sale and Purchase Agreement (SPA) with Beach Energy Ltd ("Beach", ASX: BPT) subsidiary to acquire that subsidiary's interest for South Australian Petroleum Retention Licence 13 (PRL-13) which contains the Killanoola oilfield. PRL-13 covers an area of 17.5 sq km and is located in southeastern South Australia close to the Jacaranda Ridge and Haselgrove Gas Fields and Katnook Gas Processing Facility in the Penola Trough of the onshore Otway Basin. **ASX**
6. **Event Hospitality & Entertainment (EVT +1.57%)** > EVENT Hospitality & Entertainment Limited (the "Group") today provided an update regarding the sale of its German cinema exhibition operation ("Cinestar") to Vue International Bidco plc ("Vue") (the "Transaction"). Vue has applied for, and the German Federal Cartel Office ("FCO") has granted, a further extension to 14 December 2020 of the deadline for completion of the divestment process required for FCO approval of the Transaction. **ASX**
7. **IRESS (IRE +1.52%)** > Iress is pleased to announce that the Scheme has been successfully implemented today. Iress chief executive, Andrew Walsh, said: "A combined Iress and OneVue will bring advice and investments closer together, leveraging combined strengths in the administration of managed funds, superannuation and investment, along with our position in technology and data. **ASX**
8. **Macquarie Group (MQG +2.27%)** > Macquarie Group (ASX: MQG; ADR: MQBKY) today announced a net profit after tax attributable to ordinary shareholders of \$A985 million for the half year ended 30 September 2020 (1H21), down 32 per cent on the half year ended 30 September 2019 (1H20) and down 23 per cent on the half year ended 31 March 2020 (2H20). **ASX**
9. **News Corp (NWS +13.66%)** > News Corp has started the fiscal year strongly, with higher revenue in many of our segments during the first quarter, and a 21 percent increase year-on-year in profitability, despite the disruptive economic consequences of COVID-19. Total revenues for the quarter were \$2.1 billion, a fall of 10 percent, but that contraction was largely due to the sale of News America Marketing, and the adjusted decline was 3 percent. Meanwhile, three of our segments, Dow Jones, Digital Real Estate Services and Book Publishing, reported year-over-year Segment EBITDA increases of at least 45 percent, highlighting the success of our investment strategy in publishing and digital real estate. **ASX**
10. **OFX Group (OFX +9.02%)** > OFX Group Limited (OFX) today announced a strategic alliance with WiseTech Global ("WiseTech", ASX: WTC) where OFX will become WiseTech's preferred provider for international payments. The alliance will allow WiseTech and its customers to make simple and efficient international payments at highly competitive rates using OFX. **ASX**
11. **REA Group (REA -0.45%)** > Group financial highlights from core operations¹ for the three months ended 30 September 2020 include revenue² of \$195.7 million and EBITDA of \$123.8 million. The Group delivered an excellent result for the quarter ended 30 September 2020 despite ongoing impacts of COVID-19 on property markets. **ASX**
12. **Synlait Milk (SM1 +6.47%)** > Synlait Milk Limited (Synlait) and New Zealand Industrial Park Limited and Karl Ye have reached a settlement regarding the historic land covenants at the

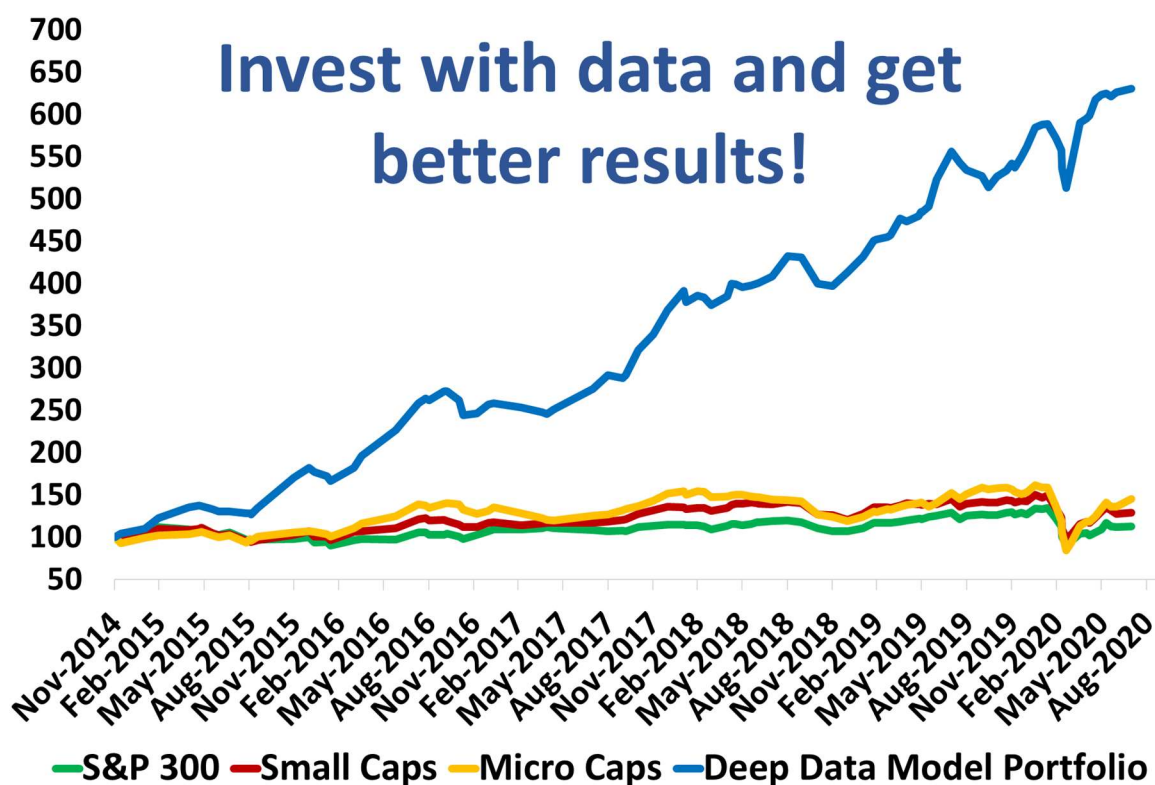
company's Pokeno site. Synlait CEO Leon Clement commented: "Synlait and New Zealand Industrial Park are committed to working collaboratively for the benefit and integration of the Pokeno community and are pleased to have this behind us. We are also pleased to provide certainty for Synlait's shareholders, customers, farmer suppliers and staff." **ASX**

13. **Suncorp (SUN +1.34%)** > As of 6 November, Suncorp had received around 6,400 claims related to the QLD NSW Hail event, comprising approximately 3,300 motor claims, 2,800 home claims and 300 commercial claims. Claims numbers are expected to increase, as customers continue to lodge their claims. Including the QLD NSW Hail event, Suncorp currently estimates total natural hazard costs across Australia and New Zealand for the four-month period to 31 October 2020, will be \$348 - \$408 million. These estimates exclude any associated risk margin or claims handling expenses. Details of event costs during the period have been provided below. **ASX**
14. **Tabcorp Holdings (TAH +15.82%)** > Tabcorp Holdings Limited (the Company or Tabcorp) refers to an article in today's edition of The Australian titled "Private equity and Matthew Tripp circle Tabcorp in potential break-up deal for wagering giant". Tabcorp is not aware of, and has not received, any proposal in respect of the Company or its businesses. **ASX**
15. **Vicinity Centres (VCX +0.72%)** > Mr Grant Kelley, CEO and Managing Director, said: "We are very pleased to have our Melbourne retailers re-open over the past week and have seen centre visitation return to 79% of the prior year level across our Victorian centres. This includes our CBD-located centres, Emporium Melbourne and DFO South Wharf, with visitation at 48% and 64% of last year respectively. This follows a 12-week period where 83% of our Victorian tenancies were closed due to government directives. **ASX**
16. **West African Resources (WAF +3.92%)** > Unhedged gold producer West African Resources Limited ('West African' or the 'Company', ASX: WAF) is pleased to announce it has completed a US\$25 million voluntary early repayment of its finance facility (the Debt Facility) with Taurus Funds Management Pty Ltd (Taurus). **ASX**

Deep Data Analytics

Deep Data Analytics is the brainchild of Mathan Somasundaram, a 25-year veteran of the finance and technology sectors. In an increasingly volatile and uncertain economic and political landscape, Mathan saw the need for a dynamic data-driven investment strategy that can be used to optimise the risk-adjusted returns for investors. Seamlessly combining top-down and bottom-up approaches, the vertically integrated, multi-tiered model has been carefully calibrated over the years to rapidly adapt to evolving macro conditions and thereby ensure an effective and dynamic trade-off between risk and return.

Deep Data Analytics has been used as the focal point of strategy in macro marketing documents to Institutional and High Net Worth clients for over a decade. With successive years of consistent and reliable returns despite major disruptive thematic cycles, Deep Data Analytics is widely recognised as one of the leading integrated investment strategies in the market. And now, with the inclusion of a variety of risk/return investment options and insights, breadth of users from institutional to retail investors have access to cutting-edge analytics at their fingertips.



For more information visit... www.deepdataanalytics.com.au

Or email... info@deepdataanalytics.com.au

US market overnight - Reuters

U.S. stocks jumped on Thursday, as investors bet Republicans would retain control of the Senate and block any major policy changes under a possible Joe Biden White House that could dampen corporate profits.

With votes still being counted in battleground states, investors were abandoning cautious pre-election positioning, driving all of Wall Street's main indexes up for a fourth straight session.

While a fiscal stimulus package is widely expected, the size of any deal reached in a divided Congress is likely to be much smaller than anticipated. This in turn could pressure the U.S. Federal Reserve to pump more funds into the financial system, supporting equity prices.

Stocks got a brief additional boost from the Fed's statement on Thursday. The central bank kept its loose monetary policy intact and again pledged to do whatever it can to sustain an economy severely damaged by the coronavirus pandemic. In the post-statement press conference, Chair Powell said the Fed would not consider directly funding fiscal activities.

Biden was edging closer to victory after winning Michigan and Wisconsin, but his Democratic party appeared unlikely to win the Senate. This eased investor worries about tighter regulations on Big Tech and a corporate tax hike.

"They stayed with what the market had expected. I think there's concern about the economy and the trajectory of the economy. But basically, I don't think they surprised the market; they maintained their accommodative stance and maintained that fiscal stimulus is needed," said Quincy Krosby, chief market strategist at Prudential Financial in Newark, New Jersey.

"Given the scenario of an election where you're still counting ballots, it would be very difficult for the Fed to insert itself at this point."

Some market participants cautioned, however, that it was not yet certain that Congress will remain split, so there is a slim chance markets could be in for a shock.

Unofficially, the Dow Jones Industrial Average rose 542.85 points, or 1.95%, to 28,390.51, the S&P 500 gained 66.97 points, or 1.94%, to 3,510.41 and the Nasdaq Composite added 300.15 points, or 2.59%, to 11,890.93.

This week's rally marked the biggest four-day percentage gain for each of the three major indexes in nearly seven months.

The tech-heavy Nasdaq, packed with "stay-at-home" corporate winners under this year's lockdowns, gained well over 2% and was within striking distance of its Sept. 2 record closing high.

The Philadelphia SE semiconductor index surged to close at an all-time high, while technology and provided the biggest boost to the S&P 500.

All 11 of the major S&P 500 sectors moved higher in a broad rally, and the VIX volatility index, which has risen in recent months as investors feared the vote might spark falls in shares, touched its lowest in three weeks.

The materials index also hit a record, boosted by a rise in shares of U.S.-German industrial gas producer Linde.

Qualcomm Inc rocketed higher after the chipmaker forecast fiscal first-quarter revenue above estimates as it predicted solid growth in 5G smart phones sales next year.

US Movers and Shakers - CNBC

MARKET MOVERS

S&P NASDAQ DOW EUR ASIA COVID19

TOP

ALB	Albemarle Corp	12.919%	<div></div>
QCOM	Qualcomm Inc	12.747%	<div></div>
QRVO	Qorvo Inc	9.683%	<div></div>
PH	Parker-Hannifin...	9.638%	<div></div>
PRGO	Perrigo Compa...	9.494%	<div></div>

BOTTOM

HBI	HanesBrands Inc	18.571%	<div></div>
BIIB	Biogen Inc	7.516%	<div></div>
INCY	Incyte Corp	7.192%	<div></div>
PAYC	Paycom Softwa...	6.082%	<div></div>
JKHY	Jack Henry & A...	5.393%	<div></div>

MARKET MOVERS

S&P NASDAQ DOW EUR ASIA COVID19

TOP

QCOM	Qualcomm Inc	12.747%	<div></div>
MELI	Mercadolibre Inc	9.281%	<div></div>
AMAT	Applied Materia...	7.848%	<div></div>
SWKS	Skyworks Soluti...	6.873%	<div></div>
UAL	United Airlines ...	6.029%	<div></div>

BOTTOM

BIIB	Biogen Inc	7.516%	<div></div>
INCY	Incyte Corp	7.192%	<div></div>
NTES	NetEase Inc	2.242%	<div></div>
BMRN	Biomarin Pharm...	1.728%	<div></div>
ULTA	Ulta Beauty Inc	1.408%	<div></div>

MARKET MOVERS

S&P NASDAQ DOW EUR ASIA COVID19

TOP

DOW	Dow Inc	5.425%	<div></div>
CAT	Caterpillar Inc	5.064%	<div></div>
JPM	JPMorgan Chas...	4.09%	<div></div>
CRM	Salesforce.Com...	3.781%	<div></div>
BA	Boeing Co	3.601%	<div></div>

BOTTOM

MRK	Merck & Co Inc	0.199%	<div></div>
UNH	UnitedHealth G...	0.045%	<div></div>
JNJ	Johnson & John...	0.258%	<div></div>
CVX	Chevron Corp	0.516%	<div></div>
KO	Coca-Cola Co	0.549%	<div></div>

MARKET MOVERS

S&P NASDAQ DOW EUR ASIA COVID19

TOP

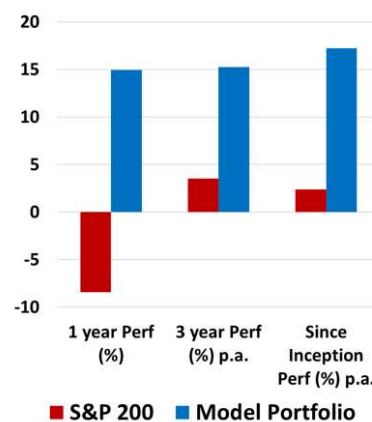
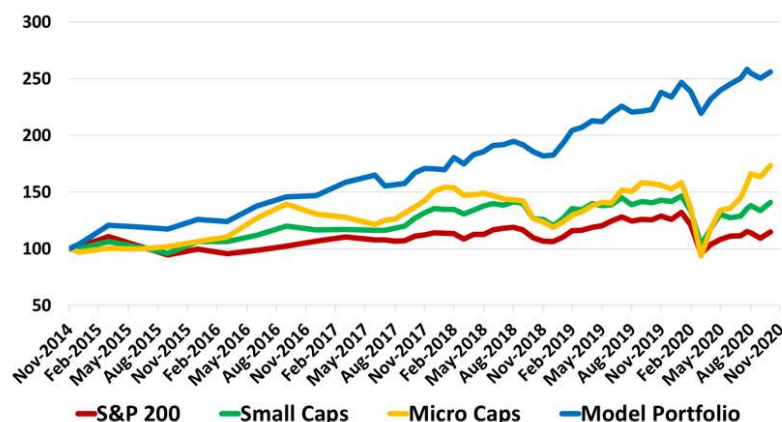
NVAX	Novavax Inc	6.692%	<div></div>
QDEL	Quidel Corp	5.769%	<div></div>
MESO	Mesoblast Ltd	4.116%	<div></div>
HOLX	Hologic Inc	3.959%	<div></div>
LZAGY	Lonza Group AG	2.777%	<div></div>

BOTTOM

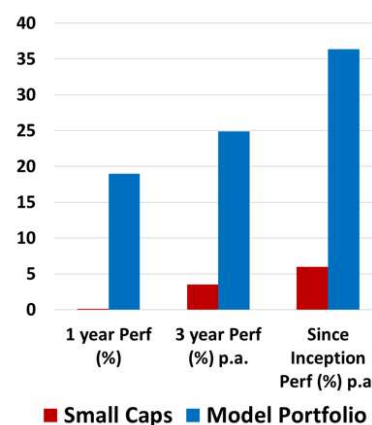
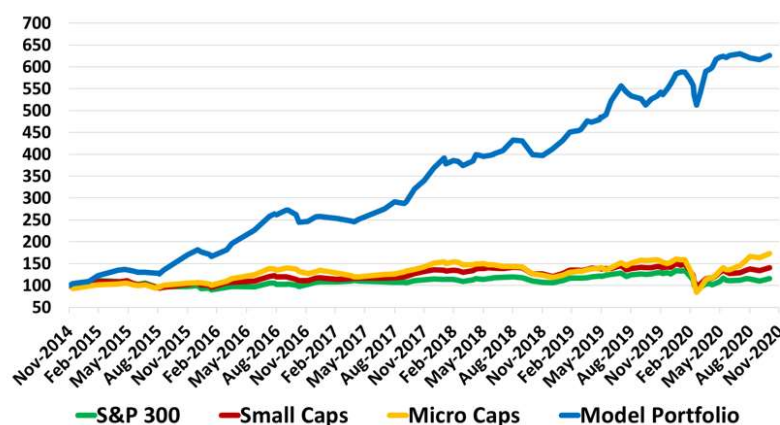
BIIB	Biogen Inc	7.516%	<div></div>
TBIO	Translate Bio Inc	2.725%	<div></div>
LLY	Eli Lilly and Co	2.066%	<div></div>
SRNE	Sorrento Thera...	2.055%	<div></div>
VIR	Vir Biotechnolo...	1.633%	<div></div>

Deep Data Analytics

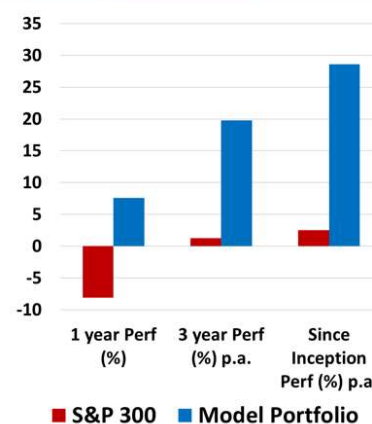
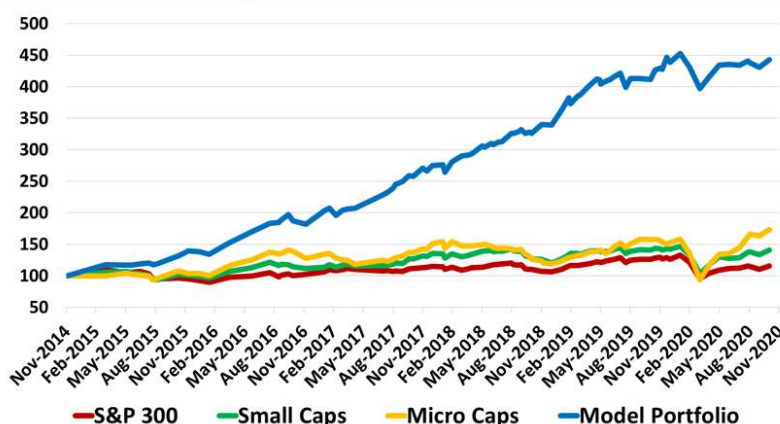
S&P 100 Best 10 with Cash



Small Cap Best 10 with Cash



GARY Best 10 with Cash



For more information visit... www.deepdataanalytics.com.au

Or email... info@deepdataanalytics.com.au

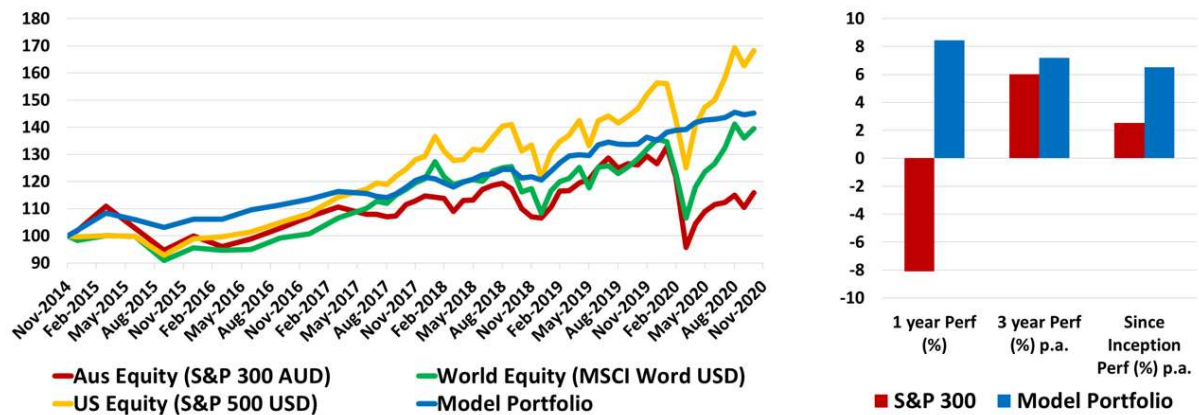
TODAY'S TOP 30 WINNERS AND LOSERS IN S&P 300

Code	Company Name	Market Cap (\$m)	Price (\$)	Daily Price Change (%)	Consensus Target Price (\$)	Consensus Rating	2020 PE	2021 PE	2020 EPS GROWTH	2021 EPS GROWTH	2020 Div Yield	2021 Div Yield	Newsflash
TAH	TABCORP Holdings Ltd	7848.67	4.10	15.82	3.66	HOLD	30.45	28.09	-31.81	8.42	2.90	2.02	Response to media article
NWS	News Corp.	886.99	21.63	13.66	25.00	BUY	87.25	59.64	-59.05	46.29	1.18	1.29	FY2021 First Quarter Earnings Release
BGL	Bellevue Gold Ltd	1033.07	1.36	10.16	1.48	STRONG BUY	-93.45	-169.38	-31.82	44.83	0.00	0.00	Inaugural Sustainability Report 2020
TWE	Treasury Wine Estate	5741.88	8.75	9.92	11.70	BUY	19.92	18.37	-28.27	8.46	3.10	3.47	N/A
GMA	Genworth Mortgage	726.02	1.93	9.66	2.37	HOLD	-23.68	13.54	-129.64	274.85	0.65	3.76	N/A
OFX	OFX Group Ltd	297.52	1.33	9.02	-	-	22.17	N/A	-23.57	N/A	3.76	N/A	OFX: Strategic Alliance with WiseTech Global
RSG	Resolute Mining	861.04	0.85	8.97	1.45	BUY	11.49	4.95	15.40	132.12	1.93	2.24	N/A
RMS	Ramellus Resources	1666.17	2.23	8.25	2.40	BUY	17.50	9.42	206.99	85.77	0.45	1.57	N/A
DEG	De Grey Mining	1444.61	1.22	7.96	1.06	STRONG BUY	N/A	N/A	N/A	N/A	0.00	0.00	N/A
SLR	Silver Lake Resource	1832.91	2.24	7.69	2.64	BUY	14.69	10.03	207.03	46.49	0.00	0.00	N/A
SBM	St Barbara Limited	1869.20	2.85	7.55	4.05	BUY	12.82	8.91	-19.77	43.93	2.99	2.48	N/A
NST	Northern Star	11447.87	16.56	7.18	16.23	HOLD	33.06	18.70	72.00	76.75	0.90	1.35	N/A
SAR	Saracen Mineral	6413.22	6.20	7.08	6.20	HOLD	28.13	18.64	82.89	50.91	0.21	0.96	N/A
GOR	Gold Road Res Ltd	1187.90	1.45	7.04	2.00	BUY	15.52	12.10	11120.48	28.19	0.79	2.17	N/A
SSR	SSR Mining Inc.	424.86	28.03	6.94	-	-	N/A	N/A	N/A	N/A	N/A	N/A	Appendix 4A
UWL	Uniti Group Ltd	648.36	1.39	6.92	1.82	STRONG BUY	28.23	22.98	354.73	22.87	0.00	0.00	UWL: OptiComm Shareholders approve acquisition by Uniti
WGX	Westgold Resources.	1096.03	2.78	6.92	3.20	STRONG BUY	28.27	9.94	495.94	184.42	0.00	0.24	N/A
EVN	Evolution Mining Ltd	10012.47	6.25	6.66	5.50	HOLD	28.34	20.93	67.27	35.39	1.97	2.38	Ceasing to be a substantial holder for RGL
SM1	Synlait Milk Ltd	859.16	5.10	6.47	5.98	HOLD	12.30	12.63	-13.30	-2.65	0.00	0.00	Synlait settles Pokeno land covenant legal dispute
SIQ	Smartgrp Corporation	713.25	5.71	6.33	6.93	HOLD	12.12	11.13	-24.20	8.92	5.82	6.26	N/A
APE	Eagers Automotive	3057.50	12.65	6.30	12.75	BUY	33.59	23.85	-5.39	40.84	0.84	2.67	N/A
IMD	Imdex Limited	489.62	1.31	6.07	1.60	BUY	21.54	28.90	-16.29	-25.48	2.37	1.36	N/A
PRU	Perseus Mining Ltd	1532.16	1.32	5.60	1.65	BUY	24.83	17.05	1376.94	45.57	0.00	0.15	N/A
RED	Red 5 Limited	551.76	0.30	5.36	0.50	BUY	42.14	-73.75	-41.67	-157.14	0.00	0.00	Red 5 investor webinar
MND	Monadelphous Group	905.15	10.06	5.23	11.00	BUY	25.98	17.40	-41.75	49.33	2.84	4.17	N/A
AMI	Aurelia Metals Ltd	423.88	0.51	5.15	0.79	STRONG BUY	10.48	7.02	-9.87	49.31	0.98	3.14	N/A
ORE	Orocobre Limited	877.31	2.68	5.10	2.85	HOLD	-22.81	-27.77	-150.33	17.87	0.00	0.00	N/A
VOC	Vocus Group Ltd	2348.19	3.97	5.03	3.40	HOLD	23.35	23.19	4.41	0.69	0.00	0.00	N/A
ALK	Alkane Resources Ltd	785.91	1.39	4.92	1.05	BUY	55.42	34.63	-37.46	60.06	0.00	0.00	N/A
RRL	Regis Resources	2097.12	4.30	4.88	5.71	HOLD	10.25	8.07	22.23	26.95	4.03	4.17	N/A

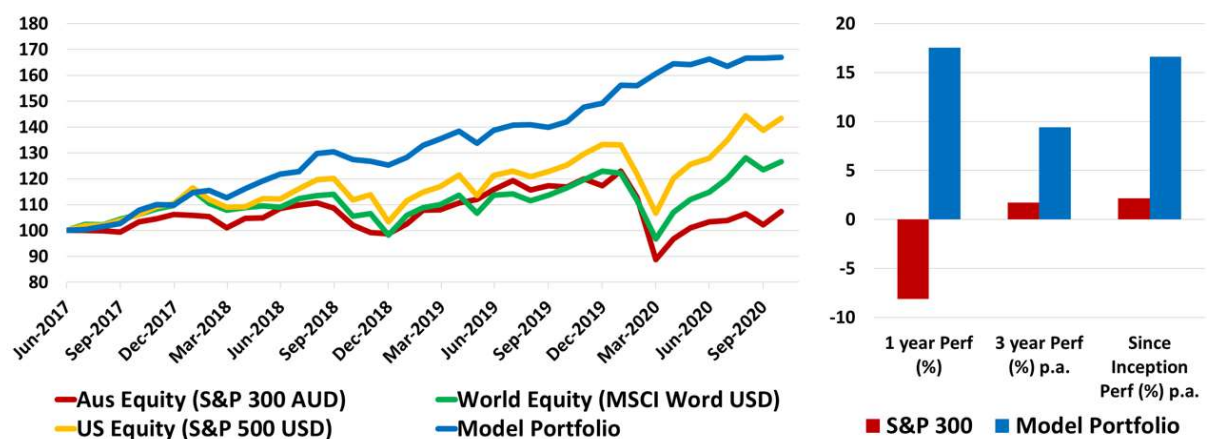
Code	Company Name	Market Cap (\$m)	Price (\$)	Daily Price Change (%)	Consensus Target Price (\$)	Consensus Rating	2020 PE	2021 PE	2020 EPS GROWTH	2021 EPS GROWTH	2020 Div Yield	2021 Div Yield	Newsflash
MID	MACA Limited	235.85	0.84	-4.55	1.31	STRONG BUY	7.57	6.16	48.00	22.82	5.65	5.95	N/A
HUB	HUB24 Ltd	1469.79	21.55	-3.75	23.20	BUY	100.29	75.15	38.51	33.45	0.36	0.50	N/A
RDC	Redcape Hotel Group	588.09	1.03	-3.29	1.09	STRONG BUY	24.52	13.55	-46.15	80.95	4.56	6.75	N/A
NEC	Nine Entertainment	4024.73	2.29	-2.97	2.10	BUY	26.15	25.60	-36.02	2.15	3.05	2.80	N/A
CSR	CSR Limited	2295.86	4.59	-2.96	4.70	HOLD	19.53	15.24	-35.95	28.17	4.34	4.29	QUOTED: Ex Dividend
APT	Afterpay Limited	29371.27	100.50	-2.66	105.65	BUY	-1159.30	1051.04	-120.64	210.30	0.00	0.00	N/A
CMW	Cromwell Prop	2486.60	0.93	-2.63	1.01	HOLD	11.92	13.26	0.96	-10.13	8.51	8.51	N/A
GWA	GWA Group Ltd	731.82	2.70	-2.53	2.73	HOLD	14.72	17.70	-8.14	-16.84	4.97	3.95	N/A
KAR	Karoon Energy Ltd	442.78	0.78	-2.50	1.38	BUY	-5.40	-57.78	-32.62	90.66	0.00	0.00	N/A
AUB	AUB Group Ltd	1306.10	17.13	-2.45	17.00	BUY	24.87	21.86	7.70	13.79	2.70	3.01	N/A
ZIP	Zip Co Ltd.	3237.78	6.09	-2.40	8.24	HOLD	-60.52	-59.06	-262.63	-2.46	0.00	0.00	N/A
BVS	Bravura Solution Ltd	741.50	2.93	-2.33	4.50	HOLD	18.05	17.98	9.68	0.41	3.77	3.80	N/A
HSN	Hansen Technologies	777.32	3.82	-2.30	4.20	BUY	19.20	15.55	17.06	23.45	1.61	2.63	AGM Resolution Correction
GDI	GDI Property Grp	601.65	1.09	-2.25	1.48	STRONG BUY	N/A	20.09	N/A	N/A	N/A	7.19	N/A
IRI	Integrated Research	628.44	3.57	-2.19	4.25	STRONG BUY	25.50	23.33	11.11	9.29	2.24	2.24	N/A
VUK	Virgin Money Uk PLC	1733.37	1.79	-2.19	1.90	HOLD	16.19	9.35	-76.74	73.12	0.00	0.82	N/A
PNV	Polynovo Limited	1844.44	2.73	-2.15	2.45	BUY	-654.68	546.00	10.71	219.90	0.00	0.00	N/A
SLK	Sealink Travel Grp	1441.43	6.46	-2.12	6.28	BUY	37.46	24.24	-27.44	54.56	1.66	2.06	N/A
AD8	Audinate Group Ltd	560.34	7.21	-2.04	7.50	BUY	-742.53	-177.59	-331.19	-318.13	0.00	0.00	N/A
CVN	Camarvon Petroleum	391.34	0.25	-2.00	0.36	BUY	-81.67	-57.65	52.61	-41.67	0.00	0.00	N/A
AX1	Accent Group Ltd	921.17	1.67	-1.76	1.85	BUY	15.68	15.08	8.31	3.99	3.61	5.40	N/A
PMV	Premier Investments	3609.39	22.32	-1.76	20.50	HOLD	26.26	23.75	5.48	10.56	2.34	3.22	N/A
IFM	Infomedia Ltd	639.75	1.68	-1.76	2.00	BUY	30.92	30.36	6.74	1.85	2.47	2.42	N/A
OBL	Omni Bridgeway Ltd	868.89	3.36	-1.75	5.45	BUY	-149.33	6.65	40.94	2346.67	1.79	2.08	N/A
CDA	Codan Limited	2211.20	12.05	-1.63	10.50	BUY	34.45	27.97	41.79	23.17	1.50	1.90	N/A
IAP	Investec Aust Prop	751.90	1.21	-1.63	1.70	-	13.91	12.60	N/A	10.34	7.40	7.27	N/A
NGI	Navigator Global Ltd	250.52	1.52	-1.62	2.24	STRONG BUY	6.32	10.32	-14.29	-38.73	14.18	9.01	Ceasing to be a substantial holder
MSB	Mesoblast Limited	1906.41	3.20	-1.54	3.60	HOLD	-17.81	-19.19	50.74	7.18	0.00	0.00	N/A
SHV	Select Harvests	700.36	5.76	-1.54	7.43	BUY	22.82	18.48	-49.17	23.46	2.46	3.23	N/A
ALQ	ALS Ltd	4708.48	9.61	-1.54	9.54	BUY	24.70	27.47	7.22	-10.06	1.74	1.70	N/A

Deep Data Analytics

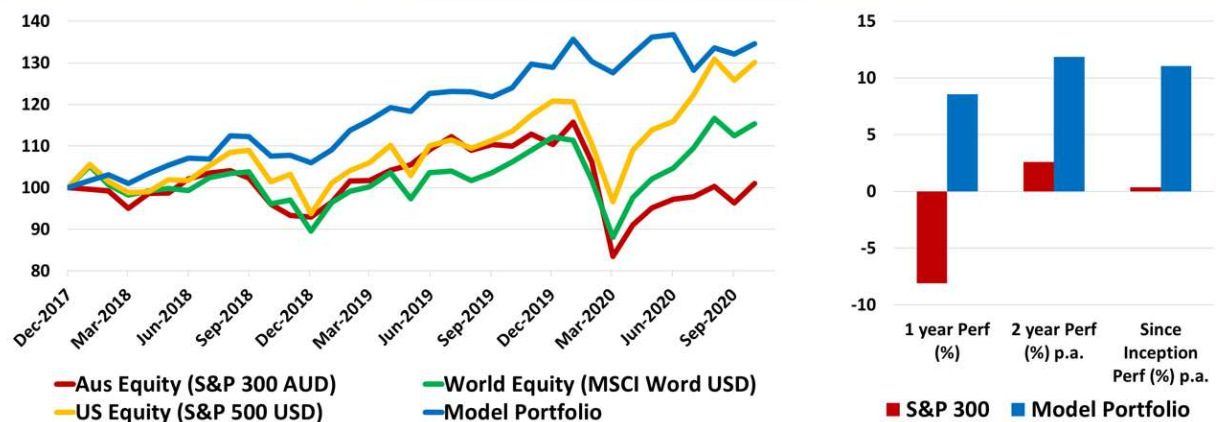
Multi Asset ETF Model



Global Tech/Health ETF Model



ESG ETF Model



For more information visit... www.deepdataanalytics.com.au

Or email... info@deepdataanalytics.com.au

CHECKING S&P 300 BY THE SECTOR

➤ Energy stocks:

Code	Company Name	Market Cap (\$m)	Price (\$)	Daily Price Change (%)	Consensus Target Price (\$)	Consensus Rating	2020 PE	2021 PE	2020 EPS GROWTH	2021 EPS GROWTH	2020 Div Yield	2021 Div Yield	Newsflash
ALD	Ampol Limited	6317.59	25.66	1.42	26.73	HOLD	32.61	17.71	-39.99	84.10	1.69	3.29	N/A
BPT	Beach Energy Limited	2794.63	1.24	0.82	1.80	BUY	6.35	8.09	-21.78	-21.56	1.57	1.59	ROG:Purchase of Killanoola Oilfield from Beach&Capital Raise
COE	Cooper Energy Ltd	504.26	0.31	0.00	0.46	BUY	-83.56	127.05	-192.75	165.77	0.00	0.00	N/A
CVN	Camarvon Petroleum	391.34	0.25	-2.00	0.36	BUY	-81.67	-57.65	52.61	-41.67	0.00	0.00	N/A
FAR	FAR Ltd	109.77	0.01	0.00	0.03	BUY	-16.42	-11.00	33.00	-49.25	0.00	0.00	N/A
KAR	Karoon Energy Ltd	442.78	0.78	-2.50	1.38	BUY	-5.40	-57.78	-32.62	90.66	0.00	0.00	N/A
NHC	New Hope Corporation	882.30	1.07	0.94	1.40	HOLD	6.63	136.65	-63.03	-95.15	7.73	1.00	N/A
ORG	Origin Energy	7414.70	4.28	1.66	6.08	BUY	7.31	18.77	0.31	-61.04	6.56	4.76	N/A
OSH	Oil Search Ltd	5776.42	2.81	1.08	3.65	BUY	162.28	23.79	-94.57	582.22	0.07	1.28	N/A
SOL	Soul Pattinson (W.H)	6130.91	26.07	1.80	24.16	BUY	30.20	35.47	-42.83	-14.86	2.16	2.22	N/A
STO	Santos Ltd	10311.18	4.88	-1.41	6.30	BUY	23.56	14.62	-61.07	61.21	1.37	1.70	N/A
SKY	Senex Energy Limited	459.92	0.32	1.59	0.43	BUY	53.33	25.34	7.91	110.50	0.00	0.00	N/A
VEA	Viva Energy Group	2851.68	1.77	0.57	2.44	BUY	-173.72	19.96	-111.62	970.47	3.63	3.73	Daily share buy-back notice - Appendix 3E
WHC	Whitehaven Coal	1084.28	1.09	3.81	1.86	BUY	39.59	-15.76	-94.87	-351.25	1.35	0.00	N/A
WOR	Worley Limited	4964.90	9.54	0.32	11.70	BUY	12.75	14.02	25.61	-9.02	3.97	4.61	N/A
WPL	Woodside Petroleum	17637.60	18.19	-0.76	23.95	BUY	26.00	18.79	-59.79	38.35	3.10	4.19	N/A

➤ Material (Ex Mining) stocks:

Code	Company Name	Market Cap (\$m)	Price (\$)	Daily Price Change (%)	Consensus Target Price (\$)	Consensus Rating	2020 PE	2021 PE	2020 EPS GROWTH	2021 EPS GROWTH	2020 Div Yield	2021 Div Yield	Newsflash
ABC	Adbri Limited	2028.55	3.21	3.22	2.50	HOLD	20.71	21.47	-17.16	-3.52	3.01	2.95	N/A
AMC	Amcor PLC	13804.56	16.07	4.08	16.60	BUY	17.49	16.19	2.04	8.05	4.46	4.27	Amcor Unveils US\$150M Share Buyback, Raises Earnings View
BKW	Brickworks Limited	2747.94	18.52	1.20	20.20	BUY	17.28	28.32	-35.27	-38.99	3.13	3.23	N/A
BLD	Boral Limited	6054.73	4.96	0.40	4.66	HOLD	29.33	28.04	-57.97	4.61	2.02	0.83	N/A
CSR	CSR Limited	2295.86	4.59	-2.96	4.70	HOLD	19.53	15.24	-35.95	28.17	4.34	4.29	QUOTED: Ex Dividend
FBU	Fletcher Building	3354.72	4.19	2.95	4.11	BUY	68.55	19.69	-85.07	248.22	0.65	2.58	N/A
IPL	Inditec Pivot	4000.98	2.08	0.97	2.40	BUY	18.30	15.21	31.06	20.30	1.45	3.13	N/A
JHX	James Hardie Indust	16532.21	37.00	-0.64	40.00	BUY	30.68	28.21	21.15	8.77	0.74	0.14	2020 AGM Results Announcement
NUF	Nufarm Limited	1321.34	3.53	1.44	4.80	BUY	-39.93	32.74	-137.02	221.98	0.19	0.81	N/A
ORA	Orora Limited	2568.61	2.67	-0.37	2.69	HOLD	16.03	17.28	-26.79	-7.21	22.88	4.36	Daily share buy-back notice - Appendix 3E
ORI	Orica Limited	6283.00	15.70	1.42	19.00	BUY	19.30	16.86	-14.86	14.51	2.46	3.25	N/A
PGH	Pact Group Hldgs Ltd	818.70	2.46	3.36	2.78	HOLD	13.20	11.99	-16.68	10.07	0.00	2.95	N/A

➤ Gold stocks:

Code	Company Name	Market Cap (\$m)	Price (\$)	Daily Price Change (%)	Consensus Target Price (\$)	Consensus Rating	2020 PE	2021 PE	2020 EPS GROWTH	2021 EPS GROWTH	2020 Div Yield	2021 Div Yield	Newsflash
ALK	Alkane Resources Ltd	785.91	1.39	4.92	1.05	BUY	55.42	34.63	-37.46	60.06	0.00	0.00	N/A
BGL	Bellevue Gold Ltd	1033.07	1.36	10.16	1.48	STRONG BUY	-93.45	-169.38	-31.82	44.83	0.00	0.00	Inaugural Sustainability Report 2020
DCN	Dacian Gold Ltd	205.91	0.38	2.70	0.44	HOLD	-3.96	6.20	-526.22	163.80	0.00	0.00	N/A
DEG	De Grey Mining	1444.61	1.22	7.96	1.06	STRONG BUY	N/A	N/A	N/A	N/A	0.00	0.00	N/A
EVN	Evolution Mining Ltd	10012.47	6.25	6.66	5.50	HOLD	28.34	20.93	67.27	35.39	1.97	2.38	Ceasing to be a substantial holder for RGL
GOR	Gold Road Res Ltd	1187.90	1.45	7.04	2.00	BUY	15.52	12.10	11120.48	28.19	0.79	2.17	N/A
NCM	Newcrest Mining	24227.23	30.72	3.54	34.75	HOLD	25.30	15.03	8.49	68.36	0.86	1.22	N/A
NST	Northern Star	11447.87	16.56	7.18	16.23	HOLD	33.06	18.70	72.00	76.75	0.90	1.35	N/A
PRU	Perseus Mining Ltd	1532.16	1.32	5.60	1.65	BUY	24.83	17.05	1376.94	45.57	0.00	0.15	N/A
RED	Red 5 Limited	551.76	0.30	5.36	0.50	BUY	42.14	-73.75	-41.67	-157.14	0.00	0.00	Red 5 investor webinar
RMS	Ramelius Resources	1666.17	2.23	8.25	2.40	BUY	17.50	9.42	206.99	85.77	0.45	1.57	N/A
RRL	Regis Resources	2097.12	4.30	4.88	5.71	HOLD	10.25	8.07	22.23	26.95	4.03	4.17	N/A
RSG	Resolute Mining	861.04	0.85	8.97	1.45	BUY	11.49	4.95	15.40	132.12	1.93	2.24	N/A
SAR	Saracen Mineral	6413.22	6.20	7.08	6.20	HOLD	28.13	18.64	82.89	50.91	0.21	0.96	N/A
SBM	St Barbara Limited	1869.20	2.85	7.55	4.05	BUY	12.82	8.91	-19.77	43.93	2.99	2.48	N/A
SLR	Silver Lake Resource	1832.91	2.24	7.69	2.64	BUY	14.69	10.03	207.03	46.49	0.00	0.00	N/A
SSR	SSR Mining Inc.	424.86	28.03	6.94	-	-	N/A	N/A	N/A	N/A	N/A	N/A	Appendix 4A
WAF	West African Res Ltd	894.14	1.06	3.92	1.30	BUY	6.53	2.81	2264.40	132.66	0.00	0.00	WAF Completes US\$25m Early Debt Repayment
WGX	Westgold Resources.	1096.03	2.78	6.92	3.20	STRONG BUY	28.27	9.94	495.94	184.42	0.00	0.24	N/A

➤ Mining (Ex Gold) stocks:

Code	Company Name	Market Cap (\$m)	Price (\$)	Daily Price Change (%)	Consensus Target Price (\$)	Consensus Rating	2020 PE	2021 PE	2020 EPS GROWTH	2021 EPS GROWTH	2020 Div Yield	2021 Div Yield	Newsflash
AMI	Aurelia Metals Ltd	423.88	0.51	5.15	0.79	STRONG BUY	10.48	7.02	-9.87	49.31	0.98	3.14	N/A
AWC	Alumina Limited	4178.42	1.47	1.74	2.00	BUY	18.72	17.07	-54.11	9.62	4.85	5.24	N/A
BHP	BHP Group Limited	100865.95	34.67	1.26	40.00	BUY	13.77	11.32	-10.20	21.69	4.91	5.93	N/A
BSL	BlueScope Steel Ltd	7476.13	15.23	2.63	16.48	BUY	21.78	16.71	-60.76	30.31	0.80	1.06	N/A
CIA	Champion Iron Ltd	1807.40	3.83	0.26	3.95	BUY	11.86	5.51	-16.87	115.12	0.00	0.00	N/A
CMM	Capricorn Metals	631.19	1.85	0.82	1.70	HOLD	-86.05	59.68	N/A	244.19	0.00	0.00	Change of Directors Interest Notice
DRR	Detera Royalties	2245.96	4.32	1.65	3.40	STRONG SELL	52.68	24.00	N/A	119.51	1.90	4.17	N/A
FMG	Fortescue Metals Grp	51203.19	16.55	-0.48	16.25	HOLD	7.71	6.52	54.22	18.13	10.13	11.02	N/A
GXY	Galaxy Resources	569.18	1.45	4.32	1.30	HOLD	-27.17	-43.52	35.47	37.57	0.00	0.00	N/A
IGO	IGO Limited	2670.40	4.65	2.88	5.30	HOLD	17.37	20.10	99.92	-13.60	2.28	2.47	N/A
ILU	Iluka Resources	2113.85	5.14	2.80	5.85	BUY	12.31	9.33	-37.76	32.02	0.51	4.84	N/A
IMD	Imdex Limited	489.62	1.31	6.07	1.60	BUY	21.54	28.90	-16.29	-25.48	2.37	1.36	N/A
INR	Ioneer Ltd	319.61	0.20	2.63	0.50	-	-0.62	-0.27	N/A	-131.33	N/A	0.00	Results of Meeting - 2020 AGM
JMS	Jupiter Mines.	509.34	0.27	3.85	0.40	BUY	5.40	15.88	N/A	-66.00	23.15	7.90	N/A
LYC	Lynas Corporation	2667.19	3.07	3.72	3.35	BUY	-471.58	57.92	-113.75	914.13	0.00	0.00	AGM Webcast Details
MAH	Macmahon Holdings	506.42	0.24	2.13	0.37	STRONG BUY	8.57	7.62	-91.04	12.50	2.08	3.05	N/A
MGX	Mount Gibson Iron	794.56	0.68	0.75	0.97	STRONG BUY	7.38	6.59	15.82	12.02	4.44	5.19	N/A
MIN	Mineral Resources.	4754.54	26.33	4.44	26.00	HOLD	13.95	8.40	95.65	65.94	3.01	4.99	N/A
MID	MACA Limited	235.85	0.84	-4.55	1.31	STRONG BUY	7.57	6.16	48.00	22.82	5.65	5.95	N/A
NIC	Nickel Mines Limited	1808.88	0.85	0.00	1.33	BUY	12.18	8.23	N/A	47.98	2.61	4.69	N/A
ORE	Orocobre Limited	877.31	2.68	5.10	2.85	HOLD	-22.81	-27.77	-150.33	17.87	0.00	0.00	N/A
OZL	OZ Minerals	4926.33	15.07	1.34	15.70	BUY	25.74	14.57	11.29	76.72	1.42	1.59	N/A
PLS	Pilbara Min Ltd	946.52	0.44	3.53	0.36	HOLD	-13.75	-38.26	-93.94	64.06	0.00	0.00	N/A
PRN	Perenti Global Ltd	734.47	1.09	4.31	1.68	BUY	7.07	6.84	-2.71	3.37	6.01	6.31	Change of Directors Interest Notice
RIO	Rio Tinto Limited	34133.33	93.40	1.58	103.75	BUY	9.87	10.06	-0.48	-1.93	6.69	6.67	N/A
S32	South32 Limited	10060.85	2.13	2.40	2.73	BUY	39.64	16.56	-81.90	139.31	1.89	2.44	Daily share buy-back notice - Appendix 3E
SFR	Sandfire Resources	755.79	4.31	1.65	5.35	BUY	8.81	6.58	-27.98	33.82	3.29	3.84	N/A
SGM	Sims Limited	1896.87	9.59	1.80	9.50	HOLD	-33.31	49.55	-136.83	167.23	0.97	0.82	N/A
WSA	Western Areas Ltd	533.63	1.98	1.80	2.35	BUY	12.16	36.17	188.76	-66.39	1.22	0.78	Change of Directors Interest Notice

➤ Industrial stocks:

Code	Company Name	Market Cap (\$m)	Price (\$)	Daily Price Change (%)	Consensus Target Price (\$)	Consensus Rating	2020 PE	2021 PE	2020 EPS GROWTH	2021 EPS GROWTH	2020 Div Yield	2021 Div Yield	Newsflash
AIA	Auckland Internation	9866.09	6.69	-0.15	6.73	HOLD	64.47	-1840.95	-52.52	-103.50	0.39	0.00	N/A
ALQ	ALS Ltd	4708.48	9.61	-1.54	9.54	BUY	24.70	27.47	7.22	-10.06	1.74	1.70	N/A
ALX	Atlas Arteria	5782.88	6.05	0.33	6.91	BUY	53.06	17.12	-63.06	209.96	2.32	5.37	N/A
AMA	AMA Group Limited	587.12	0.81	1.25	0.80	BUY	115.71	38.94	-87.15	197.14	0.10	0.00	N/A
ASB	Austal Limited	985.19	2.78	1.46	4.29	BUY	11.64	11.53	49.48	1.01	2.52	3.13	N/A
AZJ	Aurizon Holdings Ltd	7096.95	3.84	2.13	5.40	BUY	14.24	14.72	20.99	-3.22	7.02	6.82	On-Market Buy-back Appendix 3E
BIN	Bingo Industries Ltd	1667.89	2.67	4.71	2.56	BUY	33.84	43.15	-6.08	-21.56	1.16	0.96	N/A
BXB	Brambles Limited	15300.47	10.42	1.96	12.25	BUY	22.21	20.55	-17.65	8.04	4.00	3.00	Daily share buy-back notice - Appendix 3E
CIM	Cimic Group Ltd	6871.10	21.75	0.05	29.30	BUY	10.60	10.60	-16.75	0.06	3.20	5.85	Daily share buy-back notice - Appendix 3E
CWY	Cleanaway Waste Ltd	4506.70	2.24	2.28	2.45	BUY	32.36	28.83	-1.68	12.25	1.71	1.94	N/A
DOW	Downer EDI Limited	3218.93	4.68	1.96	5.29	BUY	16.80	12.74	-43.40	31.82	3.14	3.24	N/A
EHL	Emeco Holdings	418.92	0.78	0.65	1.19	BUY	3.82	5.89	10.52	-35.17	0.00	0.00	N/A
EOS	Electro Optic Sys.	864.57	5.75	-0.52	7.67	STRONG BUY	31.77	24.01	-6.70	32.32	0.00	0.00	N/A
GWA	GWA Group Ltd	731.82	2.70	-2.53	2.73	HOLD	14.72	17.70	-8.14	-16.84	4.97	3.95	N/A
IPH	IPH Limited	1440.13	6.82	2.40	8.78	BUY	18.75	18.63	20.76	0.64	4.20	4.30	N/A
MMS	McMillan Shakespeare	745.95	9.90	2.70	9.90	HOLD	11.29	10.99	-16.28	2.75	5.84	5.70	N/A
MND	Monadelphous Group	905.15	10.06	5.23	11.00	BUY	25.98	17.40	-41.75	49.33	2.84	4.17	N/A
NWH	NRW Holdings Limited	985.64	2.30	-0.43	2.76	STRONG BUY	11.05	9.91	64.99	11.53	2.00	3.02	N/A
PET	Phoslock Env Tec Ltd	153.13	0.25	0.00	-	-	N/A	N/A	N/A	N/A	N/A	N/A	N/A
QAN	Qantas Airways	8600.36	4.55	-0.22	4.93	BUY	-88.78	-10.88	-108.78	-715.96	1.00	0.00	N/A
QUB	Qube Holdings Ltd	5382.64	2.87	1.41	3.08	BUY	44.53	47.99	-16.03	-7.21	1.73	1.62	N/A
RWC	Reliance Worldwide	3476.42	4.56	3.64	4.33	HOLD	28.70	23.00	-17.70	24.76	1.71	2.06	N/A
SIQ	Smartgrp Corporation	713.25	5.71	6.33	6.93	HOLD	12.12	11.13	-24.20	8.92	5.82	6.26	N/A
SSM	Service Stream	868.69	2.16	1.89	2.55	STRONG BUY	15.16	15.50	1.06	-2.22	4.23	4.38	N/A
SVW	Seven Group Holdings	6882.17	20.32	0.20	21.35	BUY	15.87	15.66	-6.33	1.32	2.00	2.23	N/A
SYD	SYD Airport	16003.29	5.93	0.00	6.14	HOLD	-65.01	958.00	-154.87	106.79	0.00	2.00	N/A
TCL	Transurban Group	38174.61	14.14	1.36	14.11	HOLD	400.23	#####	-75.50	-101.81	3.31	2.81	N/A

➤ Consumer stocks:

Code	Company Name	Market Cap (\$m)	Price (\$)	Daily Price Change (%)	Consensus Target Price (\$)	Consensus Rating	2020 PE	2021 PE	2020 EPS GROWTH	2021 EPS GROWTH	2020 Div Yield	2021 Div Yield	Newsflash
ALG	Ardentleisuregrpltd	347.79	0.73	0.00	0.70	BUY	-6.89	-5.31	-406.01	-29.69	0.00	0.00	N/A
ALL	Aristocrat Leisure	20375.94	31.67	-0.75	32.60	BUY	42.91	26.80	-44.35	60.14	0.14	1.40	N/A
APE	Eagers Automotive	3057.50	12.65	6.30	12.75	BUY	33.59	23.85	-5.39	40.84	0.84	2.67	N/A
ARB	ARB Corporation.	2627.75	32.08	-1.29	30.25	HOLD	53.06	33.37	-16.12	58.98	0.98	1.57	N/A
AX1	Accent Group Ltd	921.17	1.67	-1.76	1.85	BUY	15.68	15.08	8.31	3.99	3.61	5.40	N/A
BAP	Bapcor Limited	2715.30	8.00	0.00	8.65	BUY	28.22	24.08	-15.93	17.20	1.44	2.26	N/A
BBN	Baby Bunting Grp Ltd	579.06	4.48	0.00	5.39	BUY	30.27	23.27	30.40	30.07	2.16	2.96	N/A
BRG	Breville Group Ltd	3761.13	27.00	-0.26	27.46	HOLD	45.48	41.71	13.97	9.03	1.33	1.64	N/A
CCX	City Chic Collective	615.10	2.77	2.97	3.70	BUY	34.73	30.52	-2.15	13.79	0.00	0.67	N/A
CKF	Collins Foods Ltd	1171.64	9.97	-0.80	10.65	BUY	29.58	25.44	-14.03	16.27	1.29	2.08	N/A
CTD	Corp Travel Limited	2262.62	16.74	0.66	18.70	BUY	59.25	265.55	-69.19	-77.69	1.08	0.09	Appendix 3G - Issue of Share Appreciation Rights
CWN	Crown Resorts Ltd	5810.02	8.81	2.68	10.00	BUY	38.52	508.37	-57.89	-92.42	4.02	4.30	N/A
DMP	Domino Pizza Enterpr	7288.73	84.48	0.28	79.30	HOLD	49.18	42.02	3.16	17.04	1.35	1.68	N/A
FLT	Flight Centre Travel	2751.57	14.01	1.37	14.30	HOLD	-9.65	-13.82	-165.47	30.19	0.00	0.00	N/A
GEM	G8 Education Limited	987.21	1.17	0.43	1.38	BUY	13.89	21.44	-41.52	-35.22	0.00	3.07	N/A
GUD	G.U.D. Holdings	1109.17	12.65	-0.86	12.80	HOLD	21.63	19.08	-16.56	13.34	3.68	3.62	N/A
HVN	Harvey Norman	5731.63	4.64	0.87	5.05	BUY	13.65	11.47	9.97	19.03	4.49	6.46	N/A
IEL	Idp Education Ltd	5488.79	19.89	0.86	21.00	BUY	113.08	107.29	-34.68	5.40	0.99	0.56	N/A
IVC	InvoCare Limited	1527.04	10.67	0.66	10.75	HOLD	39.83	27.97	-45.06	42.39	2.53	2.97	N/A
JBH	JB Hi-Fi Limited	5607.46	48.75	-0.12	48.90	HOLD	17.23	15.61	34.77	10.37	3.58	4.21	N/A
JIN	Jumbo Interactive	728.78	11.67	0.00	13.89	BUY	29.52	24.83	-5.72	18.89	2.80	2.83	N/A
KGN	Kogan.Com Ltd	2335.10	22.70	2.76	22.00	BUY	77.00	47.23	59.93	63.03	0.98	1.54	N/A
KMD	Kathmandu Hold Ltd	786.99	1.11	0.00	1.25	BUY	17.73	14.61	-49.59	21.35	1.12	3.78	N/A
LOV	Lovisa Holdings Ltd	807.02	7.83	4.26	8.46	HOLD	19.15	38.54	18.57	-50.32	0.55	1.35	N/A
NCK	Nick Scall Limited	690.93	8.55	0.23	9.20	BUY	17.62	10.21	-5.88	72.53	5.24	7.23	N/A
PBH	Pointsbet Holdings	1959.87	11.38	0.53	12.80	BUY	-42.34	-35.98	N/A	-17.67	0.00	0.00	N/A
PMV	Premier Investments	3609.39	22.32	-1.76	20.50	HOLD	26.26	23.75	5.48	10.56	2.34	3.22	N/A
RDC	Redcape Hotel Group	588.09	1.03	-3.29	1.09	STRONG BUY	24.52	13.55	-46.15	80.95	4.56	6.75	N/A
SGR	The Star Ent Grp	3370.13	3.53	-0.28	3.90	BUY	33.75	33.47	-56.87	0.84	3.02	0.00	N/A
SKC	Skycity Ent Grp Ltd	2090.56	2.75	0.00	3.52	STRONG BUY	37.94	32.05	-68.66	18.37	3.37	1.76	N/A
SLK	Sealink Travel Grp	1441.43	6.46	-2.12	6.28	BUY	37.46	24.24	-27.44	54.56	1.66	2.06	N/A
SUL	Super Ret Rep Ltd	2594.52	11.48	-0.09	12.40	BUY	15.66	13.09	-3.11	19.63	1.52	4.72	N/A
TAH	TABCORP Holdings Ltd	7848.67	4.10	15.82	3.66	HOLD	30.45	28.09	-31.81	8.42	2.90	2.02	Response to media article
TPW	Temple & Webster Ltd	1361.12	11.72	3.72	12.60	BUY	167.43	60.91	577.64	174.86	0.00	0.00	N/A
WEB	Webjet Limited	1413.64	4.20	0.72	3.70	HOLD	89.59	-22.66	-89.74	-495.44	1.04	0.00	N/A
WES	Wesfarmers Limited	54072.84	47.72	0.06	48.70	HOLD	27.04	27.41	1.42	-1.34	3.12	3.25	N/A

➤ Staple stocks:

Code	Company Name	Market Cap (\$m)	Price (\$)	Daily Price Change (%)	Consensus Target Price (\$)	Consensus Rating	2020 PE	2021 PE	2020 EPS GROWTH	2021 EPS GROWTH	2020 Div Yield	2021 Div Yield	Newsflash
AZM	The A2 Milk Company	9965.57	13.71	2.16	16.35	HOLD	27.92	27.34	27.90	2.09	0.00	0.00	N/A
AAC	Australian Agricul.	675.10	1.12	-0.45	1.40	STRONG BUY	-35.97	-31.86	13.89	-12.90	0.00	0.00	N/A
AHY	Asaleo Care Limited	540.41	0.99	-1.01	1.24	BUY	14.03	13.38	27.17	4.84	2.34	4.95	N/A
BGA	Bega Cheese Ltd	1120.97	5.16	-0.96	5.70	HOLD	40.59	24.11	-31.16	68.33	1.69	2.30	N/A
BKL	Blackmores Limited	1352.41	71.25	1.93	67.00	HOLD	63.76	40.60	-67.91	57.02	0.00	1.59	N/A
BUB	Bubs Aust Ltd	401.37	0.67	1.53	0.68	SELL	-55.42	-117.28	N/A	52.75	0.00	0.00	N/A
BWX	BWX Limited	519.10	3.76	1.08	5.02	BUY	31.40	28.22	30.87	11.27	1.08	1.32	N/A
CCL	Coca-Cola Amatil	9122.40	12.58	-0.16	12.75	HOLD	29.16	24.30	-17.16	20.01	2.20	3.36	N/A
CGC	Costa Group Holdings	1479.06	3.68	-0.27	3.60	BUY	29.75	21.26	53.94	39.91	2.05	2.74	N/A
COL	Coles Group	24357.56	18.40	0.77	20.05	BUY	26.18	24.24	4.92	8.04	3.19	3.45	N/A
ELD	Elders Limited	1766.25	11.35	0.09	11.81	BUY	16.83	15.06	33.54	11.79	1.80	2.16	N/A
FNP	Freedom Food Ltd	834.10	3.01	0.00	3.27	HOLD	72.83	29.32	-46.74	148.42	0.00	0.85	N/A
GNC	GrainCorp Limited	869.65	3.92	3.16	4.75	BUY	-282.22	20.56	95.91	1472.71	0.10	2.72	Becoming a substantial holder
ING	Inghams Group	1230.26	3.28	-0.91	3.64	BUY	15.49	15.78	-24.90	-1.80	4.25	4.66	N/A
MTS	Metcash Limited	3138.65	3.08	0.33	3.45	BUY	13.75	14.95	-2.29	-8.00	3.95	4.05	N/A
SHV	Select Harvests	700.36	5.76	-1.54	7.43	BUY	22.82	18.48	-49.17	23.46	2.46	3.23	N/A
SM1	Synlait Milk Ltd	859.16	5.10	6.47	5.98	HOLD	12.30	12.63	-13.30	-2.65	0.00	0.00	Synlait settles Pokeno land covenant legal dispute
TGR	Tassal Group Limited	750.24	3.55	0.00	4.45	BUY	11.13	10.95	-0.78	1.65	5.16	5.14	N/A
TWE	Treasury Wine Estate	5741.88	8.75	9.92	11.70	BUY	19.92	18.37	-28.27	8.46	3.10	3.47	N/A
UMG	United Malt Group	1241.59	4.29	3.37	4.73	BUY	22.22	18.40	N/A	20.71	0.61	2.84	N/A
WOW	Woolworths Group Ltd	49538.90	38.96	-0.49	43.25	BUY	29.86	26.63	-1.31	12.13	2.45	2.74	N/A

➤ Healthcare stocks:

Code	Company Name	Market Cap (\$m)	Price (\$)	Daily Price Change (%)	Consensus Target Price (\$)	Consensus Rating	2020 PE	2021 PE	2020 EPS GROWTH	2021 EPS GROWTH	2020 Div Yield	2021 Div Yield	Newsflash
ANN	Ansell Limited	5357.02	41.70	0.05	41.74	HOLD	25.45	21.82	3.27	16.62	1.70	1.95	N/A
API	Australian Pharm.	546.85	1.12	0.45	1.08	HOLD	18.04	13.60	-42.65	32.69	0.90	4.98	N/A
AVH	Avita Therapeutics	461.26	5.94	-1.49	13.00	BUY	-13.40	-8.64	-23.15	-55.05	0.00	0.00	AVITA Therapeutics, Inc. Announces Executive Change
COH	Cochlear Limited	14758.29	224.35	-0.07	204.00	HOLD	85.31	65.80	-43.41	29.65	0.72	0.55	N/A
CSL	CSL Limited	137232.43	301.99	0.12	315.85	BUY	46.71	43.16	3.38	8.24	0.96	1.04	N/A
CUV	Clinuvel Pharmaceut.	1010.44	20.32	-0.64	28.89	STRONG BUY	N/A	77.71	N/A	N/A	N/A	0.09	N/A
EHE	Estia Health Ltd	338.38	1.30	0.00	1.57	HOLD	12.60	19.09	-36.70	-34.02	6.29	4.47	N/A
FPH	Fisher & Paykel H.	19787.70	33.83	-1.49	36.00	BUY	75.12	55.29	30.39	35.85	0.81	1.00	N/A
HLS	Healius	2217.91	3.60	1.12	3.78	HOLD	34.26	18.88	-33.18	81.42	1.25	2.09	N/A
IDX	Integral Diagnostics	865.66	4.33	-0.69	4.60	BUY	28.53	23.62	-8.82	20.79	2.26	2.60	N/A
MSB	Mesoblast Limited	1906.41	3.20	-1.54	3.60	HOLD	-17.81	-19.19	50.74	7.18	0.00	0.00	N/A
MVF	Monash IVF Group Ltd	241.57	0.63	0.81	0.70	BUY	13.38	13.21	-44.41	1.31	2.06	4.80	N/A
MVP	Medical Developments	370.77	5.67	0.35	7.50	BUY	739.24	405.00	-43.89	82.53	0.65	0.35	N/A
MYX	Mayne Pharma Ltd	520.51	0.31	0.00	0.37	HOLD	-206.67	55.66	-108.51	471.33	0.00	0.00	N/A
NAN	Nanosonics Limited	1679.60	5.72	2.51	5.50	SELL	128.37	141.58	25.52	-9.34	0.00	0.00	N/A
OPT	Opthea Limited	752.99	2.22	-0.45	4.40	BUY	-15.14	36.39	-56.03	141.59	0.00	0.00	Change in substantial holding
PAR	Paradigm Bio.	664.02	3.00	2.04	2.54	HOLD	-39.74	-20.55	-98.68	-93.38	0.00	0.00	N/A
PME	Pro Medicus Limited	3553.61	33.94	-0.47	29.65	HOLD	146.93	119.57	34.41	22.88	0.35	0.42	N/A
PNV	Polynovo Limited	1844.44	2.73	-2.15	2.45	BUY	-654.68	546.00	10.71	219.90	0.00	0.00	N/A
RHC	Ramsay Health Care	14659.87	64.38	0.52	66.50	HOLD	37.86	32.36	-40.63	16.98	1.01	1.40	N/A
RMD	ResMed Inc.	10581.07	29.18	-1.08	27.13	HOLD	46.15	41.56	25.10	11.04	0.78	0.80	N/A
SHL	Sonic Healthcare	17274.52	35.90	-0.72	35.84	BUY	33.05	21.76	-6.40	51.94	2.10	3.08	N/A
SIG	Sigma Health Ltd	556.16	0.55	3.81	0.69	BUY	43.01	15.44	-70.42	178.53	3.24	0.55	N/A
SPL	Starpharma Holdings	572.48	1.43	1.06	2.03	STRONG BUY	-39.58	-58.16	-9.09	31.94	0.00	0.00	N/A
VRT	Virtus Health Ltd	382.66	4.78	0.42	4.05	BUY	18.84	18.19	-27.98	3.55	2.72	3.35	N/A

➤ Bank stocks:

Code	Company Name	Market Cap (\$m)	Price (\$)	Daily Price Change (%)	Consensus Target Price (\$)	Consensus Rating	2020 PE	2021 PE	2020 EPS GROWTH	2021 EPS GROWTH	2020 Div Yield	2021 Div Yield	Newsflash
AFG	Aust Finance Grp	622.65	2.36	1.72	2.11	BUY	15.41	15.26	11.33	0.99	3.62	3.99	N/A
ANZ	ANZ Banking Grp Ltd	55302.01	19.60	0.67	21.00	BUY	15.08	12.16	-41.87	24.08	2.92	4.71	N/A
BEN	Bendigo and Adelaide	3667.50	6.91	-0.14	7.00	HOLD	11.97	13.01	-28.57	-8.00	5.30	3.94	N/A
BOQ	Bank of Queensland.	2862.31	6.40	1.59	6.91	HOLD	13.57	12.91	-40.13	5.15	1.44	4.08	N/A
CBA	Commonwealth Bank.	123601.30	69.79	0.17	71.00	HOLD	16.68	17.90	-14.18	-6.79	3.89	3.64	N/A
GMA	Genworth Mortgage	726.02	1.93	9.66	2.37	HOLD	-23.68	13.54	-129.64	274.85	0.65	3.76	N/A
MYS	MyState Limited	395.73	4.38	1.86	4.50	BUY	12.92	11.31	-0.59	14.26	5.69	6.03	N/A
NAB	National Aust. Bank	63531.70	19.57	1.35	20.89	BUY	15.28	13.66	-30.48	11.83	2.93	4.24	NOTICE UNDER SECTION 708A(5)(e)
VUK	Virgin Money Uk PLC	1733.37	1.79	-2.19	1.90	HOLD	16.19	9.35	-76.74	73.12	0.00	0.82	N/A
WBC	Westpac Banking Corp	63926.82	17.77	0.40	19.80	BUY	21.88	11.79	-59.02	85.65	1.54	4.67	N/A

➤ Diversified Financials / Insurance stocks:

Code	Company Name	Market Cap (\$m)	Price (\$)	Daily Price Change (%)	Consensus Target Price (\$)	Consensus Rating	2020 PE	2021 PE	2020 EPS GROWTH	2021 EPS GROWTH	2020 Div Yield	2021 Div Yield	Newsflash
AEF	Australian Ethical	491.13	4.46	2.06	-	-	N/A	N/A	N/A	N/A	N/A	N/A	N/A
AMP	AMP Limited	5739.12	1.70	1.80	1.45	HOLD	18.09	16.29	-46.31	10.99	6.01	3.28	AMP Limited announces new Board appointment
ASX	ASX Limited	15799.30	81.56	-0.06	73.00	SELL	31.42	32.74	1.34	-4.05	2.87	2.75	N/A
AUB	AUB Group Ltd	1306.10	17.13	-2.45	17.00	BUY	24.87	21.86	7.70	13.79	2.70	3.01	N/A
CCP	Credit Corp Group	1289.10	19.13	-0.10	22.03	BUY	14.29	18.71	-5.22	-23.62	2.78	2.68	N/A
CGF	Challenger Limited	3297.00	4.96	1.64	4.63	BUY	9.80	12.32	-11.37	-20.47	3.85	4.23	Becoming a substantial holder
CNI	Centuria Capital	1368.88	2.39	0.84	2.46	STRONG BUY	19.99	20.66	-5.77	-3.25	4.10	3.61	N/A
ECX	Eclixp Group Ltd	514.62	1.65	2.48	1.70	BUY	13.20	12.43	17.04	6.20	0.00	1.92	N/A
FXL	FlexiGroup Limited	477.93	0.98	1.04	1.36	HOLD	9.39	9.19	-47.24	2.18	4.99	2.72	N/A
HUB	HUB24 Ltd	1469.79	21.55	-3.75	23.20	BUY	100.29	75.15	38.51	33.45	0.36	0.50	N/A
IAG	Insurance Australia	11162.35	4.85	0.41	5.80	BUY	34.11	15.87	-64.46	114.98	2.15	4.49	N/A
IFL	IOOF Holdings Ltd	1980.44	3.14	2.95	4.79	BUY	9.45	12.46	-35.24	-24.13	8.33	5.18	N/A
JHG	Janus Henderson	1131.44	35.64	-1.36	40.05	BUY	9.70	9.50	-0.11	2.11	5.96	6.05	Daily share buy-back notice - Appendix 3E
MFG	Magellan Fin Grp Ltd	11044.02	60.00	-0.23	60.00	HOLD	25.11	24.48	18.82	2.55	3.61	3.74	Funds Under Management - October 2020
MNY	Money3 Corporation	453.95	2.50	2.04	2.86	BUY	17.67	13.49	-29.34	30.98	4.00	4.47	N/A
MPL	Medibank Private Ltd	7518.43	2.72	-0.37	2.82	BUY	21.18	19.89	-22.11	6.49	4.21	4.29	N/A
MQG	Macquarie Group Ltd	47881.16	135.45	2.27	130.93	BUY	16.54	22.27	-5.84	-25.72	3.95	2.69	Macquarie Group 1H21 Media Release
NGI	Navigator Global Ltd	250.52	1.52	-1.62	2.24	STRONG BUY	6.32	10.32	-14.29	-38.73	14.18	9.01	Ceasing to be a substantial holder
NHF	NIB Holdings Limited	1988.67	4.37	0.46	4.80	BUY	18.10	16.72	-31.17	8.23	3.89	3.63	N/A
NWL	Netwealth Group	4143.02	17.62	1.09	14.43	HOLD	98.74	83.03	21.64	18.93	0.80	0.94	N/A
OBL	Omni Bridgeway Ltd	868.89	3.36	-1.75	5.45	BUY	-149.33	6.65	40.94	2346.67	1.79	2.08	N/A
OFX	OFX Group Ltd	297.52	1.33	9.02	-	-	22.17	N/A	-23.57	N/A	3.76	N/A	OFX: Strategic Alliance with WiseTech Global
PDL	Pendal Group Ltd	1923.90	5.95	-0.17	7.01	BUY	12.37	13.07	-6.40	-5.40	6.49	6.62	N/A
PNI	Pinnacle Investment	943.65	5.19	2.98	6.11	BUY	30.09	27.68	6.81	8.70	2.79	3.07	N/A
PPT	Perpetual Limited	1564.17	27.67	-0.04	35.49	BUY	14.39	14.04	-25.03	2.51	6.21	5.25	N/A
PTM	Platinum Asset	1836.30	3.10	-0.96	3.20	SELL	12.31	14.36	-7.42	-14.27	7.96	6.76	N/A
QBE	QBE Insurance Group	12502.34	8.78	3.29	12.03	BUY	-20.65	12.24	-149.70	268.68	1.91	4.93	N/A
SDF	Steadfast Group Ltd	3204.68	3.72	0.81	4.00	BUY	24.10	21.64	12.01	11.34	2.36	2.87	N/A
SUN	Suncorp Group Ltd	10488.13	8.30	1.34	10.26	BUY	15.80	12.70	-37.70	24.44	4.43	5.47	Suncorp Natural Hazard Update
ZIP	Zip Co Ltd.	3237.78	6.09	-2.40	8.24	HOLD	-60.52	-59.06	-262.63	-2.46	0.00	0.00	N/A

➤ Property stocks:

Code	Company Name	Market Cap (\$m)	Price (\$)	Daily Price Change (%)	Consensus Target Price (\$)	Consensus Rating	2020 PE	2021 PE	2020 EPS GROWTH	2021 EPS GROWTH	2020 Div Yield	2021 Div Yield	Newsflash
ABP	Abacus Property Grp.	2017.09	3.09	1.98	3.08	BUY	16.56	17.02	-33.95	-2.68	5.92	5.70	N/A
ADI	Apn Industria REIT	537.27	2.74	0.74	2.73	BUY	13.91	14.60	7.65	-4.74	6.30	6.27	N/A
ARF	Arena REIT.	936.72	2.79	1.82	2.82	BUY	17.63	18.72	14.08	-5.87	5.02	5.13	N/A
AVN	Aventus Group	1435.77	2.50	-1.19	2.50	BUY	14.25	13.94	-2.56	2.24	4.77	5.62	N/A
BWP	BWP Trust	2691.59	4.19	0.00	3.23	SELL	23.38	23.25	-2.69	0.56	4.33	4.32	N/A
CHC	Charter Hall Group	6227.44	13.41	0.30	13.10	BUY	19.93	25.11	45.13	-20.65	2.67	2.83	N/A
CIP	Centuria I REIT	1605.96	3.17	0.63	3.23	HOLD	16.89	18.36	-43.38	-8.02	5.78	5.35	N/A
CLW	Chtr H Lwr	2618.16	5.12	0.99	5.47	BUY	17.67	17.36	6.94	1.79	5.47	5.70	N/A
CMW	Cromwell Prop	2486.60	0.93	-2.63	1.01	HOLD	11.92	13.26	0.96	-10.13	8.51	8.51	N/A
COF	Centuria Office REIT	1080.50	2.12	0.95	2.27	BUY	11.79	11.70	-14.55	0.83	8.38	7.83	N/A
CQE	Charter Hall Soc In	1065.70	3.01	2.03	3.20	BUY	17.55	19.42	-11.06	-9.62	5.32	4.95	N/A
CQR	Charter Hall Retail	2083.95	3.63	-0.55	3.55	HOLD	12.34	14.13	-5.13	-12.65	6.86	6.25	N/A
CWP	Cedar Woods Prop.	472.35	5.91	1.03	5.80	HOLD	21.41	15.47	-57.11	38.41	3.05	3.47	Cedar Woods 2020 AGM Broadcast
DXS	Dexus	9866.84	9.05	-0.11	9.74	HOLD	14.63	14.51	1.18	0.80	5.46	5.52	N/A
GDI	GDI Property Grp	601.65	1.09	-2.25	1.48	STRONG BUY	N/A	20.09	N/A	N/A	N/A	7.19	N/A
GMG	Goodman Group	36265.04	19.66	0.15	18.73	HOLD	34.19	31.74	12.11	7.72	1.53	1.52	N/A
GOZ	Growthpoint Property	2779.72	3.56	-1.11	3.56	BUY	15.25	14.76	1.19	3.30	6.15	5.67	N/A
GPT	GPT Group	8317.66	4.27	0.00	4.35	BUY	16.59	14.14	-20.14	17.29	4.50	5.45	N/A
HPI	Hotel Property	484.31	3.14	2.28	3.15	BUY	15.70	16.02	2.56	-2.00	6.37	6.18	N/A
IAP	Investec Aust Prop	751.90	1.21	-1.63	1.70	-	13.91	12.60	N/A	10.34	7.40	7.27	N/A
INA	Ingenia Group	1607.13	4.87	-1.02	5.33	STRONG BUY	23.08	22.81	10.24	1.18	2.26	2.09	N/A
LIC	Lifestyle Communit.	1106.09	10.57	-0.09	9.90	BUY	39.81	29.65	-30.86	34.27	0.57	0.54	N/A
LLC	Lendlease Group	8830.47	13.03	1.56	14.00	BUY	91.69	19.59	-82.17	368.14	2.51	2.36	N/A
MGR	Mirvac Group	9056.38	2.30	0.00	2.41	HOLD	14.62	16.37	-5.39	-10.71	4.24	4.36	N/A
NSR	National Storage	1867.46	1.85	0.82	1.83	HOLD	22.40	23.17	-16.06	-3.35	4.33	4.29	N/A
RFF	Rural Funds Group	820.15	2.41	-0.41	2.43	BUY	15.73	16.31	10.98	-3.59	4.46	4.68	N/A
SCG	Scentre Grp	12353.10	2.40	0.84	2.36	HOLD	16.08	12.57	-40.36	28.00	3.62	6.40	N/A
SCP	SCA Property Group	2519.18	2.36	0.85	2.37	HOLD	15.64	16.65	-6.21	-6.06	5.61	5.18	N/A
SGP	Stockland	10383.81	4.39	0.92	4.11	HOLD	13.63	14.18	-9.98	-3.87	5.54	5.53	N/A
URW	UnibailRodawestfield	631.37	2.79	-0.36	2.96	HOLD	4.17	4.01	-34.40	4.01	9.37	13.64	N/A
VCC	Vicinity Centres	6327.66	1.40	0.72	1.38	HOLD	9.60	17.07	-18.15	-43.80	5.77	5.73	September 2020 quarterly update
WPR	Waypoint REIT	2174.51	2.77	0.00	2.88	BUY	18.42	17.36	0.94	6.12	5.42	5.76	N/A

➤ IT stocks:

Code	Company Name	Market Cap (\$m)	Price (\$)	Daily Price Change (%)	Consensus Target Price (\$)	Consensus Rating	2020 PE	2021 PE	2020 EPS GROWTH	2021 EPS GROWTH	2020 Div Yield	2021 Div Yield	Newsflash
AD8	Audinate Group Ltd	560.34	7.21	-2.04	7.50	BUY	-742.53	-177.59	-331.19	-318.13	0.00	0.00	N/A
ALU	Altium Limited	5026.47	38.19	-0.50	36.30	HOLD	82.71	66.26	-23.62	24.83	1.14	1.36	N/A
APT	Afterpay Limited	29371.27	100.50	-2.66	105.65	BUY	-1159.30	1051.04	-120.64	210.30	0.00	0.00	N/A
APX	Appen Limited	4305.41	35.27	-0.34	40.00	BUY	58.66	40.80	15.21	43.77	0.31	0.44	N/A
BVS	Bravura Solution Ltd	741.50	2.93	-2.33	4.50	HOLD	18.05	17.98	9.68	0.41	3.77	3.80	N/A
CDA	Codan Limited	2211.20	12.05	-1.63	10.50	BUY	34.45	27.97	41.79	23.17	1.50	1.90	N/A
CPU	Computershare Ltd	6923.26	12.91	0.86	14.21	HOLD	16.84	18.57	-24.88	-9.30	3.10	3.32	N/A
DDR	Dicker Data Limited	1806.94	10.40	-0.95	-	-	N/A	N/A	N/A	N/A	N/A	N/A	N/A
DTL	Data#3 Limited	911.53	5.99	1.18	5.39	HOLD	39.28	33.84	27.08	16.07	2.33	2.67	N/A
ELO	Elmo Software	507.26	5.80	-1.19	7.60	BUY	-26.68	-21.76	-93.67	-22.59	0.00	0.00	N/A
EML	EML Payments Ltd	1136.06	3.10	-1.27	4.28	BUY	35.73	30.14	86.84	18.57	0.00	0.00	N/A
HSN	Hansen Technologies	777.32	3.82	-2.30	4.20	BUY	19.20	15.55	17.06	23.45	1.61	2.63	AGM Resolution Correction
IFM	Infomedia Ltd	639.75	1.68	-1.76	2.00	BUY	30.92	30.36	6.74	1.85	2.47	2.42	N/A
IRE	IRESS Limited	1904.27	10.00	1.52	11.48	HOLD	25.84	24.44	-8.98	5.72	4.33	4.51	IRE: Iress Completes OneVue acquisition
IRI	Integrated Research	628.44	3.57	-2.19	4.25	STRONG BUY	25.50	23.33	11.11	9.29	2.24	2.24	N/A
LNK	Link Admin Hldg	2583.35	4.83	-0.62	5.10	HOLD	18.92	21.95	-31.34	-13.84	2.44	2.24	N/A
MP1	Megaport Limited	2272.33	14.81	0.68	16.55	BUY	-61.71	-70.45	2.17	12.41	0.00	0.00	N/A
NEA	Nearmap Ltd	1191.54	2.46	1.23	3.13	BUY	-30.37	-41.60	-636.36	27.00	0.00	0.00	N/A
NXT	Nextdc Limited	6308.31	13.75	-0.65	13.89	BUY	-367.75	-1901.80	-169.38	80.66	0.00	0.00	N/A
TNE	Technology One	2924.75	9.17	0.11	8.66	HOLD	46.11	41.18	13.98	11.96	1.40	1.59	N/A
TYR	Tyro Payments	1898.66	3.90	2.63	4.00	HOLD	-81.81	-113.87	N/A	28.15	0.00	0.00	N/A
WTC	WiseTech Global Ltd	10065.58	31.40	1.00	26.00	HOLD	143.87	115.92	21.32	24.11	0.11	0.14	OFX: Strategic Alliance with WiseTech Global
XRO	Xero Ltd	16955.91	118.17	-0.45	84.65	HOLD	1045.57	437.97	423.74	138.73	0.00	0.00	N/A

➤ **Communication stocks:**

Code	Company Name	Market Cap (\$m)	Price (\$)	Daily Price Change (%)	Consensus Target Price (\$)	Consensus Rating	2020 PE	2021 PE	2020 EPS GROWTH	2021 EPS GROWTH	2020 Div Yield	2021 Div Yield	Newsflash
CAR	Carsales.Com Ltd.	5363.06	21.64	-0.60	19.50	HOLD	44.17	38.04	-9.23	16.11	1.92	2.20	N/A
CNU	Chorus Limited	3598.55	8.11	0.75	-	-	72.32	75.86	-6.84	-4.67	2.78	2.90	Results of Chorus annual shareholder meeting
DHG	Domain Holdings Aus	2524.02	4.38	1.39	3.55	HOLD	142.95	84.82	-57.11	68.54	0.69	0.71	N/A
EVT	Event Hospitality	1333.09	8.40	1.57	9.20	BUY	49.85	-72.62	-75.79	-168.65	2.50	1.81	Sale of Cinestar - Transaction Update
NEC	Nine Entertainment	4024.73	2.29	-2.97	2.10	BUY	26.15	25.60	-36.02	2.15	3.05	2.80	N/A
NWS	News Corp.	886.99	21.63	13.66	25.00	BUY	87.25	59.64	-59.05	46.29	1.18	1.29	FY2021 First Quarter Earnings Release
OML	Ooh!Media Limited	816.67	1.37	-0.72	1.25	BUY	-51.89	34.60	-116.49	250.00	0.00	0.44	N/A
REA	REA Group	16921.39	127.89	-0.45	108.00	HOLD	63.70	56.00	-15.40	13.73	0.82	0.93	REA Group Q1 FY21 financial information released
SEK	Seek Limited	7865.51	22.15	-0.58	20.45	HOLD	75.79	167.69	-47.41	-54.80	0.78	0.34	Appendix 3G
SLC	Superloop Limited	332.94	0.94	2.75	1.23	BUY	-9.99	-14.25	-30.69	29.91	0.13	0.10	N/A
SPK	Spark New Zealand	8000.08	4.33	0.23	-	HOLD	20.63	20.70	2.42	-0.35	5.42	5.17	Sparks 2020 Annual Meeting Materials
SXL	Sthn Cross Media	402.92	1.55	1.64	1.80	HOLD	6.68	11.92	-67.42	-43.97	7.74	0.00	Completion of consolidation
TLS	Telstra Corporation.	33063.37	2.80	0.72	3.50	BUY	15.19	20.52	-9.31	-26.02	5.69	5.54	N/A
TPG	TPG Telecom Limited	13517.41	7.36	1.24	8.71	BUY	50.04	36.97	N/A	35.35	0.83	1.66	N/A
UWL	Uniti Group Ltd	648.36	1.39	6.92	1.82	STRONG BUY	28.23	22.98	354.73	22.87	0.00	0.00	UWL: OptiComm Shareholders approve acquisition by Uniti
VOC	Vocus Group Ltd	2348.19	3.97	5.03	3.40	HOLD	23.35	23.19	4.41	0.69	0.00	0.00	N/A
VRL	Village Roadshow Ltd	445.29	2.29	0.44	2.20	HOLD	-12.72	-18.89	-254.28	32.67	0.44	0.00	Change in substantial holding

➤ **Utility stocks:**

Code	Company Name	Market Cap (\$m)	Price (\$)	Daily Price Change (%)	Consensus Target Price (\$)	Consensus Rating	2020 PE	2021 PE	2020 EPS GROWTH	2021 EPS GROWTH	2020 Div Yield	2021 Div Yield	Newsflash
AGL	AGL Energy Limited.	8055.83	12.85	-0.62	14.47	HOLD	10.26	12.94	-19.06	-20.74	7.43	7.63	N/A
APA	APA Group	13002.43	10.89	-1.18	11.24	HOLD	41.18	41.66	2.37	-1.13	4.59	4.62	N/A
AST	AusNet Services Ltd	7618.69	2.04	0.49	1.90	HOLD	27.67	28.30	5.46	-2.24	4.94	4.53	N/A
SKI	Spark Infrastructure	3580.37	2.06	0.00	2.29	HOLD	44.78	56.01	-23.70	-20.04	6.70	5.93	N/A

Disclaimer

This document was prepared by Deep Data Analytics. Deep Data Analytics and its related bodies corporate ("DDA"), its directors and/or employees charge a subscription for this report. Deep Data Analytics as principal, its directors and/or employees and their associates may hold securities in the companies mentioned in this report. Deep Data Analytics may seek to do business with any of the companies outlined in this report and should not be considered independent. This document contains Deep Data Analytics proprietary processed data and publicly available information. The information has not been verified or audited, and you are strongly advised to make your own independent assessment and investigation in respect of any matters contained in the document, including to seek independent professional advice. The document has been provided to you for your general information purposes only. It does not consider your particular investment objectives, financial situation or other specific needs. This report has been provided to you on the condition that it is purely general advice and not to be considered as personal advice at any level.

Deep Data Analytics or their respective directors, officers, employees or shareholders makes any representation or warranty, expressed or implied, and takes no responsibility, in respect of the accuracy, reliability, completeness or thoroughness of any of the information contained in this document. Each of those parties, to the maximum extent permitted by law, expressly disclaims, and as a recipient, you expressly release each of those parties from, all liabilities, including (without limitation) liability for negligence in respect of, any part of the information contained in the document. No such parties are under any obligation to update any information in this document or correct any inaccuracies or omissions that may exist or become apparent. Neither this document nor any additional information which may subsequently be provided to a recipient shall constitute or form part of any offer, solicitation, invitation, advice or recommendation to sell or acquire any securities or assets.

Deep Data Analytics provides this financial advice as an honest and reasonable opinion held at a point in time about an investment's risk profile and merit and the information is provided by the Deep Data Analytics in good faith. The views of the adviser(s) do not necessarily reflect the views of the AFS Licensee. Deep Data Analytics has no obligation to update the opinion unless Deep Data Analytics is currently contracted to provide such an updated opinion. Deep Data Analytics does not warrant the accuracy of any information it sources from others. All statements as to future matters are not guaranteed to be accurate and any statements as to past performance do not represent future performance. Assessment of risk can be subjective. Portfolios of equity investments need to be well diversified and the risk appropriate for the investor. Equity investments in listed or unlisted companies yet to achieve a profit or with an equity value less than \$50 million should collectively be a small component of a balanced portfolio, with smaller individual investment sizes than otherwise. Investors are responsible for their own investment decisions, unless a contract stipulates otherwise. Deep Data Analytics does not stand behind the capital value or performance of any investment. Subject to any terms implied by law and which cannot be excluded, Deep Data Analytics shall not be liable for any errors, omissions, defects or misrepresentations in the information (including by reasons of negligence, negligent misstatement or otherwise) or for any loss or damage (whether direct or indirect) suffered by persons who use or rely on the information. If any law prohibits the exclusion of such liability, Deep Data Analytics limits its liability to the re-supply of the Information, provided that such limitation is permitted by law and is fair and reasonable.

Copyright © Deep Data Analytics. All rights reserved. This material is proprietary to Deep Data Analytics and may not be disclosed to third parties. Any unauthorized use, duplication or disclosure of this document is prohibited. The content has been approved for distribution by Deep Data Analytics (ABN 67 159 532 213 AFS Representative No. 1282992) which is a corporate approved representative of BR Securities (ABN 92 168 734 530 and holder of AFSL No. 456663). Deep Data Analytics is the business name of ABN 67 159 532 213.