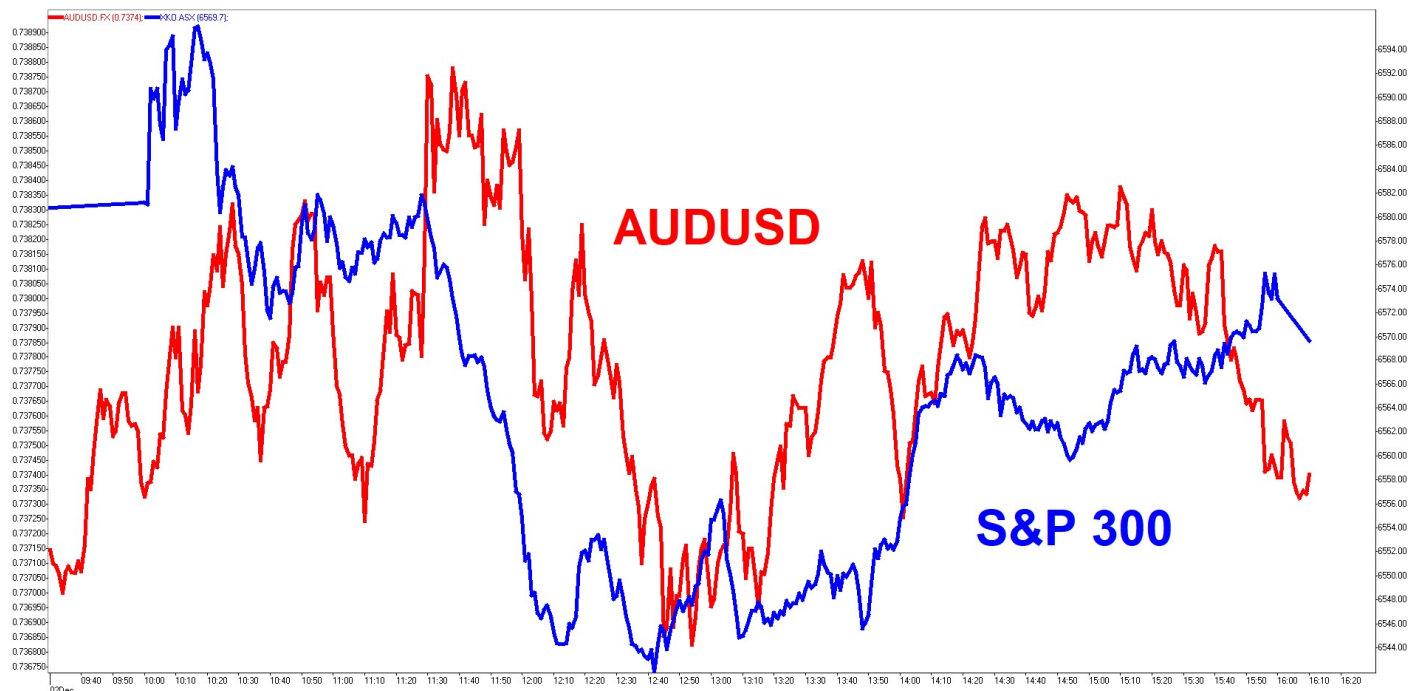


SUNSET STRIP

DEEP DATA ANALYTICS

INVESTMENT MOTTO: "Life is all about cycles. You evolve with the cycles or they run over you."

MARKET SNAPSHOT AND INTRADAY CHART



Security	Last	+/-	%	Security	Last	+/-	%	Security	Last	+/-	%
S&P 300	6569.70	0.80	0.01	DXY	91.1800	0.0000	0.00	SPTGLD	1808.60	-6.48	-0.36
S&P 200	6590.20	1.70	0.03	AUDUSD	0.7374	0.0004	0.06	TWI	61.30	-0.20	-0.33
All Ords	6811.30	-0.90	-0.01	NZDAUD	0.9586	0.0001	0.01	WTIS	44.15	-0.40	-0.90
Small Ords	3063.30	9.80	0.32	GBPAUD	1.8195	-0.0025	-0.14	BRENT	47.07	-0.42	-0.88
Micro Cap	1890.40	-1.30	-0.07	EURAUD	1.6374	-0.0007	-0.04	COPP3M	7649.00	-32.00	-0.42
NZ50G	12728.69	-1.22	-0.01	EURUSD	1.2074	0.0002	0.02	NICK3M	16150.00	-238.00	-1.45
JAPAN	26825.87	38.33	0.14	USDJPY	104.4200	0.1150	0.11	ZINC	2768.50	-41.00	-1.46
KOSPI	2669.78	35.53	1.35	CNYUSD	0.1526	0.0004	0.26	Security	Last	+/-	%
SING	2800.82	-13.30	-0.47	Security	Last	+/-	%	DOWFUT	29690.00	-114.00	-0.38
SHANGHAI	3454.96	3.10	0.09	USBON	0.9153	0.0723	8.58	NASFUT	12432.00	-20.25	-0.16
HNGKNG	26548.78	-18.90	-0.07	USLBR	1.6592	0.0913	5.82	SPFUT	3651.25	-9.25	-0.25
GERMAN	13382.30	91.14	0.69	BOND10	0.9885	0.0669	7.26				
CAC40	5581.64	63.09	1.14	BBSR3M	0.0193	-0.0007	-3.50				
FTSE	6384.73	118.54	1.89	VIX	20.77	0.20	0.97				
DOWJON	29823.92	185.28	0.63	XVI	14.49	-0.69	-4.54				
NASDAQ	12355.11	156.37	1.28								
SP500	3662.45	40.82	1.13								

Sources: AFR, AAP, ASX, Bloomberg, CNBC, CNN, FactSet, Hedgeye, IRESS, Market Watch, Thomson Reuters, S&P, SMH, Trading Economics

MARKET COMMENTARY:

1. Local market had a flat day with mining doing the heavy lifting on China data while weak US data keeps piling up. US markets finished positive on stimulus and vaccine but the senate republicans rained on the stimulus deal straight after their market close. Vaccine hope is still medium term catalyst for the economy while short term economic slowdown was further confirmed with manufacturing and auto sales data. Pandemic outlook in the US suggests there are restrictions coming sooner than later. Media speculation is just about everyone in the White House is boking in a presidential pardon. Supposedly there is so much of that going one...there is even reports of pardon for donation being investigated. Nothing that happens in the White House can surprise anyone anymore!

RBA started their update with...we don't target property market and then just about everything had a link to the property market. Australia has two growth engines...commodity bubble or property bubble. Fighting with China creates uncertainty for commodities and further forces the risk in property bubble. Every so called reform and handout is targeting property bubble. Almost 60-70% of fund managers chase direct or indirect property bubble exposure and government handouts. Small business is the biggest employer and they have not paid rent, utilities or wages...and that is about to change. Government basically paid workers wages to classify them as employed while being unemployed. Just imagine the amount of money being pumped to keep the property bubble afloat in rising unemployment, falling migration, falling rents and oversupplied apartments. Someone will be paying taxes for decades to unwind this mess!

US 10 year bond yield is breaking higher again (i.e. chart below) and forming the Golden Cross pattern with 50 day and 100 day MA breaking above 200 day MA. Reflation trade is building momentum. Growth multiples are going to come lower and value stocks will continue to catch a bid on cyclical recovery. Has the 40 year bond cycle? If not...we are falling into double dip recession in the US and that is a credible option now due to pandemic management.

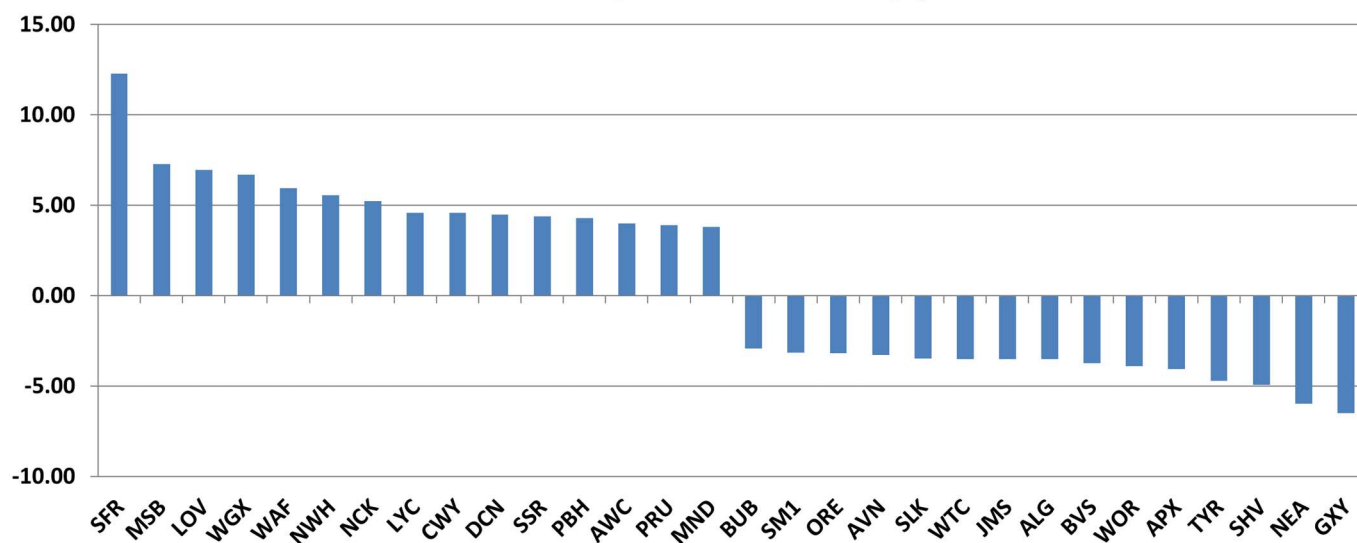


US market had a positive day on the back of stimulus and vaccine hope over Covid pandemic and economic issues. Bipartisan group has put together a stimulus bill around \$1t and it's already getting hit by Senate Republicans. Deal looks to be on the slow path as both sides are more than \$1t away from each other. Vaccine hope is pricing in perfect execution in production and distribution in a unproven tech and logistics level. Doctors are worried about decent side effects on 10-15% may keep them from coming for their second shot...ignoring the 20-30% on political reasons. Covid is rampant and economic data has started to fade. Bonds, USD and Oil fell. Gold, Copper and yields moving up. NASDAQ was the best and DOW was the laggard. Gold and Banks were the best sectors while Industrials were the only red sector. Yields are too high again and growth stock multiples can't hold. Do you have enough Gold? Never enough in this market.

Remain nimble, contrarian and cautiously pragmatic with elevated global macro risks!!! Buckle up...it's going to get bumpy!!!

2. Movers and Shakers in S&P 300 >

S&P 300 Best/Worst 15 Performers (%)



3. CNN Fear & Greed Index >

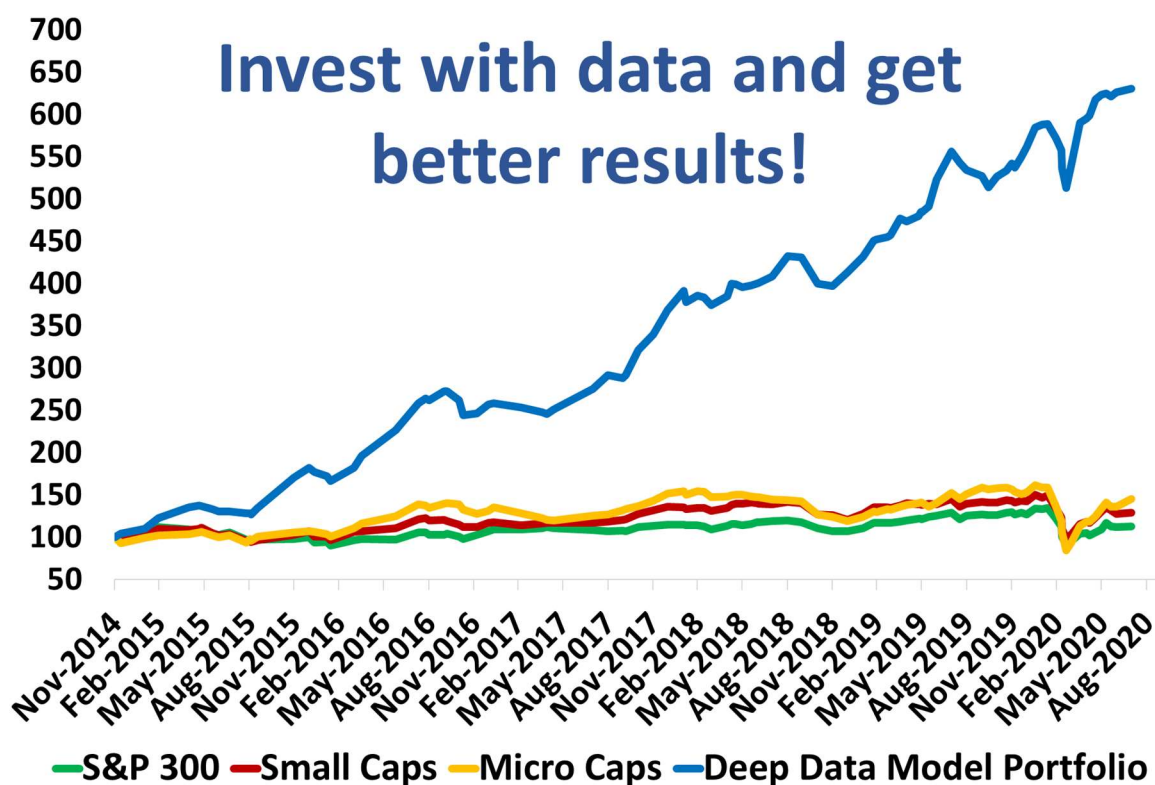


4. **Downer EDI (DOW +0.95%)** > Downer EDI Limited (Downer) announced today it had entered into an agreement to sell 70% of its Laundries business to an entity established by Australian private equity firm, Adamantem Capital (Adamantem). Under the agreement, Downer will sell a 70% interest in Laundries and receive total proceeds of approximately \$155 million on a cash and debt free basis. Following the transaction, Downer will cease to consolidate the Laundries business and will recognise its residual 30% ownership interest as an Equity Accounted Investment. The Chief Executive Officer of Downer, Grant Fenn, said the transaction represented a significant step in Downer's Urban Services strategy. **ASX**
5. **Mesoblast (MSB +7.26%)** > Mesoblast Limited (ASX:MSB; Nasdaq:MESO), global leader in allogeneic cellular medicines for inflammatory diseases, today announced that the United States Food and Drug Administration (FDA) has granted Fast Track designation for remestemcel-L in the treatment of acute respiratory distress syndrome (ARDS) due to COVID-19 infection. Fast Track designation is granted if a therapy demonstrates the potential to address unmet medical needs for a serious or life-threatening disease.¹ ARDS is the primary cause of death in patients with COVID-19. Fast Track designation by the FDA is intended to facilitate development and expedite review of therapies to treat serious and life-threatening conditions with no or limited treatment options so that an approved product can reach the market expeditiously. **ASX**
6. **National Australia Bank (NAB -0.17%)** > National Australia Bank today announced the appointment of Les Matheson to its Executive Leadership Team. Mr Matheson has been appointed Chief Operating Officer, with responsibility for UBank, Group Marketing, Corporate Affairs and other key strategic initiatives. Mr Matheson was Chief Executive Officer for Personal and Business Banking at the Royal Bank of Scotland until he finished with RBS in September this year. He has held senior executive banking roles in the UK and Asia Pacific during more than two decades in the industry, including Citigroup's Country Officer for Australia and Retail CEO for Australia. **ASX**
7. **Nickel Mines (NIC N/T)** > The Directors of Nickel Mines Limited ('the Company' or 'Nickel Mines') are pleased to launch a A\$364 million fully underwritten, accelerated pro-rata non-renounceable entitlement offer ('Entitlement Offer') to fund the acquisition of its initial 30% interest in the Angel Nickel Project ('ANI') within the Indonesia Weda Bay Industrial Park ('IWIP'). As announced on 24 November 2020, Nickel Mines has executed a binding Definitive Agreement ('Agreement') with its partner Shanghai Decent Investment (Group) Co., Ltd ('Shanghai Decent') and Decent Resource Limited ('Decent Resource') (an affiliate of Shanghai Decent) to acquire a 70% equity interest in ANI (the 'Transaction'). **ASX**
8. **SSR Mining (SSR +4.37%)** > SSR Mining Inc. (NASDAQ/TSX: SSRM; ASX: SSR) ("SSR Mining") is pleased to announce the positive results of its independently prepared Master Plan study of the Çöpler District ("Çöpler District Master Plan 2020" or "CDMP20") which will be set forth in an independent National Instrument 43-101 Technical Report on the Çöpler mine. Çöpler has been in continuous operations since 2010 and has cumulatively produced over 2 Moz of gold. **ASX**
9. **West African Resources (WAF +5.95%)** > Unhedged gold mining company West African Resources Limited ('West African' or the 'Company', ASX: WAF) is pleased to report high grades and extensive visible gold have been intercepted in the deep diamond drilling beneath reserves at the M1 South deposit, Sanbrado Gold Project, Burkina Faso. **ASX**
10. **Westpac Group (WBC +0.10%)** > Westpac Group today announced it will sell Westpac General Insurance Limited and Westpac General Insurance Services Limited to Allianz and enter into an exclusive 20-year agreement for the distribution of general insurance products to Westpac's customers. The sale price of \$725m represents a multiple of 1.3x FY20 gross written premium and is estimated to result in a small post-tax gain on sale in FY 2021. The sale of our General Insurance business adds around 12 bps to Westpac's common equity Tier 1 capital ratio. **ASX**

Deep Data Analytics

Deep Data Analytics is the brainchild of Mathan Somasundaram, a 25-year veteran of the finance and technology sectors. In an increasingly volatile and uncertain economic and political landscape, Mathan saw the need for a dynamic data-driven investment strategy that can be used to optimise the risk-adjusted returns for investors. Seamlessly combining top-down and bottom-up approaches, the vertically integrated, multi-tiered model has been carefully calibrated over the years to rapidly adapt to evolving macro conditions and thereby ensure an effective and dynamic trade-off between risk and return.

Deep Data Analytics has been used as the focal point of strategy in macro marketing documents to Institutional and High Net Worth clients for over a decade. With successive years of consistent and reliable returns despite major disruptive thematic cycles, Deep Data Analytics is widely recognised as one of the leading integrated investment strategies in the market. And now, with the inclusion of a variety of risk/return investment options and insights, breadth of users from institutional to retail investors have access to cutting-edge analytics at their fingertips.



For more information visit... www.deepdataanalytics.com.au

Or email... info@deepdataanalytics.com.au

US markets overnight - Reuters

The S&P 500 and Nasdaq Composite indexes closed at record highs on Tuesday, with investors betting a COVID-19 vaccine will be available soon, and more confident about a speedy economic recovery following upbeat Chinese factory data.

Investors stayed focused on updates about a handful of vaccine candidates and the start of global shipments as drugmakers submit paperwork for regulatory approvals.

Pfizer Inc jumped almost 3% after the drugmaker and Germany's BioNTech SE sought emergency approval of their vaccine candidate from the European regulator.

The partners are neck-and-neck with rival Moderna Inc, which also applied for emergency approval from the European regulator. Its stock tumbled nearly 8% from a record high the day before.

"There is this optimism about what it means as we see news around vaccines emerge," said Bill Northey, senior investment director at U.S. Bank Wealth Management in Minneapolis.

"As we look toward a health solution, we could be sitting on a coiled spring of economic activity, but it could take a while for it to be unleashed."

Earlier in the day, global equities got a boost from data that showed China's factory activity in November increased at its fastest pace in a decade. Several other countries also reported sharp upticks in factory activity.

U.S. data showed a recovery in manufacturing activity lost momentum in November.

All 11 S&P 500 sector indexes rose, with communication services up 2% and leading gains.

Investors also focused on remarks by U.S. Treasury Secretary Steve Mnuchin and Federal Reserve Chair Jerome Powell at the Senate Banking Committee, where they agreed on the need for more aid for small businesses.

Meanwhile, a bipartisan group of U.S. lawmakers unveiled a \$908 billion COVID-19 relief bill aimed at breaking a months-long deadlock between Democrats and Republicans over new emergency assistance for small businesses, unemployed people, airlines and other industries during the pandemic.

The Dow Jones Industrial Average rose 0.63% to end at 29,823.92 points, while the S&P 500 gained 1.13% at 3,662.44. The Nasdaq Composite climbed 1.28% to 12,355.11. All three main stock indexes gained more than 10% in November.

Zoom Video Communications Inc slumped 15% after warning its gross margins would remain under pressure going into 2021.

Tesla Inc rose 3% after S&P Dow Jones Indices said it would add one of Wall Street's most valuable companies to the S&P 500 index in one go on Dec. 21, rather than in two tranches.

Micron Technology Inc advanced 4.7% as the chipmaker increased its revenue, gross margin and earnings forecast for the first quarter.

Advancing issues outnumbered decliners on the NYSE by a 2.45-to-1 ratio; on Nasdaq, a 1.38-to-1 ratio favored advancers.

The S&P 500 posted 48 new 52-week highs and no new lows; the Nasdaq Composite recorded 185 new highs and eight new lows.

Volume on U.S. exchanges was 13.5 billion shares, compared with the 11.5 billion average over the last 20 trading days. (Additional reporting by Shriya Ramakrishnan and Medha Singh in Bengaluru; Editing by Richard Chang)

US Movers and Shakers - CNBC

MARKET MOVERS

S&P NASDAQ DOW EUR ASIA COVID19

TOP

LNC	Lincoln Nationa...	5.676%	<div></div>
FLIR	FLIR Systems Inc	5.57%	<div></div>
WDC	Western Digital ...	5.325%	<div></div>
DFS	Discover Financ...	5.225%	<div></div>
CINF	Cincinnati Fina...	4.781%	<div></div>

BOTTOM

INFO	IHS Markit Ltd	5.892%	<div></div>
SPGI	S&P Global Inc	4.963%	<div></div>
APA	Apache Corp	4.034%	<div></div>
OXY	Occidental Petr...	3.998%	<div></div>
ETSY	ETSY Inc	3.752%	<div></div>

MARKET MOVERS

S&P NASDAQ DOW EUR ASIA COVID19

TOP

MU	Micron Technol...	4.665%	<div></div>
FOX	Fox Corp. Class B	4.651%	<div></div>
FOXA	Fox Corp. Class...	4.508%	<div></div>
SGEN	Seagen Inc	4.169%	<div></div>
ALGN	Align Technolo...	3.908%	<div></div>

BOTTOM

ZM	Zoom Video Co...	15.062%	<div></div>
MRNA	Moderna Inc	7.68%	<div></div>
DOCU	DocuSign Inc	5.341%	<div></div>
MELI	Mercadolibre Inc	2.039%	<div></div>
PDD	Pinduoduo Inc	1.635%	<div></div>

MARKET MOVERS

S&P NASDAQ DOW EUR ASIA COVID19

TOP

AAPL	Apple Inc	3.083%	<div></div>
TRV	Travelers Comp...	2.9%	<div></div>
INTC	Intel Corp	2.503%	<div></div>
JNJ	Johnson & John...	1.915%	<div></div>
JPM	JPMorgan Chas...	1.578%	<div></div>

BOTTOM

CRM	Salesforce.Com...	1.81%	<div></div>
MMM	3M Co	1.28%	<div></div>
MCD	McDonald's Corp	0.598%	<div></div>
HD	Home Depot Inc	0.292%	<div></div>
IBM	International B...	0.292%	<div></div>

MARKET MOVERS

S&P NASDAQ DOW EUR ASIA COVID19

TOP

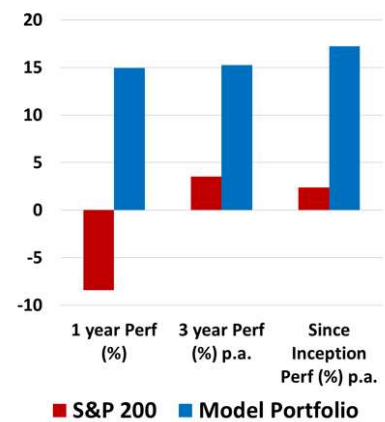
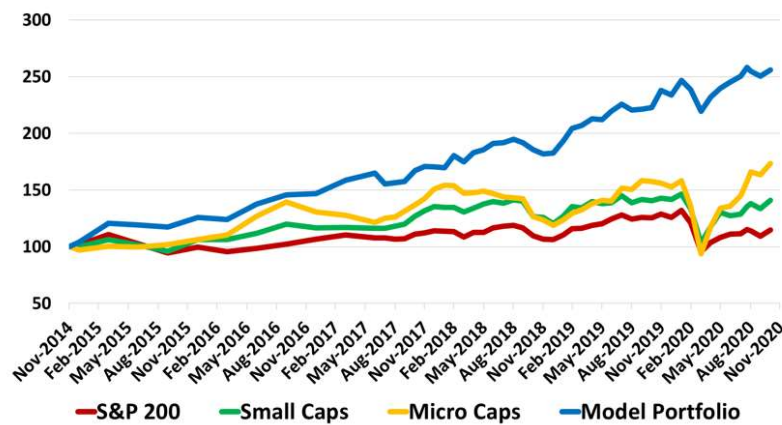
PFE	Pfizer Inc	2.871%	<div></div>
RHHBY	Roche Holding ...	2.229%	<div></div>
GSK	GlaxoSmithKlin...	1.984%	<div></div>
JNJ	Johnson & John...	1.915%	<div></div>
ALNY	Alnylam Pharm...	1.817%	<div></div>

BOTTOM

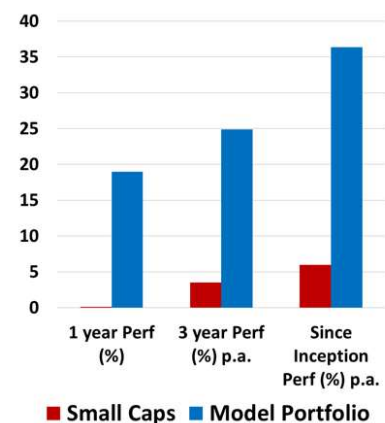
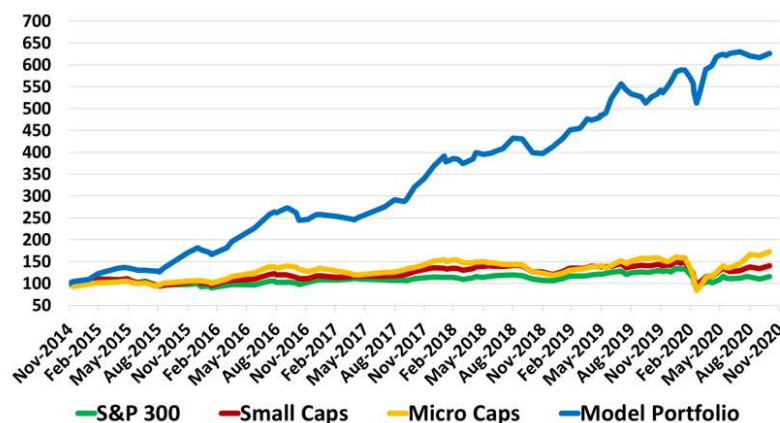
NVAX	Novavax Inc	11.491%	<div></div>
BNTX	BioNTech SE	8.234%	<div></div>
MRNA	Moderna Inc	7.68%	<div></div>
CVAC	CureVac NV	7.645%	<div></div>
QDEL	Quidel Corp	3.127%	<div></div>

Deep Data Analytics

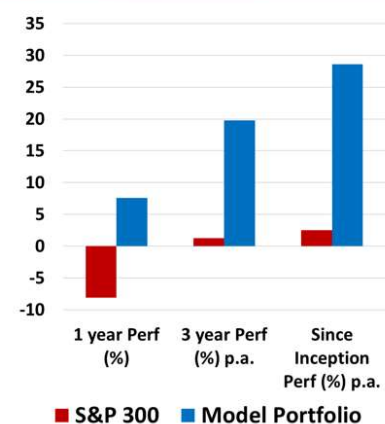
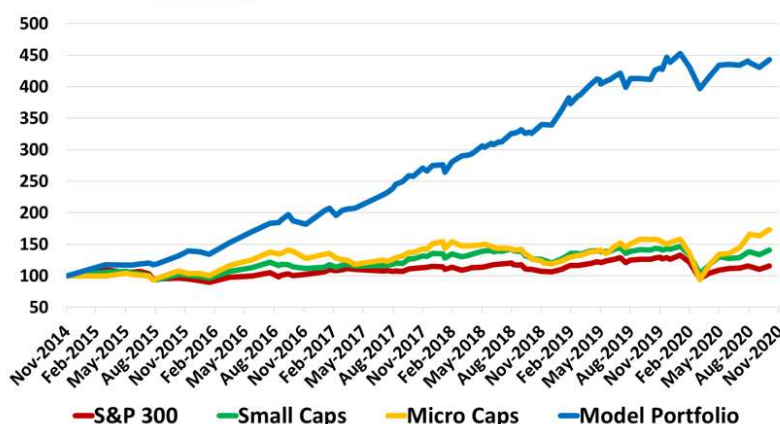
S&P 100 Best 10 with Cash



Small Cap Best 10 with Cash



GARY Best 10 with Cash



For more information visit... www.deepdataanalytics.com.au

Or email... info@deepdataanalytics.com.au

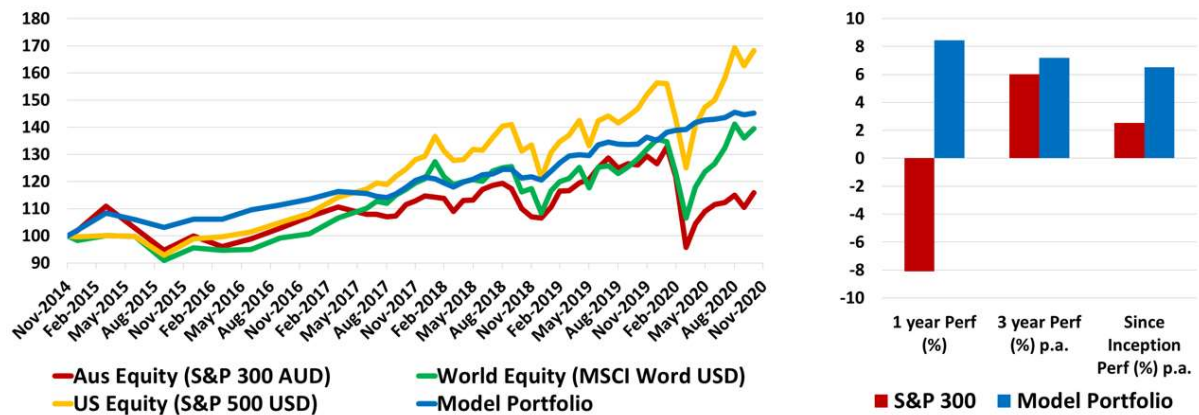
TODAY'S TOP 30 WINNERS AND LOSERS IN S&P 300

Code	Company Name	Market Cap (\$m)	Price (\$)	Daily Price Change (%)	Consensus Target Price (\$)	Consensus Rating	2020 PE	2021 PE	2020 EPS GROWTH	2021 EPS GROWTH	2020 Div Yield	2021 Div Yield	Newsflash
SFR	Sandfire Resources	857.39	5.40	12.27	5.40	BUY	11.04	8.03	-27.98	37.40	2.62	3.06	Ceasing to be a substantial holder
MSB	Mesoblast Limited	2422.60	4.43	7.26	3.80	HOLD	-24.65	-39.81	50.74	38.07	0.00	0.00	Remestemcel-L FDA Fast Track Designation for COVID-19 ARDS
LOV	Lovisa Holdings Ltd	1128.33	11.23	6.95	11.69	HOLD	27.47	53.11	18.57	-48.29	0.38	0.94	N/A
WGX	Westgold Resources.	1013.01	2.55	6.69	3.15	STRONG BUY	25.93	10.17	495.94	154.93	0.00	0.26	N/A
WAF	West African Res Ltd	812.71	0.98	5.95	1.28	BUY	6.07	2.82	2251.07	115.09	0.00	0.00	WAF hits 6m at 20.6 g/t Au 400m beneath reserves at M1 South
NWH	NRW Holdings Limited	1156.32	2.86	5.54	3.16	STRONG BUY	13.74	12.19	64.99	12.73	1.61	2.43	Becoming a substantial holder for PGX
NCK	Nick Scali Limited	715.23	9.29	5.21	9.85	BUY	19.14	11.09	-5.88	72.67	4.83	6.79	N/A
LYC	Lynas Corporation	3352.01	3.89	4.57	3.35	BUY	-597.54	64.19	-113.75	1030.88	0.00	0.00	N/A
CWY	Cleanaway Waste Ltd	4959.43	2.52	4.56	2.45	BUY	36.41	32.38	-1.68	12.42	1.52	1.73	N/A
DCN	Dadan Gold Ltd	186.43	0.35	4.48	0.42	HOLD	-3.65	4.73	-526.22	177.08	0.00	0.00	N/A
SSR	SSR Mining Inc.	411.57	26.50	4.37	-	-	N/A	N/A	N/A	N/A	N/A	N/A	Positive Results of the Copler District Master Plan Studies
PBH	Pointsbet Holdings	2137.34	12.16	4.29	12.80	BUY	-45.24	-38.45	N/A	-17.67	0.00	0.00	N/A
AWC	Alumina Limited	5077.94	1.82	4.00	2.00	BUY	24.13	22.11	-55.78	9.12	3.86	4.11	N/A
PRU	Perseus Mining Ltd	1422.23	1.21	3.88	1.60	BUY	22.66	16.64	1376.94	36.17	0.00	0.17	N/A
MND	Monadelphous Group	1297.13	14.22	3.80	11.45	BUY	36.72	24.34	-41.75	50.88	2.01	2.99	N/A
GWA	GWA Group Ltd	776.74	3.05	3.74	2.73	HOLD	16.63	20.00	-8.14	-16.84	4.40	3.50	N/A
SGM	Sims Limited	2253.42	11.60	3.66	9.72	HOLD	-40.29	47.75	-136.83	184.37	0.80	0.71	N/A
DRR	Deterra Royalties	2430.93	4.76	3.48	4.45	HOLD	58.05	35.90	N/A	61.71	1.72	2.24	N/A
VUK	Virgin Money UK PLC	2263.80	2.47	3.35	2.68	BUY	21.17	11.42	-75.46	85.37	0.00	0.00	Director/PDMR Shareholding
SBM	St Barbara Limited	1770.45	2.59	3.19	3.90	BUY	11.65	8.84	-19.77	31.89	3.29	2.49	N/A
TWE	Treasury Wine Estate	6060.10	8.65	2.98	10.40	BUY	19.69	22.38	-28.27	-12.00	3.13	2.91	N/A
COE	Cooper Energy Ltd	569.33	0.36	2.86	0.46	BUY	-97.04	324.32	-192.75	129.92	0.00	0.00	N/A
BPT	Beach Energy Limited	4037.96	1.82	2.82	1.80	BUY	9.36	11.78	-21.78	-20.58	1.06	1.08	N/A
GOR	Gold Road Res Ltd	1099.91	1.29	2.80	2.00	BUY	15.90	11.55	9638.55	37.68	1.00	2.32	Investor Presentation - December 2020
NEC	Nine Entertainment	4007.67	2.41	2.55	2.75	BUY	27.52	20.78	-36.02	32.48	2.90	3.28	N/A
SIQ	Smartgrp Corporation	823.49	6.35	2.42	6.80	BUY	13.34	12.32	-23.40	8.30	5.23	5.63	N/A
RMS	Ramelius Resources	1399.60	1.77	2.31	2.33	BUY	13.89	8.33	206.99	66.80	0.56	1.81	N/A
NGI	Navigator Global Ltd	282.14	1.78	2.30	2.24	STRONG BUY	7.40	12.08	-14.29	-38.73	12.11	7.70	N/A
NHC	New Hope Corporation	1111.20	1.37	2.25	1.30	HOLD	8.46	182.00	-63.03	-95.35	6.06	0.66	N/A
URW	Unibailrodawestfield	1113.92	5.05	2.23	3.62	HOLD	7.85	7.12	-36.83	10.16	5.25	7.47	N/A

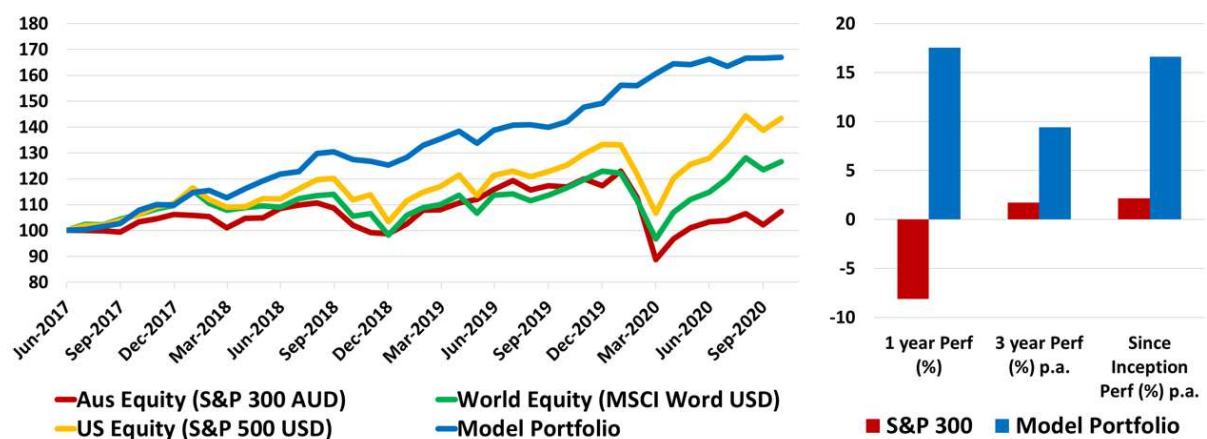
Code	Company Name	Market Cap (\$m)	Price (\$)	Daily Price Change (%)	Consensus Target Price (\$)	Consensus Rating	2020 PE	2021 PE	2020 EPS GROWTH	2021 EPS GROWTH	2020 Div Yield	2021 Div Yield	Newsflash
GXY	Galaxy Resources	880.38	2.01	-6.51	1.39	HOLD	-40.46	-82.57	39.33	51.00	0.00	0.00	Appendix 3G
NEA	Nearmap Ltd	1151.17	2.20	-5.98	3.10	BUY	-27.16	-35.55	-636.36	23.60	0.00	0.00	N/A
SHV	Select Harvests	700.36	5.56	-4.96	7.23	BUY	22.80	22.22	-50.89	2.61	2.55	2.77	N/A
TYR	Tyro Payments	1930.31	3.63	-4.72	3.97	HOLD	-76.15	-103.71	N/A	26.58	0.00	0.00	N/A
APX	Appen Limited	3934.36	31.02	-4.08	40.00	BUY	51.79	37.08	14.78	39.65	0.36	0.51	N/A
WOR	Worley Limited	6786.93	12.49	-3.92	11.70	BUY	16.70	18.25	25.61	-8.53	3.03	3.51	N/A
BVS	Bravura Solution Ltd	855.19	3.33	-3.76	3.80	HOLD	20.51	21.62	9.68	-5.13	3.31	3.18	N/A
ALG	Ardentleisuregrpltd	407.75	0.82	-3.53	0.87	BUY	-7.79	-6.05	-406.01	-28.74	0.00	0.00	N/A
JMS	Jupiter Mines.	558.31	0.28	-3.51	0.40	BUY	5.50	16.18	N/A	-66.00	22.73	7.76	N/A
WTC	WiseTech Global Ltd	10347.25	30.84	-3.50	27.00	HOLD	141.31	113.89	21.32	24.07	0.11	0.14	N/A
SLK	Sealink Travel Grp	1572.47	6.95	-3.47	6.28	BUY	40.31	26.03	-27.44	54.85	1.54	2.01	N/A
AVN	Aventus Group	1554.94	2.65	-3.28	2.75	HOLD	15.11	14.39	-2.56	5.00	4.50	6.12	N/A
ORE	Orocobre Limited	1407.14	3.96	-3.18	3.05	BUY	-33.70	-39.99	-150.33	15.71	0.00	0.00	N/A
SM1	Synlait Milk Ltd	1106.02	4.90	-3.16	6.56	BUY	11.81	14.81	-13.30	-20.25	0.00	0.00	Synlait releases 2020 Sustainability Report
BUB	Bubs Aust Ltd	419.75	0.67	-2.92	0.65	SELL	-55.42	-83.13	N/A	33.33	0.00	0.00	N/A
SKY	Senex Energy Limited	512.13	0.34	-2.86	0.43	BUY	56.67	50.37	7.91	12.50	0.00	0.00	N/A
AD8	Audinate Group Ltd	564.20	7.20	-2.70	7.50	BUY	-741.50	-177.34	-331.19	-318.13	0.00	0.00	N/A
PLS	Pilbara Min Ltd	1670.75	0.73	-2.67	0.36	HOLD	-22.81	-64.66	-93.94	64.72	0.00	0.00	N/A
GMG	Goodman Group	35156.58	18.53	-2.63	19.85	HOLD	32.23	29.14	12.11	10.57	1.62	1.62	N/A
IFM	Infomedia Ltd	739.18	1.92	-2.54	2.00	BUY	35.44	34.80	6.74	1.85	2.15	2.11	N/A
IMD	Imdex Limited	553.05	1.36	-2.51	1.60	STRONG BUY	22.36	30.11	-16.29	-25.74	2.28	1.31	N/A
ELD	Elders Limited	1715.56	10.71	-2.46	13.50	BUY	15.88	13.71	33.54	15.83	1.90	2.42	N/A
FPH	Fisher & Paykel H.	19472.23	32.96	-2.46	36.39	BUY	73.19	46.50	30.39	57.39	0.83	1.10	Disclosure Document
NWL	Netwealth Group	3929.10	16.13	-2.42	14.50	HOLD	90.39	75.02	21.64	20.49	0.87	1.04	N/A
HUM	Humm Group	633.94	1.25	-2.34	1.40	BUY	12.04	9.66	-47.24	24.69	3.90	2.63	N/A
TPW	Temple & Webster Ltd	1209.35	9.81	-2.29	12.60	BUY	140.14	49.95	577.64	180.57	0.00	0.00	N/A
JBH	JB Hi-Fi Limited	5324.84	45.30	-2.27	48.90	HOLD	16.01	14.51	34.77	10.37	3.86	4.53	N/A
SPL	Starpharma Holdings	544.06	1.31	-2.24	2.03	STRONG BUY	-36.39	-53.47	-9.09	31.94	0.00	0.00	N/A
TGR	Tassal Group Limited	769.26	3.56	-2.20	4.30	BUY	11.16	11.15	-0.78	0.08	5.15	5.06	N/A
ANN	Ansell Limited	4889.18	37.23	-2.13	41.74	HOLD	22.72	19.36	3.27	17.32	1.91	2.20	N/A

Deep Data Analytics

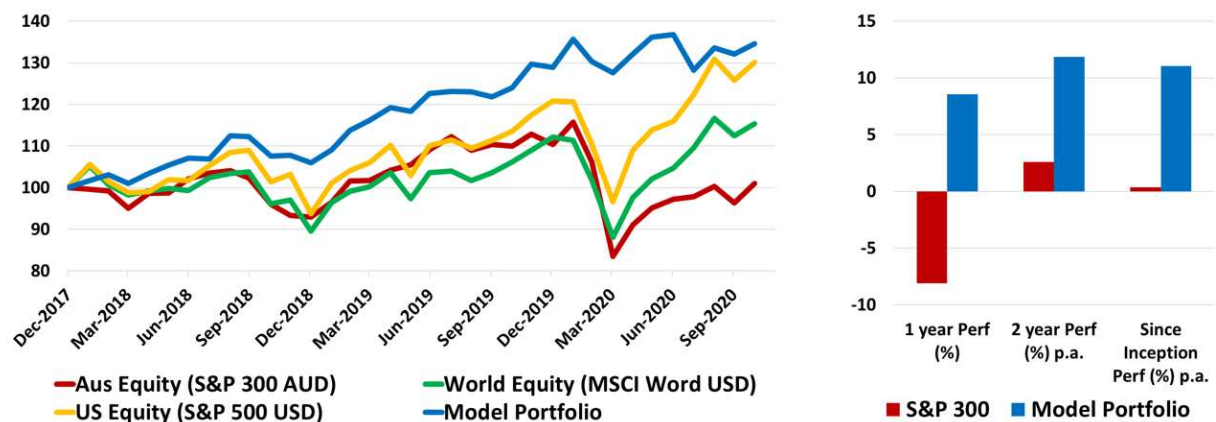
Multi Asset ETF Model



Global Tech/Health ETF Model



ESG ETF Model



For more information visit... www.deepdataanalytics.com.au

Or email... info@deepdataanalytics.com.au

CHECKING S&P 300 BY THE SECTOR

➤ Energy stocks:

Code	Company Name	Market Cap (\$m)	Price (\$)	Daily Price Change (%)	Consensus Target Price (\$)	Consensus Rating	2020 PE	2021 PE	2020 EPS GROWTH	2021 EPS GROWTH	2020 Div Yield	2021 Div Yield	Newsflash
ALD	Ampol Limited	7705.96	30.68	-0.58	30.00	HOLD	37.92	20.23	-38.30	87.42	1.46	2.87	N/A
BPT	Beach Energy Limited	4037.96	1.82	2.82	1.80	BUY	9.36	11.78	-21.78	-20.58	1.06	1.08	N/A
COE	Cooper Energy Ltd	569.33	0.36	2.86	0.46	BUY	-97.04	324.32	-192.75	129.92	0.00	0.00	N/A
CVN	Camaron Petroleum	438.31	0.28	0.00	0.36	BUY	-93.33	-80.00	52.61	-16.67	0.00	0.00	N/A
FAR	FAR Ltd	109.77	0.01	0.00	0.03	BUY	-2.75	-14.67	-300.00	81.25	0.00	0.00	N/A
KAR	Karoon Energy Ltd	548.06	0.98	-1.01	1.40	BUY	-6.78	-126.45	-32.62	94.64	0.00	0.00	Ceasing to be a substantial holder
NHC	New Hope Corporation	1111.20	1.37	2.25	1.30	HOLD	8.46	182.00	-63.03	-95.35	6.06	0.66	N/A
ORG	Origin Energy	9123.07	5.09	-1.74	6.14	BUY	8.70	21.98	0.31	-60.43	5.52	4.09	N/A
OSH	Oil Search Ltd	7625.71	3.70	0.82	3.80	HOLD	666.09	31.38	-98.26	2022.34	0.16	0.96	N/A
SOL	Soul Pattinson (W.H)	6961.62	28.47	-2.10	24.16	BUY	32.98	41.26	-42.83	-20.08	1.98	2.14	N/A
STO	Santos Ltd	12935.84	6.24	0.48	6.59	BUY	30.45	18.78	-61.48	62.17	1.09	1.27	N/A
SKY	Senex Energy Limited	512.13	0.34	-2.86	0.43	BUY	56.67	50.37	7.91	12.50	0.00	0.00	N/A
VEA	Viva Energy Group	3032.49	1.88	0.00	2.44	BUY	-184.55	21.20	-111.62	970.47	3.41	3.51	N/A
WHC	Whitehaven Coal	1399.23	1.37	0.74	1.86	BUY	49.58	-19.81	-94.87	-350.35	1.07	0.00	N/A
WOR	Worley Limited	6786.93	12.49	-3.92	11.70	BUY	16.70	18.25	25.61	-8.53	3.03	3.51	N/A
WPL	Woodside Petroleum	21361.41	22.42	0.99	23.75	BUY	30.30	23.88	-57.48	26.91	2.62	3.15	N/A

➤ Material (Ex Mining) stocks:

Code	Company Name	Market Cap (\$m)	Price (\$)	Daily Price Change (%)	Consensus Target Price (\$)	Consensus Rating	2020 PE	2021 PE	2020 EPS GROWTH	2021 EPS GROWTH	2020 Div Yield	2021 Div Yield	Newsflash
ABC	Adbri Limited	2048.12	3.15	0.32	2.50	HOLD	20.28	21.00	-17.00	-3.42	3.08	3.02	N/A
AMC	Amcor PLC	13676.38	15.55	0.65	17.70	BUY	16.93	16.07	2.04	5.32	4.61	4.22	N/A
BKW	Brickworks Limited	2960.68	19.62	0.46	20.98	BUY	18.31	28.88	-35.27	-36.61	2.96	3.05	N/A
BLD	Boral Limited	6042.47	4.90	-0.61	4.80	HOLD	28.98	27.56	-57.97	5.14	2.04	0.87	N/A
CSR	CSR Limited	2349.25	4.92	1.65	4.94	HOLD	20.94	16.07	-35.95	30.30	4.05	4.57	N/A
FBU	Fletcher Building	4516.93	5.52	0.73	6.48	BUY	90.32	15.44	-85.07	484.93	0.50	3.25	Substantial Product Holder Notice for FBU
IPL	Inditec Pivot	4564.23	2.35	0.00	2.40	BUY	20.67	19.45	31.06	6.32	1.28	2.33	N/A
JHX	James Hardie Indust	17202.56	38.17	-1.50	41.20	BUY	31.65	29.48	21.15	7.36	0.72	1.24	N/A
NUF	Nufarm Limited	1575.73	4.10	-1.20	4.80	BUY	-46.38	39.54	-137.02	217.30	0.16	0.54	N/A
ORA	Orora Limited	2525.50	2.65	-0.75	2.69	HOLD	15.91	17.15	-26.79	-7.21	23.05	4.39	Daily share buy-back notice - Appendix 3E
ORI	Orica Limited	6652.35	16.30	-0.55	18.35	BUY	20.10	19.47	-15.11	3.25	2.40	2.66	N/A
PGH	Pact Group Hldgs Ltd	870.30	2.57	1.58	2.70	HOLD	13.79	12.40	-16.68	11.21	0.00	2.88	N/A

➤ Gold stocks:

Code	Company Name	Market Cap (\$m)	Price (\$)	Daily Price Change (%)	Consensus Target Price (\$)	Consensus Rating	2020 PE	2021 PE	2020 EPS GROWTH	2021 EPS GROWTH	2020 Div Yield	2021 Div Yield	Newsflash
ALK	Alkane Resources Ltd	622.18	1.07	1.91	1.05	BUY	42.62	26.63	-37.46	60.06	0.00	0.00	N/A
BGL	Bellevue Gold Ltd	1139.26	1.35	0.75	1.55	STRONG BUY	-93.10	-168.75	-31.82	44.83	0.00	0.00	N/A
DCN	Dacian Gold Ltd	186.43	0.35	4.48	0.42	HOLD	-3.65	4.73	-526.22	177.08	0.00	0.00	N/A
DEG	De Grey Mining	1399.86	1.08	-1.37	1.11	STRONG BUY	N/A	N/A	N/A	N/A	0.00	0.00	N/A
EVN	Evolution Mining Ltd	8765.19	5.18	0.97	5.50	HOLD	23.49	18.09	67.27	29.86	2.37	2.82	N/A
GOR	Gold Road Res Ltd	1099.91	1.29	2.80	2.00	BUY	15.90	11.55	9638.55	37.68	1.00	2.32	Investor Presentation - December 2020
NCM	Newcrest Mining	22724.77	27.85	0.07	34.00	HOLD	22.94	14.59	8.49	57.26	0.95	1.23	N/A
NST	Northern Star	9528.77	13.01	1.17	16.23	HOLD	25.97	15.38	72.00	68.90	1.14	1.69	N/A
PRU	Perseus Mining Ltd	1422.23	1.21	3.88	1.60	BUY	22.66	16.64	1376.94	36.17	0.00	0.17	N/A
RED	Red 5 Limited	522.29	0.27	1.89	0.41	BUY	38.57	#DIV/0!	-41.67	-100.00	0.00	0.00	N/A
RMS	Ramelius Resources	1399.60	1.77	2.31	2.33	BUY	13.89	8.33	206.99	66.80	0.56	1.81	N/A
RRL	Regis Resources	1999.94	3.91	0.00	5.55	HOLD	9.32	7.73	22.23	20.56	4.43	4.52	N/A
RSG	Resolute Mining	861.04	0.80	1.92	1.42	BUY	14.13	5.05	-12.21	179.85	2.25	2.50	N/A
SAR	Saracen Mineral	5360.96	4.88	0.83	6.15	HOLD	22.14	15.19	82.89	45.75	0.27	1.20	N/A
SBM	St Barbara Limited	1770.45	2.59	3.19	3.90	BUY	11.65	8.84	-19.77	31.89	3.29	2.49	N/A
SLR	Silver Lake Resource	1591.24	1.85	2.22	2.50	BUY	12.10	8.69	207.03	39.28	0.00	0.00	N/A
SSR	SSR Mining Inc.	411.57	26.50	4.37	-	-	N/A	N/A	N/A	N/A	N/A	N/A	Positive Results of the Copler District Master Plan Studies
WAF	West African Res Ltd	812.71	0.98	5.95	1.28	BUY	6.07	2.82	2251.07	115.09	0.00	0.00	WAF hits 6m at 20.6 g/t Au 400m beneath reserves at M1 South
WGX	Westgold Resources.	1013.01	2.55	6.69	3.15	STRONG BUY	25.93	10.17	495.94	154.93	0.00	0.26	N/A

➤ Mining (Ex Gold) stocks:

Code	Company Name	Market Cap (\$m)	Price (\$)	Daily Price Change (%)	Consensus Target Price (\$)	Consensus Rating	2020 PE	2021 PE	2020 EPS GROWTH	2021 EPS GROWTH	2020 Div Yield	2021 Div Yield	Newsflash
AMI	Aurelia Metals Ltd	463.67	0.43	1.18	0.77	STRONG BUY	9.09	6.52	-9.87	39.49	1.13	3.61	Becoming a substantial holder
AWC	Alumina Limited	5077.94	1.82	4.00	2.00	BUY	24.13	22.11	-55.78	9.12	3.86	4.11	N/A
BHP	BHP Group Limited	113592.03	39.31	1.95	40.20	BUY	15.61	12.64	-10.20	23.56	4.33	5.20	N/A
BSL	BlueScope Steel Ltd	8665.05	17.43	1.34	18.50	BUY	24.93	13.17	-60.76	89.22	0.70	0.86	N/A
CIA	Champion Iron Ltd	2171.72	4.60	0.22	4.22	BUY	14.25	6.40	-16.87	122.45	0.00	0.00	N/A
CMM	Capricorn Metals	577.88	1.70	1.19	1.60	HOLD	-79.07	103.03	N/A	176.74	0.00	0.00	N/A
DRR	Deterra Royalties	2430.93	4.76	3.48	4.45	HOLD	58.05	35.90	N/A	61.71	1.72	2.24	N/A
FMG	Fortescue Metals Grp	56437.43	18.23	-0.55	16.60	HOLD	8.49	7.05	54.22	20.47	9.20	10.05	N/A
GXY	Galaxy Resources	880.38	2.01	-6.51	1.39	HOLD	-40.46	-82.57	39.33	51.00	0.00	0.00	Appendix 3G
IGO	IGO Limited	2829.92	4.85	1.25	5.30	HOLD	18.12	20.34	99.92	-10.93	2.18	2.36	N/A
ILU	Iluka Resources	2261.82	5.37	0.37	5.50	BUY	13.11	10.89	-38.92	20.37	0.48	3.95	Iluka Presentation to Goldman Sachs Rare Earth Conference
IMD	Imdex Limited	553.05	1.36	-2.51	1.60	STRONG BUY	22.36	30.11	-16.29	-25.74	2.28	1.31	N/A
INR	Ioneer Ltd	480.34	0.28	-1.75	0.45	STRONG BUY	-0.89	-0.38	N/A	-131.33	N/A	0.00	N/A
JMS	Jupiter Mines.	558.31	0.28	-3.51	0.40	BUY	5.50	16.18	N/A	-66.00	22.73	7.76	N/A
LYC	Lynas Corporation	3352.01	3.89	4.57	3.35	BUY	-597.54	64.19	-113.75	1030.88	0.00	0.00	N/A
MAH	Macmahon Holdings	549.52	0.25	-1.96	0.37	STRONG BUY	8.93	7.94	-91.04	12.50	2.00	2.93	N/A
MGX	Mount Gibson Iron	877.58	0.74	-0.68	0.97	STRONG BUY	8.03	7.17	15.82	12.02	4.08	4.76	N/A
MIN	Mineral Resources.	6072.84	31.87	-1.02	26.50	HOLD	16.88	10.19	95.65	65.58	2.48	4.12	N/A
MID	MACA Limited	266.67	1.00	0.50	1.31	STRONG BUY	9.01	7.34	48.00	22.82	4.75	5.00	N/A
NIC	Nickel Mines Limited	2223.86	1.05	0.00	1.32	STRONG BUY	15.70	12.69	N/A	23.71	2.56	3.32	A\$364M equity raising to fund 30% interest in Angel Nickel
ORE	Orocobre Limited	1407.14	3.96	-3.18	3.05	BUY	-33.70	-39.99	-150.33	15.71	0.00	0.00	N/A
OZL	OZ Minerals	5499.47	16.93	1.99	15.90	HOLD	28.77	16.26	11.87	76.98	1.24	1.27	N/A
PLS	Pilbara Min Ltd	1670.75	0.73	-2.67	0.36	HOLD	-22.81	-64.66	-93.94	64.72	0.00	0.00	N/A
PRN	Perenti Global Ltd	929.67	1.34	1.52	1.71	BUY	8.69	8.41	-2.71	3.37	4.89	5.47	N/A
RIO	Rio Tinto Limited	38216.71	104.99	1.98	103.75	BUY	11.30	11.19	-2.32	1.01	5.85	6.01	N/A
S32	South32 Limited	11753.78	2.45	0.82	2.73	BUY	45.60	19.85	-81.90	129.73	1.64	1.98	Daily share buy-back notice - Appendix 3E
SFR	Sandfire Resources	857.39	5.40	12.27	5.40	BUY	11.04	8.03	-27.98	37.40	2.62	3.06	Ceasing to be a substantial holder
SGM	Sims Limited	2253.42	11.60	3.66	9.72	HOLD	-40.29	47.75	-136.83	184.37	0.80	0.71	N/A
WSA	Western Areas Ltd	635.40	2.33	0.87	2.35	BUY	14.34	68.53	188.76	-79.07	1.04	0.61	N/A

➤ Industrial stocks:

Code	Company Name	Market Cap (\$m)	Price (\$)	Daily Price Change (%)	Consensus Target Price (\$)	Consensus Rating	2020 PE	2021 PE	2020 EPS GROWTH	2021 EPS GROWTH	2020 Div Yield	2021 Div Yield	Newsflash
AIA	Auckland Internation	10896.88	7.44	0.54	6.73	HOLD	71.70	-2047.33	-52.52	-103.50	0.35	0.00	Issue of new Shares for Employee Share Purchase Plan
ALQ	ALS Ltd	4602.34	9.67	1.36	10.38	BUY	24.86	26.55	7.22	-6.37	1.73	1.95	N/A
ALX	Atlas Arteria	6300.75	6.53	-0.61	6.74	HOLD	63.79	19.01	-66.84	235.53	2.15	5.02	N/A
AMA	AMA Group Limited	549.98	0.77	2.00	0.86	BUY	109.29	33.26	-87.15	228.57	0.10	0.00	N/A
ASB	Austal Limited	1049.91	2.98	2.05	4.29	BUY	12.48	12.35	49.48	1.01	2.35	2.92	N/A
AZJ	Aurizon Holdings Ltd	7876.21	4.24	0.71	5.40	BUY	15.73	16.37	20.99	-3.92	6.36	6.13	On-Market Buy-back Appendix 3E
BIN	Bingo Industries Ltd	1700.59	2.63	1.15	2.56	BUY	33.34	42.50	-6.08	-21.56	1.18	0.98	N/A
BXB	Brambles Limited	16599.35	11.07	-0.18	12.25	BUY	23.59	22.50	-17.65	4.84	3.77	2.74	Change of Directors Interest Notice
CIM	Cimic Group Ltd	8068.80	26.13	0.81	32.00	BUY	12.74	12.73	-16.75	0.06	2.66	4.87	N/A
CWY	Cleanaway Waste Ltd	4959.43	2.52	4.56	2.45	BUY	36.41	32.38	-1.68	12.42	1.52	1.73	N/A
DOW	Downer EDI Limited	3702.82	5.33	0.95	5.29	BUY	19.13	14.51	-43.40	31.82	2.76	2.85	DOW: Downer to divest 70% of Laundries business
EHL	Emeco Holdings	571.26	1.06	0.48	1.19	BUY	5.20	8.01	10.52	-35.10	0.00	0.00	N/A
EOS	Electro Optic Sys.	993.21	6.66	0.30	7.67	STRONG BUY	36.80	27.81	-6.70	32.32	0.00	0.00	N/A
GWA	GWA Group Ltd	776.74	3.05	3.74	2.73	HOLD	16.63	20.00	-8.14	-16.84	4.40	3.50	N/A
IPH	IPH Limited	1505.00	6.96	0.00	8.73	BUY	19.13	19.01	20.76	0.64	4.11	4.19	N/A
MMS	McMillan Shakespeare	910.00	11.95	1.62	9.90	HOLD	13.63	13.27	-16.28	2.75	4.84	4.72	N/A
MND	Monadelphous Group	1297.13	14.22	3.80	11.45	BUY	36.72	24.34	-41.75	50.88	2.01	2.99	N/A
NWH	NRW Holdings Limited	1156.32	2.86	5.54	3.16	STRONG BUY	13.74	12.19	64.99	12.73	1.61	2.43	Becoming a substantial holder for PGX
PET	Phoslock Env Tec Ltd	153.13	0.25	0.00	-	-	N/A	N/A	N/A	N/A	N/A	N/A	N/A
QAN	Qantas Airways	10316.66	5.55	1.46	4.93	BUY	-108.29	-13.27	-108.78	-715.96	0.82	0.00	N/A
QUB	Qube Holdings Ltd	5537.11	2.92	0.34	3.20	BUY	45.31	47.39	-16.03	-4.39	1.70	1.63	N/A
RWC	Reliance Worldwide	3318.40	4.20	0.00	4.50	HOLD	26.43	20.98	-17.70	25.96	1.86	2.26	N/A
SIQ	Smartgrp Corporation	823.49	6.35	2.42	6.80	BUY	13.34	12.32	-23.40	8.30	5.23	5.63	N/A
SSM	Service Stream	942.45	2.31	0.43	2.59	STRONG BUY	16.21	16.72	1.06	-3.04	3.95	3.95	N/A
SVW	Seven Group Holdings	7645.73	22.78	1.11	23.30	BUY	17.79	17.34	-6.33	2.59	1.78	2.00	N/A
SYD	SYD Airport	18135.27	6.75	0.45	6.34	BUY	-74.00	1259.33	-154.87	105.88	0.00	1.75	N/A
TCL	Transurban Group	38339.02	14.03	0.14	14.11	HOLD	397.11	-3285.71	-75.50	-112.09	3.33	2.81	N/A

➤ Consumer stocks:

Code	Company Name	Market Cap (\$m)	Price (\$)	Daily Price Change (%)	Consensus Target Price (\$)	Consensus Rating	2020 PE	2021 PE	2020 EPS GROWTH	2021 EPS GROWTH	2020 Div Yield	2021 Div Yield	Newsflash
ALG	Ardentleisuregrpltd	407.75	0.82	-3.53	0.87	BUY	-7.79	-6.05	-406.01	-28.74	0.00	0.00	N/A
ALL	Aristocrat Leisure	20765.46	32.20	-0.98	37.46	BUY	43.48	28.13	-44.15	54.53	0.23	1.42	N/A
APE	Eagers Automotive	3386.38	13.14	-0.30	13.25	BUY	33.23	23.69	-0.64	40.29	0.81	2.71	N/A
ARB	ARB Corporation.	2275.23	28.76	2.20	30.25	HOLD	47.57	29.92	-16.12	58.98	1.09	1.76	N/A
AX1	Accent Group Ltd	1192.11	2.17	-1.36	2.05	BUY	20.38	18.31	8.31	11.27	2.78	4.46	N/A
BAP	Bapcor Limited	2430.19	7.18	0.28	8.65	BUY	25.33	21.61	-15.93	17.20	1.60	2.52	N/A
BBN	Baby Bunting Grp Ltd	559.67	4.32	-0.23	5.39	BUY	29.19	22.44	30.40	30.07	2.24	3.07	N/A
BRG	Breville Group Ltd	3466.57	25.00	0.20	27.72	HOLD	42.11	38.26	13.97	10.06	1.44	1.79	N/A
CCX	City Chic Collective	640.26	2.80	0.00	3.63	BUY	35.11	31.41	-2.15	11.76	0.00	0.70	N/A
CKF	Collins Foods Ltd	1208.95	10.36	-0.10	11.63	BUY	30.74	21.49	-14.03	43.08	1.25	2.30	N/A
CTD	Corp Travel Limited	2678.03	19.54	-0.46	18.70	BUY	69.16	535.78	-69.19	-87.09	0.92	0.08	N/A
CWN	Crown Resorts Ltd	6602.29	9.81	0.62	10.00	BUY	42.89	#####	-57.89	-99.76	3.61	3.86	Appointment of Chief Compliance & Financial Crimes Officer
DMP	Domino Pizza Enterpr	7196.15	81.95	-1.47	77.53	HOLD	47.71	40.13	3.16	18.88	1.39	1.76	N/A
FLT	Flight Centre Travel	3407.12	17.26	0.88	15.15	HOLD	-11.88	-15.21	-165.47	21.87	0.00	0.00	N/A
GEM	G8 Education Limited	1038.05	1.24	0.82	1.38	BUY	14.66	22.64	-41.52	-35.22	0.00	2.91	N/A
GUID	G.U.D. Holdings	1049.44	11.35	-0.70	12.75	BUY	19.41	16.94	-16.56	14.58	4.11	4.05	N/A
HVN	Harvey Norman	5831.31	4.69	0.21	5.13	BUY	13.80	10.20	9.97	35.30	4.44	7.21	N/A
IEL	Idp Education Ltd	6671.72	23.50	-1.96	21.14	BUY	133.61	130.88	-34.68	2.09	0.84	0.45	N/A
IVC	InvoCare Limited	1622.12	11.18	-0.71	11.00	HOLD	41.94	28.82	-45.34	45.52	2.40	2.87	N/A
JBH	JB Hi-Fi Limited	5324.84	45.30	-2.27	48.90	HOLD	16.01	14.51	34.77	10.37	3.86	4.53	N/A
JIN	Jumbo Interactive	877.41	13.96	-0.64	14.10	BUY	35.31	29.70	-5.72	18.89	2.34	2.36	N/A
KGN	Kogan.Com Ltd	1733.62	16.11	-1.77	20.25	BUY	54.65	32.92	59.93	66.01	1.38	2.20	N/A
KMD	Kathmandu Hold Ltd	840.17	1.19	0.00	1.25	HOLD	18.93	15.91	-49.59	18.96	1.05	3.54	N/A
LOV	Lovisa Holdings Ltd	1128.33	11.23	6.95	11.69	HOLD	27.47	53.11	18.57	-48.29	0.38	0.94	N/A
NCK	Nick Scall Limited	715.23	9.29	5.21	9.85	BUY	19.14	11.09	-5.88	72.67	4.83	6.79	N/A
PBH	Pointsbet Holdings	2137.34	12.16	4.29	12.80	BUY	-45.24	-38.45	N/A	-17.67	0.00	0.00	N/A
PMV	Premier Investments	3653.87	22.91	-0.39	20.50	HOLD	26.95	23.85	5.48	13.00	2.28	3.19	N/A
RDC	Redcape Hotel Group	521.82	0.94	-1.06	1.09	STRONG BUY	22.26	12.30	-46.15	80.95	5.03	7.43	N/A
SGR	The Star Ent Grp	3589.09	3.81	1.06	4.00	BUY	36.43	34.64	-56.87	5.18	2.80	0.00	N/A
SKC	Skycity Ent Grp Ltd	2242.61	2.98	1.02	3.56	STRONG BUY	41.12	30.65	-68.66	34.15	3.11	2.03	N/A
SLK	Sealink Travel Grp	1572.47	6.95	-3.47	6.28	BUY	40.31	26.03	-27.44	54.85	1.54	2.01	N/A
SUL	Super Ret Rep Ltd	2298.72	10.37	1.87	12.26	BUY	14.15	11.83	-3.11	19.63	1.69	5.23	N/A
TAH	TABCORP Holdings Ltd	8646.84	3.87	-0.77	3.66	HOLD	28.75	26.43	-31.81	8.75	3.07	2.02	N/A
TPW	Temple & Webster Ltd	1209.35	9.81	-2.29	12.60	BUY	140.14	49.95	577.64	180.57	0.00	0.00	N/A
WEB	Webjet Limited	1962.82	5.73	-1.04	3.70	HOLD	122.23	-30.91	-89.74	-495.44	0.77	0.00	N/A
WES	Wesfarmers Limited	56839.41	50.27	0.28	49.10	HOLD	28.49	27.68	1.42	2.91	2.96	3.20	N/A

➤ Staple stocks:

Code	Company Name	Market Cap (\$m)	Price (\$)	Daily Price Change (%)	Consensus Target Price (\$)	Consensus Rating	2020 PE	2021 PE	2020 EPS GROWTH	2021 EPS GROWTH	2020 Div Yield	2021 Div Yield	Newsflash
AZM	The A2 Milk Company	10106.88	13.40	-1.54	15.50	HOLD	27.29	26.51	27.90	2.94	0.00	0.00	N/A
AAC	Australian Agricult.	657.02	1.09	-0.46	1.45	STRONG BUY	-35.00	-67.81	13.89	48.39	0.00	0.00	N/A
AHY	Asaleo Care Limited	543.12	1.00	0.00	1.24	BUY	14.25	13.59	27.17	4.84	2.30	4.88	N/A
BGA	Bega Cheese Ltd	1187.67	5.48	-0.72	5.61	BUY	43.83	28.17	-31.16	55.59	1.57	2.07	Retail Entitlement Offer Opens
BKL	Blackmores Limited	1532.15	79.55	0.45	67.00	HOLD	71.18	44.82	-67.91	58.81	0.00	1.44	N/A
BUB	Bubs Aust Ltd	419.75	0.67	-2.92	0.65	SELL	-55.42	-83.13	N/A	33.33	0.00	0.00	N/A
BWX	BWX Limited	547.01	3.98	1.53	4.93	BUY	33.24	30.06	30.87	10.55	1.02	1.24	N/A
CCL	Coca-Cola Amatil	9173.08	12.73	0.47	12.75	HOLD	29.51	24.53	-17.16	20.29	2.17	3.32	N/A
CGC	Costa Group Holdings	1635.39	4.10	0.49	3.60	BUY	33.14	23.69	53.94	39.91	1.84	2.46	N/A
COL	Coles Group	24184.15	18.11	-0.11	20.05	BUY	25.77	23.85	4.92	8.04	3.24	3.51	N/A
ELD	Elders Limited	1715.56	10.71	-2.46	13.50	BUY	15.88	13.71	33.54	15.83	1.90	2.42	N/A
FNP	Freedom Food Ltd	834.10	3.01	0.00	3.27	HOLD	72.83	27.61	-46.74	163.73	0.00	0.85	N/A
GNC	GrainCorp Limited	1018.41	4.53	1.80	5.09	BUY	-326.13	18.11	95.91	1900.65	0.09	3.16	N/A
ING	Inghams Group	1148.49	3.07	-0.65	3.73	BUY	14.50	14.07	-24.90	3.08	4.54	4.84	Ceasing to be a substantial holder
MTS	Metcash Limited	3046.64	3.02	1.34	3.47	BUY	13.48	14.61	-2.29	-7.74	4.03	4.15	N/A
SHV	Select Harvests	700.36	5.56	-4.96	7.23	BUY	22.80	22.22	-50.89	2.61	2.55	2.77	N/A
SM1	Synlait Milk Ltd	1106.02	4.90	-3.16	6.56	BUY	11.81	14.81	-13.30	-20.25	0.00	0.00	Synlait releases 2020 Sustainability Report
TGR	Tassal Group Limited	769.26	3.56	-2.20	4.30	BUY	11.16	11.15	-0.78	0.08	5.15	5.06	N/A
TWE	Treasury Wine Estate	6060.10	8.65	2.98	10.40	BUY	19.69	22.38	-28.27	-12.00	3.13	2.91	N/A
UMG	United Malt Group	1322.37	4.40	-0.45	5.10	HOLD	22.45	22.04	N/A	1.87	0.59	2.54	N/A
WOW	Woolworths Group Ltd	47640.85	37.84	0.50	43.25	BUY	29.00	25.78	-1.31	12.51	2.52	2.83	N/A

➤ Healthcare stocks:

Code	Company Name	Market Cap (\$m)	Price (\$)	Daily Price Change (%)	Consensus Target Price (\$)	Consensus Rating	2020 PE	2021 PE	2020 EPS GROWTH	2021 EPS GROWTH	2020 Div Yield	2021 Div Yield	Newsflash
ANN	Ansell Limited	4889.18	37.23	-2.13	41.74	HOLD	22.72	19.36	3.27	17.32	1.91	2.20	N/A
API	Australian Pharm.	593.65	1.20	-0.41	1.08	HOLD	19.42	14.63	-42.65	32.69	0.83	4.63	N/A
AVH	Avita Therapeutics	393.10	5.83	-1.19	12.00	BUY	-13.15	-6.98	-23.15	-88.51	0.00	0.00	Cleansing Notice
COH	Cochlear Limited	14769.55	221.22	-1.53	204.00	HOLD	84.12	64.88	-43.41	29.65	0.73	0.55	N/A
CSL	CSL Limited	136378.57	296.26	-1.16	322.50	BUY	45.83	43.91	3.38	4.37	0.98	1.03	N/A
CUV	Clinuvel Pharmaceut.	995.62	20.47	1.59	28.89	STRONG BUY	N/A	78.28	N/A	N/A	N/A	0.09	N/A
EHE	Estia Health Ltd	440.28	1.69	0.00	1.57	BUY	16.39	25.66	-36.70	-36.12	4.83	3.32	N/A
FPH	Fisher & Paykel H.	19472.23	32.96	-2.46	36.39	BUY	73.19	46.50	30.39	57.39	0.83	1.10	Disclosure Document
HLS	Healius	2292.67	3.70	0.54	3.78	HOLD	35.21	19.29	-33.18	82.55	1.22	2.03	N/A
IDX	Integral Diagnostics	853.74	4.21	-2.09	4.60	BUY	27.74	22.94	-8.82	20.94	2.33	2.68	N/A
MSB	Mesoblast Limited	2422.60	4.43	7.26	3.80	HOLD	-24.65	-39.81	50.74	38.07	0.00	0.00	Remestemcel-L FDA Fast Track Designation for COVID-19 ARDS
MVF	Monash IVF Group Ltd	288.33	0.73	-1.35	0.84	BUY	15.63	14.60	-44.41	7.02	1.77	5.02	N/A
MVP	Medical Developments	462.65	6.99	-0.85	7.50	BUY	911.34	287.30	-43.89	217.21	0.52	0.19	N/A
MYX	Mayne Pharma Ltd	596.07	0.36	0.00	0.37	HOLD	-236.67	622.81	-108.51	138.00	0.00	0.00	N/A
NAN	Nanosonics Limited	2046.82	6.86	0.88	5.50	SELL	153.95	169.80	25.52	-9.34	0.00	0.00	N/A
OPT	Opthea Limited	776.63	2.30	0.00	4.80	BUY	-15.68	-250.00	-56.03	93.73	0.00	0.00	N/A
PAR	Paradigm Bio.	675.16	2.96	-1.00	2.54	HOLD	-39.21	-20.27	-98.68	-93.38	0.00	0.00	N/A
PME	Pro Medicus Limited	3121.14	29.85	-0.33	31.17	HOLD	129.22	105.54	34.41	22.44	0.40	0.48	N/A
PNV	Polynovo Limited	2234.48	3.44	1.78	2.45	BUY	-824.94	645.40	10.71	227.82	0.00	0.00	N/A
RHC	Ramsay Health Care	14751.43	64.78	0.51	70.10	HOLD	38.09	33.28	-40.63	14.48	1.00	1.33	N/A
RMD	ResMed Inc.	10236.73	28.27	-0.95	27.88	HOLD	44.71	39.82	25.10	12.30	0.81	0.83	N/A
SHL	Sonic Healthcare	15881.63	33.17	-0.21	38.35	BUY	30.54	16.16	-6.40	88.94	2.28	3.94	N/A
SIG	Sigma Health Ltd	603.83	0.57	0.00	0.69	BUY	44.99	16.15	-70.42	178.53	3.10	0.00	N/A
SPL	Starpharma Holdings	544.06	1.31	-2.24	2.03	STRONG BUY	-36.39	-53.47	-9.09	31.94	0.00	0.00	N/A
VRT	Virtus Health Ltd	431.69	5.27	-1.86	5.51	BUY	20.77	14.30	-27.98	45.22	2.47	3.73	N/A

➤ Bank stocks:

Code	Company Name	Market Cap (\$m)	Price (\$)	Daily Price Change (%)	Consensus Target Price (\$)	Consensus Rating	2020 PE	2021 PE	2020 EPS GROWTH	2021 EPS GROWTH	2020 Div Yield	2021 Div Yield	Newsflash
AFG	Aust Finance Grp	662.90	2.45	-0.81	2.19	BUY	16.00	15.84	11.33	0.99	3.48	3.85	N/A
ANZ	ANZ Banking Grp Ltd	64987.67	23.03	0.66	23.75	BUY	17.72	14.03	-41.87	26.29	2.49	4.17	N/A
BEN	Bendigo and Adelaide	4749.72	8.99	0.56	7.97	HOLD	15.57	15.86	-28.57	-1.82	4.07	3.57	N/A
BOQ	Bank of Queensland.	3498.09	7.73	0.65	7.20	HOLD	16.40	15.11	-40.13	8.49	1.19	3.49	N/A
CBA	Commonwealth Bank.	142371.24	80.10	-0.19	74.19	HOLD	19.15	19.77	-14.18	-3.15	3.39	3.37	Change of Directors Interest Notice
GMA	Genworth Mortgage	1068.41	2.64	1.93	2.39	HOLD	-21.38	17.12	-144.91	224.90	1.14	2.94	N/A
MYS	MyState Limited	460.32	4.98	-0.40	5.43	STRONG BUY	14.69	12.66	-0.59	16.03	5.01	5.25	N/A
NAB	National Aust. Bank	75808.00	23.00	-0.17	23.46	BUY	17.96	15.76	-30.48	13.95	2.49	3.91	NAB announces Les Matheson to join Executive Team
VUK	Virgin Money UK PLC	2263.80	2.47	3.35	2.68	BUY	21.17	11.42	-75.46	85.37	0.00	0.00	Director/PDMR Shareholding
WBC	Westpac Banking Corp	73244.97	20.30	0.10	20.60	BUY	25.00	13.40	-59.02	86.59	1.34	4.27	Westpac sells General Insurance Business to Allianz

➤ Diversified Financials / Insurance stocks:

Code	Company Name	Market Cap (\$m)	Price (\$)	Daily Price Change (%)	Consensus Target Price (\$)	Consensus Rating	2020 PE	2021 PE	2020 EPS GROWTH	2021 EPS GROWTH	2020 Div Yield	2021 Div Yield	Newsflash
AEF	Australian Ethical	581.04	5.13	-0.77	-	-	N/A	N/A	N/A	N/A	N/A	N/A	N/A
AMP	AMP Limited	5945.32	1.77	2.02	1.50	HOLD	18.68	16.23	-46.03	15.06	5.79	3.32	N/A
ASX	ASX Limited	14945.55	77.52	0.41	71.00	SELL	29.86	31.55	1.34	-5.37	3.01	2.85	N/A
AUB	AUB Group Ltd	1239.90	17.00	1.98	18.01	BUY	24.68	21.27	7.70	16.04	2.72	3.11	N/A
CCP	Credit Corp Group	1633.75	24.11	-0.66	22.00	BUY	18.01	23.76	-5.22	-24.20	2.21	2.12	N/A
CGF	Challenger Limited	3905.05	5.82	0.69	4.66	BUY	11.50	14.56	-11.37	-21.03	3.28	3.66	N/A
CNI	Centuria Capital	1469.57	2.51	0.80	2.52	BUY	21.00	20.75	-5.77	1.20	3.90	3.43	Change in substantial holding
ECX	Eclix Group Ltd	613.70	1.90	-1.04	2.01	BUY	15.20	13.18	17.04	15.36	0.00	1.72	N/A
HUB	HUB24 Ltd	1373.29	21.10	0.86	23.20	BUY	98.19	73.93	38.51	32.82	0.37	0.52	N/A
HUM	Humm Group	633.94	1.25	-2.34	1.40	BUY	12.04	9.66	-47.24	24.69	3.90	2.63	N/A
IAG	Insurance Australia	12808.74	5.27	0.38	5.64	BUY	37.07	1013.46	-64.46	-96.34	1.98	3.32	N/A
IFL	IOOF Holdings Ltd	2519.38	3.82	-1.55	4.80	BUY	11.50	14.89	-35.24	-22.81	6.84	4.34	N/A
JHG	Janus Henderson	1227.58	39.29	0.23	40.00	BUY	11.16	10.82	-4.23	3.15	5.40	5.49	Daily share buy-back notice - Appendix 3E
MFG	Magellan Fin Grp Ltd	10915.47	58.50	-1.58	60.53	HOLD	24.48	23.83	18.82	2.75	3.70	3.84	N/A
MNY	Money3 Corporation	552.40	2.96	-0.67	3.40	BUY	20.92	15.66	-29.34	33.57	3.38	3.77	N/A
MPL	Medibank Private Ltd	7876.45	2.89	1.05	2.90	BUY	22.50	21.23	-22.11	5.97	3.96	4.02	N/A
MQG	Macquarie Group Ltd	50679.44	138.34	-1.32	145.71	BUY	16.89	23.12	-5.84	-26.92	3.87	2.53	N/A
NGI	Navigator Global Ltd	282.14	1.78	2.30	2.24	STRONG BUY	7.40	12.08	-14.29	-38.73	12.11	7.70	N/A
NHF	NIB Holdings Limited	2381.84	5.20	-0.19	4.80	BUY	21.53	19.79	-31.17	8.80	3.27	3.07	Change of Directors Interest Notice - Mark Fitzgibbon
NWL	Netwealth Group	3929.10	16.13	-2.42	14.50	HOLD	90.39	75.02	21.64	20.49	0.87	1.04	N/A
OBL	Omni Bridgeway Ltd	1084.84	4.25	-0.47	5.45	BUY	-188.89	8.27	40.94	2382.98	1.41	1.65	N/A
OFX	OFX Group Ltd	293.87	1.20	-0.41	-	-	20.00	N/A	-23.57	N/A	4.17	N/A	N/A
PDL	Pendal Group Ltd	2320.95	7.21	0.28	7.02	BUY	14.98	16.28	-6.40	-7.93	5.36	5.32	N/A
PNI	Pinnacle Investment	1142.23	6.03	-1.15	6.11	BUY	34.96	32.16	6.81	8.70	2.40	2.65	Variation to director employment terms
PPT	Perpetual Limited	1921.87	33.98	-0.09	36.12	BUY	17.67	17.05	-25.03	3.64	5.06	4.41	Substantial Product Holder Notice for FBU
PTM	Platinum Asset	2446.45	4.14	-0.72	3.30	SELL	16.45	18.90	-7.42	-12.97	5.96	5.15	N/A
QBE	QBE Insurance Group	14929.27	10.08	-0.69	12.06	BUY	-24.40	14.55	-148.29	267.67	1.64	4.17	N/A
SDF	Steadfast Group Ltd	3404.43	3.91	-0.26	4.10	BUY	25.33	22.47	12.01	12.71	2.25	2.75	N/A
SUN	Suncorp Group Ltd	12972.49	10.15	0.20	10.20	BUY	19.33	15.77	-37.70	22.52	3.62	4.32	N/A
ZIP	Zip Co Ltd.	3128.82	5.95	-1.33	8.25	BUY	-59.13	-58.27	-262.63	-1.47	0.00	0.00	November YTD trading update

➤ Property stocks:

Code	Company Name	Market Cap (\$m)	Price (\$)	Daily Price Change (%)	Consensus Target Price (\$)	Consensus Rating	2020 PE	2021 PE	2020 EPS GROWTH	2021 EPS GROWTH	2020 Div Yield	2021 Div Yield	Newsflash
ABP	Abacus Property Grp.	2090.32	3.15	0.32	3.11	BUY	16.88	17.29	-33.95	-2.36	5.80	5.61	N/A
ADI	Apn Industria REIT	594.55	3.02	0.33	2.91	BUY	15.33	15.98	7.65	-4.06	5.72	5.68	Settlement of 78 Henderson Road, Rowville
ARF	Arena REIT.	967.49	2.81	-0.71	2.84	BUY	17.75	18.86	14.08	-5.87	4.99	5.10	N/A
AVN	Aventus Group	1554.94	2.65	-3.28	2.75	HOLD	15.11	14.39	-2.56	5.00	4.50	6.12	N/A
BWP	BWP Trust	2775.10	4.31	-0.23	3.23	SELL	24.04	23.91	-2.69	0.56	4.21	4.19	N/A
CHC	Charter Hall Group	6609.38	14.05	-0.99	13.96	BUY	20.88	26.02	45.13	-19.78	2.55	2.70	N/A
CIP	Centuria I REIT	1718.12	3.13	0.32	3.29	BUY	16.67	17.95	-43.38	-7.13	5.85	5.42	N/A
CLW	Chtr H Lwr	2531.26	4.86	-0.61	5.47	BUY	16.77	16.47	6.94	1.79	5.76	6.00	N/A
CMW	Cromwell Prop	2329.55	0.90	0.56	1.01	HOLD	11.53	12.83	0.96	-10.13	8.80	8.80	N/A
COF	Centuria Office REIT	1147.39	2.20	-1.35	2.27	BUY	12.24	12.14	-14.55	0.83	8.07	7.55	N/A
CQE	Charter Hall Soc In	1105.44	3.08	0.65	3.27	BUY	17.96	19.87	-11.06	-9.62	5.19	4.84	N/A
CQR	Charter Hall Retail	2175.30	3.83	0.52	3.72	HOLD	13.02	14.95	-5.13	-12.92	6.50	5.88	N/A
CWP	Cedar Woods Prop.	545.02	6.70	-0.74	5.80	HOLD	24.28	17.54	-57.11	38.41	2.69	3.06	N/A
DXS	Dexus	10574.73	9.71	0.00	9.74	HOLD	15.69	15.58	1.18	0.73	5.09	5.16	N/A
GDI	GDI Property Grp	631.46	1.15	-1.29	1.48	STRONG BUY	N/A	21.30	N/A	N/A	N/A	6.78	N/A
GMG	Goodman Group	35156.58	18.53	-2.63	19.85	HOLD	32.23	29.14	12.11	10.57	1.62	1.62	N/A
GOZ	Growthpoint Property	2833.77	3.66	-0.27	3.56	BUY	15.67	15.17	1.19	3.30	5.98	5.52	N/A
GPT	GPT Group	9096.83	4.68	0.21	4.46	HOLD	18.11	15.45	-19.83	17.22	4.13	4.99	N/A
HPI	Hotel Property	534.96	3.17	1.28	3.31	BUY	15.85	16.17	2.56	-2.00	6.31	6.12	Ceasing to be a substantial holder for HPI
IAP	Investec Aust Prop	803.86	1.29	-1.90	1.70	HOLD	14.83	14.18	N/A	4.60	6.94	6.82	N/A
INA	Ingenia Group	1541.80	4.75	0.64	5.33	STRONG BUY	22.51	20.65	10.24	9.00	2.31	2.15	N/A
LIC	Lifestyle Communit.	1207.50	11.56	0.09	11.49	BUY	43.54	30.95	-30.86	40.68	0.52	0.50	N/A
LLC	Lendlease Group	9849.11	14.47	1.12	14.32	BUY	101.82	22.35	-82.17	355.60	2.26	2.11	N/A
MGR	Mirvac Group	10277.02	2.59	-0.77	2.58	BUY	16.46	18.74	-5.39	-12.18	3.76	3.80	N/A
NSR	National Storage	1984.50	1.92	-1.79	1.83	HOLD	23.18	23.99	-16.06	-3.35	4.19	4.15	N/A
RFF	Rural Funds Group	884.54	2.56	-1.92	2.43	BUY	16.70	17.33	10.98	-3.59	4.20	4.40	N/A
SCG	Scentre Grp	14740.67	2.85	0.35	2.40	HOLD	19.16	15.01	-40.54	27.63	3.18	5.44	N/A
SCP	SCA Property Group	2799.09	2.60	0.00	2.48	HOLD	17.23	18.10	-6.21	-4.81	5.09	4.73	N/A
SGP	Stockland	10885.09	4.49	-1.54	4.11	HOLD	13.94	14.40	-9.98	-3.25	5.42	5.41	N/A
URW	UnibailRodawestfield	1113.92	5.05	2.23	3.62	HOLD	7.85	7.12	-36.83	10.16	5.25	7.47	N/A
VCK	Vicinity Centres	7670.58	1.70	0.59	1.39	HOLD	11.62	16.56	-18.15	-29.83	4.76	4.63	N/A
WPR	Waypoint REIT	2111.71	2.69	0.00	2.92	BUY	17.89	16.85	0.94	6.12	5.58	5.94	N/A

➤ IT stocks:

Code	Company Name	Market Cap (\$m)	Price (\$)	Daily Price Change (%)	Consensus Target Price (\$)	Consensus Rating	2020 PE	2021 PE	2020 EPS GROWTH	2021 EPS GROWTH	2020 Div Yield	2021 Div Yield	Newsflash
AD8	Audinate Group Ltd	564.20	7.20	-2.70	7.50	BUY	-741.50	-177.34	-331.19	-318.13	0.00	0.00	N/A
ALU	Altium Limited	4709.53	35.72	-0.67	36.50	HOLD	77.36	64.09	-23.62	20.70	1.22	1.41	N/A
APT	Afterpay Limited	27996.12	98.56	0.26	105.65	BUY	-1136.92	855.93	-120.64	232.83	0.00	0.00	N/A
APX	Appen Limited	3934.36	31.02	-4.08	40.00	BUY	51.79	37.08	14.78	39.65	0.36	0.51	N/A
BVS	Bravura Solution Ltd	855.19	3.33	-3.76	3.80	HOLD	20.51	21.62	9.68	-5.13	3.31	3.18	N/A
CDA	Codan Limited	1909.75	10.64	0.57	10.50	BUY	30.42	24.70	41.79	23.17	1.69	2.15	N/A
CPU	Computershare Ltd	7712.94	14.28	0.14	14.62	HOLD	18.63	20.40	-24.88	-8.70	2.80	2.83	N/A
DDR	Dicker Data Limited	1833.23	10.59	-0.56	-	-	N/A	N/A	N/A	N/A	N/A	N/A	Change of Directors Interest Notice - MS
DTL	Data#3 Limited	891.51	5.73	-1.04	6.05	BUY	37.57	32.93	27.08	14.10	2.43	2.71	N/A
ELO	Elmo Software	557.38	6.32	-2.02	7.60	BUY	-29.07	-23.56	-93.67	-23.39	0.00	0.00	N/A
EML	EML Payments Ltd	1425.51	3.86	-2.03	4.28	BUY	44.50	38.90	86.84	14.37	0.00	0.00	N/A
HSN	Hansen Technologies	777.32	3.89	-0.51	4.43	BUY	19.55	14.93	17.06	30.90	1.59	2.53	N/A
IFM	Infomedia Ltd	739.18	1.92	-2.54	2.00	BUY	35.44	34.80	6.74	1.85	2.15	2.11	N/A
IRE	IRESS Limited	2024.13	10.30	-1.62	11.20	HOLD	26.55	24.97	-8.74	6.30	4.16	4.36	N/A
IRI	Integrated Research	581.95	3.39	0.30	3.75	HOLD	24.21	24.39	11.11	-0.71	2.36	2.15	N/A
LNK	Link Admin Hldg	2663.08	5.00	-0.20	5.10	HOLD	19.58	23.56	-31.34	-16.88	2.36	2.14	N/A
MP1	Megaport Limited	2074.87	13.53	0.74	16.55	BUY	-56.38	-64.36	2.17	12.41	0.00	0.00	N/A
NEA	Nearmap Ltd	1151.17	2.20	-5.98	3.10	BUY	-27.16	-35.55	-636.36	23.60	0.00	0.00	N/A
NXT	Nextdc Limited	5218.95	11.34	-0.96	13.89	BUY	-303.29	-1568.46	-169.38	80.66	0.00	0.00	N/A
TNE	Technology One	2979.81	9.11	-1.83	9.37	HOLD	45.80	43.23	13.98	5.96	1.41	1.65	N/A
TYR	Tyro Payments	1930.31	3.63	-4.72	3.97	HOLD	-76.15	-103.71	N/A	26.58	0.00	0.00	N/A
WTC	WiseTech Global Ltd	10347.25	30.84	-3.50	27.00	HOLD	141.31	113.89	21.32	24.07	0.11	0.14	N/A
XRO	Xero Ltd	19381.68	130.66	-1.16	114.90	HOLD	1156.08	314.64	423.74	267.43	0.00	0.00	N/A

➤ **Communication stocks:**

Code	Company Name	Market Cap (\$m)	Price (\$)	Daily Price Change (%)	Consensus Target Price (\$)	Consensus Rating	2020 PE	2021 PE	2020 EPS GROWTH	2021 EPS GROWTH	2020 Div Yield	2021 Div Yield	Newsflash
CAR	Carsales.Com Ltd.	5026.26	20.14	-1.27	19.50	HOLD	41.11	35.44	-9.23	16.00	2.06	2.37	N/A
CNU	Chorus Limited	3442.09	7.66	-0.52	-	-	68.31	71.65	-6.84	-4.67	2.94	3.07	Ongoing Disclosure Notice - Kate Jorgensen
DHG	Domain Holdings Aus	2599.97	4.52	1.57	4.25	HOLD	147.52	81.91	-57.11	80.09	0.67	0.71	N/A
EVT	Event Hospitality	1737.69	10.94	1.48	9.20	BUY	64.93	-374.02	-75.79	-117.36	1.92	1.39	N/A
NEC	Nine Entertainment	4007.67	2.41	2.55	2.75	BUY	27.52	20.78	-36.02	32.48	2.90	3.28	N/A
NWS	News Corp.	1095.77	24.47	-0.53	26.33	BUY	98.71	57.40	-59.05	71.96	1.05	1.14	N/A
OML	Ooh!Media Limited	1011.96	1.71	0.00	1.25	BUY	-64.77	43.18	-116.49	250.00	0.00	0.35	N/A
REA	REA Group	19065.70	145.07	0.22	126.75	HOLD	72.25	61.20	-15.40	18.06	0.72	0.84	Initial Directors Interest Notice
SEK	Seek Limited	9348.24	26.23	-0.94	23.67	HOLD	89.75	156.78	-47.41	-42.75	0.66	0.31	N/A
SLC	Superloop Limited	389.65	1.07	0.00	1.21	BUY	-11.38	-13.69	-30.69	16.88	0.11	0.09	N/A
SPK	Spark New Zealand	8111.20	4.42	0.91	-	HOLD	21.06	21.13	2.42	-0.35	5.31	5.07	N/A
SXL	Sthn Cross Media	626.19	2.39	0.84	1.80	HOLD	10.30	21.24	-67.42	-51.51	5.02	0.00	N/A
TLS	Telstra Corporation.	36631.36	3.05	-0.97	3.55	BUY	16.54	22.13	-9.31	-25.25	5.22	5.08	N/A
TPG	TPG Telecom Limited	14261.15	7.56	-1.43	8.71	BUY	51.40	37.97	N/A	35.35	0.81	1.62	N/A
UWL	Uniti Group Ltd	941.75	1.53	-1.92	1.85	STRONG BUY	31.07	22.84	354.73	36.07	0.00	0.00	N/A
VOC	Vocus Group Ltd	2546.98	4.11	0.24	4.32	HOLD	24.18	24.07	4.41	0.44	0.00	0.00	N/A
VRL	Village Roadshow Ltd	576.14	2.93	-0.68	2.32	HOLD	-16.28	-25.13	-254.28	35.22	0.34	0.00	VRL Receives Tax Assessments

➤ **Utility stocks:**

Code	Company Name	Market Cap (\$m)	Price (\$)	Daily Price Change (%)	Consensus Target Price (\$)	Consensus Rating	2020 PE	2021 PE	2020 EPS GROWTH	2021 EPS GROWTH	2020 Div Yield	2021 Div Yield	Newsflash
AGL	AGL Energy Limited.	8435.88	13.62	0.59	14.47	HOLD	10.87	13.71	-19.06	-20.69	7.01	7.20	N/A
APA	APA Group	12341.69	10.36	-0.96	11.23	HOLD	39.18	39.61	2.37	-1.07	4.83	4.85	N/A
AST	AusNet Services Ltd	6980.67	1.85	-0.54	1.98	HOLD	25.09	21.76	5.46	15.29	5.45	5.18	N/A
SKI	Spark Infrastructure	3649.89	2.09	-0.48	2.29	HOLD	45.43	56.82	-23.70	-20.04	6.60	5.84	N/A

Disclaimer

This document was prepared by Deep Data Analytics. Deep Data Analytics and its related bodies corporate ("DDA"), its directors and/or employees charge a subscription for this report. Deep Data Analytics as principal, its directors and/or employees and their associates may hold securities in the companies mentioned in this report. Deep Data Analytics may seek to do business with any of the companies outlined in this report and should not be considered independent. This document contains Deep Data Analytics proprietary processed data and publicly available information. The information has not been verified or audited, and you are strongly advised to make your own independent assessment and investigation in respect of any matters contained in the document, including to seek independent professional advice. The document has been provided to you for your general information purposes only. It does not consider your particular investment objectives, financial situation or other specific needs. This report has been provided to you on the condition that it is purely general advice and not to be considered as personal advice at any level.

Deep Data Analytics or their respective directors, officers, employees or shareholders makes any representation or warranty, expressed or implied, and takes no responsibility, in respect of the accuracy, reliability, completeness or thoroughness of any of the information contained in this document. Each of those parties, to the maximum extent permitted by law, expressly disclaims, and as a recipient, you expressly release each of those parties from, all liabilities, including (without limitation) liability for negligence in respect of, any part of the information contained in the document. No such parties are under any obligation to update any information in this document or correct any inaccuracies or omissions that may exist or become apparent. Neither this document nor any additional information which may subsequently be provided to a recipient shall constitute or form part of any offer, solicitation, invitation, advice or recommendation to sell or acquire any securities or assets.

Deep Data Analytics provides this financial advice as an honest and reasonable opinion held at a point in time about an investment's risk profile and merit and the information is provided by the Deep Data Analytics in good faith. The views of the adviser(s) do not necessarily reflect the views of the AFS Licensee. Deep Data Analytics has no obligation to update the opinion unless Deep Data Analytics is currently contracted to provide such an updated opinion. Deep Data Analytics does not warrant the accuracy of any information it sources from others. All statements as to future matters are not guaranteed to be accurate and any statements as to past performance do not represent future performance. Assessment of risk can be subjective. Portfolios of equity investments need to be well diversified and the risk appropriate for the investor. Equity investments in listed or unlisted companies yet to achieve a profit or with an equity value less than \$50 million should collectively be a small component of a balanced portfolio, with smaller individual investment sizes than otherwise. Investors are responsible for their own investment decisions, unless a contract stipulates otherwise. Deep Data Analytics does not stand behind the capital value or performance of any investment. Subject to any terms implied by law and which cannot be excluded, Deep Data Analytics shall not be liable for any errors, omissions, defects or misrepresentations in the information (including by reasons of negligence, negligent misstatement or otherwise) or for any loss or damage (whether direct or indirect) suffered by persons who use or rely on the information. If any law prohibits the exclusion of such liability, Deep Data Analytics limits its liability to the re-supply of the Information, provided that such limitation is permitted by law and is fair and reasonable.

Copyright © Deep Data Analytics. All rights reserved. This material is proprietary to Deep Data Analytics and may not be disclosed to third parties. Any unauthorized use, duplication or disclosure of this document is prohibited. The content has been approved for distribution by Deep Data Analytics (ABN 67 159 532 213 AFS Representative No. 1282992) which is a corporate approved representative of BR Securities (ABN 92 168 734 530 and holder of AFSL No. 456663). Deep Data Analytics is the business name of ABN 67 159 532 213.